

Product datasheet for **RC214101**

TSLP (NM_033035) Human Tagged ORF Clone

Product data:

Product Type: Expression Plasmids
Product Name: TSLP (NM_033035) Human Tagged ORF Clone
Tag: Myc-DDK
Symbol: TSLP
Mammalian Cell Selection: Neomycin
Vector: pCMV6-Entry (PS100001)
E. coli Selection: Kanamycin (25 ug/mL)
ORF Nucleotide Sequence: >RC214101 representing NM_033035
Red=Cloning site Blue=ORF Green=Tags(s)

TTTTGTAATACGACTCACTATAGGGCGGCCGGAATTCGTCGACTGGATCCGGTACCGAGGAGATCTGCC
GCC**CGATCGCC**

ATGTTCCCTTTGCCTTACTATATGTTCTGTCAGTTTCTTTCAGGAAAATCTTCATCTTACAACCTGTAG
GGCTGGTGTAACTTACGACTTCACTAACTGTGACTTTGAGAAGATTAAGCAGCCTATCTCAGTACTAT
TTCTAAAGACCTGATTACATATATGAGTGGGACCAAAAGTACCGAGTTCAACAACACCGTCTCTTGTAGC
AATCGGCCACATTGCCTTACTGAAATCCAGAGCCTAACCTTCAATCCCACCGCCGGCTGCGCGTGCCTCG
CCAAAGAAATGTTGCCATGAAAATAAGGTCGCTTAGCTATCTGGTGCCAGGCTATTCGGAACACTCA
GATAAATGCTACTCAGGCAATGAAGAAGAGGAGAAAAAGGAAAGTCAACAACCAATAAATGTCTGGAACAA
GTGTCACAATTACAAGGATTGTGGCGTCGCTTCAATCGACCTTTACTGAAACAACAG

ACGCGTACGCGGCCGCTCGAGCAGAAACTCATCTCAGAAGAGGATCTGGCAGCAATGATATCCTGGATT
ACAAGGATGACGACGATAAGGTTTAA

Protein Sequence: >RC214101 representing NM_033035
Red=Cloning site Green=Tags(s)

MFPFALLYVLSVSFRKIFILQLVGLVLTVDFTNCFEIKAAYLSTISKDLITYMSGTKSTEFNNTVSCS
NRPCHLTEIQSLTFNPTAGCASLAKEMFAMKTKAALAIWCPGYSETQINATQAMKKRRKRKVTNNKCLEQ
VSQQLQLWRRFNRPLLKQQ

TRTRPLEQKLISEEDLAANDILDYKDDDDKV

Chromatograms: https://cdn.origene.com/chromatograms/mk6506_g11.zip

Restriction Sites: SgfI-MluI



Cloning Scheme:


ACCN: NM_033035

ORF Size: 477 bp

OTI Disclaimer: The molecular sequence of this clone aligns with the gene accession number as a point of reference only. However, individual transcript sequences of the same gene can differ through naturally occurring variations (e.g. polymorphisms), each with its own valid existence. This clone is substantially in agreement with the reference, but a complete review of all prevailing variants is recommended prior to use. [More info](#)

OTI Annotation: This clone was engineered to express the complete ORF with an expression tag. Expression varies depending on the nature of the gene.

Components: The ORF clone is ion-exchange column purified and shipped in a 2D barcoded Matrix tube containing 10ug of transfection-ready, dried plasmid DNA (reconstitute with 100 ul of water).

- Reconstitution Method:**
1. Centrifuge at 5,000xg for 5min.
 2. Carefully open the tube and add 100ul of sterile water to dissolve the DNA.
 3. Close the tube and incubate for 10 minutes at room temperature.
 4. Briefly vortex the tube and then do a quick spin (less than 5000xg) to concentrate the liquid at the bottom.
 5. Store the suspended plasmid at -20°C. The DNA is stable for at least one year from date of shipping when stored at -20°C.

RefSeq: [NM_033035.5](#)

RefSeq Size: 2652 bp

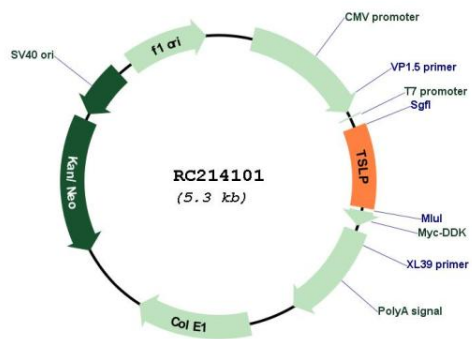
RefSeq ORF: 480 bp

Locus ID: 85480

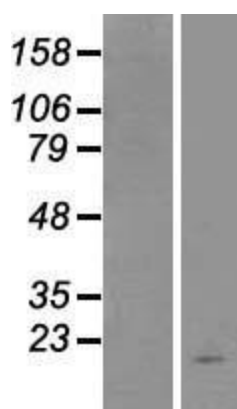
UniProt ID: [Q969D9](#)

Cytogenetics:	5q22.1
Protein Families:	Druggable Genome
Protein Pathways:	Cytokine-cytokine receptor interaction, Jak-STAT signaling pathway
MW:	18 kDa
Gene Summary:	This gene encodes a hemopoietic cytokine proposed to signal through a heterodimeric receptor complex composed of the thymic stromal lymphopoietin receptor and the IL-7R alpha chain. It mainly impacts myeloid cells and induces the release of T cell-attracting chemokines from monocytes and enhances the maturation of CD11c(+) dendritic cells. The protein promotes T helper type 2 (TH2) cell responses that are associated with immunity in various inflammatory diseases, including asthma, allergic inflammation and chronic obstructive pulmonary disease. The protein is therefore considered a potential therapeutic target for the treatment of such diseases. In addition, the shorter (predominant) isoform is an antimicrobial protein, displaying antibacterial and antifungal activity against <i>B. cereus</i> , <i>E. coli</i> , <i>E. faecalis</i> , <i>S. mitis</i> , <i>S. epidermidis</i> , and <i>C. albicans</i> . Alternative splicing of this gene results in multiple transcript variants. [provided by RefSeq, Jul 2020]

Product images:



Circular map for RC214101



Western blot validation of overexpression lysate (Cat# [LY409755]) using anti-DDK antibody (Cat# [TA50011-100]). Left: Cell lysates from untransfected HEK293T cells; Right: Cell lysates from HEK293T cells transfected with RC214101 using transfection reagent MegaTran 2.0 (Cat# [TT210002]).