

Product datasheet for **RC214045**

ZFX (NM_003410) Human Tagged ORF Clone

Product data:

Product Type:	Expression Plasmids
Product Name:	ZFX (NM_003410) Human Tagged ORF Clone
Tag:	Myc-DDK
Symbol:	ZFX
Synonyms:	ZNF926
Mammalian Cell Selection:	Neomycin
Vector:	pCMV6-Entry (PS100001)
E. coli Selection:	Kanamycin (25 ug/mL)



[View online »](#)

ORF Nucleotide Sequence:

>RC214045 representing NM_003410
 Red=Cloning site Blue=ORF Green=Tags(s)

TTTTGTAATACGACTCACTATAGGGCGGCCGGGAATTCGTCGACTGGATCCGGTACCGAGGAGATCTGCC
 GCC**CGGATCGCC**

ATGGATGAAGATGGGCTTGAATTACAACAAGAGCCAAACTCATTTTTTGTGCAACAGGAGCTGATGGTA
 CACACATGGATGGTGATCAAATTGTTGTGGAAGTACAAGAACTGTTTTGTTTCAGATGTTGTGGATTC
 AGACATAACTGTGCATAACTTTGTTCTGATGACCCAGATTCAGTTGTAATCCAAGATGTTATTGAGGAC
 GTTGTTATAGAAGATGTTCAAGTCCAGATATCATGGAAGAAGCAGATGTGTCTGAAACGGTCATCATT
 CTGAGCAAGTGGTGGACTCAGATGTAAGTGAAGAAGTTTCTTTAGCACATTGCACAGTCCCAGATGATGT
 TTTAGCTTCTGACATTACTTCAGCCTCAATGTCTATGCCAGAACACGCTTTGACGGGTGATTCTATACAT
 GTGTCTGACGTTGGACATGTTGGACATGTTGGACATGTTGAACATGTGGTTCATGATAGTGTAGTGAAG
 CAGAAATTGTCACTGATCCTCTGACTACCGACGTAGTTTCAGAAGAAGTATTGGTAGCAGACTGTGCCTC
 TGAAGCAGTCATAGATGCCAATGGGATCCCTGTGGACCAGCAGGATGATGACAAAGGCAACTGTGAGGAC
 TACCTTATGATTTCTTGGATGATGCTGGCAAAATAGAACACGATGGTTCCTTCTGGAATGACCATGGACA
 CAGAGTCGGAAATTGATCCTTGTAAAGTGGATGGCACTTGCCCTGAGGTCATCAAGGTGTACATTTTTAA
 AGCTGACCCTGGAGAAGATGACTTAGGTGGAAGTGTAGACATTGTGGAGAGTGAGCCTGAGAATGATCAT
 GGAGTTGAACTGCTTGATCAGAACAGCAGTATTCGTGTTCCAGGGAAAAGATGGTTTATGACTGTCA
 ATGACTCTCAGCCAGAAGATGAAGATTTAAATGTTGCTGAAATCGCTGACGAAGTTTATATGGAAGTGT
 CGTAGGAGAGGAGGATGCTGCAGCAGCAGCGCCAGCCGCCCGTGCACGAGCAGCAAATGGATGACAAT
 GAAATCAAAAACCTTCATGCCGATTGCATGGCAGCAGCTTATGGTAATAATTCTGATGGAATGAAAAAC
 GGAATGGCACTGCAAGTGCCTCTTGCACATAGATGAGTCTGCTGCCTCGCAGACTGGCTAAACAAAA
 ACCAAAGAAAAGGAGAAGACCTGATCCAGGCAGTACCAAACAGCAATAATTATTGGCCCTGATGGACAT
 CCTTTGACTGTCTATCCTTGATGATTTGTGGGAAGAAGTTTAAAGTCGAGAGTTTTTTGAAAAGGCACA
 TAAAAAACCATCCGAACACCTTGCCAAGAAGAAATACCGCTGTACTGACTGTGATTACACTACCAACAA
 GAAGATAAGTTTACACAACCACCTGGAGAGCCACAAGCTGACCAGCAAGGCAGAGAAGGCCATTGAATGC
 GATGAGTGTGGGAAGCATTTCTCTCATGCAGGGGCTTTGTTTACTCACAAAATGGTGCATAAAGAAAAAG
 GAGCCAACAAAATGCACAAGTGTAAATTCTGTGAATACGAGACAGCTGAACAAGGTTATTGAATCGCCA
 CCTTTGGCAGTCCACAGCAAGAACTTTCTCATATTTGTGTGGAGTGTGGTAAGGGTTTTCTGCACCCG
 TCAGAGCTCAAAAAGCACATGAGAAATCCATACTGGGGAGAAGCCGTACCAATGCCAGTACTGCGAATATA
 GGTCTGCAGACTTTCTAACTTGAACCGCATGTCAAAACTAAGCATAGTAAAGAGATGCCATTCGAAGT
 TGACATTTGTCTTCTGACTTTCTCGGATACCAAAGAGGTGCAGCAACATGCTCTTATCCACCAAGAAAGC
 AAAACACACCAGTGTTCATTGCGACCACAAGAGTTCGAACTCAAGTATTTGAAACGACACATAATTT
 CAGTTCACACGAAAGACTACCCCATAAAGTGTGACATGTGTGATAAAGGCTTTCACAGGCCCTTCAGAACT
 CAAGAAACACGTGGCTGCCACAAAGGGCAAAAAATGCACCAGTGTAGACATTGTGACTTTAAGATTGCA
 GATCCATTTGTTCTAAGTCGCCATTTCTCTCAGTTCACACAAAGGATCTTCCATTTAGGTGCAAGAGAT
 GTAGAAAGGGATTTAGGCAACAGAGTGAAGTAAAAAGCATATGAAGACACACAGTGGCAGGAAAGTGT
 TCAGTGTGAGTACTGTGAGTATAGCACTACAGATGCCTCAGGCTTTAAACGGCACGTTATTTCCATTAC
 ACGAAAGACTATCCTCACCGGTGTGAGTACTGCAAGAAAGGCTTCCGAAGACCTTCAGAAAAGAACCAGC
 ACATAATGCGACATCATAAAGAAGTTGGCTGCC

ACGCGTACGCGGCCGCTCGAGCAGAACTCATCTCAGAAGAGGATCTGGCAGCAAATGATATCCTGGATT
 ACAAGGATGACGACGATAAGGTTTAA

Protein Sequence: >RC214045 representing NM_003410
Red=Cloning site Green=Tags(s)

MDEGLLELQQEPNSFFDATGADGTHMDGDQIVVEVQETVVFSDVVSDITVHNFVDDPDSVVIQDVIED
VVIDVQCPDIMEEADVSETVIIPEQVLDSVTEEVSLAHCTVPDDVLASDITSASMSMPEHVL TGDSIH
VSDVGHVGHVGHVEHVHDSVVEAEIVTDPLTDDVVSEEVLVADCASEAVIDANGIPVDQDDDKGNCE
YLMISLDDAGKIEHDGSSGMTDTESEIDPCKVDGTCPEVIKVIYIFKADPGEDDLGGTVDIVSEPENDH
GVELLDQNSSIRVPREKMYMTVNSQPEDEDLNVAEIADEVYMEVIVGEEDAAAAAAAAAVHEQQMDDN
EIKTFMPIAWAAAAYGNNSDGIENRNGTASALLHIDESAGLGRLAKQKPKKRRRPDSRQYQTAIIGPDGH
PLTVYPCMICGKKFKSRGFLKRHMKNHPEHLAKKKYRCTDCDYTTNKKISLHNHLESHKLT SKAEKAI
DECCKHFSHAGALFTHKMVHKEKGANKMHKCKFCYETAEQGLLRHLLAVHKNFPHICVECGKGRHP
SELKKHMRHTGEKPYQCQYCEYRSADSSNLKTHVKT KHSKEMPFKCDICLLTFSDTKEVQHALIHQES
KTHQCLHCDHKSNSDLKRHIISVHTKDYPHKCDMCDKGFHRPSELKKHVAHKGKKMHQCRHCDFKIA
DPFVLSRHILSVHTKDL PFRCKRCRKGFRQQSELKKHMKTHSGRKVYQCEYCEYSTTDASGFKRHVISIH
TKDYPHRCEYCKGFRPSEKNQHIMRHHKEVGLP

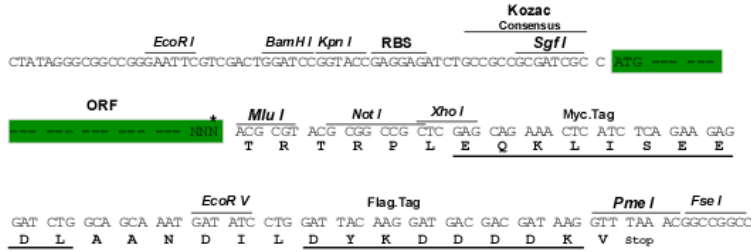
TRTRPLEQKLISEEDLAANDILDYKDDDDKV

Chromatograms: https://cdn.origene.com/chromatograms/mg4094_e02.zip

Restriction Sites: Sgfl-Mlul

Cloning Scheme:

Cloning sites used for ORF Shuttling:



* The last codon before the Stop codon of the ORF

ACCN: NM_003410

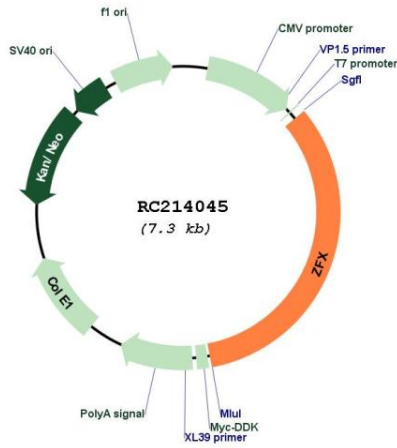
ORF Size: 2415 bp

OTI Disclaimer: Due to the inherent nature of this plasmid, standard methods to replicate additional amounts of DNA in E. coli are highly likely to result in mutations and/or rearrangements. Therefore, OriGene does not guarantee the capability to replicate this plasmid DNA. Additional amounts of DNA can be purchased from OriGene with batch-specific, full-sequence verification at a reduced cost. Please contact our customer care team at custsupport@origene.com or by calling 301.340.3188 option 3 for pricing and delivery.

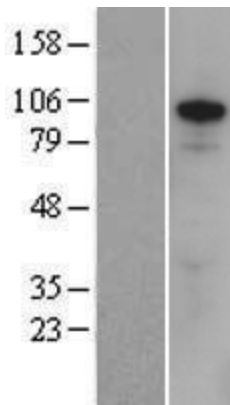
The molecular sequence of this clone aligns with the gene accession number as a point of reference only. However, individual transcript sequences of the same gene can differ through naturally occurring variations (e.g. polymorphisms), each with its own valid existence. This clone is substantially in agreement with the reference, but a complete review of all prevailing variants is recommended prior to use. [More info](#)

OTI Annotation:	This clone was engineered to express the complete ORF with an expression tag. Expression varies depending on the nature of the gene.
Components:	The ORF clone is ion-exchange column purified and shipped in a 2D barcoded Matrix tube containing 10ug of transfection-ready, dried plasmid DNA (reconstitute with 100 ul of water).
Reconstitution Method:	<ol style="list-style-type: none">1. Centrifuge at 5,000xg for 5min.2. Carefully open the tube and add 100ul of sterile water to dissolve the DNA.3. Close the tube and incubate for 10 minutes at room temperature.4. Briefly vortex the tube and then do a quick spin (less than 5000xg) to concentrate the liquid at the bottom.5. Store the suspended plasmid at -20°C. The DNA is stable for at least one year from date of shipping when stored at -20°C.
RefSeq:	NM_003410.4
RefSeq Size:	5811 bp
RefSeq ORF:	2418 bp
Locus ID:	7543
UniProt ID:	P17010
Cytogenetics:	Xp22.11
Domains:	Zfx_Zfy_act, zf-C2H2
Protein Families:	Transcription Factors
MW:	90.3 kDa
Gene Summary:	This gene on the X chromosome is structurally similar to a related gene on the Y chromosome. It encodes a member of the krueppel C2H2-type zinc-finger protein family. The full-length protein contains an acidic transcriptional activation domain (AD), a nuclear localization sequence (NLS) and a DNA binding domain (DBD) consisting of 13 C2H2-type zinc fingers. Studies in mouse embryonic and adult hematopoietic stem cells showed that this gene was required as a transcriptional regulator for self-renewal of both stem cell types, but it was dispensable for growth and differentiation of their progeny. Multiple alternatively spliced transcript variants encoding different isoforms have been identified, but the full-length nature of some variants has not been determined. [provided by RefSeq, May 2010]

Product images:



Circular map for RC214045



Western blot validation of overexpression lysate (Cat# [LY418702]) using anti-DDK antibody (Cat# [TA50011-100]). Left: Cell lysates from untransfected HEK293T cells; Right: Cell lysates from HEK293T cells transfected with RC214045 using transfection reagent MegaTran 2.0 (Cat# [TT210002]).