

Product datasheet for RC213890

Aurora C (AURKC) (NM_001015878) Human Tagged ORF Clone

Product data:

Product Type:	Expression Plasmids
Product Name:	Aurora C (AURKC) (NM_001015878) Human Tagged ORF Clone
Tag:	Myc-DDK
Symbol:	Aurora C
Synonyms:	AIE2; AIK3; ARK3; AurC; aurora-C; HEL-S-90; SPGF5; STK13
Mammalian Cell Selection:	Neomycin
Vector:	pCMV6-Entry (PS100001)
E. coli Selection:	Kanamycin (25 ug/mL)
ORF Nucleotide Sequence:	>RC213890 representing NM_001015878 Red=Cloning site Blue=ORF Green=Tags(s)

TTTTGTAATACGACTCACTATAGGGCGGCCGGAATTCGTCGACTGGATCCGGTACCGAGGAGATCTGCC
GCC**CGATCGCC**

ATGAGCTCCCCAGAGCTGTGGTGCAGCTGGGCAAAGCTCAACCTGCAGGCGAAGAGTTGGCTACAGCAA
ACCAAACAGCCCAGCAGCCCAGCAGCCCAGCCATGCGGCGCCTCACAGTCGATGACTTTGAAATCGGGCG
TCCCTGGGCAAGGGGAAATTTGGGAATGTGTACCTGGCTCGGCTCAAGGAAAGCCATTTTCATTGTGGCC
CTGAAGGTTCTCTCAAGTCGCAGATAGAGAAGGAAGGACTGGAGCACCAGCTGCGCCGGGAAATTGAGA
TCCAGGCTCATCTACAACACCCCAATATCCTGCGCCTGTATAACTATTTCCATGATGCACGCCGGGTGTA
CCTGATTCTGGAATATGCTCCAAGGGGTGAGCTCTACAAGGAGCTGCAGAAAAGCGAGAAATTAGATGAA
CAGCGCACAGCCACGATAATAGAGGAGTTGGCAGATGCCCTGACCTACTGCCATGACAAGAAAGTGATTC
ACAGAGATATTAAGCCAGAGAACCTGCTGCTGGGGTTCAGGGGTGAGGTGAAGATTGCAGATTTTGGCTG
GTCTGTGCACACCCCTCCCTGAGGAGGAAGACAATGTGTGGGACACTGGACTACTTGCCGCCAGAAATG
ATTGAGGGGAGAACATATGATGAAAAGGTGATTTGTGGTGCATTGGAGTGTCTGCTATGAGCTGCTGG
TGGGATATCCACCCTTTGAGAGCGCCTCCACAGTGAGACTTACAGACGCATCCTCAAGGTAGATGTGAG
GTTTCCACTATCAATGCCTCTGGGGCCCGGACTTGATTTCCAGGCTTCTCAGATACCAGCCCTGGAG
AGACTGCCCTGGCCAGATCCTGAAGCACCCCTGGGTTACAGCCCACTCCCGAAGGGTGTGCTCCCT
GTGCTCAGATGGCTTCC

ACGCGTACGCGGCCGCTCGAGCAGAAACTCATCTCAGAAGAGGATCTGGCAGCAAATGATATCCTGGATT
ACAAGGATGACGACGATAAGGTTTAA



[View online »](#)

Protein Sequence: >RC213890 representing NM_001015878
Red=Cloning site Green=Tags(s)

MSSPRAVVQLGKAQPAGEELATANQTAQQPSSPAMRRLTVDDFEIGRPLGKGFNGVYLARLKESHFIVA
 LKVLFKSQIEKEGLEHQLRREIEIQAHLQHPNLRLYNYFHDARRVYLILEYAPRGELYKELQKSEKLDE
 QRTATIIIEELADALTYCHDKKVIHRDIKPENLLLGFRGEVKIADFQWSVHTPSLRKRKTMCGTLDYLPPEM
 IEGRTYDEKVDLWCIGVLVGYPPFESASHSETYRRILKVDVRFPLSMPLGARDLISRLLRYQPLE
 RLPLAQILKHPWVQAHSRRVLPACAQMAS

TRTRPLEQKLISEEDLAANDILDYKDDDDKV

Chromatograms: https://cdn.origene.com/chromatograms/mk6243_b03.zip

Restriction Sites: SgfI-MluI

Cloning Scheme:



ACCN: NM_001015878

ORF Size: 927 bp

OTI Disclaimer: The molecular sequence of this clone aligns with the gene accession number as a point of reference only. However, individual transcript sequences of the same gene can differ through naturally occurring variations (e.g. polymorphisms), each with its own valid existence. This clone is substantially in agreement with the reference, but a complete review of all prevailing variants is recommended prior to use. [More info](#)

OTI Annotation: This clone was engineered to express the complete ORF with an expression tag. Expression varies depending on the nature of the gene.

Components: The ORF clone is ion-exchange column purified and shipped in a 2D barcoded Matrix tube containing 10ug of transfection-ready, dried plasmid DNA (reconstitute with 100 ul of water).

Reconstitution Method:

1. Centrifuge at 5,000xg for 5min.
2. Carefully open the tube and add 100ul of sterile water to dissolve the DNA.
3. Close the tube and incubate for 10 minutes at room temperature.
4. Briefly vortex the tube and then do a quick spin (less than 5000xg) to concentrate the liquid at the bottom.
5. Store the suspended plasmid at -20°C. The DNA is stable for at least one year from date of shipping when stored at -20°C.

RefSeq: [NM_001015878.2](#)

RefSeq Size: 1261 bp

RefSeq ORF: 930 bp

Locus ID: 6795

UniProt ID: [Q9UQB9](#)

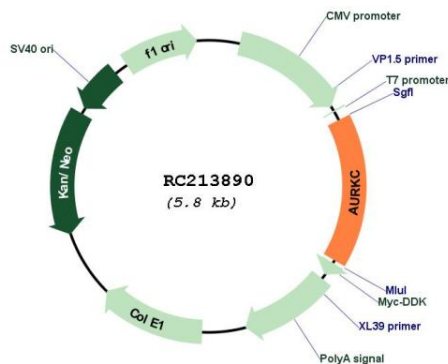
Cytogenetics: 19q13.43

Protein Families: Druggable Genome, Protein Kinase

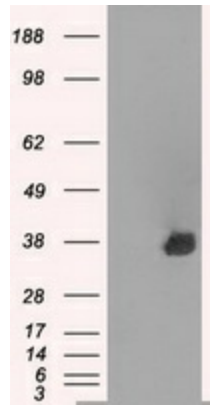
MW: 35.4 kDa

Gene Summary: This gene encodes a member of the Aurora subfamily of serine/threonine protein kinases. The encoded protein is a chromosomal passenger protein that forms complexes with Aurora-B and inner centromere proteins and may play a role in organizing microtubules in relation to centrosome/spindle function during mitosis. This gene is overexpressed in several cancer cell lines, suggesting an involvement in oncogenic signal transduction. Alternative splicing results in multiple transcript variants. [provided by RefSeq, Jul 2008]

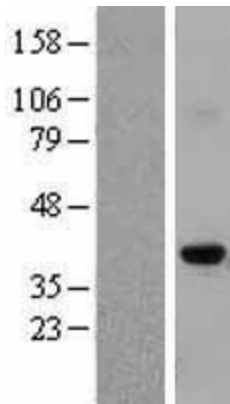
Product images:



Circular map for RC213890



HEK293T cells were transfected with the pCMV6-ENTRY control (Cat# [PS100001], Left lane) or pCMV6-ENTRY AURKC (Cat# RC213890, Right lane) cDNA for 48 hrs and lysed. Equivalent amounts of cell lysates (5 ug per lane) were separated by SDS-PAGE and immunoblotted with anti-AURKC(Cat# [TA500554]). Positive lysates [LY423127] (100ug) and [LC423127] (20ug) can be purchased separately from OriGene.



Western blot validation of overexpression lysate (Cat# [LY423127]) using anti-DDK antibody (Cat# [TA50011-100]). Left: Cell lysates from untransfected HEK293T cells; Right: Cell lysates from HEK293T cells transfected with RC213890 using transfection reagent MegaTran 2.0 (Cat# [TT210002]).