

Product datasheet for RC213815

ULBP4 (RAET1E) (NM_139165) Human Tagged ORF Clone

Product data:

Product Type:	Expression Plasmids
Product Name:	ULBP4 (RAET1E) (NM_139165) Human Tagged ORF Clone
Tag:	Myc-DDK
Symbol:	ULBP4
Synonyms:	bA350J20.7; LETAL; N2DL-4; NKG2DL4; RAET1E2; RL-4; ULBP4
Mammalian Cell Selection:	Neomycin
Vector:	pCMV6-Entry (PS100001)
E. coli Selection:	Kanamycin (25 ug/mL)
ORF Nucleotide Sequence:	>RC213815 ORF sequence Red=Cloning site Blue=ORF Green=Tags(s)

TTTTGTAATACGACTCACTATAGGGCGCCGGGAATTCGTCGACTGGATCCGGTACCGAGGAGATCTGCC
GCC**CGATCGCC**

ATGCGAAGAATATCCCTGACTTCTAGCCCTGTGCGCCTTCTTTTGTCTGCTGTTGCTACTAATAGCCT
TGGAGATCATGGTTGGTGGTCACTCTTTGCTTCAACTTCACTATAAAATCATTGTCCAGACCTGGACA
GCCCTGGTGTGAAGCGCAGGTCTTCTTGAATAAAAATCTTTTCTTCAGTACAACAGTGACAACAACATG
GTCAAACCTCTGGGCCTCTGGGAAGAAGGTAATGCCACCAGCACTTGGGAGAGTTGACCCAAACGC
TGGGAGAAGTGGGCGAGACCTCAGGATGCTCCTTTGTGACATCAAACCCAGATAAAGACCAGTGATCC
TTCCACTCGCAAGTCGAGATGTTTTGTCAACATGAAGCAGAACGGTGCCTGGTGCATCCTGGCAGTTC
ACCATCAATGGAGAGAAATCCCTCCTTTGACGCAATGAACATGACCTGGACAGTAATTAATCATGAAG
CCAGTAAGATCAAGGAGACATGGAAGAAAGACAGAGGGCTGGAAGTATTTTCAGGAAGCTCAAAGGG
AGACTGCGATCACTGGCTCAGGGAATCTTAGGGCACTGGGAGGCAATGCCAGAACCAGCAGTGTCACCA
GTAAATGCTTCAGATATCCACTGGTCTTCTTAGTCTACCAGATAGATGGATCATCCTGGGGCATTCA
TCCTGTTACTTTAATGGGAATTGTTCTCATCTGTCTGGTGGCAAAATGGTGAAGTGGCAGGCTGGTCT
CTGGCCCTTGAGGACGTCT

ACGCGTACGCGGCCGCTCGAGCAGAACTCATCTCAGAAGAGGATCTGGCAGCAAATGATATCCTGGATT
ACAAGGATGACGACGATAAGGTTTAA



[View online »](#)

Protein Sequence: >RC213815 protein sequence
Red=Cloning site Green=Tags(s)

MRRISLTSSPVRLLLFLLLLLIALEIMVGGHSLCFNFTIKSLSRPGQPWCEAQVFLNKNLFLQYNSDNNM
 VKPLGLLGKKVNATSTWGELTQTLGEVGRDLRMLLCDIKPQIKTSDPSTLQVEMFCQHEAERCTGASWQF
 TINGEKSLLFAMNMTWTVINHEASKIKETWKKDRGLEKYFRKLSKGDCHWLREFLGHWEAMPEPTVSP
 VNASDIHWSSSLPDRWILGAFILLLLMGIVLICVWWQNGEWQAGLWPLRTS

TRTRPLEQKLISEEDLAANDILDYKDDDDKV

Chromatograms: https://cdn.origene.com/chromatograms/mk6458_a07.zip

Restriction Sites: SgfI-MluI

Cloning Scheme:



ACCN: NM_139165

ORF Size: 789 bp

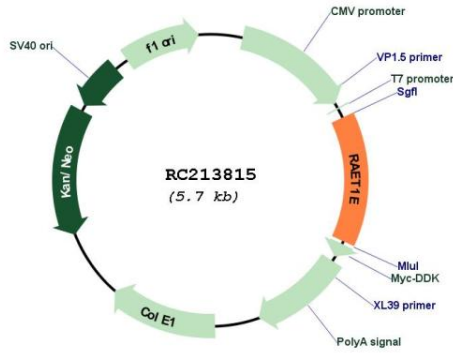
OTI Disclaimer: The molecular sequence of this clone aligns with the gene accession number as a point of reference only. However, individual transcript sequences of the same gene can differ through naturally occurring variations (e.g. polymorphisms), each with its own valid existence. This clone is substantially in agreement with the reference, but a complete review of all prevailing variants is recommended prior to use. [More info](#)

OTI Annotation: This clone was engineered to express the complete ORF with an expression tag. Expression varies depending on the nature of the gene.

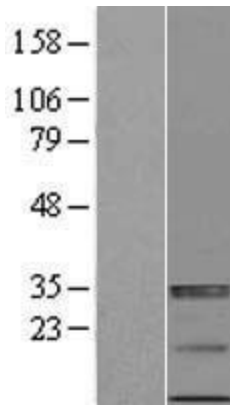
Components: The ORF clone is ion-exchange column purified and shipped in a 2D barcoded Matrix tube containing 10ug of transfection-ready, dried plasmid DNA (reconstitute with 100 ul of water).

Reconstitution Method:	<ol style="list-style-type: none">1. Centrifuge at 5,000xg for 5min.2. Carefully open the tube and add 100ul of sterile water to dissolve the DNA.3. Close the tube and incubate for 10 minutes at room temperature.4. Briefly vortex the tube and then do a quick spin (less than 5000xg) to concentrate the liquid at the bottom.5. Store the suspended plasmid at -20°C. The DNA is stable for at least one year from date of shipping when stored at -20°C.
RefSeq:	NM_139165.2 , NP_631904.1
RefSeq Size:	958 bp
RefSeq ORF:	792 bp
Locus ID:	135250
UniProt ID:	Q8TD07
Cytogenetics:	6q25.1
Protein Families:	Druggable Genome, Transmembrane
Protein Pathways:	Natural killer cell mediated cytotoxicity
MW:	30.1 kDa
Gene Summary:	<p>This gene belong to the RAET1 family, which consists of major histocompatibility complex (MHC) class I-related genes located in a cluster on chromosome 6q24.2-q25.3. This and RAET1G protein differ from other RAET1 proteins in that they have type I membrane-spanning sequences at their C termini rather than glycosylphosphatidylinositol anchor sequences. This protein functions as a ligand for NKG2D receptor, which is expressed on the surface of several types of immune cells, and is involved in innate and adaptive immune responses. Alternatively spliced transcript variants encoding different isoforms have been found for this gene.[provided by RefSeq, Aug 2011]</p>

Product images:



Circular map for RC213815



Western blot validation of overexpression lysate (Cat# [LY408368]) using anti-DDK antibody (Cat# [TA50011-100]). Left: Cell lysates from untransfected HEK293T cells; Right: Cell lysates from HEK293T cells transfected with RC213815 using transfection reagent MegaTran 2.0 (Cat# [TT210002]).