

Product datasheet for RC213737

ATP2B3 (NM_001001344) Human Tagged ORF Clone

Product data:

Product Type:	Expression Plasmids
Product Name:	ATP2B3 (NM_001001344) Human Tagged ORF Clone
Tag:	Myc-DDK
Symbol:	ATP2B3
Synonyms:	CFAP39; CLA2; OPCA; PMCA3; PMCA3a; SCAX1
Mammalian Cell Selection:	Neomycin
Vector:	pCMV6-Entry (PS100001)
E. coli Selection:	Kanamycin (25 ug/mL)
ORF Nucleotide Sequence:	>RC213737 representing NM_001001344 Red=Cloning site Blue=ORF Green=Tags(s)

TTTTGTAATACGACTCACTATAGGGCGGCCGGAATTCGTCGACTGGATCCGGTACCGAGGAGATCTGCC
GCC**CGATCGCC**

ATGGGCGACATGGCCAATAGTTCATCGAGTTCACCCCAAGCCCAAGCAGCAGCAGCGGGATGTCCCCAGG
CTGGAGGCTTTGGGTGCACGCTGGCGGAGCTGCGCACCCCTCATGGAGCTGCGAGGGGCCGAGGCGCTGCA
GAAGATCGAGGAGGCCTACGGGATGTCAGCGGGCTCTGCCGAGGCTGAAGACCTCACCCACAGAGGGC
CTGGCGGACAACCAATGACCTGGAGAAGCGCAGGCAGATCTACGGGCAGAATTATCCCCCAAAGC
AACCCAAGACCTTCTGCAGCTGGTGTGGGAGGCCCTGCAGGACGTGACCCTCATCATCTGGAGGTGGC
TGCCATCGTCTCTGGGCTCTCGTTCTATGCGCCGCCAGGAGAGGAGAGTGAAGCCTGTGGGAATGTG
TCGGGAGGCGCAGAAGATGAGGGCGAGGCCAAGCTGGCTGGATCGAGGGGGCTGCCATCTGTGTCCG
TCATCTGTGTGGTGTGGTCAAGGCTTCAATGACTGGAGCAAGGAGAAGCAGTCCGAGGCCTGCAGAG
CCGAATTGAGCAGGAGCAGAAGTTCACGGTTCATCCGGAACGGGCAGCTCCTCCAGGTCCCGTGGCTGCG
CTGGTGGTGGGGACATTGCCAGGTCAAGTACGGCGACCTGCTGCCAGCCGACGGCGTGTCTATCCAGG
CCAATGACCTCAAGATCGACGAGAGCTCCCTGACGGGCGAGTCTGACCACGTGCCAAGTCAGCTGACAA
AGATCCCATGCTGCTCTCAGGCACTCATGTTCAGCTGCTTGGAGCTGGCGGAGAGGAGGAAGAAGAAGATA
AGAAAGGCAAGCAGCAGGATGGGGCCATGGAGAGTAGCCAGACCAAAGCTAAGAAGCAGGATGGTGCAGT
GGCCATGGAGATGCAGCCCTGAAGAGCGCGGAGGGTGGGGAGATGGAGGAGCGGAGAAGAAGAAGCC
AACGCACCCAAAAAGGAGAAGTCTGTCTTCAGGGGAAGCTCACAAAGCTAGCCGTGCAGATCGGGAAG
CAGGGCTGGTGTGTCTGCCATCACCGTCATCATCTGTGCTCTACTTTGTGATTGAGACGTTTGTCTG
GGAAGGCCGACATGGCTGGCAGAGTGCACGCCGTCTATGTACAATACTTCGTGAAGTTCTTCATCATT
GGTGTCACTGTGCTGGTGTGGCTGTCCAGAGGGCCTGCCTCTGTGTGACCATCTCCTTAGCTTACT
CTGTCAAGAAAATGATGAAAGACAACAACCTGGTGCACCCTGGATGCCTGCGAGACCATGGGCAACGC
CACAGCCATCTGCTCCGACAAGACGGGCACGCTCACCAACCGTATGACCGTGGTCCAGTCTACCTA



[View online »](#)

GGGGACCCCACTACAAAGAGATTCCGGCCCCAGCGCCCTGACCCCTAAGATCCTCGACCTCCTGGTCC
ATGCCATCTCCATCAACAGTGCCTATACCACAAAATACTACCTCCTGAGAAGGAAGCGCCCTCCCACG
CCAGGTGGGCAATAAGACGGAGTGCGCCCTGCTGGGCTTCGTCTTGACCTGAAGCGGGACTTCCAGCCC
GTGCGCGAGCAGATCCCGGAAGACAAGCTTTACAAAGTGTACACCTTCAACTCGGTCCGCAAGTCCATGA
GCACAGTCATCCGCATGCCCGACGGTGGCTTCCGCCTTTCAGCAAGGGGGCCTCAGAGATCCTCTTGAA
AAAGTGCACCAACATCTTGAACAGCAATGGCGAACTCCGGGGCTTTCGGCCTCGGACCGGGACGACATG
TGTGAGGAAGATCATCGAGCCGATGGCTTGCATGGCCTCCGCACCATCTGCATCGCCTACCGGGACTTCT
CTGCAGGCCAGGAGCCCGACTGGGACAACGAGAATGAGGTCGTGGGTGACCTCACCTGCATAGCTGTCTGT
GGCATTGAGGACCCCTGTGCGGCCCGAGGTCCTGAAGCTATCCGAAAATGCCAGCGTGTGGCATCACA
GTCCGCATGGTACTGGGGACAACATCAACACGGCCCGGGCCATCGCAGCCAAATGCGGCATCATCCAGC
CCGGGGAGGACTTCTGTGCCTAGAAGGAAGGAGTTCAACCGCGGATCCGCAATGAGAAAGGCGAGAT
AGAACAGGAGCGGCTGGACAAGGTGTGGCCCAAGCTGAGGGTGTGGCCCGTCTCCACCCGACAAG
CACACTGGTCAAAGGGATTATCGACAGCACCCTGGTGTGAGCAGCGCAGGTGGTGGTGTGACAGGGG
ATGGCACCAACGATGGGCCGGCCCTCAAGAAGGGGACGTGGGCTTCGCCATGGGCATCGCAGGGACCGA
CGTGGCCAAGGAGCCTCCGACATCATCTGACCGATGACAACCTCACCAGCATCGTCAAGCGAGTCATG
TGGGGCCGTAACGTCTATGACAGCATCTCAAGTTCTGCAAGTTCAACTGACCGTCAATGTGGTGGCTG
TGATCGTGGCCTTACAGGTGCCTGCATTACTCAGGACTCTCCTCTCAAAGCCGTGCAGATGTTGTGGGT
GAATTGATCATGGACACATTTGCCTCTCTGGCCCTGGCGACGGAGCCACCCACAGATCGCTGTGCTG
CGGAAGCCGTACGGCCCGACAAGCCCTCATCTCCCGCACCATGATGAAGAACATTCTGGGCCACGCCG
TGTACCAGCTCGCCATCATCTTACCCTGCTGTTGTGCGGGAGCTCTTCTTCGACATCGACAGCGGGAG
GAATGCGCCCTGCACTCGCCACCCTCAGAGCACTACACCATCATCTTCAACACGTTTCGTCATGATGCAG
CTCTTTAACGAGATCAACGCCCGCAAGATCCACGGCGAGAGGAACGTGTTGACGGCATCTTCAGCAACC
CCATCTTCTGCACCATCGTTTTGGGCATTTTCGGGATTCAGATTGTCATCGTCCAGTTTGGCGGGAAGCC
CTTCAGCTGCTCCCACTATCCACAGAACAGTGGCTCTGGTGCCTGTTTGTGGTGTGGGGAGCTGGTC
TGGGGACAGGTATTGCCACCATCCCCACCAGCCAGCTCAAGTGCCTGAAGGAAGCCGGGACGGGCCCG
GGAAGGACGAGATGACCGACGAGGAGCTGGCCGAAGGCGAGGAAGAGATCGACCATGCCAGCGGGAGCT
CCGCAGGGGCCAGATCCTCTGGTTCCGGGGCCTGAACCGGATTACAGACGAGATCCGGGTGGTGAAGCG
TTCCGTAGCTCGCTCTATGAAGGCCTGGAGAAACCAGAATCCAAGACCTCCATTCAACTTTCATGGCCA
CGCCCAGTTTCTGATCAATGACTACCCACAACATCCCGCTCATTGACGACACGGACGTGGACGAGAA
CGAGGAGCGCCTCCGGGCCCCCGCCCCGTCCCCAACCAAGCAACAACGCCATAGACAGCGGCATC
TACCTGACCACGCATGTCACCAAGTCAGCTACCTTTCAGTGTTTCTCCAGTCCGGGAGCCCGCTCC
ACAGCGTGGAGACGTCCCTC

ACGCGTACGCGGCCGCTCGAGCAGAAACTCATCTCAGAAGAGGATCTGGCAGCAAATGATATCCTGGATT
ACAAGGATGACGACGATAAGGTTTAA

Protein Sequence: >RC213737 representing NM_001001344
 Red=Cloning site Green=Tags(s)

```

MGDMANSSIEFHPKPQQQRDVPQAGGFGCTLAELRTLMELRGAEALQKIEEAYGDVSGLCRRLKTSPTTEG
LADNTNDLEKRRQIYQNFIPPKQPKTFLQLVWEALQDVTLLIILEVAIVSLGLSFYAPPGEESEACGNV
SGGAEDEGEAEAGWIEGAAILLVVICVVLVTFNDWSKEKQFRGLQSRIEQEKFVIRNGQLLQVPVAA
LVVGDIAQVKYGDLLPADGVLIQANDLKIDESSLTGESDHRKSADKDPMLLSGTHVMEGSGRMVVTAVG
VNSQTGIIFTLLGAGEEEEKDKKQKQDGAMESSQTKAKKQDGAVAMEMQPLKSAEGGEMEEREKKA
NAPKKEKSVLQGKLTCLAVQIGKAGLVMSAITVILVLYFVIETFFVEGRTWLAECTPVVYQYFVKFFII
GVTVLVVAVPEGLPLAVTISLAYSVKMMKDNLLVRHLDACETMGNATAICSDKTGTLTTRNMTVVQSYL
GDTHYKEIPAPSALTPKILDLLVHAISINSAYTTKILPPEKEGALPRQVGNKTECALLGFVLDLKRDFQP
VREQIPEDKLYKVVTFNSVRKSMSTVIRMPDGGFRLFSGKASEILLKCTNILNSNGELRGRFRDRDDM
VRKIIIEPMACDGLRTICIAYRDFSAGQEPDWDNENEVVDLTCIAVVGIEDPVRPEVPEAIRKCKQRAGIT
VRMVTGDNINTARAIAAKCGI IQPGEFLCLEGKEFNRRIRNEKGEIEQERLDKVPKLRVLRSSPTDK
HTLVKGIIDSTTGEQRQVVAVTGDGTNDGPALKKADVGFAMGIAGTDVAKEASDIILTDDNFTSIVKAVM
WGRNVYDSISKFLQFQLTVNVVAVIVAF TGACITQDSPLKAVQMLWVNLIMDTFASLALATEPPTESLLL
RKPYPGRDKPLISRTMMKNILGHAVYQLAIFTLLFVGELFFDIDSGRNAPLHSPPEHYTIIIFNTFVMMQ
LFNEINARKIHGERNVFDGIFSNPIFCTIVLGTFGIQIVIVQFGGKPFSCSPLSTEQWLWCLFVGVGELV
WGQVIATIPTSQLKCLKEAGHGPCKDEMTEDELAEGEEEIDHAERELRRGQILWFRGLNRIQTQIRVVKA
FRSSLYEGLEKPEKSTSIHNFMATPEFLINDYTHNIPLIDDTDVENEERLRAPPPSPNQNNNAIDSGI
YLTTHVTKSATSSVFSPPGSPPLHSVETSL
  
```

TRTRPLEQKLISEEDLAANDILDYKDDDDKV

Chromatograms: https://cdn.origene.com/chromatograms/mk8001_b08.zip

Restriction Sites: SgfI-MluI

Cloning Scheme:

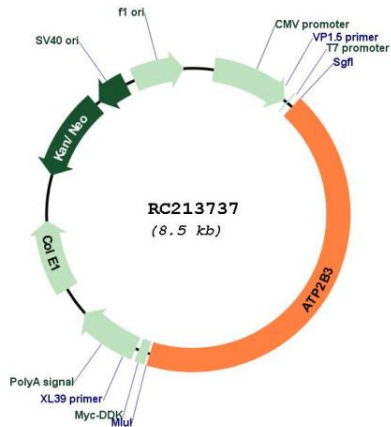


ACCN: NM_001001344

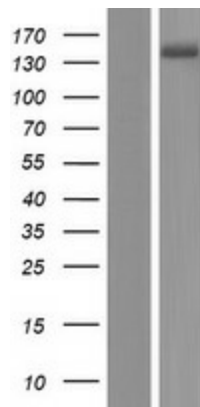
ORF Size: 3660 bp

OTI Disclaimer:	The molecular sequence of this clone aligns with the gene accession number as a point of reference only. However, individual transcript sequences of the same gene can differ through naturally occurring variations (e.g. polymorphisms), each with its own valid existence. This clone is substantially in agreement with the reference, but a complete review of all prevailing variants is recommended prior to use. More info
OTI Annotation:	This clone was engineered to express the complete ORF with an expression tag. Expression varies depending on the nature of the gene.
Components:	The ORF clone is ion-exchange column purified and shipped in a 2D barcoded Matrix tube containing 10ug of transfection-ready, dried plasmid DNA (reconstitute with 100 ul of water).
Reconstitution Method:	<ol style="list-style-type: none">1. Centrifuge at 5,000xg for 5min.2. Carefully open the tube and add 100ul of sterile water to dissolve the DNA.3. Close the tube and incubate for 10 minutes at room temperature.4. Briefly vortex the tube and then do a quick spin (less than 5000xg) to concentrate the liquid at the bottom.5. Store the suspended plasmid at -20°C. The DNA is stable for at least one year from date of shipping when stored at -20°C.
RefSeq:	NM_001001344.1 , NP_001001344.1
RefSeq Size:	6438 bp
RefSeq ORF:	3663 bp
Locus ID:	492
UniProt ID:	Q16720
Cytogenetics:	Xq28
Protein Families:	Druggable Genome, Transmembrane
Protein Pathways:	Calcium signaling pathway
MW:	134 kDa
Gene Summary:	The protein encoded by this gene belongs to the family of P-type primary ion transport ATPases characterized by the formation of an aspartyl phosphate intermediate during the reaction cycle. These enzymes remove bivalent calcium ions from eukaryotic cells against very large concentration gradients and play a critical role in intracellular calcium homeostasis. The mammalian plasma membrane calcium ATPase isoforms are encoded by at least four separate genes and the diversity of these enzymes is further increased by alternative splicing of transcripts. The expression of different isoforms and splice variants is regulated in a developmental, tissue- and cell type-specific manner, suggesting that these pumps are functionally adapted to the physiological needs of particular cells and tissues. This gene encodes the plasma membrane calcium ATPase isoform 3. Alternatively spliced transcript variants encoding different isoforms have been identified. [provided by RefSeq, Jul 2008]

Product images:



Circular map for RC213737



Western blot validation of overexpression lysate (Cat# [LY424329]) using anti-DDK antibody (Cat# [TA50011-100]). Left: Cell lysates from untransfected HEK293T cells; Right: Cell lysates from HEK293T cells transfected with RC213737 using transfection reagent MegaTran 2.0 (Cat# [TT210002]).