

## Product datasheet for **RC213689**

### Eph receptor A1 (EPHA1) (NM\_005232) Human Tagged ORF Clone

#### Product data:

Product Type:	Expression Plasmids
Product Name:	Eph receptor A1 (EPHA1) (NM_005232) Human Tagged ORF Clone
Tag:	Myc-DDK
Symbol:	Eph receptor A1
Synonyms:	EPH; EPHT; EPHT1
Mammalian Cell Selection:	Neomycin
Vector:	pCMV6-Entry (PS100001)
E. coli Selection:	Kanamycin (25 ug/mL)



[View online »](#)

ORF Nucleotide  
Sequence:

>RC213689 representing NM\_005232  
 Red=Cloning site Blue=ORF Green=Tags(s)

TTTTGTAATACGACTCACTATAGGGCGGCCGGGAATTCGTCGACTGGATCCGGTACCGAGGAGATCTGCC  
 GCC**CGCATCGCC**

ATGGAGCGGGCTGGCCCTGGGGCTAGGGCTGGTGTCTGTCTGCGCCCCGCTGCCCCGGGGGCTC  
 ACGCCAAGGAAGTTACTCTGATGGACACAAGCAAGGCACAGGGAGAGCTGGGCTGGCTGGATCCCC  
 AAAAGATGGGTGGAGTGAACAGCAACAGATACTGAATGGGACACCCTGTACATGTACCAGGACTGCCCA  
 ATGCAAGGACGCAGAGACTGACCCTGGCTTCCGCTCCAATTGGATCTACCGGGGGAGGAGGCTTCCC  
 GCGTCCACGTGGAGCTGCAGTTCACCGTGGGACTGCAAGAGTTTCCCTGGGGAGCCGGGCTCTGGG  
 CTGCAAGGAGACCTTCAACCTTCTGTACATGGAGAGTGACCAGGATGTGGGCATTAGCTCCGACGGCCC  
 TTGTTCCAGAAGTAACACGGTGGCTGCAGACCAGAGCTTACCATTGAGACCTTGCCTGTGGCTCCG  
 TGAAGCTGAATGTGGAGCGCTGCTCTGGGCCGCTGACCCGCCGTGGCTCTACCTCGCTTCCACAA  
 CCCGGGTGCCTGTGTGGCCTGGTGTCTGTCCGGTCTTACCAGCGCTGCTGAGACCTGAATGGC  
 TTGGCCCAATCCAGACACTCTGCCTGGCCCCGCTGGGTTGGTGAAGTGGCGGGGACCTGCTTGCCCC  
 ACGCGCGGGCCAGCCCCAGGCCCTCAGGTGCACCCCGCATGCACTGCAGCCCTGATGGCGAGTGGCTGGT  
 GCCTGTAGGACGGTGCCACTGTGAGCCTGGCTATGAGGAAGTGGCAGTGGCGAAGCATGTGTTGCCTGC  
 CCTAGCGGCTCCTACCGATGGACATGGACACACCCCAATTGTCTCACGTGCCCCAGCAGAGCACTGCTG  
 AGTCTGAGGGGGCCACCATCTGTACCTGTGAGAGCGGCCATTACAGAGCTCCCGGGGAGGGCCCCAGGT  
 GGCATGCACAGGTCCCCCTCGGCCCCCGAAACCTGAGCTTCTGCTCAGGGACTCAGCTCTCCCTG  
 CGTTGGGAACCCAGCAGATACGGGGGGACGCCAGGATGTCAGATACAGTGTGAGGTGTTCCAGTGTG  
 AGGGCACAGCACAGGACGGGGGGCCCTGCCAGCCCTGTGGGTGGGCGTGCATTTCTCCGGGGGCCCG  
 GGGGCTACCACACCTGCAGTGCATGTCAATGGCCTTGAACCTTATGCCAACTACACCTTAAATGTGAA  
 GCCAAAATGGAGTGTGAGGCTGGGCAGCTCTGGCCATGCCAGCACCTCAGTCAGCATCAGCATGGGGC  
 ATGCAGAGTCACTGTGAGCCTGTCTCTGAGACTGGTGAAGAAAGAACCGAGGCAACTAGAGCTGACCTG  
 GGCGGGTCCCGGCCCGAAGCCCTGGGGCGAACCTGACCTATGAGTGCACGTGCTGAACCAGGATGAA  
 GAACGGTACCAGATGGTTCTAGAACCAGGGTCTTGTGACAGAGCTGCAGCCTGACACCACATACATCG  
 TCAGAGTCCGAATGCTGACCCCACTGGGCTCTGGCCCTTCTCCCTGATCATGAGTTTCGGACCAGCCC  
 ACCAGTGTCCAGGGCCTGACTGGAGGAGAGATTGTAGCCGTATCTTTGGGCTGCTGCTGGTGCAGCC  
 TTGCTGCTTGGGATTCTCGTTTTCCGGTCCAGGAGAGCCAGCGGCAGAGGCAGAGGCAGCGTGACC  
 GCGCCACCGATGTGGATCGAGAGGACAAGCTGTGGCTGAAGCCTTATGTGGACCTCCAGGCATACGAGGA  
 CCCTGCACAGGGAGCCTTGGACTTTACCCGGGAGCTTGATCCAGCGTGGCTGATGGTGGCACTGTCATA  
 GGAGAAGGAGAGTTTGGGGAAGTGTATCGAGGGACCCTGAGGCTCCCCAGCCAGGACTGCAAGACTGTGG  
 CCATTAAGACCTAAAAGACACATCCCCAGGTGGCCAGTGGTGAACCTCCTTCGAGAGGCAACTATCAT  
 GGGCCAGTTTAGCCACCCGCATATTCTGCATCTGGAAGGCGTCGTACAAAGCGAAAGCCGATCATGATC  
 ATCACAGAATTTATGGAGAATGGAGCCCTGGATGCCTTCTGAGGGAGCGGGAGGACCAGCTGGTCCCTG  
 GGCAGCTAGTGGCCATGCTGCAGGGCATAGCATCTGGCATGAACCTACCTCAGTAATCACAAATATGTCCA  
 CCGGGACCTGGCTGCCAGAAACATCTTGGTGAATCAAAACCTGTGCTGCAAGGTGCTGACTTTGGCCTG  
 ACTCGCCTCCTGGATGACTTTGATGGCACATACGAAACCCAGGGAGGAAAGATCCCTATCCGTTGGACAG  
 CCCCTGAAGCCATTGCCATCGGATCTTACCACAGCCAGCGATGTGTGGAGCTTTGGGATTGTGATGTG  
 GGAGGTGCTGAGCTTTGGGGACAAGCCTTATGGGGAGATGAGCAATCAGGAGGTTATGAAGAGCATTGAG  
 GATGGGTACCGTTGCCCTCCTGTGGACTGCCCTGCCCTCTGTATGAGCTCATGAAGAACTGCTGGG  
 CATATGACCGTGGCCGCCGGCCACACTTCCAGAAGCTTCCAGGCACATCTGGAGCAACTGCTTGCCAAACC  
 CCACTCCCTGCGGACATTGCCAACTTTGACCCAGGGTACTCTTCCCTGCCAGCCTGAGTGGCTCA  
 GATGGGATCCCGTATCGAACCTCTCTGAGTGGCTCGAGTCCATACGCATGAAACGCTACATCCTGCACT  
 TCCACTCGGCTGGGCTGGACACCATGGAGTGTGTGCTGGAGCTGACCGCTGAGGACCTGACGCAGATGG  
 AATCACACTGCCCGGCCACAGAAGCGCATTCTTGCAGTATTCAGGGATTCAAGGAC

**ACGCGT**ACGCGGGCCGCTCGAGCAGAAACTCATCTCAGAAGAGGATCTGGCAGCAAATGATATCCTGGATT  
 ACAAGGATGACGACGATAAGGTTTAA

Protein Sequence: >RC213689 representing NM\_005232  
 Red=Cloning site Green=Tags(s)

MERRWPLGLGLVLLLCAPLPPGAHAKEVTLMDTSKAQGELGWLLDPPKDGWSEQQILNGTPLYMYQDCP  
 MQGRRDTHWLRSNWIYRGEEASRVHVELQFTVRDCKSFPGGAGPLGCKETFNLLYMSDQDVGIQLRRP  
 LFQKVTTVAADQSFTIRDLASGSVKLNVERCSLGRLTRRGLYLAFHNPACVALVSVRVFYQRCPETLNG  
 LAQFPDTPGAGLVEVAGTCLPHARASPRPSGAPRMHCSPDGEWLVPVGRCHCEPGYEEGSGEACVAC  
 PSGSYRMDMDTPHCLTCPQQSTAESEGATICTCESGHRAPGEGPQVACTGPPSAPRNLSFSASGTQLSL  
 RWEPPADTGGQRQDVYSVRCSQCQGTADGQGPCQPCGVGVHFSFGARGLTTPAVHVNGLPEYANYTFNVE  
 AQNGVSLGSSGHASTSVSISMGHAESLSGLSLRLVKKEPRQLELTWAGSRPRSPGANLYELHVLNQDE  
 ERYQMVLEPRVLLTELQPDTTYIVRVRMLTPLGPGFSPDHEFRTSPPVSRGLTGGEIVAVIFGLLLGAA  
 LLLGILVFRSRAQRQRQRDRATDVEDKLVLPYVDLQAYEDPAQGALDFTRELDPAWLMVDTVI  
 GEGEFGEVYRGLRLPSQDCKTVAIKTLKDTSPGGQWVFLREATIMGQFSHPHILHLEGVVTKRKPI  
 ITFEMENGALDAFLREREDQLVPGQLVAMLQGIASGMNYLSNHNYVHRDLAARNILVNQNLCKKVSDFGL  
 TRLLDDFDGTYETQGGKIPIRWTAPEAIAHRIFTTASDVVSFGIWMWEVLSFGDKPYGEMSNQEVMSK  
 DG YRLPPPVDCAPLYELMKNCWAYDRARRPHFKLQAHLEQLLANPHSLRTIANFDPRTLRPLSLSGS  
 DGIPYRTVSEWLESIRMKRYILHFHSAGLDTMECVLELTAEDLTQMGITLPGHQKRILCSIQGFKD

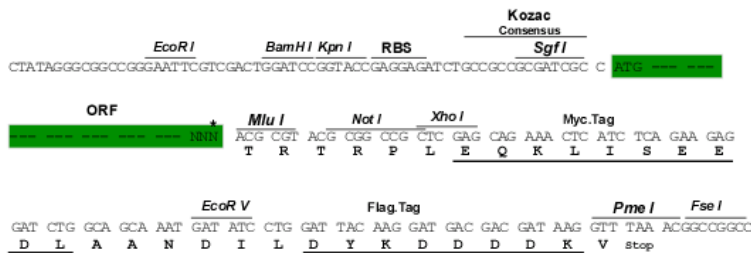
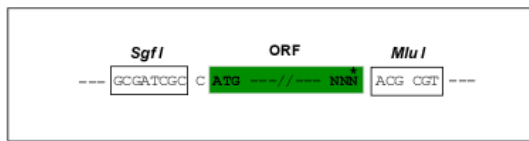
TRTRPLEQKLISEEDLAANDILDYKDDDDKV

Chromatograms: [https://cdn.origene.com/chromatograms/mk6167\\_a05.zip](https://cdn.origene.com/chromatograms/mk6167_a05.zip)

Restriction Sites: SgfI-MluI

Cloning Scheme:

Cloning sites used for ORF Shuttling:



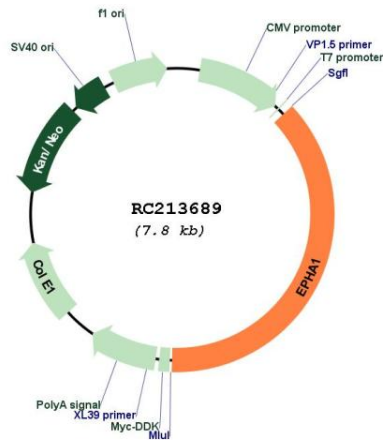
\* The last codon before the Stop codon of the ORF

ACCN: NM\_005232

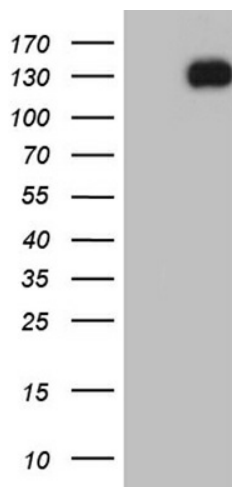
ORF Size: 2928 bp

<b>OTI Disclaimer:</b>	The molecular sequence of this clone aligns with the gene accession number as a point of reference only. However, individual transcript sequences of the same gene can differ through naturally occurring variations (e.g. polymorphisms), each with its own valid existence. This clone is substantially in agreement with the reference, but a complete review of all prevailing variants is recommended prior to use. <a href="#">More info</a>
<b>OTI Annotation:</b>	This clone was engineered to express the complete ORF with an expression tag. Expression varies depending on the nature of the gene.
<b>Components:</b>	The ORF clone is ion-exchange column purified and shipped in a 2D barcoded Matrix tube containing 10ug of transfection-ready, dried plasmid DNA (reconstitute with 100 ul of water).
<b>Reconstitution Method:</b>	<ol style="list-style-type: none"><li>1. Centrifuge at 5,000xg for 5min.</li><li>2. Carefully open the tube and add 100ul of sterile water to dissolve the DNA.</li><li>3. Close the tube and incubate for 10 minutes at room temperature.</li><li>4. Briefly vortex the tube and then do a quick spin (less than 5000xg) to concentrate the liquid at the bottom.</li><li>5. Store the suspended plasmid at -20°C. The DNA is stable for at least one year from date of shipping when stored at -20°C.</li></ol>
<b>RefSeq:</b>	<a href="#">NM_005232.5</a>
<b>RefSeq Size:</b>	3367 bp
<b>RefSeq ORF:</b>	2931 bp
<b>Locus ID:</b>	2041
<b>UniProt ID:</b>	<a href="#">P21709</a>
<b>Cytogenetics:</b>	7q34-q35
<b>Protein Families:</b>	Druggable Genome, Protein Kinase, Transmembrane
<b>Protein Pathways:</b>	Axon guidance
<b>MW:</b>	107.9 kDa
<b>Gene Summary:</b>	This gene belongs to the ephrin receptor subfamily of the protein-tyrosine kinase family. EPH and EPH-related receptors have been implicated in mediating developmental events, particularly in the nervous system. Receptors in the EPH subfamily typically have a single kinase domain and an extracellular region containing a Cys-rich domain and 2 fibronectin type III repeats. The ephrin receptors are divided into 2 groups based on the similarity of their extracellular domain sequences and their affinities for binding ephrin-A and ephrin-B ligands. This gene is expressed in some human cancer cell lines and has been implicated in carcinogenesis. [provided by RefSeq, Jul 2008]

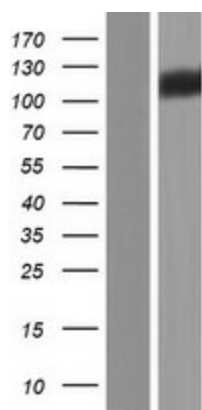
Product images:



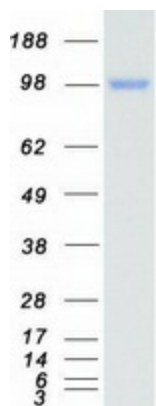
Circular map for RC213689



HEK293T cells were transfected with the pCMV6-ENTRY control (Cat# [PS100001], Left lane) or pCMV6-ENTRY EPHA1 (Cat# RC213689, Right lane) cDNA for 48 hrs and lysed. Equivalent amounts of cell lysates (5 ug per lane) were separated by SDS-PAGE and immunoblotted with anti-EPHA1 (1:2000) (Cat# [TA809666]). Positive lysates [LY401608] (100ug) and [LC401608] (20ug) can be purchased separately from OriGene.



Western blot validation of overexpression lysate (Cat# [LY401608]) using anti-DDK antibody (Cat# [TA50011-100]). Left: Cell lysates from untransfected HEK293T cells; Right: Cell lysates from HEK293T cells transfected with RC213689 using transfection reagent MegaTran 2.0 (Cat# [TT210002]).



Coomassie blue staining of purified EPHA1 protein (Cat# [TP313689]). The protein was produced from HEK293T cells transfected with EPHA1 cDNA clone (Cat# RC213689) using MegaTran 2.0 (Cat# [TT210002]).