

Product datasheet for RC213662

Myelin oligodendrocyte glycoprotein (MOG) (NM_002433) Human Tagged ORF Clone

Product data:

Product Type:	Expression Plasmids
Product Name:	Myelin oligodendrocyte glycoprotein (MOG) (NM_002433) Human Tagged ORF Clone
Tag:	Myc-DDK
Symbol:	Myelin oligodendrocyte glycoprotein
Synonyms:	BTN6; BTNL11; MOGIG2; NRCLP7
Mammalian Cell Selection:	Neomycin
Vector:	pCMV6-Entry (PS100001)
E. coli Selection:	Kanamycin (25 ug/mL)
ORF Nucleotide Sequence:	>RC213662 representing NM_002433 Red=Cloning site Blue=ORF Green=Tags(s)

TTTTGTAATACGACTCACTATAGGGCGGCCGGAATTCGTCGACTGGATCCGGTACCGAGGAGATCTGCC
GCC**CGATCGCC**

ATGGCAAGCTTATCGAGACCCTCTGCCAGCTGCCTCTGCTCCTCCTCCTCCTCCTCCTCCAAG
TGTCTTCAGCTATGCAGGGCAGTTCAGAGTGATAGGACCAAGACACCCTATCCGGGCTCTGGTCGGGA
TGAAGTGAATTGCCATGTCGATATCTCTGGGAAGAAGCTACAGGCATGGAGGTGGGTGGTACCGC
CCCCCTTCTCTAGGGTGGTTCATCTCTACAGAAATGGCAAGGACCAAGATGGAGACCAGGCACCTGAAT
ATCGGGGCCGGACAGAGCTGCTGAAAGATGCTATTGGTGAGGAAAGGTGACTCTCAGGATCCGGAATGT
AAGTTTCTCAGATGAAGGAGTTTACCTGCTTCTCCGAGATCATTCTTACCAAGAGGAGGCAGCAATG
GAATTGAAAGTAGAAGATCCTTTCTACTGGGTGAGCCCTGGAGTGCTGGTTCTCCTCGCGGTGCTGCCTG
TGCTCCTCCTGCAGATCACTGTTGGCCTCGTCTTCTCTGCTGCACTACAGACTGAGAGGAAAACCTTCG
AGCAGAGATAGAGAATCTCCACCGGACTTTTGTACCCCACTTTCTGAGGGTGCCCTGCTGGAAGATAACC
CTGTTTGAATTGTGCCGGTCTTGGACCCTTGGTTGCCTTGATCATCTGCTACAACCTGGCTACATCGAA
GACTAGCAGGGCAATTCTTGAAGAGCTACGAAATCCCTTC

ACGCGTACGCGGCCGCTCGAGCAGAAACTCATCTCAGAAGAGGATCTGGCAGCAAATGATATCCTGGATT
ACAAGGATGACGACGATAAGGTTTAA



[View online »](#)

Protein Sequence: >RC213662 representing NM_002433
Red=Cloning site Green=Tags(s)

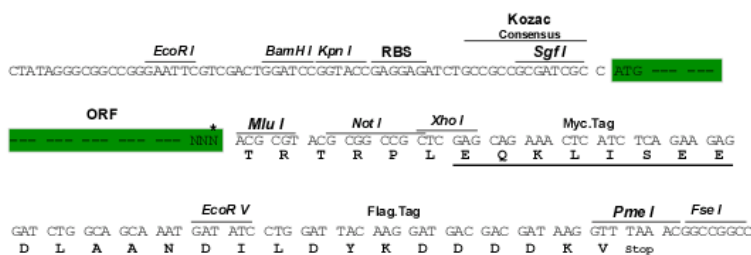
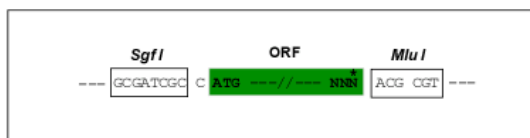
MASLSRPSLPSCLCSFLLLLLLQVSSSYAGQFRVIGPRHPIRALVGDEVELPCRISPGKNATGMEVGWYR
 PPFSRVVHLYRNGKDQDGDQAPEYRGRTELLKDAIGEGKVTLRIRNVRFSDGGFTCFFRDHSYQEEAAM
 ELKVEDPFYVWSPGVLVLLAVLPVLLLQITVGLVFLCLQYRLRGKLAIEIENLHRTFDPHFLRVPCWKIT
 LFIIVPVLGPLVALIICYNWLHRRLAGQFLEELRNPF

TRTRPLEQKLISEEDLAANDILDYKDDDDKV

Restriction Sites: SgfI-MluI

Cloning Scheme:

Cloning sites used for ORF Shuttling:



* The last codon before the Stop codon of the ORF

ACCN: NM_002433

ORF Size: 2333 bp

OTI Disclaimer: The molecular sequence of this clone aligns with the gene accession number as a point of reference only. However, individual transcript sequences of the same gene can differ through naturally occurring variations (e.g. polymorphisms), each with its own valid existence. This clone is substantially in agreement with the reference, but a complete review of all prevailing variants is recommended prior to use. [More info](#)

OTI Annotation: This clone was engineered to express the complete ORF with an expression tag. Expression varies depending on the nature of the gene.

Components: The ORF clone is ion-exchange column purified and shipped in a 2D barcoded Matrix tube containing 10ug of transfection-ready, dried plasmid DNA (reconstitute with 100 ul of water).

Reconstitution Method:

1. Centrifuge at 5,000xg for 5min.
2. Carefully open the tube and add 100ul of sterile water to dissolve the DNA.
3. Close the tube and incubate for 10 minutes at room temperature.
4. Briefly vortex the tube and then do a quick spin (less than 5000xg) to concentrate the liquid at the bottom.
5. Store the suspended plasmid at -20°C. The DNA is stable for at least one year from date of shipping when stored at -20°C.

RefSeq: [NM_002433.1](#)

RefSeq Size: 1869 bp

RefSeq ORF: 759 bp

Locus ID: 4340

UniProt ID: [Q16653](#)

Cytogenetics: 6p22.1

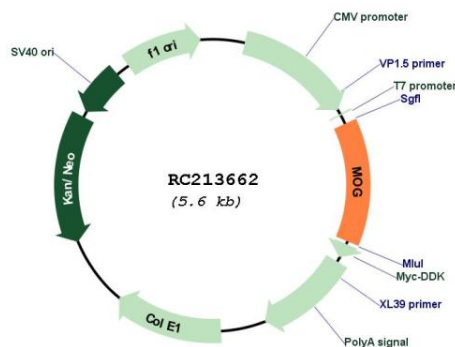
Domains: ig, IGv, IG

Protein Families: Transmembrane

MW: 28.18 kDa

Gene Summary: The product of this gene is a membrane protein expressed on the oligodendrocyte cell surface and the outermost surface of myelin sheaths. Due to this localization, it is a primary target antigen involved in immune-mediated demyelination. This protein may be involved in completion and maintenance of the myelin sheath and in cell-cell communication. Alternatively spliced transcript variants encoding different isoforms have been identified. [provided by RefSeq, Jul 2008]

Product images:



Circular map for RC213662