

Product datasheet for **RC213364**

Tau (MAPT) (NM_016841) Human Tagged ORF Clone

Product data:

Product Type:	Expression Plasmids
Product Name:	Tau (MAPT) (NM_016841) Human Tagged ORF Clone
Tag:	Myc-DDK
Symbol:	Tau
Synonyms:	DDPAC; FTDP-17; MAPTL; MSTD; MTBT1; MTBT2; PPND; PPP1R103; TAU; tau-40
Mammalian Cell Selection:	Neomycin
Vector:	pCMV6-Entry (PS100001)
E. coli Selection:	Kanamycin (25 ug/mL)
ORF Nucleotide Sequence:	>RC213364 representing NM_016841 Red=Cloning site Blue=ORF Green=Tags(s)

TTTTGTAATACGACTCACTATAGGGCGGCCGGAATTCGTCGACTGGATCCGGTACCGAGGAGATCTGCC
GCC**CGATCGCC**

ATGGCTGAGCCCCGCCAGGAGTTCGAAGTATGGAAGATCACGCTGGGACGTACGGGTTGGGGACAGGA
AAGATCAGGGGGCTACACCATGCACCAAGACCAAGAGGGTGACACGGACGCTGGCCTGAAAGCTGAAGA
AGCAGGCATTGGAGACACCCCGCTGGAAGACGAAGCTGCTGGTCACGTGACCCAAGCTCGCATGGTC
AGTAAAAGCAAAGACGGGACTGGAAGCGATGACAAAAAGCCAAGGGGGCTGATGGTAAAACGAAGATCG
CCACACCGCGGGGAGCAGCCCTCCAGGCCAGAAGGGCCAGGCCAACGCCACCAGGATCCAGCAAAAAC
CCGCCCCGCTCCAAAGACACCACCCAGCTCTGGTGAACCTCCAAAATCAGGGGATCGCAGCGGCTACAGC
AGCCCCGGCTCCCCAGGCACTCCCGGCAGCCGCTCCCGCACCCCGTCCCTTCCAACCCACCCACCCGGG
AGCCCAAGAAGGTGGCAGTGGTCCGTACTCCACCAAGTCGCCGCTTCCGCCAAGAGCCGCTGCAGAC
AGCCCCCGTGCCATGCCAGACCTGAAGAATGTCAAGTCCAAGATCGGCTCCACTGAGAACCTGAAGCAC
CAGCCGGGAGGCGGAAGGTGCAATAGTCTACAAACAGTTGACCTGAGCAAGGTGACCTCCAAGTGTG
GCTCATTAGGCAACATCCATCATAAACCAGGAGGTGGCCAGGTGGAAGTAAAATCTGAGAAGCTTGACTT
CAAGGACAGAGTCCAGTCAAGATTGGGTCCCTGGACAATACCCACGTCCCTGGCGGAGGAAATAAA
AAGATTGAAACCCACAAGCTGACCTCCGCGAGAACGCCAAAGCCAAGACAGACACGGGGCGGAGATCG
TGTACAAGTCGCCAGTGGTGTCTGGGGACACGTCTCCACGCATCTCAGCAATGTCTCCTCCACCGGCGAG
CATCGACATGGTAGACTCGCCCCAGCTCGCCACGCTAGCTGACGAGGTGTCTGCCTCCCTGGCCAAGCAG
GGTTTG

ACGCGTACGCGGCCGCTCGAGCAGAACTCATCTCAGAAGAGGATCTGGCAGCAATGATATCCTGGATT
ACAAGGATGACGACGATAAGGTTAA



[View online »](#)

Protein Sequence: >RC213364 representing NM_016841
Red=Cloning site Green=Tags(s)

MAEPRQEFVEMDHAGTYGLGDRKDQGGYTMHQDQEGDTDAGLKAEAEAGIGDTPSLEDEAAGHVQARMV
 SKSKDGTGSDDKKAKGADGKTKIATPRGAAPPGQKQANATRIPAKTPPAPKTPPSSGEPKSGDRSGYS
 SPGSPGTPGSRSRTPSLPTPTREPKKVAVVRTPPKSPSSAKSRLQTAPVMPDLKNVSKIGSTENLKH
 QPGGGKQIVYKPVLDLKVTSKCGSLGNIHHKPGGGQVEVQSEKLDKDRVQSKIGSLDNI THVPGGGNK
 KIETHKLTFRENAKAKTDHGAEIVYKSPVVS GDTSPRHL SNV SSTGSIDMVDSPQLATLADEV SASLAKQ
 GL

TRTRPLEQKLISEEDLAANDILDYKDDDDKV

Chromatograms: https://cdn.origene.com/chromatograms/mk6511_d10.zip

Restriction Sites: SgfI-MluI

Cloning Scheme:



ACCN: NM_016841

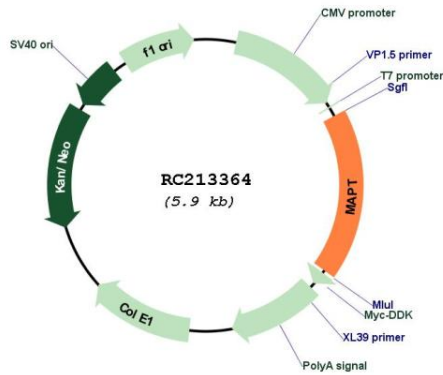
ORF Size: 1056 bp

OTI Disclaimer: Due to the inherent nature of this plasmid, standard methods to replicate additional amounts of DNA in E. coli are highly likely to result in mutations and/or rearrangements. Therefore, OriGene does not guarantee the capability to replicate this plasmid DNA. Additional amounts of DNA can be purchased from OriGene with batch-specific, full-sequence verification at a reduced cost. Please contact our customer care team at custsupport@origene.com or by calling 301.340.3188 option 3 for pricing and delivery.

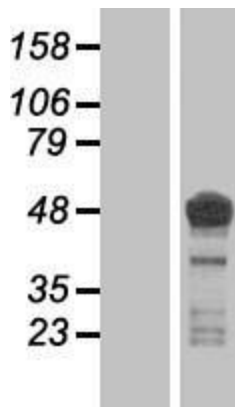
The molecular sequence of this clone aligns with the gene accession number as a point of reference only. However, individual transcript sequences of the same gene can differ through naturally occurring variations (e.g. polymorphisms), each with its own valid existence. This clone is substantially in agreement with the reference, but a complete review of all prevailing variants is recommended prior to use. [More info](#)

OTI Annotation:	This clone was engineered to express the complete ORF with an expression tag. Expression varies depending on the nature of the gene.
Components:	The ORF clone is ion-exchange column purified and shipped in a 2D barcoded Matrix tube containing 10ug of transfection-ready, dried plasmid DNA (reconstitute with 100 ul of water).
Reconstitution Method:	<ol style="list-style-type: none">1. Centrifuge at 5,000xg for 5min.2. Carefully open the tube and add 100ul of sterile water to dissolve the DNA.3. Close the tube and incubate for 10 minutes at room temperature.4. Briefly vortex the tube and then do a quick spin (less than 5000xg) to concentrate the liquid at the bottom.5. Store the suspended plasmid at -20°C. The DNA is stable for at least one year from date of shipping when stored at -20°C.
RefSeq:	NM_016841.5
RefSeq Size:	2529 bp
RefSeq ORF:	1059 bp
Locus ID:	4137
UniProt ID:	P10636
Cytogenetics:	17q21.31
Domains:	tubulin-binding
Protein Families:	Druggable Genome
Protein Pathways:	Alzheimer's disease, MAPK signaling pathway
MW:	36.6 kDa
Gene Summary:	This gene encodes the microtubule-associated protein tau (MAPT) whose transcript undergoes complex, regulated alternative splicing, giving rise to several mRNA species. MAPT transcripts are differentially expressed in the nervous system, depending on stage of neuronal maturation and neuron type. MAPT gene mutations have been associated with several neurodegenerative disorders such as Alzheimer's disease, Pick's disease, frontotemporal dementia, cortico-basal degeneration and progressive supranuclear palsy. [provided by RefSeq, Jul 2008]

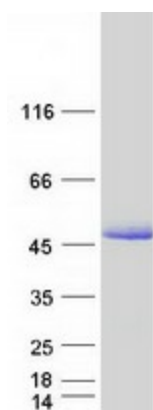
Product images:



Circular map for RC213364



Western blot validation of overexpression lysate (Cat# [LY413823]) using anti-DDK antibody (Cat# [TA50011-100]). Left: Cell lysates from untransfected HEK293T cells; Right: Cell lysates from HEK293T cells transfected with RC213364 using transfection reagent MegaTran 2.0 (Cat# [TT210002]).



Coomassie blue staining of purified MAPT protein (Cat# [TP313364]). The protein was produced from HEK293T cells transfected with MAPT cDNA clone (Cat# RC213364) using MegaTran 2.0 (Cat# [TT210002]).