

Product datasheet for **RC213353**

VCAM1 (NM_080682) Human Tagged ORF Clone

Product data:

Product Type:	Expression Plasmids
Product Name:	VCAM1 (NM_080682) Human Tagged ORF Clone
Tag:	Myc-DDK
Symbol:	VCAM1
Synonyms:	CD106; INCAM-100
Vector:	pCMV6-Entry (PS100001)
E. coli Selection:	Kanamycin (25 ug/mL)
Cell Selection:	Neomycin



[View online »](#)

ORF Nucleotide Sequence:

>RC213353 representing NM_080682
 Red=Cloning site Blue=ORF Green=Tags(s)

TTTTGTAATACGACTCACTATAGGGCGGCCGGAATTCGTCGACTGGATCCGGTACCGAGGAGATCTGCC
 GCC**CGGATCGCC**

ATGCCTGGGAAGATGGTCGTGATCCTTGGAGCCTCAAATATACTTTGGATAATGTTTGCAGCTTCTCAAG
 CTTTTAAATCGAGACCACCCAGAATCTAGATATCTTGCTCAGATTGGTGACTCCGTCTCATTGACTTG
 CAGCACACAGGCTGTGAGTCCCATTTTTCTCTTGGAGAACCAGATAGATAGTCCACTGAATGGGAAG
 GTGACGAATGAGGGGACCACATCTACGCTGACAAATGAATCCTGTTAGTTTTGGGAACGAACACTCTTACC
 TGTGCACAGCAACTTGTGAATCTAGGAAATGGAAAAAGGAATCCAGGTGGAGATCTACTCTTTCTCAA
 GGATCCAGAGATTCATTTGAGTGGCCCTCTGGAGGCTGGGAAGCCGATCACAGTCAAGTGTTCAGTTGCT
 GATGTATACCCATTTGACAGGCTGGAGATAGACTTACTGAAAGGAGATCATCTCATGAAGAGTCAGGAAT
 TTCTGGAGGATGCAGACAGGAAGTCCCTGGAAACCAAGAGTTTGGAAAGTAACTTTACTCCTGTCATTGA
 GGATATTGGAAAAGTTCTTGTGTTGCCGAGCTAAATTACACATTGATGAAATGGATTCTGTGCCACAGTA
 AGGCAGGCTGTAAAAGAATTGCAAGTCTACATATCACCAAGAATACAGTATTTCTGTGAATCCATCCA
 CAAAGCTGCAAGAAGGTGGCTCTGTGACCATGACCTGTTCCAGCGAGGGTCTACCAGCTCCAGAGATTTT
 CTGGAGTAAGAAATTAGATAATGGGAATCTACAGCACCTTTCTGGAAATGCAACTCTCACCTAATTGCT
 ATGAGGATGGAAGATTCTGGAATTTATGTGTGTGAAGGAGTTAATTTGATTGGGAAAAACAGAAAAGAGG
 TGGAAATTAATTGTTCAAGCATTCCCTAGAGATCCAGAAATCGAGATGAGTGGTGGCCTCGTGAATGGGAG
 CTCTGTCACTGTAAGCTGCAAGGTTCTAGCGTGTACCCCTTGACCGGCTGGAGATTGAATTACTTAAG
 GGGGAGACTATTCTGGAGAATATAGAGTTTTGGAGGATACGGATATGAAATCTCTAGAGAACAAAAGTT
 TGGAAATGACCTTCATCCCTACCATTGAAGATACTGGAAAAGCTTTGTTTGTGAGGCTAAGTTACATAT
 TGATGACATGGAATTCGAACCCAAACAAAGGCAGAGTACGAAACACTTTATGTCAATGTTGCCCCAGA
 GATAACAACCGTCTTGGTCAGCCCTTCTCCATCCTGGAGGAAGGCAGTTCTGTGAATATGACATGCTTGA
 GCCAGGGCTTTCTGCTCCGAAAATCCTGTGGAGCAGGCAGCTCCCTAACGGGGAGCTACAGCCTTTTC
 TGAGAATGCAACTCTCACCTAATTTCTACAAAATGGAAGATTCTGGGGTTTATTTATGTGAAGGAATT
 AACCAGGCTGGAAGAAGCAGAAAGGAAGTGAATTAATTATCCAAGTTACTCCAAAAGACATAAACTTA
 CAGCTTTTCTTCTGAGAGTGTCAAAGAAGGAGACACTGTCATCATCTTGTACATGTGGAATGTTCC
 AGAAACATGGATAATCCTGAAGAAAAAGCGGAGACAGGAGACACAGTACTAAAACTATAGATGGCGCC
 TATACCATCCGAAAGGCCAGTTGAAGGATGCGGGAGTATGAATGTGAATCTAAAAACAAAGTTGGCT
 CACAATTAAGAAGTTTAAACACTTGATGTTCAAGGAAGAGAAAACAACAAAGACTATTTTTCTCCTGAGCT
 TCTCGTCTCTATTTTGCATCCTCCTTAATAATACCTGCCATTGGAATGATAATTTACTTTGCAAGAAAA
 GCCAACATGAAGGGGTATATAGTCTTGTAGAAGCACAGAAGTCAAAAGTG

ACGCGTACGCGGCCGCTCGAGCAGAACTCATCTCAGAAGAGGATCTGGCAGCAATGATATCCTGGATT
 ACAAGGATGACGACGATAAGGTTTAA

Protein Sequence: >RC213353 representing NM_080682
 Red=Cloning site Green=Tags(s)

MPGKMMVILGASNILWIMFAASQAFKIETTPESRYLAQIGDSVSLTCSTTGCEPFFSWRTQIDSPLNGK
 VTNEGTTSTLTMNPVSGNEHSYLCTATCESRKLEKGIQVEIYSFPKDPEIHLSPLEAGKPITVKCSVA
 DVYFPDRLEIDLKGDHLMKSQEFLEDADRKSLETKSLEVTFPTVIEDIGKVLVCRAKLHIDEMDSVPTV
 RQAVKELQVYISPKNTVISVNPSTKLQEGGSVTMTCSEGLPAPEIFWSKKLDNGNLQHLSGNATLTLIA
 MRMEDSGIYVCEGVNLI GKNRKEVELIVQAFPRDPEIEMSGGLVNGSSVTV SCKVPSVYPLDRLEIELLK
 GETILENIEFLEDTDMKSLENK SLEMTFIPTIEDTGKALVCQAKLHIDDMEFEPKQRQSTQTL YVNVAPR
 DTTVLVSPSSILEEGSSVNMTCLSQGFAPAKILWSRQLPNGELQPLSENATLTLISTKMEDSGVYLCEGI
 NQAGRSRKEVELIIQVTPKDIKL TAFPSESVKEGDTVII SCTCGNVPETWII LKKAETGDTV LKSIDGA
 YTIRKAQLKDAGVYECESKNK VGSQRLRSLTLDVQGRENNKDYF SPELLVLYFASLLIIPAIGMIIYFARK
 ANMKGSYSLVEAQKSKV

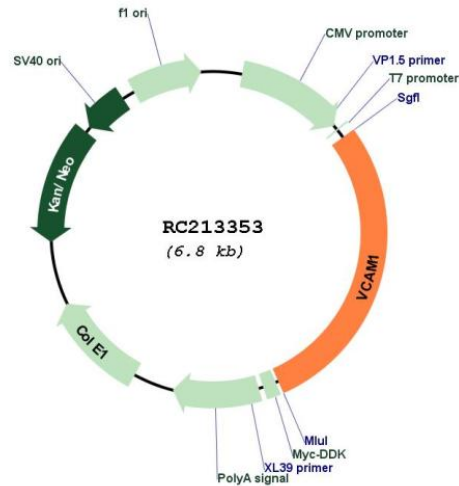
TRTRPLEQKLISEEDLAANDILDYKDDDDKV

Restriction Sites:

SgfI-MluI

Cloning Scheme:



Plasmid Map:


ACCN: NM_080682

ORF Size: 1941 bp

OTI Disclaimer: The molecular sequence of this clone aligns with the gene accession number as a point of reference only. However, individual transcript sequences of the same gene can differ through naturally occurring variations (e.g. polymorphisms), each with its own valid existence. This clone is substantially in agreement with the reference, but a complete review of all prevailing variants is recommended prior to use. [More info](#)

OTI Annotation: This clone was engineered to express the complete ORF with an expression tag. Expression varies depending on the nature of the gene.

Components: The ORF clone is ion-exchange column purified and shipped in a 2D barcoded Matrix tube containing 10ug of transfection-ready, dried plasmid DNA (reconstitute with 100 ul of water).

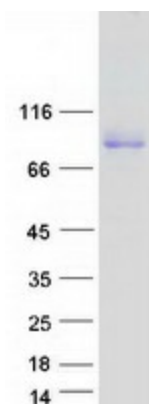
Reconstitution Method:

1. Centrifuge at 5,000xg for 5min.
2. Carefully open the tube and add 100ul of sterile water to dissolve the DNA.
3. Close the tube and incubate for 10 minutes at room temperature.
4. Briefly vortex the tube and then do a quick spin (less than 5000xg) to concentrate the liquid at the bottom.
5. Store the suspended plasmid at -20°C. The DNA is stable for at least one year from date of shipping when stored at -20°C.

RefSeq: [NM_080682.2](#), [NP_542413.1](#)

RefSeq Size:	2944 bp
RefSeq ORF:	1944 bp
Locus ID:	7412
UniProt ID:	P19320
Cytogenetics:	1p21.2
Domains:	ig, IGv, IGc2, IG
Protein Families:	Druggable Genome, ES Cell Differentiation/IPS, Transmembrane
Protein Pathways:	Cell adhesion molecules (CAMs), Leukocyte transendothelial migration
MW:	71.3 kDa
Gene Summary:	This gene is a member of the Ig superfamily and encodes a cell surface sialoglycoprotein expressed by cytokine-activated endothelium. This type I membrane protein mediates leukocyte-endothelial cell adhesion and signal transduction, and may play a role in the development of atherosclerosis and rheumatoid arthritis. Three alternatively spliced transcripts encoding different isoforms have been described for this gene. [provided by RefSeq, Dec 2010]

Product images:



Coomassie blue staining of purified VCAM1 protein (Cat# [TP313353]). The protein was produced from HEK293T cells transfected with VCAM1 cDNA clone (Cat# RC213353) using MegaTran 2.0 (Cat# [TT210002]).