

Product datasheet for RC212975

Macrophage inflammatory protein 5 (CCL15) (NM_032964) Human Tagged ORF Clone

Product data:

Product Type: Expression Plasmids
Product Name: Macrophage inflammatory protein 5 (CCL15) (NM_032964) Human Tagged ORF Clone
Tag: Myc-DDK
Symbol: Macrophage inflammatory protein 5
Synonyms: HCC-2; HMRP-2B; Lkn-1; LKN1; MIP-1d; MIP-5; NCC-3; NCC3; SCYA15; SCYL3; SY15
Mammalian Cell Selection: Neomycin
Vector: pCMV6-Entry (PS100001)
E. coli Selection: Kanamycin (25 ug/mL)
ORF Nucleotide Sequence: >RC212975 representing NM_032964
 Red=Cloning site Blue=ORF Green=Tags(s)

TTTTGTAATACGACTCACTATAGGGCGGCCGGAATTCGTCGACTGGATCCGGTACCGAGGAGATCTGCC
 GCC**CGATCGCC**

ATGAAGGTCTCCGTGGCTGCCCTCCTGCCTCATGCTTGTGCTGTCCTTGGATCCCAGGCCAGTTCA
 CAAATGATGCAGAGACAGAGTTAATGATGTCAAAGCTTCCACTGGAAAATCCAGTAGTTCTGAACAGCTT
 TCACTTGTGCTGACTGCTGCACCTCCTACATCTCACAAGCATCCCGTGTTCACTCATGAAAAGTTAT
 TTTGAAACGAGCAGCGAGTGTCCAAGCCAGGTGCATATTCCTACCAAGAAGGGCGGCAAGTCTGTG
 CCAAACCCAGTGGTCCGGGAGTTCAGGATTGCATGAAAAAGCTGAAGCCCTACTCAATA

ACGCGTACGCGGCCGCTCGAGCAGAAACTCATCTCAGAAGAGGATCTGGCAGCAAATGATATCCTGGATT
 ACAAGGATGACGACGATAAGGTTTAA

Protein Sequence: >RC212975 representing NM_032964
 Red=Cloning site Green=Tags(s)
 MKVSVAAALSCLMLVAVLGSQAQFTNDAETELMMSKLPLENPVVLSNFHFAADCCTSYISQSIPLCSLMKSY
 FETSSECSKPGVIFLTKKGRQVCAKPSGPGVQDCMKKLPYSI

TRTRPLEQKLISEEDLAANDILDYKDDDDKV

Chromatograms: https://cdn.origene.com/chromatograms/mk6497_c06.zip

Restriction Sites: SgfI-MluI



[View online »](#)

Cloning Scheme:


ACCN: NM_032964

ORF Size: 339 bp

OTI Disclaimer: The molecular sequence of this clone aligns with the gene accession number as a point of reference only. However, individual transcript sequences of the same gene can differ through naturally occurring variations (e.g. polymorphisms), each with its own valid existence. This clone is substantially in agreement with the reference, but a complete review of all prevailing variants is recommended prior to use. [More info](#)

OTI Annotation: This clone was engineered to express the complete ORF with an expression tag. Expression varies depending on the nature of the gene.

Components: The ORF clone is ion-exchange column purified and shipped in a 2D barcoded Matrix tube containing 10ug of transfection-ready, dried plasmid DNA (reconstitute with 100 ul of water).

- Reconstitution Method:**
1. Centrifuge at 5,000xg for 5min.
 2. Carefully open the tube and add 100ul of sterile water to dissolve the DNA.
 3. Close the tube and incubate for 10 minutes at room temperature.
 4. Briefly vortex the tube and then do a quick spin (less than 5000xg) to concentrate the liquid at the bottom.
 5. Store the suspended plasmid at -20°C. The DNA is stable for at least one year from date of shipping when stored at -20°C.

RefSeq: [NM_032964.1](#)

RefSeq Size: 1344 bp

RefSeq ORF: 341 bp

Locus ID: 6359

Cytogenetics: 17q12

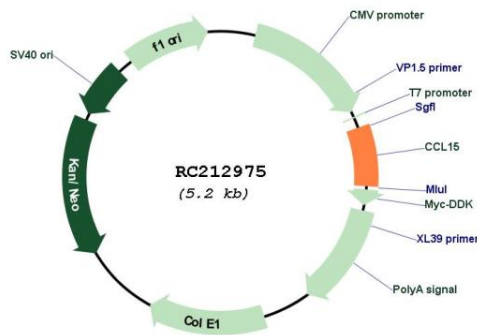
Protein Families: Druggable Genome, Secreted Protein, Transmembrane

Protein Pathways: Chemokine signaling pathway, Cytokine-cytokine receptor interaction

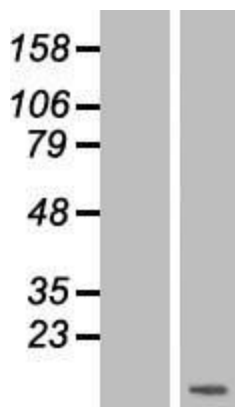
MW: 12.7 kDa

Gene Summary: This gene is located in a cluster of similar genes in the same region of chromosome 17. These genes encode CC cytokines, which are secreted proteins characterized by two adjacent cysteines. The product of this gene is chemotactic for T cells and monocytes, and acts through C-C chemokine receptor type 1 (CCR1). The proprotein is further processed into numerous smaller functional peptides. Naturally-occurring readthrough transcripts occur from this gene into the downstream gene, CCL14 (chemokine (C-C motif) ligand 14). [provided by RefSeq, Jan 2013]

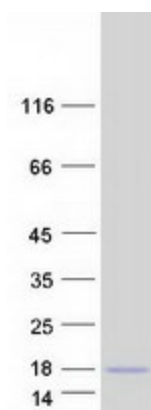
Product images:



Circular map for RC212975



Western blot validation of overexpression lysate (Cat# [LY418174]) using anti-DDK antibody (Cat# [TA50011-100]). Left: Cell lysates from untransfected HEK293T cells; Right: Cell lysates from HEK293T cells transfected with [RC219289] using transfection reagent MegaTran 2.0 (Cat# [TT210002]).



Coomassie blue staining of purified CCL15 protein (Cat# [TP312975]). The protein was produced from HEK293T cells transfected with CCL15 cDNA clone (Cat# RC212975) using MegaTran 2.0 (Cat# [TT210002]).