

Product datasheet for RC212924

SOD2 (NM_001024465) Human Tagged ORF Clone

Product data:

Product Type:	Expression Plasmids
Product Name:	SOD2 (NM_001024465) Human Tagged ORF Clone
Tag:	Myc-DDK
Symbol:	SOD2
Synonyms:	GClnc1; IPO-B; IPOB; Mn-SOD; MNSOD; MVCD6
Mammalian Cell Selection:	Neomycin
Vector:	pCMV6-Entry (PS100001)
E. coli Selection:	Kanamycin (25 ug/mL)
ORF Nucleotide Sequence:	>RC212924 ORF sequence Red=Cloning site Blue=ORF Green=Tags(s)

TTTTGTAATACGACTCACTATAGGGCGCCGGGAATTCGTCGACTGGATCCGGTACCGAGGAGATCTGCC
GCC**CGATCGCC**

ATGTTGAGCCGGGCAGTGTGCGGCACCAGCAGGCAGCTGGCTCCGGTTTTGGGGTATCTGGGCTCCAGGC
AGAAGCACAGCCTCCCCGACCTGCCCTACGACTACGGCGCCCTGGAACCTCACATCAACGCGCAGATCAT
GCAGCTGCACCACAGCAAGCACCACGGCCCTACGTGAACAACCTGAACGTCACCGAGGAGAAGTACCAG
GAGGCGTTGGCCAAGGGAGATGTTACAGCCAGATAGCTCTTCAGCCTGCACTGAAGTTCAATGGTGGTG
GTCATATCAATCATAGCATTTTTCTGGACAAACCTCAGCCCTAACGGTGGTGGAGAACCCAAAGGGGAGTT
GCTGGAAGCCATCAAACGTGACTTTGGTTCCTTTGACAAGTTAAGGAGAAGCTGACGGCTGCATCTGTT
GGTGTCCAAGGCTCAGGTTGGGTTGGCTTGGTTCAATAAGGAACGGGACACTTACAAATTGCTGCTT
GTCCAAATCAGGATCCACTGCAAGGAACAACAGGCCTTATTCCACTGCTGGGGATTGATGTGTGGGGAGCA
CGCTTACTACCTTCAGTATAAAATGTCAGGCCTGATTATCTAAAAGCTATTTGGAATGTAATCAACTGG
GAGAATGTAAGTAAAAGATACATGGCTTGCAAAAAG

ACGCGTACGCGGGCCGCTCGAGCAGAAACTCATCTCAGAAGAGGATCTGGCAGCAAATGATATCCTGGATT
ACAAGGATGACGACGATAAGGTTTAA



[View online »](#)

Protein Sequence: >RC212924 protein sequence
 Red=Cloning site Green=Tags(s)

MLSRAVCGTSRQLAPVLGYLGSRQKHSLPDLPYDYGALEPHINAQIMQLHHSKHHAAYVNNLNVTEEKYQ
 EALAKGDVTAQIALQPALKFNGGGHINHSIFWTNLSPNGGGEPKGELLEAIKRDGSGFDKFKKELTAASV
 GVQGGSGWLGFNKERGHLQIAACPNDPLQGTGLIPLLIDVWEHAYYLQYKNVDPDYLKAIWNVINW
 ENVTERYMACKK

TRTRPLEQKLISEEDLAANDILDYKDDDDKV

Chromatograms: https://cdn.origene.com/chromatograms/mk6304_d07.zip

Restriction Sites: SgfI-MluI

Cloning Scheme:

Cloning sites used for ORF Shuttling:



* The last codon before the Stop codon of the ORF

ACCN: NM_001024465

ORF Size: 666 bp

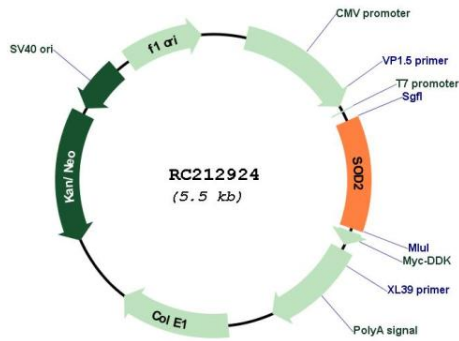
OTI Disclaimer: Due to the inherent nature of this plasmid, standard methods to replicate additional amounts of DNA in E. coli are highly likely to result in mutations and/or rearrangements. Therefore, OriGene does not guarantee the capability to replicate this plasmid DNA. Additional amounts of DNA can be purchased from OriGene with batch-specific, full-sequence verification at a reduced cost. Please contact our customer care team at custsupport@origene.com or by calling 301.340.3188 option 3 for pricing and delivery.

The molecular sequence of this clone aligns with the gene accession number as a point of reference only. However, individual transcript sequences of the same gene can differ through naturally occurring variations (e.g. polymorphisms), each with its own valid existence. This clone is substantially in agreement with the reference, but a complete review of all prevailing variants is recommended prior to use. [More info](#)

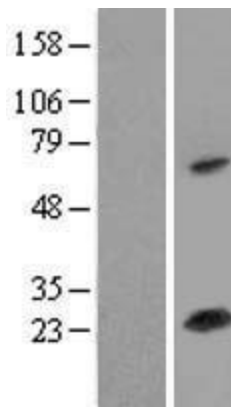
OTI Annotation: This clone was engineered to express the complete ORF with an expression tag. Expression varies depending on the nature of the gene.

Components:	The ORF clone is ion-exchange column purified and shipped in a 2D barcoded Matrix tube containing 10ug of transfection-ready, dried plasmid DNA (reconstitute with 100 ul of water).
Reconstitution Method:	<ol style="list-style-type: none">1. Centrifuge at 5,000xg for 5min.2. Carefully open the tube and add 100ul of sterile water to dissolve the DNA.3. Close the tube and incubate for 10 minutes at room temperature.4. Briefly vortex the tube and then do a quick spin (less than 5000xg) to concentrate the liquid at the bottom.5. Store the suspended plasmid at -20°C. The DNA is stable for at least one year from date of shipping when stored at -20°C.
RefSeq:	<u>NM_001024465.3</u>
RefSeq Size:	1035 bp
RefSeq ORF:	669 bp
Locus ID:	6648
UniProt ID:	<u>P04179</u>
Cytogenetics:	6q25.3
Protein Families:	Druggable Genome, Transcription Factors
Protein Pathways:	Huntington's disease
MW:	24.8 kDa
Gene Summary:	This gene is a member of the iron/manganese superoxide dismutase family. It encodes a mitochondrial protein that forms a homotetramer and binds one manganese ion per subunit. This protein binds to the superoxide byproducts of oxidative phosphorylation and converts them to hydrogen peroxide and diatomic oxygen. Mutations in this gene have been associated with idiopathic cardiomyopathy (IDC), premature aging, sporadic motor neuron disease, and cancer. Alternative splicing of this gene results in multiple transcript variants. A related pseudogene has been identified on chromosome 1. [provided by RefSeq, Apr 2016]

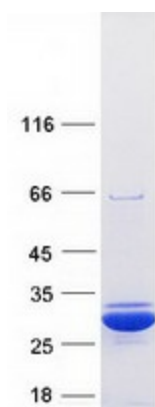
Product images:



Circular map for RC212924



Western blot validation of overexpression lysate (Cat# [LY422510]) using anti-DDK antibody (Cat# [TA50011-100]). Left: Cell lysates from untransfected HEK293T cells; Right: Cell lysates from HEK293T cells transfected with RC212924 using transfection reagent MegaTran 2.0 (Cat# [TT210002]).



Coomassie blue staining of purified SOD2 protein (Cat# [TP312924]). The protein was produced from HEK293T cells transfected with SOD2 cDNA clone (Cat# RC212924) using MegaTran 2.0 (Cat# [TT210002]).