

## Product datasheet for **RC212665**

### Estrogen Receptor beta (ESR2) (NM\_001040275) Human Tagged ORF Clone

#### Product data:

Product Type:	Expression Plasmids
Product Name:	Estrogen Receptor beta (ESR2) (NM_001040275) Human Tagged ORF Clone
Tag:	Myc-DDK
Symbol:	Estrogen Receptor beta
Synonyms:	ER-BETA; Erb; ESR-BETA; ESRB; ESTRB; NR3A2; ODG8
Mammalian Cell Selection:	Neomycin
Vector:	pCMV6-Entry (PS100001)
E. coli Selection:	Kanamycin (25 ug/mL)



[View online »](#)

**ORF Nucleotide Sequence:**

>RC212665 representing NM\_001040275  
 Red=Cloning site Blue=ORF Green=Tags(s)

TTTTGTAATACGACTCACTATAGGGCGGCCGGAATTCGTCGACTGGATCCGGTACCGAGGAGATCTGCC  
 GCC**CGGATCGCC**

ATGGATATAAAAACTCACCATCTAGCCTTAATTCCTCTCTCACTACAAGTGCAGTCAATCCATCTTAC  
 CCCTGGAGCACGCTCCATATACATACCTTCTCTATGTAGACAGCCACCATGAATATCCAGCCATGAC  
 ATTCTATAGCCCTGCTGTGATGAATTACAGCATTCCCAGCAATGCACTAACTTGGAAAGGTGGCCCTGGT  
 CGGCAGACCACAAGCCAAATGTGTTGTGGCCAACACCTGGGCACCTTTCTCTTTAGTGGTCCATCGCC  
 AGTTATCACATCTGTATGCGGAACCTCAAAGAGTCCCTGGTGTGAAGCAAGATCGCTAGAACACACCTT  
 ACCTGTAACAGAGAGACTGAAAAGGAAGGTTAGTGGGAACCGTTGCGCCAGCCCTGTTACTGGTCCA  
 GGTTCAAAGAGGGATGCTCACTTCTGCGCTGTCTGCAGCATTACGCATCGGGATACACTATGGAGTCT  
 GGTCTGTGAAGGATGTAAGGCCTTTTTAAAAGAAGCATTCAAGGACATAATGATTATATTTGTCAGC  
 TACAAATCAGTGTACAATCGATAAAAACCGGCGCAAGAGCTGCCAGGCCCTGCCGACTTCGGAAGTGTAC  
 GAAGTGGGAATGGTGAAGTGTGGCTCCCGAGAGAGAGATGTGGGTACCGCCTTGTGCGGAGACAGAGAA  
 GTGCCGACGAGCAGCTGCACTGTGCCGGAAGGCCAAGAGAAGTGGCGGCCACCGCCCGGAGTGGGGGA  
 GCTGCTGCTGGACGCCCTGAGCCCCGAGCAGCTAGTGCTCACCCCTCTGGAGGCTGAGCCGCCCATGTG  
 CTGATCAGCCGCCCAGTGCGCCCTTACCAGGCCTCCATGATGATGTCCTGACCAAGTTGGCCGACA  
 AGGAGTTGGTACACATGATCAGCTGGGCCAAGAAGATCCCGGCTTTGTGGAGCTCAGCCTGTTGACCA  
 AGTGGCGCTCTTGAGAGCTGTTGGATGGAGGTGTTAATGATGGGGCTGATGTGGCGTCAATTGACCAC  
 CCCGGCAAGCTCATCTTTGCTCCAGATCTGTTCTGGACAGGGATGAGGGGAAATGCGTAGAAGGAATTC  
 TGGAAATCTTTGACATGCTCTGCAACTACTTCAAGGTTTCGAGAGTTAAAACCAACACAAAAGATA  
 TCTCTGTGTCAAGGCCATGATCCTGCTCAATTCCAGTATGTACCCTCTGGTACAGCGACCCAGGATGCT  
 GACAGCAGCCGGAAGCTGGCTCACTTGCTGAACGCCGTGACCGATGCTTTGGTTTGGGTGATTGCCAAGA  
 GCGGCATCTCTCCAGCAGCAATCCATGCGCCTGGCTAACCTCCTGATGCTCCTGTCCACGTCAGGCA  
 TGCGAGGGCAGAAAAGCCTCTCAAACTCACCTCATTTGGAATGAAGATGGAGACTCTTTGCTGAA  
 GCAACGATGGAGCAG

**ACGGTACGGCGCGCTCGAGCAGAACTCATCTCAGAAGAGGATCTGGCAGCAATGATATCTGGATT**  
**ACAAGGATGACGACGATAAGGTTTAA**

**Protein Sequence:**

>RC212665 representing NM\_001040275  
 Red=Cloning site Green=Tags(s)

MDIKNSPSSLNSPSSYNCSQSILPLEHGSYIPSSYVDSHHEYPAMTFYSPAVMNYIPSNTNLEGGPG  
 RQTTSPNVLWPTPGHLSPLVVHRQLSHLYAEPQKSPWCEARSLEHTLPVNRETLKRKVSNGNRCASPVTGP  
 GSKRDAHFCAVCSYASGYHYGVWVWCEGCKAFFKRSIQGHNDYICPATNQCTIDKNRRKSCQACRLRKY  
 EVGMVKCGSRRCGYRLVRRQRSADQLHCAGKAKRSGGHAPRVRELLLDALSPEQLVLTLLAEPPHV  
 LISRPSAPFTEASMMMSLTKLADKELVHMSWAKKIPGFVELSLFDQVRLLESCWMEVLMMLMWRSIDH  
 PGKLI FAPDLVDRDEGKCVEGILEIFDMLLATTSRFRELKLQHEKLYCVKAMILLNSSMYPLVATQDA  
 DSSRKL AHL LNVAVDALVWVIAKSGISSQQSMRLANLLMLLSHVRHARA EKASQTLT SFGMKMETLLPE  
 ATMEQ

**TRTRPLEQKLI SEEDLAANDILDYKDDDDKV**

**Chromatograms:**

[https://cdn.origene.com/chromatograms/mg8004\\_b03.zip](https://cdn.origene.com/chromatograms/mg8004_b03.zip)

**Restriction Sites:**

SgfI-MluI

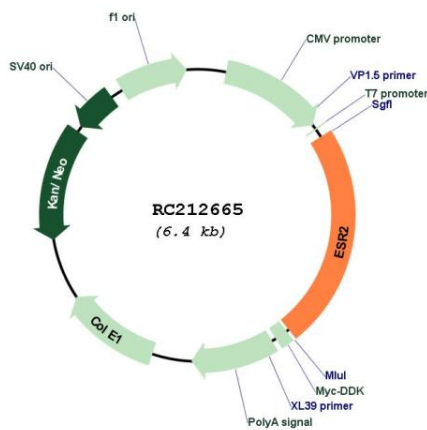


**Protein Families:** Druggable Genome, Nuclear Hormone Receptor, Transcription Factors

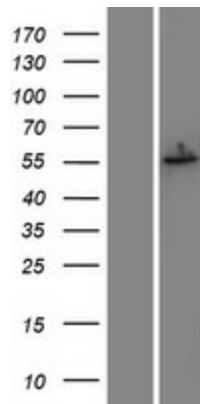
**MW:** 55.3 kDa

**Gene Summary:** This gene encodes a member of the family of estrogen receptors and superfamily of nuclear receptor transcription factors. The gene product contains an N-terminal DNA binding domain and C-terminal ligand binding domain and is localized to the nucleus, cytoplasm, and mitochondria. Upon binding to 17beta-estradiol or related ligands, the encoded protein forms homo- or hetero-dimers that interact with specific DNA sequences to activate transcription. Some isoforms dominantly inhibit the activity of other estrogen receptor family members. Several alternatively spliced transcript variants of this gene have been described, but the full-length nature of some of these variants has not been fully characterized. [provided by RefSeq, Jul 2008]

**Product images:**



Circular map for RC212665



Western blot validation of overexpression lysate (Cat# [LY421734]) using anti-DDK antibody (Cat# [TA50011-100]). Left: Cell lysates from untransfected HEK293T cells; Right: Cell lysates from HEK293T cells transfected with RC212665 using transfection reagent MegaTran 2.0 (Cat# [TT210002]).