

## Product datasheet for RC212661

### LLGL2 (NM\_001015002) Human Tagged ORF Clone

#### Product data:

Product Type:	Expression Plasmids
Product Name:	LLGL2 (NM_001015002) Human Tagged ORF Clone
Tag:	Myc-DDK
Symbol:	LLGL2
Synonyms:	HGL; Hugl-2; LGL2
Mammalian Cell Selection:	Neomycin
Vector:	pCMV6-Entry (PS100001)
E. coli Selection:	Kanamycin (25 ug/mL)
ORF Nucleotide Sequence:	>RC212661 representing NM_001015002 Red=Cloning site Blue=ORF Green=Tags(s)

TTTTGTAATACGACTCACTATAGGGCGGCCGGAATTCGTCGACTGGATCCGGTACCGAGGAGATCTGCC  
GCC**CGATCGCC**

ATGAGGCGGTTCTGAGGCCAGGGCATGACCCTGTGCGGGAGAGGCTCAAGCGGGACCTGTTCCAGTTTA  
ACAAGACGGTGGAGCATGGCTTCCCGCACCAGCCAGCGCCCTCGGCTACAGCCCGTCCCTGCGCATCCT  
GGCCATCGGCACCGTTCTGGAGCCATCAAGCTCTACGGAGCCCCAGGCGTGGAGTTCATGGGGCTGCAC  
CAGGAGAACAAACGCTGTGACGCAGATCCACCTCCTGCCCGCCAGTGCCAGCTGGTACCCTGCTGGATG  
ACAACAGCCTGCACCTTTGGAGCCTGAAGGTCAAGGGCGGGGCATCGGAGCTGCAGGAGGATGAGAGCTT  
CACACTGCGTGGACCCCAAGGGCTGCCCCAGTGCCACACAGATCACCGTGGTCCCTGCCACATTCCTCC  
TGCGAGCTGCTCTACCTGGCACCGAGAGTGGCAACGTGTTTGTGGTGCAGCTGCCAGCTTTTCGTGCGC  
TGGAGGACCGGACCATCAGCTCGGACGCGGTGCTGCAGCGGTTGCCAGAGGAGGCCCGCCACCGCGGTG  
GTTTCGAGATGGTGGAGGCACTGCAGGAGCACCTCGAGACCCCAACCAGATCCTGATCGGCTACAGCCGA  
GGCCTCGTTGTCATCTGGGACCTACAGGGCAGCCGCTGCTCTACCACTTCCTCAGCAGCCGCAACTGG  
AGAACATCTGGTGGCAGCGGGACGGCCGCTGCTCGTCACTGTCACTCTGACGGCAGCTACTGCCAGTG  
GCCCGTGTCCAGCGAAGCCAGCAACCAGAGCCCTCCGACGCTCGTGCCTTACGGTCCCTTTCCCTTGC  
AAAGCGATTACCAGAATCCTCTGGCTGACCACTAGGCAGGGGTTGCCCTTACCATCTTCCAGGGTGGCA  
TGCCACGGGCCAGCTACGGGGACCGCCACTGCATCTCAGTGATCCACGATGGCCAGCAGACGGCCCTCGA  
CTTCACCTCCCGTGCATCGGCTTCACTGTCTCACAGAGGCAGACCCTGCAGCCAGTAGGAGAGCTTCG  
GGAGTGGGTGCCAGGTT

**ACGCGT**ACGCGGCCGCTCGAGCAGAACTCATCTCAGAAGAGGATCTGGCAGCAAATGATATCCTGGATT  
ACAAGGATGACGACGATAAGGTTTAA



[View online »](#)

**Protein Sequence:** >RC212661 representing NM\_001015002  
Red=Cloning site Green=Tags(s)

MRRFLRPGHDPVRELRKRDLFQFNKTVEHGFPHQPSALGYSPSLRILAIIGTRSGAIKLYGAPGVFEMGLH  
 QENNAVTQIHLPLGQCQLVTLDDNSLHLWSLKVKGGASELQEDESFTLRGPPGAAPSATQITVVLPHSS  
 CELLYLGTESGNVFFVQLPAFRALEDRTISSDAVLQRLPEEARHRRVFEMVEALQEHPDPNQILIGYSR  
 GLVVIWDLQGSRLYHFLSSQQLENIWWQRDGRLLVSCHSDGYSYQWPVSEAQQPEPLRSLVPYGFPC  
 KAITRILWLTTTRQGLPFTIFQGGMPRASYGDRHCISVIHGDGQQTAFDFTSRVIGF TVL TEADPAASRRAS  
 VGAAQG

TRTRPLEQKLISEEDLAANDILDYKDDDDKV

**Chromatograms:** [https://cdn.origene.com/chromatograms/mk8054\\_b02.zip](https://cdn.origene.com/chromatograms/mk8054_b02.zip)

**Restriction Sites:** SgfI-MluI

**Cloning Scheme:**



**ACCN:** NM\_001015002

**ORF Size:** 1068 bp

**OTI Disclaimer:** The molecular sequence of this clone aligns with the gene accession number as a point of reference only. However, individual transcript sequences of the same gene can differ through naturally occurring variations (e.g. polymorphisms), each with its own valid existence. This clone is substantially in agreement with the reference, but a complete review of all prevailing variants is recommended prior to use. [More info](#)

**OTI Annotation:** This clone was engineered to express the complete ORF with an expression tag. Expression varies depending on the nature of the gene.

**Components:** The ORF clone is ion-exchange column purified and shipped in a 2D barcoded Matrix tube containing 10ug of transfection-ready, dried plasmid DNA (reconstitute with 100 ul of water).

**Reconstitution Method:**

1. Centrifuge at 5,000xg for 5min.
2. Carefully open the tube and add 100ul of sterile water to dissolve the DNA.
3. Close the tube and incubate for 10 minutes at room temperature.
4. Briefly vortex the tube and then do a quick spin (less than 5000xg) to concentrate the liquid at the bottom.
5. Store the suspended plasmid at -20°C. The DNA is stable for at least one year from date of shipping when stored at -20°C.

**RefSeq:** [NM\\_001015002.1](#), [NP\\_001015002.1](#)

**RefSeq Size:** 1440 bp

**RefSeq ORF:** 1071 bp

**Locus ID:** 3993

**UniProt ID:** [Q6P1M3](#)

**Cytogenetics:** 17q25.1

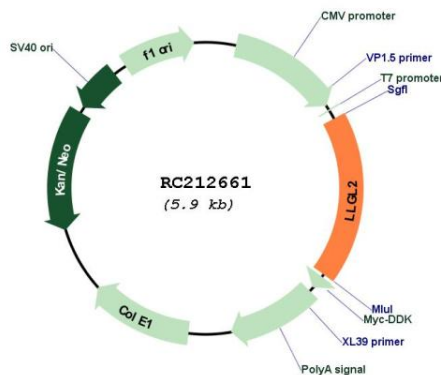
**Protein Families:** Druggable Genome

**Protein Pathways:** Tight junction

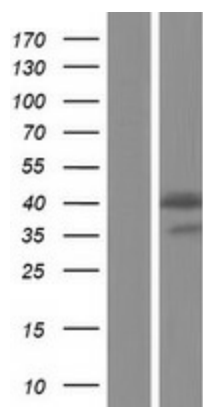
**MW:** 39.5 kDa

**Gene Summary:** The lethal (2) giant larvae protein of *Drosophila* plays a role in asymmetric cell division, epithelial cell polarity, and cell migration. This human gene encodes a protein similar to lethal (2) giant larvae of *Drosophila*. In fly, the protein's ability to localize cell fate determinants is regulated by the atypical protein kinase C (aPKC). In human, this protein interacts with aPKC-containing complexes and is cortically localized in mitotic cells. Alternative splicing results in multiple transcript variants encoding different isoforms. [provided by RefSeq, Jul 2008]

### Product images:



Circular map for RC212661



Western blot validation of overexpression lysate (Cat# [LY423111]) using anti-DDK antibody (Cat# [TA50011-100]). Left: Cell lysates from untransfected HEK293T cells; Right: Cell lysates from HEK293T cells transfected with RC212661 using transfection reagent MegaTran 2.0 (Cat# [TT210002]).