

## Product datasheet for RC212501L4

### ADAM12 (NM\_003474) Human Tagged Lenti ORF Clone

#### Product data:

Product Type:	Expression Plasmids
Product Name:	ADAM12 (NM_003474) Human Tagged Lenti ORF Clone
Tag:	mGFP
Symbol:	ADAM12
Synonyms:	ADAM12-OT1; CAR10; MCMP; MCMPMItna; MLTN; MLTNA
Mammalian Cell Selection:	Puromycin
Vector:	pLenti-C-mGFP-P2A-Puro (PS100093)
E. coli Selection:	Chloramphenicol (34 ug/mL)
ORF Nucleotide Sequence:	The ORF insert of this clone is exactly the same as(RC212501).
Restriction Sites:	SgfI-MluI
Cloning Scheme:	

Cloning sites used for ORF Shuttling:



\* The last codon before the Stop codon of the ORF.

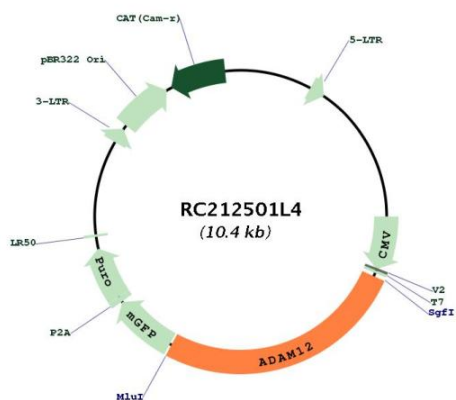
ACCN:	NM_003474
ORF Size:	2727 bp



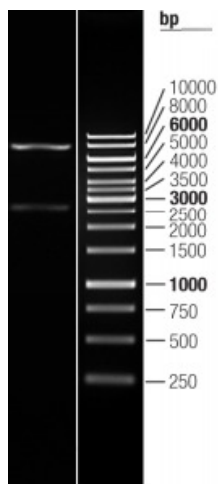
[View online »](#)

<b>OTI Disclaimer:</b>	The molecular sequence of this clone aligns with the gene accession number as a point of reference only. However, individual transcript sequences of the same gene can differ through naturally occurring variations (e.g. polymorphisms), each with its own valid existence. This clone is substantially in agreement with the reference, but a complete review of all prevailing variants is recommended prior to use. <a href="#">More info</a>
<b>OTI Annotation:</b>	This clone was engineered to express the complete ORF with an expression tag. Expression varies depending on the nature of the gene.
<b>Components:</b>	The ORF clone is ion-exchange column purified and shipped in a 2D barcoded Matrix tube containing 10ug of transfection-ready, dried plasmid DNA (reconstitute with 100 ul of water).
<b>Reconstitution Method:</b>	<ol style="list-style-type: none"><li>1. Centrifuge at 5,000xg for 5min.</li><li>2. Carefully open the tube and add 100ul of sterile water to dissolve the DNA.</li><li>3. Close the tube and incubate for 10 minutes at room temperature.</li><li>4. Briefly vortex the tube and then do a quick spin (less than 5000xg) to concentrate the liquid at the bottom.</li><li>5. Store the suspended plasmid at -20°C. The DNA is stable for at least one year from date of shipping when stored at -20°C.</li></ol>
<b>RefSeq:</b>	<a href="#">NM_003474.3</a> , <a href="#">NP_003465.3</a>
<b>RefSeq Size:</b>	5504 bp
<b>RefSeq ORF:</b>	2730 bp
<b>Locus ID:</b>	8038
<b>UniProt ID:</b>	<a href="#">O43184</a>
<b>Cytogenetics:</b>	10q26.2
<b>Domains:</b>	Reprolysin, DISIN, Pep_M12B_propep, ACR
<b>Protein Families:</b>	Druggable Genome, Protease, Secreted Protein, Transmembrane
<b>MW:</b>	99.54 kDa
<b>Gene Summary:</b>	This gene encodes a member of a family of proteins that are structurally related to snake venom disintegrins and have been implicated in a variety of biological processes involving cell-cell and cell-matrix interactions, including fertilization, muscle development, and neurogenesis. Expression of this gene has been used as a maternal serum marker for pre-natal development. Alternative splicing results in multiple transcript variants encoding different isoforms. Shorter isoforms are secreted, while longer isoforms are membrane-bound form. [provided by RefSeq, Jan 2014]

Product images:



Circular map for RC212501L4



Double digestion of RC212501L4 using SgfI and MluI