

## Product datasheet for **RC212484**

### **C2orf27 (C2orf27A) (NM\_013310) Human Tagged ORF Clone**

#### Product data:

**Product Type:** Expression Plasmids  
**Product Name:** C2orf27 (C2orf27A) (NM\_013310) Human Tagged ORF Clone  
**Tag:** Myc-DDK  
**Symbol:** C2orf27  
**Synonyms:** C2orf27; C2orf27B  
**Mammalian Cell Selection:** Neomycin  
**Vector:** pCMV6-Entry (PS100001)  
**E. coli Selection:** Kanamycin (25 ug/mL)  
**ORF Nucleotide Sequence:** >RC212484 representing NM\_013310  
 Red=Cloning site Blue=ORF Green=Tags(s)

TTTTGTAATACGACTCACTATAGGGCGCCGGGAATTCGTCGACTGGATCCGGTACCGAGGAGATCTGCC  
 GCC**CGATCGCC**

ATGACAGTCAAGTGGAAACAACCTGTCTGCTCCTGCTTCAGGTGCAGAAATACAGCGATTTCCAGTGCCAG  
 CTGTTGAGCCAGTGCCAGCACCAGGGGACAGATCCCTCCAGGGACAGCGCTGGAGCTAGAGGAAGCTCC  
 AGAGCCCTCTGCCGCTGCCCTGGGACTGCCAGGACCAGCCAGTGAGGAGCTGCCTGACTTCATGGCA  
 CCTCCTGTAGAGCCACCGCCTCAGCCCTGGAGCTGAAAGTGTGGCTGGAGCTAGAGGTGGCAGAGAGGG  
 GTGGCCAGCACAGCTCCAGCCAGCAGCTCCACACTGCTCCAGTCTGGGCACAGTGGAAAGCTATGGAG  
 GCAGAGACCAGGGTTTGCAATCTGGGCTCCTCTGCCTCACTGGAGAGGGACTTCTCTCATTACAGCAGAGC  
 AGCAGCCCTGCTGCTGAAGGGCCTGCTGCTACTGCTGCTGGGGCTGTTTGCCTGCCTGCAGGAGGTGCTG  
 GAGAGCAAGAAAAGGAGCCTGTGAGCAGGGGTTCCAGCAGGTCTCCTGCTCCAGAGGGCAGCTCCTCC  
 TCCAGGCATGGAGGTTTGCCTCAGCTGGGCATCTGGCCATTTGCCCC

**ACGCGT**ACGCGGGCCGCTCGAGCAGAAACTCATCTCAGAAGAGGATCTGGCAGCAATGATATCCTGGATT  
 ACAAGGATGACGACGATAAGGTTTAA

**Protein Sequence:** >RC212484 representing NM\_013310  
 Red=Cloning site Green=Tags(s)

MTVKWKQLSAPASGAEIQRFPVPAVEPVPAPGADSPPGTALALEEAEPEPSCRCPGTAQDQPSEELPDFMA  
 PPVEPPASALELKVWLELEVAERGGQHSSSQQLPHCSQSWAQWKLWRQRPGF AIWAPLPHWRGTS LIQQS  
 SSPAAEGPAATAAGAVCLPAGGAGEQEKEPVSRRGSSRSCSQRPPPPGMEVCPQLGIWAICP

**TRTRPLEQKLI**SEEDLAANDILDYKDDDDKV



[View online »](#)

**Chromatograms:** [https://cdn.origene.com/chromatograms/mk8023\\_d03.zip](https://cdn.origene.com/chromatograms/mk8023_d03.zip)

**Restriction Sites:** SgfI-MluI

**Cloning Scheme:**



**ACCN:** NM\_013310

**ORF Size:** 609 bp

**OTI Disclaimer:** The molecular sequence of this clone aligns with the gene accession number as a point of reference only. However, individual transcript sequences of the same gene can differ through naturally occurring variations (e.g. polymorphisms), each with its own valid existence. This clone is substantially in agreement with the reference, but a complete review of all prevailing variants is recommended prior to use. [More info](#)

**OTI Annotation:** This clone was engineered to express the complete ORF with an expression tag. Expression varies depending on the nature of the gene.

**Components:** The ORF clone is ion-exchange column purified and shipped in a 2D barcoded Matrix tube containing 10ug of transfection-ready, dried plasmid DNA (reconstitute with 100 ul of water).

**Reconstitution Method:**

1. Centrifuge at 5,000xg for 5min.
2. Carefully open the tube and add 100ul of sterile water to dissolve the DNA.
3. Close the tube and incubate for 10 minutes at room temperature.
4. Briefly vortex the tube and then do a quick spin (less than 5000xg) to concentrate the liquid at the bottom.
5. Store the suspended plasmid at -20°C. The DNA is stable for at least one year from date of shipping when stored at -20°C.

**RefSeq:** [NM\\_013310.5](#)

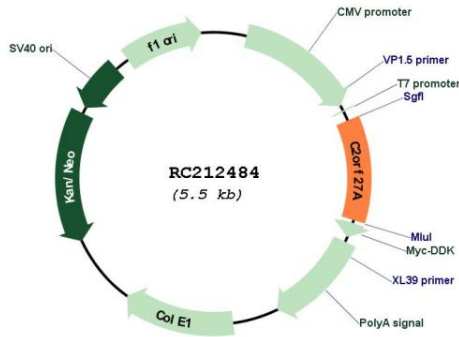
**RefSeq Size:** 1222 bp

**RefSeq ORF:** 612 bp

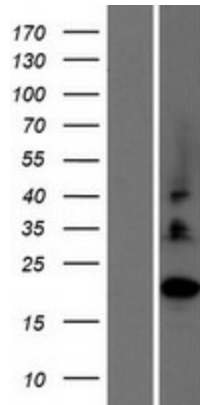
**Locus ID:** 29798

Cytogenetics: 2q21.2  
 MW: 21.3 kDa

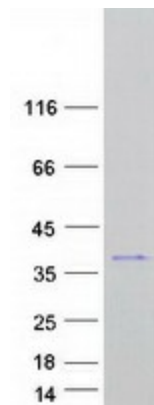
**Product images:**



Circular map for RC212484



Western blot validation of overexpression lysate (Cat# [LY415674]) using anti-DDK antibody (Cat# [TA50011-100]). Left: Cell lysates from untransfected HEK293T cells; Right: Cell lysates from HEK293T cells transfected with RC212484 using transfection reagent MegaTran 2.0 (Cat# [TT210002]).



Coomassie blue staining of purified C2orf27A protein (Cat# [TP312484]). The protein was produced from HEK293T cells transfected with C2orf27A cDNA clone (Cat# RC212484) using MegaTran 2.0 (Cat# [TT210002]).