

Product datasheet for RC212205

BIRC5 (NM_001012270) Human Tagged ORF Clone

Product data:

Product Type: Expression Plasmids
Product Name: BIRC5 (NM_001012270) Human Tagged ORF Clone
Tag: Myc-DDK
Symbol: BIRC5
Synonyms: API4; EPR-1
Mammalian Cell Selection: Neomycin
Vector: pCMV6-Entry (PS100001)
E. coli Selection: Kanamycin (25 ug/mL)
ORF Nucleotide Sequence: >RC212205 representing NM_001012270
 Red=Cloning site Blue=ORF Green=Tags(s)

TTTTGTAATACGACTCACTATAGGGCGGCCGGAATTCGTCGACTGGATCCGGTACCGAGGAGATCTGCC
 GCC**CGATCGCC**

ATGGGTGCCCCGACGTTGCCCTGCCTGGCAGCCCTTCTCAAGGACCACCGCATCTCTACATTCAAGA
 ACTGGCCCTTCTTGAGGGCTGCGCTGCACCCGGAGCGGATGGCCGAGGCTGGCTTCATCCACTGCC
 CACTGAGAACGAGCCAGACTGGCCAGTGTTCCTTCTGCTTCAAGGAGCTGGAAGGCTGGGAGCCAGAT
 GACGACCCATGCAAAGGAAACAATAAGAAGAAAGATTTGAGGAACTGCGGAGAAAGTGCGCCG
 TGCCATCGAGCAGCTGGCTGCCATGGATTGAGGCCTCTGGCCGGAGCTGCCTGGTCCAGAGTGGCTGCA
 CCACTCCAGGGTTTATCCCTGGTGCCACCAGCCTTCTGTGGGCCCTTAGCAATGTCT

ACGCGTACGCGGCCGCTCGAGCAGAACTCATCTCAGAAGAGGATCTGGCAGCAAATGATATCCTGGATT
 ACAAGGATGACGACGATAAGGTTTAA

Protein Sequence: >RC212205 representing NM_001012270
 Red=Cloning site Green=Tags(s)

MGAPTLPPAWQPFLKDHRI STFKNWPFLEGCACTPERMAEAGFIHCPTENEPDLAQCFFCFKELEGWEPD
 DDPMQRKPTIRRNLRKLRKCAVPSSSWLPWIEASGRSCLVPEWLHHFQGLFPGATSLPVGPLAMS

TRTRPLEQK**L**ISEEDLAANDILDYKDDDDKV

Chromatograms: https://cdn.origene.com/chromatograms/ja1442_g03.zip

Restriction Sites: SgfI-MluI



[View online »](#)

Cloning Scheme:


ACCN: NM_001012270

ORF Size: 411 bp

OTI Disclaimer: The molecular sequence of this clone aligns with the gene accession number as a point of reference only. However, individual transcript sequences of the same gene can differ through naturally occurring variations (e.g. polymorphisms), each with its own valid existence. This clone is substantially in agreement with the reference, but a complete review of all prevailing variants is recommended prior to use. [More info](#)

OTI Annotation: This clone was engineered to express the complete ORF with an expression tag. Expression varies depending on the nature of the gene.

Components: The ORF clone is ion-exchange column purified and shipped in a 2D barcoded Matrix tube containing 10ug of transfection-ready, dried plasmid DNA (reconstitute with 100 ul of water).

Reconstitution Method:

1. Centrifuge at 5,000xg for 5min.
2. Carefully open the tube and add 100ul of sterile water to dissolve the DNA.
3. Close the tube and incubate for 10 minutes at room temperature.
4. Briefly vortex the tube and then do a quick spin (less than 5000xg) to concentrate the liquid at the bottom.
5. Store the suspended plasmid at -20°C. The DNA is stable for at least one year from date of shipping when stored at -20°C.

RefSeq: [NM_001012270.2](#)

RefSeq Size: 2537 bp

RefSeq ORF: 414 bp

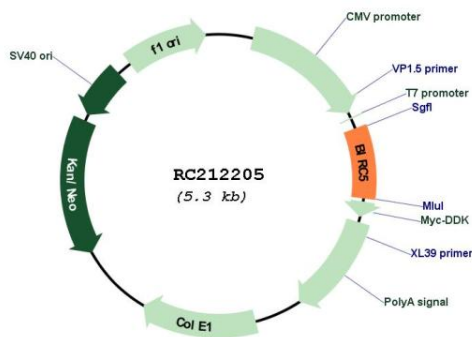
Locus ID: 332

UniProt ID: [O15392](#)

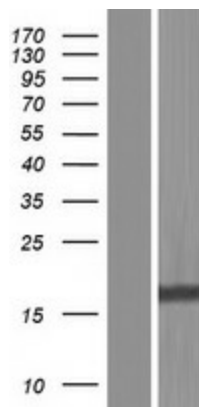
Cytogenetics: 17q25.3
Protein Families: Druggable Genome, Stem cell - Pluripotency
Protein Pathways: Colorectal cancer, Pathways in cancer
MW: 15.4 kDa

Gene Summary: This gene is a member of the inhibitor of apoptosis (IAP) gene family, which encode negative regulatory proteins that prevent apoptotic cell death. IAP family members usually contain multiple baculovirus IAP repeat (BIR) domains, but this gene encodes proteins with only a single BIR domain. The encoded proteins also lack a C-terminus RING finger domain. Gene expression is high during fetal development and in most tumors, yet low in adult tissues. Alternatively spliced transcript variants encoding distinct isoforms have been found for this gene. [provided by RefSeq, Jun 2011]

Product images:



Circular map for RC212205



Western blot validation of overexpression lysate (Cat# [LY423314]) using anti-DDK antibody (Cat# [TA50011-100]). Left: Cell lysates from untransfected HEK293T cells; Right: Cell lysates from HEK293T cells transfected with RC212205 using transfection reagent MegaTran 2.0 (Cat# [TT210002]).