

Product datasheet for RC212140

HRH2 (NM_022304) Human Tagged ORF Clone

Product data:

Product Type:	Expression Plasmids
Product Name:	HRH2 (NM_022304) Human Tagged ORF Clone
Tag:	Myc-DDK
Symbol:	HRH2
Synonyms:	H2R
Mammalian Cell Selection:	Neomycin
Vector:	pCMV6-Entry (PS100001)
E. coli Selection:	Kanamycin (25 ug/mL)
ORF Nucleotide Sequence:	>RC212140 representing NM_022304 Red=Cloning site Blue=ORF Green=Tags(s)

TTTTGTAATACGACTCACTATAGGGCGCCGGGAATTCGTCGACTGGATCCGGTACCGAGGAGATCTGCC
GCC**CGATCGC**C

ATGGCACCCAATGGCACAGCCTCTTCCTTTGCTGGACTCTACCGCATGCAAGATCACCATCACCGTGG
TCCTTGGCGTCTCATCCTCATACCGTTGCTGGCAATGTGGTCGTCTGTCTGGCCGTGGGCTTGAACCG
CCGGCTCCGCAACCTGACCAATTGTTTCATCGTGCCTGGCTATCACTGACCTGCTCCTCGGCCTCCTG
GTGCTGCCCTTCTGCCATCTACCAGCTGTCTGCAAGTGGAGCTTTGGCAAGGCTTCTGCAATATCT
ACACCAGCCTGGATGTGATGCTCTGCACAGCCTCCATTCTAACCTTTCATGATCAGCCTCGACCGGTA
CTGCGCTGTATGGACCACTGCGGTACCTGTGCTGGTACCCAGTTCGGGTGCGCATCTCTCTGGTC
TTAATTTGGGTCTCTCCATTACCTGTCTTTCTGTCTATCCACCTGGGGTGAACAGCAGGAACGAGA
CCAGCAAGGGCAATCATACCACCTTAAGTGCAAAGTCCAGGTCAATGAAGTGTACGGGCTGGTGGATGG
GCTGGTACCTTCTACCTCCCGTACTGATCATGTGCATCACCTACTACCGCATCTTCAAGGTGCGCCGG
GATCAGGCCAAGAGGATCAATCACATTAGCTCCTGGAAGGCAGCCACCATCAGGGAGCACAAGCCACAG
TGACACTGGCCGCCGTATGGGGCCTTCATCATCTGCTGGTTTCCCTACTTCACCGCTTTGTGTACCG
TGGGCTGAGAGGGGATGATGCCATCAATGAGGTGTTAGAAGCCATCGTTCTGTGGCTGGGCTATGCCAAC
TCAGCCCTGAACCCATCCTGTATGCTGGCTGAACAGAGACTCCGCACCGGGTACCAACAGCTCTTCT
GCTGCAGGCTGGCAACCGCAACTCCACAAAACCTTCTCTGAGGTCCAACGCCTCTCAGCTGTCCAGGAC
CCAAAGCCGAGAACCAGGCAACAGGAAGAAAACCCCTGAAGCTCCAGGTGTGGAGTGGGACAGAAGTC
ACGGCCCCCAGGGAGCCACAGACAGG

ACGCGTACGCGGCCGCTCGAGCAGAAAACCTCATCTCAGAAGAGGATCTGGCAGCAAATGATATCCTGGATT
ACAAGGATGACGACGATAAGGTTTAA



[View online »](#)

Protein Sequence: >RC212140 representing NM_022304
Red=Cloning site Green=Tags(s)

MAPNGTASSFCLDSTACKITITVVLAVLILITVAGNVVCLAVGLNRRLRNLNCFIVSLAITDLLLGLL
 VLPFSAIYQLSCKWSFGKVFNCNIYTSLDVMLCTASILNLFMISLDRYCAVMDPLRYPVLVTPVVAISLV
 LIWVISITLSFLSIHLGWNSRNETSKGNHTTSKCKVQVNEVYGLVDGLVTFYLPPLLIMCITYRIFKVAR
 DQAKRINHISSWKAATIREHKATVTLLAAVMGAFIICWFPPYFTAFVYRGLRGDDAINEVLEAIVLWLGYAN
 SALNPILYAALNRDFRTGYQLFCCLANRNSHKTSLRSNASQLSRTQSREPRQEEKPLKLQVWSGTEV
 TAPQGATDR

TRTRPLEQKLISEEDLAANDILDYKDDDDKV

Chromatograms: https://cdn.origene.com/chromatograms/mk6501_a01.zip

Restriction Sites: SgfI-MluI

Cloning Scheme:



ACCN: NM_022304

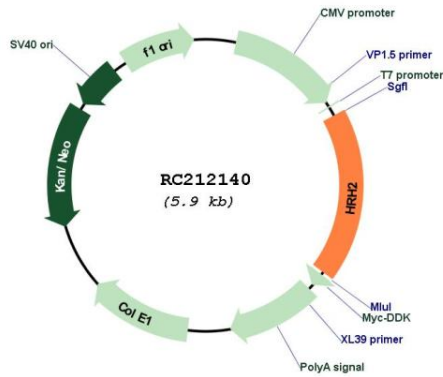
ORF Size: 1077 bp

OTI Disclaimer: Due to the inherent nature of this plasmid, standard methods to replicate additional amounts of DNA in E. coli are highly likely to result in mutations and/or rearrangements. Therefore, OriGene does not guarantee the capability to replicate this plasmid DNA. Additional amounts of DNA can be purchased from OriGene with batch-specific, full-sequence verification at a reduced cost. Please contact our customer care team at custsupport@origene.com or by calling 301.340.3188 option 3 for pricing and delivery.

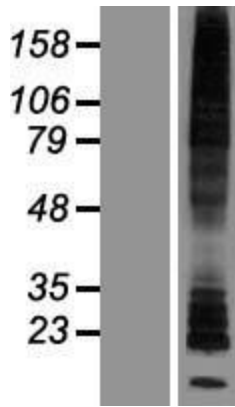
The molecular sequence of this clone aligns with the gene accession number as a point of reference only. However, individual transcript sequences of the same gene can differ through naturally occurring variations (e.g. polymorphisms), each with its own valid existence. This clone is substantially in agreement with the reference, but a complete review of all prevailing variants is recommended prior to use. [More info](#)

OTI Annotation:	This clone was engineered to express the complete ORF with an expression tag. Expression varies depending on the nature of the gene.
Components:	The ORF clone is ion-exchange column purified and shipped in a 2D barcoded Matrix tube containing 10ug of transfection-ready, dried plasmid DNA (reconstitute with 100 ul of water).
Reconstitution Method:	<ol style="list-style-type: none">1. Centrifuge at 5,000xg for 5min.2. Carefully open the tube and add 100ul of sterile water to dissolve the DNA.3. Close the tube and incubate for 10 minutes at room temperature.4. Briefly vortex the tube and then do a quick spin (less than 5000xg) to concentrate the liquid at the bottom.5. Store the suspended plasmid at -20°C. The DNA is stable for at least one year from date of shipping when stored at -20°C.
RefSeq:	NM_022304.2
RefSeq Size:	1847 bp
RefSeq ORF:	1080 bp
Locus ID:	3274
UniProt ID:	P25021
Cytogenetics:	5q35.2
Domains:	7tm_1
Protein Families:	Druggable Genome, GPCR, Transmembrane
Protein Pathways:	Calcium signaling pathway, Neuroactive ligand-receptor interaction
MW:	39.9 kDa
Gene Summary:	Histamine is a ubiquitous messenger molecule released from mast cells, enterochromaffin-like cells, and neurons. Its various actions are mediated by histamine receptors H1, H2, H3 and H4. Histamine receptor H2 belongs to the family 1 of G protein-coupled receptors. It is an integral membrane protein and stimulates gastric acid secretion. It also regulates gastrointestinal motility and intestinal secretion and is thought to be involved in regulating cell growth and differentiation. Alternatively spliced transcript variants encoding different isoforms have been found for this gene. [provided by RefSeq, Aug 2008]

Product images:



Circular map for RC212140



Western blot validation of overexpression lysate (Cat# [LY411729]) using anti-DDK antibody (Cat# [TA50011-100]). Left: Cell lysates from untransfected HEK293T cells; Right: Cell lysates from HEK293T cells transfected with RC212140 using transfection reagent MegaTran 2.0 (Cat# [TT210002]).