

Product datasheet for **RC212043**

CD32B (FCGR2B) (NM_001002274) Human Tagged ORF Clone

Product data:

Product Type:	Expression Plasmids
Product Name:	CD32B (FCGR2B) (NM_001002274) Human Tagged ORF Clone
Tag:	Myc-DDK
Symbol:	CD32B
Synonyms:	CD32; CD32B; FCG2; FCGR2; FCGR2C; FcRII-c; IGFR2
Mammalian Cell Selection:	Neomycin
Vector:	pCMV6-Entry (PS100001)
E. coli Selection:	Kanamycin (25 ug/mL)
ORF Nucleotide Sequence:	>RC212043 representing NM_001002274 Red=Cloning site Blue=ORF Green=Tags(s)

TTTTGTAATACGACTCACTATAGGGCGCCGGGAATTCGTCGACTGGATCCGGTACCGAGGAGATCTGCC
GCC**CGGATCGCC**

ATGGGAATCCTGTCACTTACCTGTCTTCCACTGAGAGTGACTGGGCTGACTGCAAGTCCCCCAGC
CTTGGGGTCATATGCTTCTGTGGACAGCTGTGCTATTCTGGCTCCTGTTGCTGGGACACCTGCAGCTCC
CCCAAAGGCTGTGCTGAAACTCGAGCCCCAGTGGATCAACGTGCTCCAGGAGGACTCTGTGACTTGACA
TGCCGGGGGACTCACAGCCCTGAGAGCGACTCCATTCAAGTGGTCCACAATGGGAATCTCATTCCCACCC
ACACGCAGCCAGCTACAGGTTCAAGGCCAACAACAATGACAGCGGGGAGTACACGTGCCAGACTGGCCA
GACCAGCCTCAGCGACCCTGTGCATCTGACTGTGCTTTCTGAGTGGCTGGTGTCCAGACCCTCACCTG
GAGTTCAGGAGGGAGAAACCATCGTGCTGAGGTGCCACAGCTGGAAGGACAAGCCTCTGGTCAAGGTCA
CATTCTCCAGAAATGAAAATCCAAGAAATTTCCCGTTCGGATCCCAACTTCTCCATCCCAAGCAAA
CCACAGTCACAGTGGTGATTACCACTGCACAGGAAACATAGGCTACACGCTGACTCATCCAAGCCTGTG
ACCATCACTGTCCAAGCTCCCAGCTCTTACCAGTGGGGATCATTGTGGCTGTGGTCACTGGGATTGCTG
TAGCGGCCATTGTTGCTGCTGTAGTGGCCTTGATCTACTGCAGGAAAAAGCGGATTTAGCCAATCCCAC
TAATCTGATGAGGCTGACAAAGTTGGGGCTGAGAACACAATCACCTATTCATTCTCATGCACCCGGAT
GCTCTGGAAGAGCCTGATGACCAGAACCGTATT

ACGCGTACGCGGCCGCTCGAGCAGAAACTCATCTCAGAAGAGGATCTGGCAGCAAATGATATCCTGGATT
ACAAGGATGACGACGATAAGGTTTAA



[View online »](#)

Protein Sequence: >RC212043 representing NM_001002274
Red=Cloning site Green=Tags(s)

MGILSFLPVLATESDWADCKSPQPWGHMLLWTAVLFLAPVAGTPAAPPKAVLKLEPQWINVLQEDSVTLT
 CRGTHSPESDSIQWFHNGNLIPHTHTQPSYRFKANNNDSGEYTCQTGQTSLSDPVHLTVLSEWLVLQTPHL
 EFQEGETIVLRCHSWKDKPLVKVTFVFQNGKSKKFSRSDPNFSIPQANHSHSGDYHCTGNIGYTLYSSKPV
 TITVQAPSSSPMGIIVAVVTGIAVAAIVAAVVALIYCRKKRISANPTNPDEADKVGAEINTITYSLLMHPD
 ALEEPDDQNRI

TRTRPLEQKLISEEDLAANDILDYKDDDDKV

Chromatograms: https://cdn.origene.com/chromatograms/mk8049_h08.zip

Restriction Sites: SgfI-MluI

Cloning Scheme:



ACCN: NM_001002274

ORF Size: 873 bp

OTI Disclaimer: The molecular sequence of this clone aligns with the gene accession number as a point of reference only. However, individual transcript sequences of the same gene can differ through naturally occurring variations (e.g. polymorphisms), each with its own valid existence. This clone is substantially in agreement with the reference, but a complete review of all prevailing variants is recommended prior to use. [More info](#)

OTI Annotation: This clone was engineered to express the complete ORF with an expression tag. Expression varies depending on the nature of the gene.

Components: The ORF clone is ion-exchange column purified and shipped in a 2D barcoded Matrix tube containing 10ug of transfection-ready, dried plasmid DNA (reconstitute with 100 ul of water).

Reconstitution Method:

1. Centrifuge at 5,000xg for 5min.
2. Carefully open the tube and add 100ul of sterile water to dissolve the DNA.
3. Close the tube and incubate for 10 minutes at room temperature.
4. Briefly vortex the tube and then do a quick spin (less than 5000xg) to concentrate the liquid at the bottom.
5. Store the suspended plasmid at -20°C. The DNA is stable for at least one year from date of shipping when stored at -20°C.

RefSeq: [NM_001002274.2](#), [NP_001002274.1](#)

RefSeq Size: 1576 bp

RefSeq ORF: 876 bp

Locus ID: 2213

UniProt ID: [P31994](#)

Cytogenetics: 1q23.3

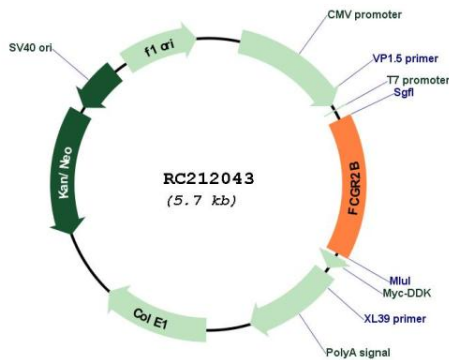
Protein Families: ES Cell Differentiation/IPS, Transmembrane

Protein Pathways: B cell receptor signaling pathway, Fc gamma R-mediated phagocytosis, Systemic lupus erythematosus

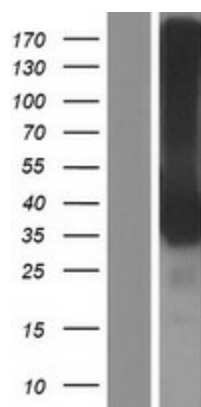
MW: 31.8 kDa

Gene Summary: The protein encoded by this gene is a low affinity receptor for the Fc region of immunoglobulin gamma complexes. The encoded protein is involved in the phagocytosis of immune complexes and in the regulation of antibody production by B-cells. Variations in this gene may increase susceptibility to systemic lupus erythematosus (SLE). Several transcript variants encoding different isoforms have been found for this gene. [provided by RefSeq, Jun 2010]

Product images:



Circular map for RC212043



Western blot validation of overexpression lysate (Cat# [LY424201]) using anti-DDK antibody (Cat# [TA50011-100]). Left: Cell lysates from untransfected HEK293T cells; Right: Cell lysates from HEK293T cells transfected with RC212043 using transfection reagent MegaTran 2.0 (Cat# [TT210002]).