

Product datasheet for RC211968

SIT (SIT1) (NM_014450) Human Tagged ORF Clone

Product data:

Product Type: Expression Plasmids
Product Name: SIT (SIT1) (NM_014450) Human Tagged ORF Clone
Tag: Myc-DDK
Symbol: SIT
Synonyms: SIT; SIT-R
Mammalian Cell Selection: Neomycin
Vector: pCMV6-Entry (PS100001)
E. coli Selection: Kanamycin (25 ug/mL)
ORF Nucleotide Sequence: >RC211968 ORF sequence
Red=Cloning site Blue=ORF Green=Tags(s)

TTTTGTAATACGACTCACTATAGGGCGCCGGGAATTCGTCGACTGGATCCGGTACCGAGGAGATCTGCC
GCC**CGATCGCC**

ATGAACCAAGGCTGACCCTCGGCTCAGAGCAGTGTGCTTGTGGACTCTCACATCTGCAGCCATGAGCAGAG
GCGACAACGCACGGATCTACTCGCACTGGGAATCCCCTCATAACCCAGGCCTGGGGACTGTGGGTCT
CTTAGGGCTGTGACGCTGCTATTTCTCATCTCGCTGGCTGCACACTGTCCCAGTGGACCAGGGCCGG
AGCAGGAGCCATCCGGGGCAGGGACGCTCTGGAGAGTCTGTGGAAGAGGTCCCGTGTATGGAACTGC
ATTATCTACAGACAGGACGGCTGTCTCAAGACCCAGAGCCAGACCAGCAGGATCCAACCTCTGGAGGCC
TGCCAGGGCTGCAGAGGAGGTGATGTGCTATACCAAGCCTGCAGCTGCGGCCTCCTCAGGGTCGGATCCCC
GGTCTTGGAAACCCCGTCAAGTACTCGGAGGTGGTGTGGACTCTGAGCCAAAGTCCCAGGCCTCGGGCC
CCGAGCCGGAGCTCTATGCCTCAGTATGTGCCAGACCCGAGGGCCCGGCCTCCTTCCCGGATCAGGC
CTATGCCAACAGCCAGCCTGCAGCCAGC

ACGCGTACGCGGCCGCTCGAGCAGAACTCATCTCAGAAGAGGATCTGGCAGCAATGATATCCTGGATT
ACAAGGATGACGACGATAAGGTTTAA

Protein Sequence: >RC211968 protein sequence
Red=Cloning site Green=Tags(s)

MNQADPRLRAVCLWLTSAAMSRGDNCTDLLALGIPSITQAWLWVLLGAVTLLFLISLAAHLQWTRGR
SRSHPGQGRSGESVVEVPLYGNLHYLQTGRLSQDPEPDQDPTLGGPARAAEEVMCYTSLQLRPPQGRIP
GPGTPVKYSEVLDSEPKSQASGPEPELYASVCAQTRRARASFPDQAYANSQPAAS

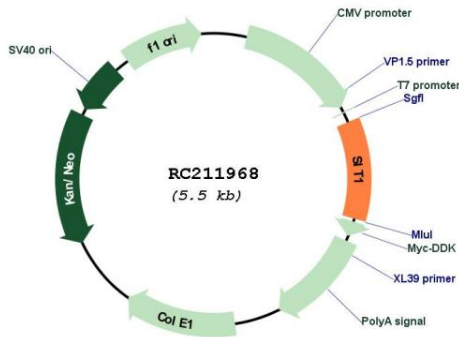
TRTRPLEQKLISEEDLAANDILDYKDDDDKV



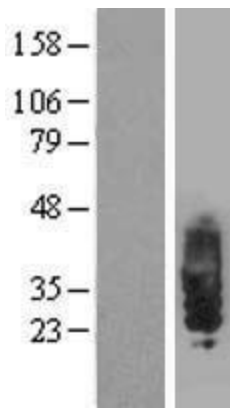
[View online »](#)

UniProt ID: [Q9Y3P8](#)
 Cytogenetics: 9p13.3
 Protein Families: Transmembrane
 MW: 21.1 kDa
 Gene Summary: Negatively regulates TCR (T-cell antigen receptor)-mediated signaling in T-cells. Involved in positive selection of T-cells.[UniProtKB/Swiss-Prot Function]

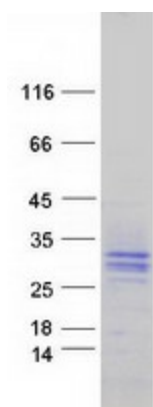
Product images:



Circular map for RC211968



Western blot validation of overexpression lysate (Cat# [LY415274]) using anti-DDK antibody (Cat# [TA50011-100]). Left: Cell lysates from untransfected HEK293T cells; Right: Cell lysates from HEK293T cells transfected with RC211968 using transfection reagent MegaTran 2.0 (Cat# [TT210002]).



Coomassie blue staining of purified SIT1 protein (Cat# [TP311968]). The protein was produced from HEK293T cells transfected with SIT1 cDNA clone (Cat# RC211968) using MegaTran 2.0 (Cat# [TT210002]).