

## Product datasheet for **RC211844**

### SIX5 (NM\_175875) Human Tagged ORF Clone

#### Product data:

Product Type:	Expression Plasmids
Product Name:	SIX5 (NM_175875) Human Tagged ORF Clone
Tag:	Myc-DDK
Symbol:	SIX5
Synonyms:	BOR2; DMAHP
Mammalian Cell Selection:	Neomycin
Vector:	pCMV6-Entry (PS100001)
E. coli Selection:	Kanamycin (25 ug/mL)



[View online »](#)

**ORF Nucleotide  
Sequence:**

>RC211844 representing NM\_175875  
 Red=Cloning site Blue=ORF Green=Tags(s)

TTTTGTAATACGACTCACTATAGGGCGGCCGGGAATTCGTCGACTGGATCCGGTACCGAGGAGATCTGCC  
 GCC**CGCATCGCC**

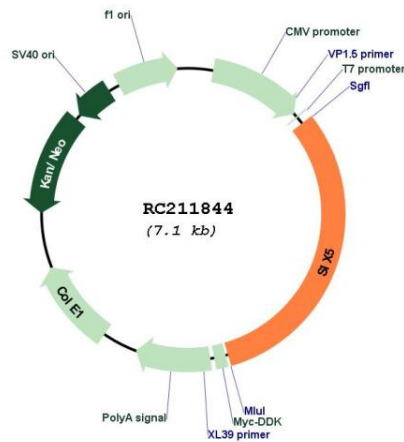
ATGGCTACCTTGCTGCGGAGCCGAGCGCGGGCCGGCGGCTGGGGGGAGGCGGTGGCGCGCGCGCGG  
 CGACCGAAGAGGAGGAGGAGGAAGCGCGCCAGCTCTTGCAGACTTTGCAGCGGCCGAGGGTGAGGCGGC  
 GCGCGCGGCCGGGGCCGGGGCGGGCGCAGCGGCTGCGGGAGCTGAGGGCCCGGGATCCCCGGGCGTCCCC  
 GGGTCGCCCCCGAGGCCGTTCCGAACCGCCACGGGCTCCGTTCTCGCCGAGCAGGTGGCGTGCG  
 TCTGCGAGGCGTGTCCAGGCGGGCCACCGCGCGCTTGAGCCGTTCTGGGCGCACTGCCCGCGC  
 CGAGCGCTACGTGGCAGCGACCCGGTGTTCGCGCGCGGGCCCTGGTGGCTTCCAGCGGGGCGAGTAC  
 GCCGAGCTCTACCGCTACTCGAGAGCCGCCCTTCCCCGCCGCCACCACGCTTCTGCAGGACCTCT  
 ACCTGCGCGCGCTACCATGAGGCCGAGCGGGCCCGCGCCGCGCGCTTGGCGCAGTGGACAAGTATCG  
 ACTGCGCAAGAAGTTCCCGCTGCCAAGACCATCTGGGACGGCGAGGAGACAGTCTACTGCTTCAAGGAG  
 CGCTCCCGCGCAGCGCTCAAGGCCTGCTACCGCGCAACCCTACCCACGCCGAGGAGAGCGCCGCC  
 TGGCCACACTCACCGGCTGTGCTCACGCAGGTGAGCAACTGGTTCAAGAACCGGCGACAGCGCGACCG  
 GACCGGGCCGGAGGCGCGCGCCCTGCAAGAGCGAGTCTGATGGGAATCCCACGACTGAGGACGAGTCC  
 AGCCGAAGTCTGAGGACCTGGAGAGAGGGGCGGCCAGTGTCCGCCGAGGCGCGTCCACAGGGCTCCA  
 TATTCCTGGCAGGGACCGGCCCTCCCGCGCTTGGCCGGCTTCTCTCCATCCTGGTGAACGGGAGCTT  
 CCTGGCAGCCAGCGGCTCCCCAGCAGTGTCTCAACGGGGGCCCGTCATCATCAACGGCTGGCCCTG  
 GCGAGGCTCCAGCCTGGGCGCGCTGTGCTACTGGGGCGGGGTGCCCTCCACCGCAGCCAGCC  
 CTCAGGGGGCCAGCGAGACCAAGACCTCTGTGCTCTGGACCTCAGACAGGGGAGGTGCGGCTGGAGGA  
 GGCTCAGTCGGAGGCCCTGAGACCAAAGGGGCCAGGTGGCTGCTCCGGGACCAGCCCTTGGAGAGGAG  
 GTCTGGGGCCCTGGCCCAAGTGGTGCCTGGCCCCCGACGGTGCACCTTCTCTGCCCGGGGCG  
 CAGTGCCTGCTGTGGTGCCTGCCCCACAAGTGGTACCCTCTCCCCACCCCGGGGTATCCCACGGGCTGAG  
 CCCCACCTCCCCTATTGAACCTGCCCCAGGTAGTACCCACCTCACAGGTGGTACCCTGCCCCAGGCT  
 GTGGGGCCCTGCAGCTGTTGGCAGCGGGCCAGGCGCCCTGTGAAGGTGGCAGCTGCAGCAGGCGCTG  
 CCAATGTGCACCTCATCAACTCCGGGTGGGCGTACTGCCCTGCAGTGCCTTCGGCCACTGCCCCAGG  
 AAATTCCTCCTGGCCAACCCTGTGTCTGGCAGCCCCATCGTGACGGGTGTGGCCGTGCAGCAGGGCAAG  
 ATCATCTCACCGCCACCTTCCCACCAGCATGCTCGTCTCCAGGTCTGCCGCCAGCCCCGGCCTGG  
 CCTGCCACTGAAGCCAGAGACGCCATCTCCGTGCTGAGGGAGGCCTCCCGGTGGCCCCAGCCCTGC  
 TCTCCCAGAGGCTCACGCCCTAGGCACCTTTCTGCACAGCAGCCACCCCGCGCGTGCACACCCTCC  
 AGCACCAGCCTGTCTTCTCCCCTGACTCCCCTGGCCTCTGCCCAACTTCCCGGCGCCCCACCAGAGG  
 GGCTGATGTTGTACCCGCGGCCGTGCCTGTCTGGTACAGGGCTGGAATAAGCGCAGGAACAGAGGG  
 GCTGCTGGAAGCGGAAAAGGGGCTGGGGACACAGGCCCCACACCGTGTGAGGCTGCCAGACCCCGAC  
 CCTGAGGGGCTGCTCTGGGGCCACCGCAGGGGTGAGGTTGACGAGGGGTTGGAAGCTGAGGCCAAGG  
 TTCTGACCCAGCTCCAGTCGGTGCCTGTGGAGGAGCCCTTGGAACTG

**ACGCGT**ACGCGGCCGCTCGAGCAGAACTCATCTCAGAAGAGGATCTGGCAGCAAATGATATCCTGGATT  
 ACAAGGATGACGACGATAAGGTTTAA

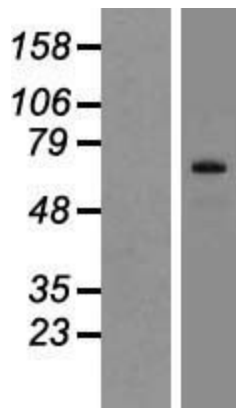


<b>Components:</b>	The ORF clone is ion-exchange column purified and shipped in a 2D barcoded Matrix tube containing 10ug of transfection-ready, dried plasmid DNA (reconstitute with 100 ul of water).
<b>Reconstitution Method:</b>	<ol style="list-style-type: none"> <li>1. Centrifuge at 5,000xg for 5min.</li> <li>2. Carefully open the tube and add 100ul of sterile water to dissolve the DNA.</li> <li>3. Close the tube and incubate for 10 minutes at room temperature.</li> <li>4. Briefly vortex the tube and then do a quick spin (less than 5000xg) to concentrate the liquid at the bottom.</li> <li>5. Store the suspended plasmid at -20°C. The DNA is stable for at least one year from date of shipping when stored at -20°C.</li> </ol>
<b>RefSeq:</b>	<u><a href="#">NM_175875.5</a></u>
<b>RefSeq Size:</b>	3145 bp
<b>RefSeq ORF:</b>	2220 bp
<b>Locus ID:</b>	147912
<b>UniProt ID:</b>	<u><a href="#">Q8N196</a></u>
<b>Cytogenetics:</b>	19q13.32
<b>Protein Families:</b>	Transcription Factors
<b>MW:</b>	74.4 kDa
<b>Gene Summary:</b>	The protein encoded by this gene is a homeodomain-containing transcription factor that appears to function in the regulation of organogenesis. This gene is located downstream of the dystrophia myotonia-protein kinase gene. Mutations in this gene are a cause of branchiootorenal syndrome type 2. [provided by RefSeq, Jul 2009]

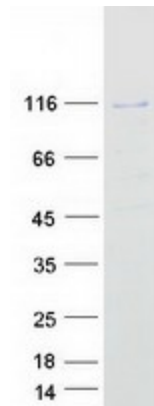
**Product images:**



Circular map for RC211844



Western blot validation of overexpression lysate (Cat# [LY406194]) using anti-DDK antibody (Cat# [TA50011-100]). Left: Cell lysates from untransfected HEK293T cells; Right: Cell lysates from HEK293T cells transfected with RC211844 using transfection reagent MegaTran 2.0 (Cat# [TT210002]).



Coomassie blue staining of purified SIX5 protein (Cat# [TP311844]). The protein was produced from HEK293T cells transfected with SIX5 cDNA clone (Cat# RC211844) using MegaTran 2.0 (Cat# [TT210002]).