

Product datasheet for RC211766

Collagen III (COL3A1) (NM_000090) Human Tagged ORF Clone

Product data:

Product Type:	Expression Plasmids
Product Name:	Collagen III (COL3A1) (NM_000090) Human Tagged ORF Clone
Tag:	Myc-DDK
Symbol:	Collagen III
Synonyms:	EDS4A; EDSVASC; PMGEDSV
Mammalian Cell Selection:	Neomycin
Vector:	pCMV6-Entry (PS100001)
E. coli Selection:	Kanamycin (25 ug/mL)
ORF Nucleotide Sequence:	>RC211766 representing NM_000090. Blue=ORF Red=Cloning site Green=Tag(s)

```
GCTCGTTTGTAGTAACCGTCAGAATTTGTAAACGACTCACTATAGGGCGCCGGGAATTCGTCGACTG
GATCCGGTACCGAGGAGATCTGCCGCCGCGATCGCC
ATGATGAGCTTTGTGCAAAAGGGGAGCTGGCTACTTCTCGCTCTGCTTCATCCCCTATTATTTGGCA
CAACAGGAAGCTGTTGAAGGAGGATGTTCCCATCTTGGTCAGTCTATGCGGATAGAGATGTCTGGAAG
CCAGAACCATGCCAAATATGTGTCTGTGACTCAGGATCCGTTCTCTGCGATGACATAATATGTGACGAT
CAAGAATTAGACTGCCCAACCCAGAAATTCATTTGGAGAATGTTGTGCAGTTTGCCACAGCCTCCA
ACTGCTCTACTCGCCCTCCTAATGGTCAAGGACCTCAAGGCCCAAGGGAGATCCAGGCCCTCCTGGT
ATTCTGGGAGAAATGGTGACCCTGGTATTCCAGGACAACCAGGGTCCCCTGGTTCTCTGGCCCCCT
GGAATCTGTGAATCATGCCCTACTGGTCCCTCAGAACTATTCTCCCAGTATGATTATATGATGTCAG
TCTGGAGTAGCAGTAGGAGGACTCGCAGGCTATCCTGGACCAGCTGGCCCCCAGGCCCTCCCGTCCC
CCTGGTACATCTGGTATCCTGGTTCCCTGGATCTCCAGGATACCAAGGACCCCTGGTGAACCTGGG
CAAGCTGGTCTTCAGGCCCTCCAGGACCTCCTGGTGCTATAGGTCCATCTGGTCTGCTGGAAAAGAT
GGAGAATCAGGTAGACCCGACGACCTGGAGAGCGAGGATTGCCTGGACCTCCAGGTATCAAAGGTCCA
GCTGGGATACCTGGATTCCTGGTATGAAAGGACACAGAGGCTTCGATGGACGAAATGGAGAAAAGGT
GAAACAGGTGCTCCTGGATTAAGGGTGAATGGTCTTCCAGGCGAAAATGGAGCTCCTGGACCCATG
GGTCCAAGAGGGGCTCCTGGTGAGCGAGGACGGCCAGGACTTCTGGGGCTGCAGGTGCTCGGGGTAAT
GACGGTGCTCGAGGCAGTGATGGTCAACCAGGCCCTCCTGGTCCCTGGAAGTGCAGGATTCCTGGA
TCCCCTGGTGCTAAGGGTGAAGTTGGACCTGCAGGGTCTCCTGGTTCAAATGGTGCCCTGGACAAAGA
GGAGAACCTGGACCTCAGGGACACGCTGGTGCTCAAGGTCTCCTGGCCCTCCTGGGATTAATGGTAGT
CCTGGTGGTAAAGGCGAAATGGGTCCTGGCTGGCATTCTGGAGCTCCTGGACTGATGGGAGCCCGGGT
CCTCCAGGACCAGCCGTGCTAATGGTCTCCTGGACTGCGAGGTGGTGCAGGTGAGCCTGGTAAGAAAT
GGTGCCAAAGGAGAGCCCGACCGTGGTGAACGCGGTGAGGCTGGTATTCCAGGTGTTCCAGGAGCT
AAAGGCGAAGATGGCAAGGATGGATCACCTGGAGAACCTGGTGAATGGGCTTCCAGGAGCTGCAGGA
GAAAGGGGTGCCCTGGGTTCCGAGGACCTGCTGGACCAATGGCATCCCAGGAGAAAAGGGTCTGCT
```



[View online »](#)

GGAGAGCGTGGTCTCCAGGCCCTGCAGGGCCAGAGGAGCTGCTGGAGAACCTGGCAGAGATGGCGTC
CCTGGAGGTCCAGGAATGAGGGGCATGCCCGGAAGTCCAGGAGGACCAGGAAGTATGGGAAACCAGGG
CCTCCCGAAGTCAAGGAGAAAGTGGTCGACCAGTCTCTGGGCCATCTGGTCCCGAGGTACGCCT
GGTGTATGGGCTTCCCGGTCTAAAGGAAATGATGGTCTCTGGTAAGAATGGAGAACGAGGTGGC
CCTGGAGACCTGGCCCTCAGGGTCTCTGGAAAAGATGGTGAACCTGGACCTCAGGGACCCCAAGG
CCTACTGGGCTGGTGGTACAAAGGAGACACAGGACCCCTGGTCCACAAGGATTACAAGGCTTGCCT
GGTACAGGTGGTCTCCAGGAGCAAGGGTATGCTGGTGGCCCTGGTGAACGTGGACCTCTGGATTGGCAGGG
CCTGGAGCTCCAGGAGGCAAGGGTATGCTGGTGGCCCTGGTGAACGTGGACCTCTGGATTGGCAGGG
GCCCCAGGACTTAGAGGTGGAGCTGGTCCCGTGGTCCCGAAGGAGGAAAAGGGTGTCTGGTCTCTCT
GGGCCACCTGGTGTCTGGTACTCTGGTCTGCAAGGAATGCCTGGAGAAAAGAGGAGGTCTTGAAGT
CCTGGTCAAAGGGTGACAAGGGTGAACCAGGCGGTCCAGGTGCTGATGGTGTCCAGGGAAGATGGC
CCAAGGGTCTACTGGTCTATTGGTCTCTGGCCAGCTGGCCAGCTGGAGATAAGGGTGAAGGT
GGTCCCCCGACTTCCAGGTATAGCTGGACCTCGTGGTAGCCCTGGTGAAGAGGTGAACTGGCCCT
CCAGGACCTGCTGGTTCCTGGTCTCTGGACAGAATGGTGAACCTGGTGGTAAAGGAGAAAGAGGG
GCTCCGGGTGAGAAAGGTGAAGGAGGCCCTCTGGAGTTCAGGACCCCTGGAGTTCTGGACCTGCT
GGTCTCTGGTCCCAAGGTGTCAAAGGTGAACGTGGCAGTCTGGTGGACCTGGTGTCTGGCTTC
CCTGGTGTCTGGTCTCTGGTCTCTGGTGTCTGGTGTCTGGTGTCTGGTGTCTGGTGTCTGGTGTCT
TCTCCAGGCAAGGATGGGCCCCAGGTCTGCGGGTAACTGGTGTCTGGCAGCCCTGGAGTGTCT
GGACAAAAGGTGATGCTGGCAACCAGGAGAGAAGGGATCGCCTGGTGGCCAGGGCCCACCAGGAGCT
CCAGGCCCACTTGGGATTGCTGGGATCACTGGAGCACGGGGTCTTGCAGGACCACCAGGCATGCCAGGT
CCTAGGGGAAGCCCTGGCCCTCAGGGTGTCAAGGGTGAAGTGGGAAACCAGGAGCTAACGGTCTCAGT
GGAGAACGTGGTCCCGTGGACCCAGGGTCTTCTGGTCTGGTGGTACAGTGGTGAACCTGGAAGA
GATGGAACCCCTGGATCAGATGGTCTTCCAGGCCGAGATGGATCTCTGGTGGCAAGGGATCGTGGT
GAAAATGGCTCTCTGGTGGCCCTGGTGTCTGGTGTCTGGTGTCTGGTGTCTGGTGTCTGGTGTCT
GGAAAGAGTGGTACAGAGGAGAAAAGTGGCCCTGCTGGCCCTGCTGGTGTCTGGTGTCTGGTGTCT
CGAGGTGTCTGGTCTCAAGGCCACGTGGTACAAAGGTGAAACAGGTGAACGTGGAGCTGCTGGC
ATCAAAGGACATCGAGGATTCCTGGTAAATCCAGGTGCCCGAGTTCTCCAGGCCCTGCTGGTCAAG
GGTGAATCGGCAGTCCAGGACCTGCAGGCCCCAGAGGACCTGTTGGACCCAGTGGACCTCTGGCAAA
GATGGAACAGTGGACATCCAGGTCCCATTGGACCACCAGGGCCCTCGAGGTAACAGAGGTGAAAGAGGA
TCTGAGGGCTCCCAGGCCACCCAGGGCAACCAGGCCCTCTGGACCTCTGGTGGCCCTGGTCTTGC
TGTGGTGGTGTGGAGCCGCTGCCATTGCTGGGATTGGAGGTGAAAAGCTGGCGGTTTTGCCCGTAT
TATGGAGATGAACCAATGGATTTCAAAATCAACACCGATGAGATTATGACTTCACTCAAGTCTGTTAAT
GGACAAATAGAAAGCCTCATTAGTCTGATGGTCTCGTAAAAACCCCGTAGAAACTGCAGAGACCTG
AAATTCTGCCATCCTGAACTCAAGAGTGGAGAATACTGGGTTGACCCTAACCAAGGATGCAAAATGGAT
GCTATCAAGGTATTCTGTAATAAGGAACTGGGAAAACATGCATAAGTGGCAATCCTTTGAATGTCCA
CGGAAACACTGGTGGACAGATTCTAGTGTGAGAAGAAACACGTTTGGTTTGGAGAGTCCATGGATGGT
GGTTTTAGTTAGTACGGCAATCCTGAACTTCTGAAGATGTCTTGTATGTGCAGTGGCATTCTCT
CGACTTCTCCAGCCGAGCTTCCAGAACATCACATCACTGCAAAAAATAGCATTGCATACATGGAT
CAGGCCAGTGGAAATGTAAGAAGGCCCTGAAGCTGATGGGTCAAATGAAGGTGAATTCAGGCTGAA
GGAAATAGCAAAATCACCTACACAGTTCTGGAGGATGGTTGCACGAAACACACTGGGGAATGGAGCAAA
ACAGTCTTTGAATATCGAACACGCAAGGCTGTGAGACTACCTATTGTAGATATTGCACCCTATGACATT
GGTGGTCTGATCAAGAATTTGGTGTGGACGTTGGCCCTGTTTGTCTTTTA
ACGCGTACGCGGCCGCTCGAGCAGAACTCATCTCAGAAGAGGATCTGGCAGCAAATGATATCCTGGAT
TACAAGGATGACGACGATAAGGTTTAAACGGCCGGC

Protein Sequence: >Peptide sequence encoded by RC211766
 Blue=ORF Red=Cloning site Green=Tag(s)

MMSFVQKGSWLLALLHPTIILAQQEAVEGGCSHLGQSYADRDVWKPEPCQICVCDSSGVL CDDIICDD
 QELDCNP EIPFGECCAVCPQPTAPTRPPNGQGPQPKGDPGPPGIPGRNGDPGIPGQSPGSPGPP
 GICESCPTGPQNYSPQYSDVKSGVAVGGLAGYPGAGPPGPPGTSGHPGSPGSPGYQGGPEPG
 QAGPSGPPGPPGAI GPSGPAKDGESGRPRGPRGERLPGPPGIKGPAGIPGFPGMKGHRGFDGRNGEKG
 ETGAPGLKGENLPGENGAPGPMGPRGAPGERGRPLPGAAGARGNDGARGSDGQPGPPPGTAGFPG
 SPGAKGEVGPAGSPGNSGAPGQRGEPGQGHAGAQP GPPGPPGINGSPPGKGEMGAPGAPGLMGARG
 PPGPAGANGAPGLRGGAGEPGKNGAKGEPGRGERGEAGIPGVGAKGEDGKDGSPGEPGANLPGAAG
 ERGAPGFRGPAGNIPGEKGPAGERGAPGAPRGAAGEPRDGVPGGPMRGMPSGPPGSDGKPG
 PPGSQGESGRPPGSPGPRGQPGVMGFPGKNGDAPGKNGERGGPGGPPGKNGETGPQGGP
 PTGGGDKGDTGPPGQGLQGLPGTGGPPGENGKPGEPGPKGDAGAPGAGGKGDAGAPGERGPPGLAG
 APGLRGGAGPPGEPGGKAAGPPGPPGAAGT PGLQMPGERGGLSPGPKGDKGEPGGADGVPKDG
 PRGPTGPIGPPGAPGQGDKEGGAPLPGIAGPRGSPGERGETGPPGAPGFPAGPQNGEPGGKGERG
 APGEKGGGPPVAGPPGSGPAGPPGQGVKGERGSPGPGAAGFPAGRLPGPPGNSGPPGPPSG
 SPGKDGPPGAPAGTAPGSPGVS GPKGDAGQPGEKGSPPGAQGGPAGPGLGIAGITGARGLAGPPMPG
 PRGSPGQGVKGESGKPGANL SGERGPPGQGLPGLAGTAGEPGRDGNP GSDGLPGRDGSPPGKDRG
 ENGSPGAPGAPGHPGPPVGPAGKSGDRGESGAPGAPAGPAGSRGAPGQPRGDKGETGERGAAG
 IKGHRGFPNGAPGSPGAGQQAIGSPGAPRGPVPSGPPGKDGTS GHPPGIPGPPRGRNGERG
 SEGSPGHGQPPGPPGAPGCCGGVGA AAIAGIGGEKAGGFAPYYGDEPMDFKINTDEIMTSLKSVN
 GQIESLISP DGSRKNPARNCRDLKFCHEPKLSGEYWVDPNQCKLDAIKVFCNMETGETCISANPLNVP
 RKHWWTDSSAEKKHWFGE SMDGGFQFSYGNPELPELDVQLAFLRLLSSRASQNTYHCKNSIAYMD
 QASGNVKKALKLMGSNEGEFKAE GNSKFTYTVLEDGCTKHTGEWSKTVFEYRTRKAVRLPIVDIAPYDI
 GPPDQEF GVDVGPVCFL
 TRTRPLEQKLISEEDLAANDILDYKDDDDKV

Recombinant protein using RC211766 also available, [TP311766](#)

Chromatograms: https://cdn.origene.com/chromatograms/mg2674_a05.zip

Restriction Sites: SgfI-MluI

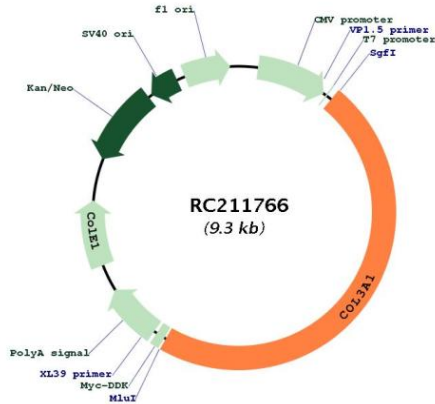
Cloning Scheme:



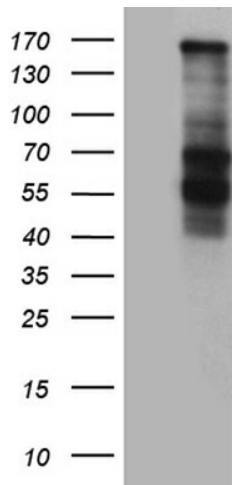
ACCN: NM_000090

ORF Size:	4398 bp
OTI Disclaimer:	The molecular sequence of this clone aligns with the gene accession number as a point of reference only. However, individual transcript sequences of the same gene can differ through naturally occurring variations (e.g. polymorphisms), each with its own valid existence. This clone is substantially in agreement with the reference, but a complete review of all prevailing variants is recommended prior to use. More info
OTI Annotation:	This clone was engineered to express the complete ORF with an expression tag. Expression varies depending on the nature of the gene.
Components:	The ORF clone is ion-exchange column purified and shipped in a 2D barcoded Matrix tube containing 10ug of transfection-ready, dried plasmid DNA (reconstitute with 100 ul of water).
Reconstitution Method:	<ol style="list-style-type: none">1. Centrifuge at 5,000xg for 5min.2. Carefully open the tube and add 100ul of sterile water to dissolve the DNA.3. Close the tube and incubate for 10 minutes at room temperature.4. Briefly vortex the tube and then do a quick spin (less than 5000xg) to concentrate the liquid at the bottom.5. Store the suspended plasmid at -20°C. The DNA is stable for at least one year from date of shipping when stored at -20°C.
RefSeq:	NM_000090.4
RefSeq Size:	5489 bp
RefSeq ORF:	4401 bp
Locus ID:	1281
UniProt ID:	P02461
Cytogenetics:	2q32.2
Domains:	COLFI, VWC, Collagen
Protein Families:	Druggable Genome
Protein Pathways:	ECM-receptor interaction, Focal adhesion
MW:	138.6 kDa
Gene Summary:	This gene encodes the pro-alpha1 chains of type III collagen, a fibrillar collagen that is found in extensible connective tissues such as skin, lung, uterus, intestine and the vascular system, frequently in association with type I collagen. Mutations in this gene are associated with Ehlers-Danlos syndrome types IV, and with aortic and arterial aneurysms. Two transcripts, resulting from the use of alternate polyadenylation signals, have been identified for this gene. [provided by R. Dagleish, Feb 2008]

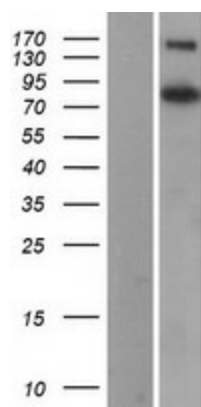
Product images:



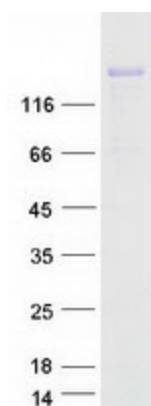
Circular map for RC211766



HEK293T cells were transfected with the pCMV6-ENTRY control (Cat# [PS100001], Left lane) or pCMV6-ENTRY COL3A1 (Cat# RC211766, Right lane) cDNA for 48 hrs and lysed. Equivalent amounts of cell lysates (5 ug per lane) were separated by SDS-PAGE and immunoblotted with anti-COL3A1 antibody (Cat# [TA812161]). Positive lysates [LY400026] (100ug) and [LC400026] (20ug) can be purchased separately from OriGene.



Western blot validation of overexpression lysate (Cat# [LY400026]) using anti-DDK antibody (Cat# [TA50011-100]). Left: Cell lysates from untransfected HEK293T cells; Right: Cell lysates from HEK293T cells transfected with RC211766 using transfection reagent MegaTran 2.0 (Cat# [TT210002]).



Coomassie blue staining of purified COL3A1 protein (Cat# [TP311766]). The protein was produced from HEK293T cells transfected with COL3A1 cDNA clone (Cat# RC211766) using MegaTran 2.0 (Cat# [TT210002]).