

Product datasheet for RC211264

STARS (ABRA) (NM_139166) Human Tagged ORF Clone

Product data:

Product Type:	Expression Plasmids
Product Name:	STARS (ABRA) (NM_139166) Human Tagged ORF Clone
Tag:	Myc-DDK
Symbol:	STARS
Synonyms:	STARS
Mammalian Cell Selection:	Neomycin
Vector:	pCMV6-Entry (PS100001)
E. coli Selection:	Kanamycin (25 ug/mL)
ORF Nucleotide Sequence:	>RC211264 ORF sequence Red=Cloning site Blue=ORF Green=Tags(s)

TTTTGTAATACGACTCACTATAGGGCGGCCGGGAATTCGTCGACTGGATCCGGTACCGAGGAGATCTGCC
GCC**CGGATCGCC**

ATGGCTCCGGGCGAAAAGGAAAGTGGGGAGGGCCAGCCAAGAGCGCCCTCCGGAAGATACGCACAGCCA
CCCTGGTCATCAGCTTGGCCGAGGTTGGCAGCAGTGGGCGAATGAGAACAGCATCAGGCAGGCCAGGA
GCCTACAGGCTGGCTGCCGGGAGGGACCCAGGACTCACCTCAAGCTCCTAAACCAATCACACCCCTACT
TCACACCAGAAAGCTCAGAGTGCCCAAAGTCGCCACCCCGCCTGCCAGAAGGACATGGAGATGGACAA
GCTCAGAGAAAGCCCTGAGTTTCTCACATCAAAAAGAAAGAGGTGTCCAAAACGGTGGTCAGCAAGAC
TTACGAGAGAGGAGGGGACGTGAGCCACCTCAGCCACAGGTACGAGAGGGATGCTGGTGTCTTGAACCT
GGGCAGCCAGAGAATGACATTGACAGAATCCTCCACAGCCACGGCTCCCCAACGCGGAGGAGAAAATGTG
CCAACCTGGTGTCTGAGCTAACCAAGGGCTGGAGAGTGTGGAGCAGGAGGAGCCACATGGAGGAGTGA
CAGCGTAGACACAGAGGACAGCGGCTATGGAGGAGAGGCTGAGGAGAGGCCCGAGCAGGATGGAGTGCAG
GTGGCTGTGGTCAGGATCAAGCGCCCTTGCCCTCCAGGTAACAGATTTACAGAGAACTCAACTGCA
AAGCCCAACAGAAATATAGCCAGTGGGCAACTGAAAGGGAGATGGCAGCAGTGGGCTGATGAACACAT
ACAATCCCAGAAGCTCAATCCTTTCAGTGAAGAGTTTGATTACGAGCTGGCCATGTCCACCCGCCTACAC
AAAGGAGATGAGGGCTATGGCCGCCCAAAGAAGGAACCAAACTGCTGAAAGGGCCAAGCGTGTGAGG
AGCACATCTACAGGAAAATGATGGACATGTGCTTCATTATCTGCACAATGGCTCGCCACAGACGAGATGG
CAAGATCCAGGTTACTTTTGGAGATCTCTTTGACAGATACGTTTCGATTTTCAGATAAAGTGTGGGCATT
CTCATGCGTGCCAGGAAACATGGACTGGTAGACTTTGAAGGAGAGATGCTATGGCAAGGCCGAGATGACC
ATGTTGTGATTACGCTACTCAAG

ACGCGTACGCGGCCGCTCGAGCAGAAACTCATCTCAGAAGAGGATCTGGCAGCAATGATATCCTGGATT
ACAAGGATGACGACGATAAGGTTTAA



[View online »](#)

Protein Sequence: >RC211264 protein sequence
Red=Cloning site Green=Tags(s)

MAPGEKESGEGPAKSALRKIRTATLVISLARGWQQWANENSIRQAQEPTGWLPGGTQDSPQAPKPIPTPT
 SHQKAQSAPKSPRLPEGHGDGQSSEKAPEVSHIKKKEVSKTVVSKTYERGGDVSHLSHRYERDAGVLEP
 GQFENDIDRILHSHGSPTRRRKCANLVSELTGWRVMEQEPTWRSDSVDTEDSGYGGEAEERPEQDGVQ
 VAVVRIKRPLPSQVNRFTKLNCKAQQKYSPVGNLKGWRWQWQWADEHIQSQKLNPFSEEFDYELAMSTR LH
 KGDEGYGRPKEGTKTAERAKRAEEHIYREMMDMCFIICTMARHRRDGGKIQVTFGDLFDRYVRI SDKVYVGI
 LMRARKHGLVDFEGEMLWQGRDDHVITLLK

TRTRPLEQKLISEEDLAANDILDYKDDDDKV

Chromatograms: https://cdn.origene.com/chromatograms/mk6369_f01.zip

Restriction Sites: SgfI-MluI

Cloning Scheme:



ACCN: NM_139166

ORF Size: 1143 bp

OTI Disclaimer: The molecular sequence of this clone aligns with the gene accession number as a point of reference only. However, individual transcript sequences of the same gene can differ through naturally occurring variations (e.g. polymorphisms), each with its own valid existence. This clone is substantially in agreement with the reference, but a complete review of all prevailing variants is recommended prior to use. [More info](#)

OTI Annotation: This clone was engineered to express the complete ORF with an expression tag. Expression varies depending on the nature of the gene.

Components: The ORF clone is ion-exchange column purified and shipped in a 2D barcoded Matrix tube containing 10ug of transfection-ready, dried plasmid DNA (reconstitute with 100 ul of water).

Reconstitution Method:

1. Centrifuge at 5,000xg for 5min.
2. Carefully open the tube and add 100ul of sterile water to dissolve the DNA.
3. Close the tube and incubate for 10 minutes at room temperature.
4. Briefly vortex the tube and then do a quick spin (less than 5000xg) to concentrate the liquid at the bottom.
5. Store the suspended plasmid at -20°C. The DNA is stable for at least one year from date of shipping when stored at -20°C.

RefSeq: [NM_139166.3](#)

RefSeq Size: 2831 bp

RefSeq ORF: 1146 bp

Locus ID: 137735

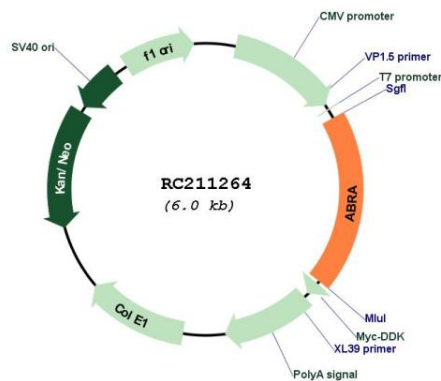
UniProt ID: [Q8N0Z2](#)

Cytogenetics: 8q23.1

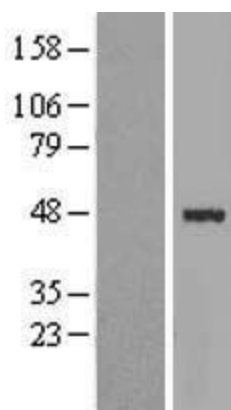
MW: 43.1 kDa

Gene Summary: Acts as an activator of serum response factor (SRF)-dependent transcription possibly by inducing nuclear translocation of MKL1 or MKL2 and through a mechanism requiring Rho-actin signaling.[UniProtKB/Swiss-Prot Function]

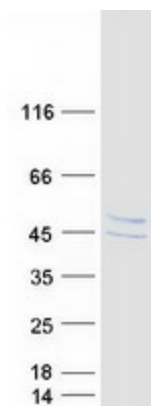
Product images:



Circular map for RC211264



Western blot validation of overexpression lysate (Cat# [LY408369]) using anti-DDK antibody (Cat# [TA50011-100]). Left: Cell lysates from untransfected HEK293T cells; Right: Cell lysates from HEK293T cells transfected with RC211264 using transfection reagent MegaTran 2.0 (Cat# [TT210002]).



Coomassie blue staining of purified ABRA protein (Cat# [TP311264]). The protein was produced from HEK293T cells transfected with ABRA cDNA clone (Cat# RC211264) using MegaTran 2.0 (Cat# [TT210002]).