

## Product datasheet for **RC211200**

### **CYP2R1 (NM\_024514) Human Tagged ORF Clone**

#### **Product data:**

Product Type:	Expression Plasmids
Product Name:	CYP2R1 (NM_024514) Human Tagged ORF Clone
Tag:	Myc-DDK
Symbol:	CYP2R1
Mammalian Cell Selection:	Neomycin
Vector:	pCMV6-Entry (PS100001)
E. coli Selection:	Kanamycin (25 ug/mL)



[View online »](#)

**ORF Nucleotide Sequence:**

>RC211200 ORF sequence  
 Red=Cloning site Blue=ORF Green=Tags(s)

TTTTGTAATACGACTCACTATAGGGCGGCCGGGAATTCGTCGACTGGATCCGGTACCGAGGAGATCTGCC  
 GCC**CGCATCGCC**

ATGTGGAAGCTTTGGAGAGCTGAAGAGGGCGCGCGCGCTCGGGCGCGCTTCTCCTGCTCTTCCG  
 CGCTAGGGGTCCGCCAGCTGCTGAAGCAGAGGCGCCGATGGGCTTCCCCCGGGCCGCCGGGGCTGCC  
 ATTTATCGGCAACATCTATTCCCTGGCAGCCTCATCTGAGCTTCCCATGTCTACATGAGAAAGCAGAGC  
 CAGGTGTACGGAGAGATCTTCAGTTTAGATCTTGGAGGCATATCAACTGTGGTTCTAAATGGCTATGATG  
 TAGTAAAGGAATGCCTTGTTCATCAAAGCGAAATTTTGCAGACAGACCATGCCTTCCTTTATTCATGAA  
 GATGACAAAAATGGGAGGCTTACTCAATCCAGATATGGCCGAGGATGGGTTGATCACAGACGATTAGCT  
 GTAACAGTTTTCGATATTTGGATATGGCCAAAAGTCTTTTGAATCTAAAATCTTGAAGAAACCAAAAT  
 TTTTCAATGATGCTATTGAAACATACAAAGGTAGACCTTTTGACTTTAAACAGTTAATAACGAATGCTGT  
 TCAAACATAACCAATCTGATCATTTTTGGAGAACGATTCACTTATGAAGACACCGATTTTCAGCACATG  
 ATTGAGTTATTTAGTAAAATGTGGAACAGCTGCCAGTGCCTCAGTCTTCTTGTATAATGCCTTTCCAT  
 GGATTGGCATCCTGCCTTTTGGAAAACATCAACAGCTGTTTAGAAATGCAGCTGTAGTCTATGATTTTCT  
 CTCAGACTCATTGAAAAGCTTCAGTCAACAGAAAGCCTCAGCTACCTCAGCATTTTGTGATGCTTAT  
 TTAGATGAGATGGATCAAGGTAAAAATGACCCATCATCTACTTTCTCAAAGAAAACCTAATTTTCTCAG  
 TGGGTGAACATCATATTGCTGGAAGTAAAACACAACCAATGTGTACGGTGGGCGATTCTTTTCATGGC  
 CCTTTATCCTAATATTCAAGGACAAGTTCAGAAAGAGATTGATTAATTATGGGCCCTAATGGGAAGCCT  
 TCTTGGGACGACAAATGCAAAATGCCTTATACTGAGGCAGTTTTCATGAAGTTTAAAGATTCTGTAATA  
 TAGTTCATTAGGATTTCCATGCAACCTCTGAAGATGCAGTTGTACGTGGTTATTCCATTCTGTAAGG  
 CACAACAGTAATTACAAATCTTTATTCTGTACACTTTGATGAAAAGTACTGGAGAGACCCAGAAAGTTC  
 CATCCTGAGCGATTTCTGGACAGCAGTGGATATTTTCCAAAGAAGGAAGCTTTGGTTCTTTTTCCCTAG  
 GAAGAAGACATTGCTTGGAGAACACTGGCTCGGATGGAATGTTCTTGTTTTTTACAGCATTGCTTCA  
 GAGGTTTCATTTGCATTTCCACATGAAGTCCAGATCTGAAGCCCAGGTTAGGCATGACATTGCAG  
 CCCAACCTACCTCATCTGTGCTGAAAGACGC

**ACGCGT**ACGCGGCCGCTCGAGCAGAAACTCATCTCAGAAGAGGATCTGGCAGCAAATGATATCCTGGATT  
 ACAAGGATGACGACGATAAGGTTTAA

**Protein Sequence:**

>RC211200 protein sequence  
 Red=Cloning site Green=Tags(s)

MWKLWRAEEGAAALGGALFLLLALGVRQLLKQRRPMGFPPGPPGLPFIGNIYSLAASSELPHVYMRKQS  
 QVYGEIFSLDLGGISTVVLNGYDVVKECLVHQSEIFADRPCLPLFMKMTKMGLLNSRYGRGWVDRRLA  
 VNSFRYFGYGQKSFESKILEETKFFNDIETKGRPFDFKQLITNAVSNITNLIIFGERFTYEDTDFQHM  
 IELFSEVELAASASVFLYNAPFWIGILPFGKHQQLFRNAVVYDFLSRLIEKASVNRKQPLPQHFVDAY  
 LDEMDDQKNDPSSTF SKENLIFSVGELIIAGTETTTNVLRWAILFMALYPNIQQGVQKEIDLIMGPNGKP  
 SWDDKCKMPYTEAVLHEVLRFCNIVPLGIFHATSEDAVVRGYSIPKGTTVITNLVSVHFDEKYWRDPEVF  
 HPERFLDSSGYFAKKEALVPFSLGRRHCLGEHLARMEMFLFFALLQRFHLHFPHELVPDLKPRLGMTLQ  
 PQPYLICAERR

**TR**TRPLEQKLISEEDLAANDILDYKDDDDKV

**Chromatograms:**

[https://cdn.origene.com/chromatograms/mk6590\\_d07.zip](https://cdn.origene.com/chromatograms/mk6590_d07.zip)

**Restriction Sites:**

Sgfl-MluI

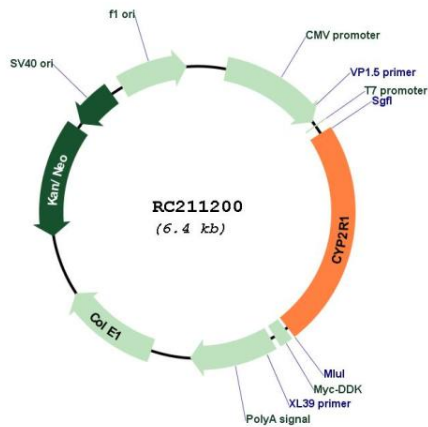


**Protein Families:** Druggable Genome, P450, Transmembrane

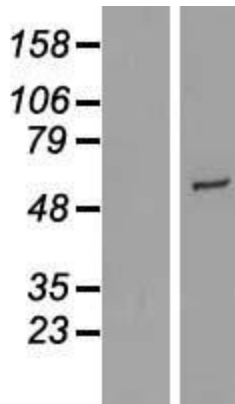
**MW:** 57.4 kDa

**Gene Summary:** This gene encodes a member of the cytochrome P450 superfamily of enzymes. The cytochrome P450 proteins are monooxygenases which catalyze many reactions involved in drug metabolism and synthesis of cholesterol, steroids and other lipids. This enzyme is a microsomal vitamin D hydroxylase that converts vitamin D into the active ligand for the vitamin D receptor. A mutation in this gene has been associated with selective 25-hydroxyvitamin D deficiency. [provided by RefSeq, Jul 2008]

**Product images:**



Circular map for RC211200



Western blot validation of overexpression lysate (Cat# [LY411259]) using anti-DDK antibody (Cat# [TA50011-100]). Left: Cell lysates from untransfected HEK293T cells; Right: Cell lysates from HEK293T cells transfected with RC211200 using transfection reagent MegaTran 2.0 (Cat# [TT210002]).



Coomassie blue staining of purified CYP2R1 protein (Cat# [TP311200]). The protein was produced from HEK293T cells transfected with CYP2R1 cDNA clone (Cat# RC211200) using MegaTran 2.0 (Cat# [TT210002]).