

Product datasheet for RC211146L1

G6PC2 (NM_021176) Human Tagged Lenti ORF Clone

Product data:

Product Type:	Expression Plasmids
Product Name:	G6PC2 (NM_021176) Human Tagged Lenti ORF Clone
Tag:	Myc-DDK
Symbol:	G6PC2
Synonyms:	IGRP
Mammalian Cell Selection:	None
Vector:	pLenti-C-Myc-DDK (PS100064)
E. coli Selection:	Chloramphenicol (34 ug/mL)
ORF Nucleotide Sequence:	The ORF insert of this clone is exactly the same as(RC211146).
Restriction Sites:	SgfI-MluI
Cloning Scheme:	

Cloning sites used for ORF Shuttling:



* The last codon before the Stop codon of the ORF.

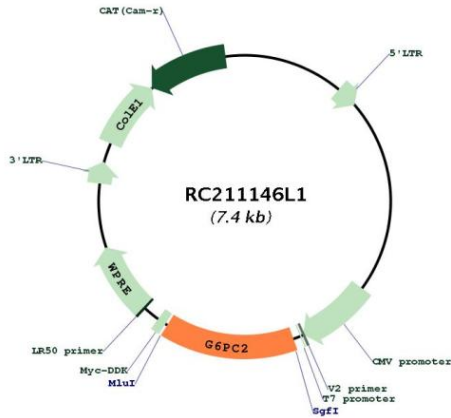
ACCN:	NM_021176
ORF Size:	1065 bp



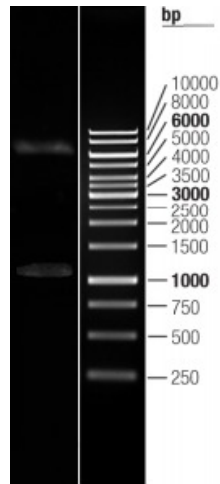
[View online »](#)

OTI Disclaimer:	The molecular sequence of this clone aligns with the gene accession number as a point of reference only. However, individual transcript sequences of the same gene can differ through naturally occurring variations (e.g. polymorphisms), each with its own valid existence. This clone is substantially in agreement with the reference, but a complete review of all prevailing variants is recommended prior to use. More info
OTI Annotation:	This clone was engineered to express the complete ORF with an expression tag. Expression varies depending on the nature of the gene.
Components:	The ORF clone is ion-exchange column purified and shipped in a 2D barcoded Matrix tube containing 10ug of transfection-ready, dried plasmid DNA (reconstitute with 100 ul of water).
Reconstitution Method:	<ol style="list-style-type: none">1. Centrifuge at 5,000xg for 5min.2. Carefully open the tube and add 100ul of sterile water to dissolve the DNA.3. Close the tube and incubate for 10 minutes at room temperature.4. Briefly vortex the tube and then do a quick spin (less than 5000xg) to concentrate the liquid at the bottom.5. Store the suspended plasmid at -20°C. The DNA is stable for at least one year from date of shipping when stored at -20°C.
RefSeq:	NM_021176.2
RefSeq Size:	3096 bp
RefSeq ORF:	1068 bp
Locus ID:	57818
UniProt ID:	Q9NQR9
Cytogenetics:	2q31.1
Protein Families:	Druggable Genome, Transmembrane
Protein Pathways:	Adipocytokine signaling pathway, Galactose metabolism, Glycolysis / Gluconeogenesis, Insulin signaling pathway, Metabolic pathways, Starch and sucrose metabolism
MW:	40.6 kDa
Gene Summary:	This gene encodes an enzyme belonging to the glucose-6-phosphatase catalytic subunit family. These enzymes are part of a multicomponent integral membrane system that catalyzes the hydrolysis of glucose-6-phosphate, the terminal step in gluconeogenic and glycogenolytic pathways, allowing the release of glucose into the bloodstream. The family member encoded by this gene is found in pancreatic islets and does not exhibit phosphohydrolase activity, but it is a major target of cell-mediated autoimmunity in diabetes. Several alternatively spliced transcript variants of this gene have been described, but their biological validity has not been determined. [provided by RefSeq, Jul 2008]

Product images:



Circular map for RC211146L1



Double digestion of RC211146L1 using SgfI and MluI