

## Product datasheet for **RC210969**

### **POU2F3 (NM\_014352) Human Tagged ORF Clone**

#### **Product data:**

Product Type:	Expression Plasmids
Product Name:	POU2F3 (NM_014352) Human Tagged ORF Clone
Tag:	Myc-DDK
Symbol:	POU2F3
Synonyms:	Epoc-1; OCT-11; OCT11; OTF-11; PLA-1; PLA1; Skn-1a
Mammalian Cell Selection:	Neomycin
Vector:	pCMV6-Entry (PS100001)
E. coli Selection:	Kanamycin (25 ug/mL)



[View online »](#)

**ORF Nucleotide Sequence:**

>RC210969 ORF sequence  
 Red=Cloning site Blue=ORF Green=Tags(s)

TTTTGTAATACGACTCACTATAGGGCGGCCGGAATTCGTCGACTGGATCCGGTACCGAGGAGATCTGCC  
 GCC**CGGATCGCC**

ATGGTGAATCTGGAGTCCATGCACACAGATATCAAGATGAGTGGGGATGTAGCCGATTCCACGGATGCTC  
 GCAGACTCTCAGCCAGGTGGAGCCAGGAAATGATCGAAATGGCCTAGATTTCAACAGGCAGATTAAC  
 CGAAGATCTCAGTGAAGTCCCTGCAGCAGACCCTCTCCCATCGGCCATGCCACCTGAGTCAAGGACCTGCC  
 ATGATGTCGGAAACCAATGTCTGGGCTAAATGCCAGCCATGTGAGGACATGGCTTCCCTCCATCCGC  
 TCCAGCAGCTTGTGCTGGTTCCCGGCCACTTACAGTCTGTATCCAGTTCCTGCTATCTCAGACCCAGCC  
 TGGGCAGCAAGGTCTGCAGCCAAATCTCTCCCTTTCCACAGCAACAAAGCGGTCTCTCTCCACAG  
 ACTGGGCCGGGACTGGCATCCCAGGCATTTGGGCACCCTGGGCTGCCAGGATCCTCTTTAGAACCCACC  
 TGAAGCATCCCAGCATCTCCAGTGCCCAAGCATCTACCCAGCTCTGGAGGGCCGATGAGCCAGTGA  
 CCTCGAGGAGCTGGAGAAGTTTCCAAGACCTTCAAGCAGAGGCGCATTAAAGCTGGGCTTACACAGGGA  
 GATGTGGGGCTGGCGATGGGAAAGCTGTATGGCAACGACTTCAGCCAGACCACCATCTCAGATTTGAGG  
 CCCTCAACCTGAGCTTCAAGAACATGTGCAAGCTCAAGCCCTGCTGGAGAAGTGGCTGAATGATGCAGA  
 GTCCTCTCCGTCAGACCCCTCAGTGAGCAGCCAGCTCCTACCCAGCCTCAGTGAAGTATTTGGTAGG  
 AAGAGAAAGAAACGGACCAGCATCGAGACCAACATCCGCTGACTCTGGAGAAGAGGTTTCAAGATAACC  
 CAAAACCCAGCTCGGAGGAGATCTCCATGATTGCAGAGCAGTTGTCCATGGAGAAGGAGGTGGTGGGGT  
 CTGGTTCTGCAACCGACGCCAAAAGGAGAAGCGAATCAACTGCCCTGTGGCCACCCCATCAAACCACT  
 GTCTACAACTCCCGCTGGTATCTCCCTCAGGCTCTCTGGGCCCCCTCTCTGTCCCTCTGTCCACAGTA  
 CCATGCCCTGGAAACAGTAACGTCATCTCTCCCTGGGAAACAACAGCAGGCCTTCATCTCCTGGCTCAGG  
 ACTCCACGCCAGCAGCCCACTGCATCTCAAATAACTCAAAGCAGCAGTGAACCTCCGCTCCAGTTTT  
 AACTCTCAGGATCTTGGTACCGATGGAATCATTCCACCTACCTCCAC

**ACGCGT**ACGCGGCCGCTCGAGCAGAACTCATCTCAGAAGAGGATCTGGCAGCAAATGATATCCTGGATT  
 ACAAGGATGACGACGATAAGGTTTAA

**Protein Sequence:**

>RC210969 protein sequence  
 Red=Cloning site Green=Tags(s)

MVNLESMHTDIKMSGDVADSTDARSTLSQVEPGNDRNGLDFNRQIKTEDLSDSLQQTLSHRPCHLSQGPA  
 MMSGNQMSGLNASPCQDMASLHPLQQLVLPVGHLSVVSQFLLSQTQPGQQLQPNLLFPFQQQSGLLLPQ  
 TGPLASQAFGHPGLPGSSLEPHLEASQHLVVPKHLPSGGADEPSDLEELEKFAKTFKQRRIKLGFQ  
 DVGLAMGKLYGNDFSQTTISRFEALNLSFKNMCKLPLLEKWLNDAAESSPSDPSVSTPSSYPVSLSEVFR  
 KRKKRTSIETNIRLTLEKRFQDNPKPSSEESI SMIAEQLSMEKEVVRVWFNRRQKEKRINCPVATPIKPP  
 VYNSRLVSPSGSLGPLSVPPVHSTMPGTVTSSCSPGNNSRPSSPGSLHASSPTASQNNKAAVNSASSF  
 NSSGSWYRWNHSTYLH

**TR**TRPLEQKLISEEDLAANDILDYKDDDDKV

**Chromatograms:**

[https://cdn.origene.com/chromatograms/mk6371\\_d06.zip](https://cdn.origene.com/chromatograms/mk6371_d06.zip)

**Restriction Sites:**

SgfI-MluI

Cloning Scheme:



ACCN: NM\_014352

ORF Size: 1308 bp

OTI Disclaimer: The molecular sequence of this clone aligns with the gene accession number as a point of reference only. However, individual transcript sequences of the same gene can differ through naturally occurring variations (e.g. polymorphisms), each with its own valid existence. This clone is substantially in agreement with the reference, but a complete review of all prevailing variants is recommended prior to use. [More info](#)

OTI Annotation: This clone was engineered to express the complete ORF with an expression tag. Expression varies depending on the nature of the gene.

Components: The ORF clone is ion-exchange column purified and shipped in a 2D barcoded Matrix tube containing 10ug of transfection-ready, dried plasmid DNA (reconstitute with 100 ul of water).

- Reconstitution Method:
1. Centrifuge at 5,000xg for 5min.
  2. Carefully open the tube and add 100ul of sterile water to dissolve the DNA.
  3. Close the tube and incubate for 10 minutes at room temperature.
  4. Briefly vortex the tube and then do a quick spin (less than 5000xg) to concentrate the liquid at the bottom.
  5. Store the suspended plasmid at -20°C. The DNA is stable for at least one year from date of shipping when stored at -20°C.

RefSeq: [NM\\_014352.4](#)

RefSeq Size: 3013 bp

RefSeq ORF: 1311 bp

Locus ID: 25833

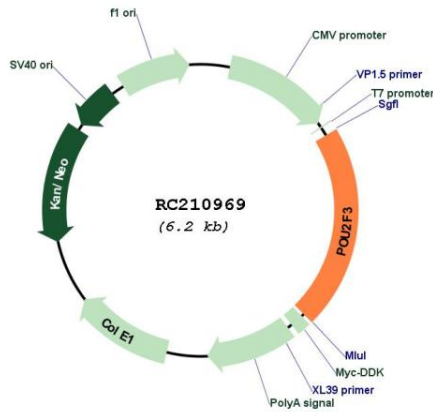
UniProt ID: [Q9UK19](#)

Cytogenetics: 11q23.3

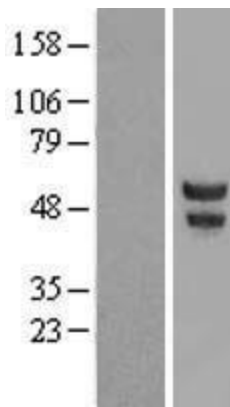
**MW:** 47.4 kDa

**Gene Summary:** This gene encodes a member of the POU domain family of transcription factors. POU domain transcription factors bind to a specific octamer DNA motif and regulate cell type-specific differentiation pathways. The encoded protein is primarily expressed in the epidermis, and plays a critical role in keratinocyte proliferation and differentiation. The encoded protein is also a candidate tumor suppressor protein, and aberrant promoter methylation of this gene may play a role in cervical cancer. Alternatively spliced transcript variants encoding multiple isoforms have been observed for this gene. [provided by RefSeq, Sep 2011]

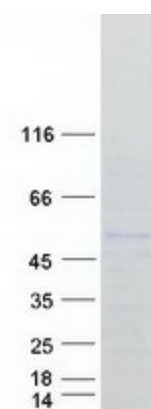
**Product images:**



Circular map for RC210969



Western blot validation of overexpression lysate (Cat# [LY415336]) using anti-DDK antibody (Cat# [TA50011-100]). Left: Cell lysates from untransfected HEK293T cells; Right: Cell lysates from HEK293T cells transfected with RC210969 using transfection reagent MegaTran 2.0 (Cat# [TT210002]).



Coomassie blue staining of purified POU2F3 protein (Cat# [TP310969]). The protein was produced from HEK293T cells transfected with POU2F3 cDNA clone (Cat# RC210969) using MegaTran 2.0 (Cat# [TT210002]).