

Product datasheet for **RC210853**

ACOT11 (NM_147161) Human Tagged ORF Clone

Product data:

Product Type:	Expression Plasmids
Product Name:	ACOT11 (NM_147161) Human Tagged ORF Clone
Tag:	Myc-DDK
Symbol:	ACOT11
Synonyms:	BFIT; STARD14; THEA; THEM1
Mammalian Cell Selection:	Neomycin
Vector:	pCMV6-Entry (PS100001)
E. coli Selection:	Kanamycin (25 ug/mL)



[View online »](#)

ORF Nucleotide Sequence:

>RC210853 ORF sequence
 Red=Cloning site Blue=ORF Green=Tags(s)

TTTTGTAATACGACTCACTATAGGGCGGCCGGGAATTCGTCGACTGGATCCGGTACCGAGGAGATCTGCC
 GCC**CGGATCGCC**

ATGATCCAGAATGTCGGAATCACCTGCGACGGGGCTTGGCCTCTGTGTTCTCCAACCGCACATCCCGGA
 AGTCAGCCTTACGTGCGGGAAACGACAGTGCCATGGCAGACGGCGAGGGATACCGGAACCCACGGAGGT
 GCAGATGAGCCAGCTGGTGTGCCTGCCACACCAACCAACGTGGTGAGCTGAGCGTCGGGCAGCTGCTC
 AAGTGGATTGACACCACGGCTTGCCTGTCCGCGGAGAGGCACGCTGGCTGCCCTGTGTACAGCTTCCA
 TGGATGACATCTATTTGAGCACACCATAGTGTGGACAAGTGGTGAATATCAAGGCCAAGGTGAACCG
 GGCCTTCAACTCCAGCATGGAGGTGGGCATCCAGGTGGCCTCGGAGGACCTGTGCTCTGAGAAGCAGTGG
 AATGTGTGCAAGGCCCTTGGCCACCTTCGTGGCCCGCCGAGAGATACCAAGGTGAAGCTGAAGCAGATCA
 CGCCGCGGACAGAAGAGGAGAAGATGGAGCACAGTGTGGCGGCTGAGCGCCGGCGCATGCGCCTTGCTA
 TGCAGACACCATCAAGGACCTCCTGGCCAACTGCGCCATTCAGGGCGATCTGGAGAGCAGAGACTGTAGC
 CGCATGGTGCCGGCTGAGAAGACCCGTGTGGAGAGTGTGGAGCTGGTCTGCCTCCCCACGCCAATCACC
 AGGGCAACACCTTTGGGGCCAGATCATGGCCTGGATGGAGAATGTGGCCACCATTGCAGCCAGCCGGCT
 CTGCCGTGCCACCCTACGCTGAAGGCCATTGAAATGTTCCACTTCCGAGGCCCGTCCCAGGTCCGGCAGC
 CGTCTGGTGCTCAAAGCCATCGTGAACAATGCCTTCAAACATAGCATGGAGGTGGGCGTGTGCGTGGAGG
 CCTATCGCCAGGAGGCTGAGACCCACGGCGCCACATCAACAGTGCCTTTATGACCTTTGTGGTCTGGA
 CGCAGATGACAGCCCCAGTTGCTGCCCTGGATTTCGGCCCCAGCCGGCGATGGTGAAGCAGACAGAGGTGC
 GAGGCCAGTGCCAGAAAGAAGATCCGCCCTGGACAGGAAGTACATCGTGTCTGTAAGCAGACAGAGGTGC
 CCCTCTCCGTCCCCTGGGACCCTAGCAACCAGGTGTACCTGAGCTACAATAACGTCTCCTCTTGAAGAT
 GCTTGTGGCCAAGGACAACCTGGGTGCTGTCTCGGAGATCAGTCAGGTCCGCTGTACACTCTGGAGGAT
 GACAAGTCTCTCTCTCCATCGAGATGGTGGTGCATGTGGATGCAGCCAGGCTTCTGCTGCTCT
 CGGACCTGCGTCAGAGGCCAGAGTGGGACAAGCACTACCGGAGCGTGGAGCTAGTGCAGCAGGTAGACGA
 GGACGACGCCATCTACCACGTCACCAGCCCTGCCCTCGGAGGTACACAAAGCCCCAGGACTTCGTGATC
 CTGGCCTCGAGGCGGAAGCCTTGTGACAATGGGACCCCTATGTCATCGCGCTGAGGTGGTCCAGCTGC
 CCACACCCGAGAGACGCCAGGTACAGACGCGGAGAGACCTCTGCTCAGGCTTCTGCCTTGGCGGA
 GGGGACCAGTGACCAAGGTATCTACTACAACCAGGCCACCCAGGTGTTCTCAACTATGTGACCACC
 AACGTGGCCGGCCTCTCTCTGAGTTCTACACCACCTTCAAGGCTTGTGAGCAGTTCTCTTGGACAACC
 GGATGATCTGGCCCCAGCCTCCAGACCCT

ACGCGTACGCGGCGGCTCGAGCAGAAACTCATCTCAGAAGAGGATCTGGCAGCAAATGATATCCTGGATT
 ACAAGGATGACGACGATAAGGTTTAA

Protein Sequence:

>RC210853 protein sequence
 Red=Cloning site Green=Tags(s)

MIQNVGNHLRRLASVFSNRTRSRSALRAGNDSAMADGEGYRNPTEVQMSQLVLPCHTNQRGELSVGQLL
 KWIDTTACL SAERHAGCPCVTASMDIYFEHTISVGQVNIKAKVNRANSSMEVGIQVASEDLCEKQW
 NVCKALATFVARREITKVKLKQITPRTEEEKMEHSVAAERRRMRLVYADTIKDLLANCAIQGDLESRDSC
 RMVPAEKTRVESVELVLPphanHQNTFGGQIMAWMENVATIAASRLCRAHPTLKAIEMFHRGPSQVGD
 RLVLKAI VNNAFKHSMEVGVCVEAYRQEAETHRRHINS AFMTFVVL DADDQPQLLPWIRPQPGDGERRYR
 EASARKKIRLDRKYIVSCKQTEVPLSVPWDP SNQVYL SYN NVSSLKMLVAKDNWVLSSEISQVRLYTLED
 DKFLSFHMEMVVHVDAQAFLLLSDLRQRPEWDKHYRSVELVQQVDEDDAIYHVTSPALGGHTKPD FVI
 LASRRKPCDNGDPYVIALRSVTLPTHRETPEYRGETLCSGFCLWREGDQLTKVSYNNQATPGVLNYVTT
 NVAGLSSEFYTTFKACEQFLLDNRNDLAPSLQTL

TRTRPLEQKLISEEDLAANDILDYKDDDDKV

Restriction Sites:

Sgfl-MluI

Cloning Scheme:


ACCN: NM_147161

ORF Size: 1782 bp

OTI Disclaimer: Due to the inherent nature of this plasmid, standard methods to replicate additional amounts of DNA in E. coli are highly likely to result in mutations and/or rearrangements. Therefore, OriGene does not guarantee the capability to replicate this plasmid DNA. Additional amounts of DNA can be purchased from OriGene with batch-specific, full-sequence verification at a reduced cost. Please contact our customer care team at custsupport@origene.com or by calling 301.340.3188 option 3 for pricing and delivery.

The molecular sequence of this clone aligns with the gene accession number as a point of reference only. However, individual transcript sequences of the same gene can differ through naturally occurring variations (e.g. polymorphisms), each with its own valid existence. This clone is substantially in agreement with the reference, but a complete review of all prevailing variants is recommended prior to use. [More info](#)

OTI Annotation: This clone was engineered to express the complete ORF with an expression tag. Expression varies depending on the nature of the gene.

Components: The ORF clone is ion-exchange column purified and shipped in a 2D barcoded Matrix tube containing 10ug of transfection-ready, dried plasmid DNA (reconstitute with 100 ul of water).

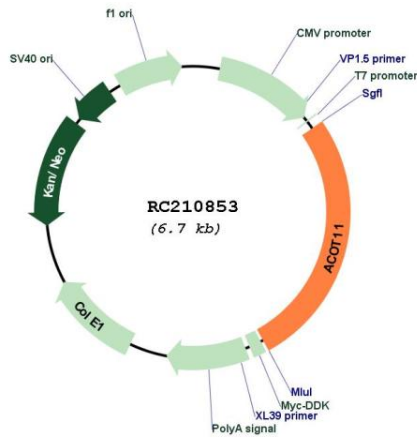
- Reconstitution Method:**
1. Centrifuge at 5,000xg for 5min.
 2. Carefully open the tube and add 100ul of sterile water to dissolve the DNA.
 3. Close the tube and incubate for 10 minutes at room temperature.
 4. Briefly vortex the tube and then do a quick spin (less than 5000xg) to concentrate the liquid at the bottom.
 5. Store the suspended plasmid at -20°C. The DNA is stable for at least one year from date of shipping when stored at -20°C.

RefSeq: [NM_147161.4](#)

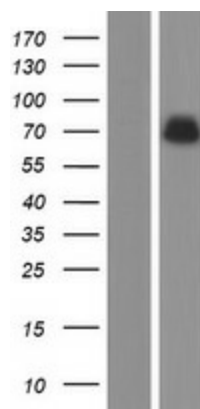
RefSeq Size: 3181 bp
 RefSeq ORF: 1785 bp
 Locus ID: 26027
 UniProt ID: [Q8WXI4](#)
 Cytogenetics: 1p32.3
 MW: 67.2 kDa

Gene Summary: This gene encodes a member of the acyl-CoA thioesterase family which catalyse the conversion of activated fatty acids to the corresponding non-esterified fatty acid and coenzyme A. Expression of a mouse homolog in brown adipose tissue is induced by low temperatures and repressed by warm temperatures. Higher levels of expression of the mouse homolog has been found in obesity-resistant mice compared with obesity-prone mice, suggesting a role of acyl-CoA thioesterase 11 in obesity. Alternative splicing results in transcript variants. [provided by RefSeq, Nov 2010]

Product images:



Circular map for RC210853



Western blot validation of overexpression lysate (Cat# [LY407821]) using anti-DDK antibody (Cat# [TA50011-100]). Left: Cell lysates from untransfected HEK293T cells; Right: Cell lysates from HEK293T cells transfected with RC210853 using transfection reagent MegaTran 2.0 (Cat# [TT210002]).