

Product datasheet for RC210613

Mitochondrial ribosomal protein L11 (MRPL11) (NM_170738) Human Tagged ORF Clone

Product data:

Product Type: Expression Plasmids
Product Name: Mitochondrial ribosomal protein L11 (MRPL11) (NM_170738) Human Tagged ORF Clone
Tag: Myc-DDK
Symbol: Mitochondrial ribosomal protein L11
Synonyms: CGI-113; L11MT; MRP-L11
Mammalian Cell Selection: Neomycin
Vector: pCMV6-Entry (PS100001)
E. coli Selection: Kanamycin (25 ug/mL)
ORF Nucleotide Sequence: >RC210613 representing NM_170738
 Red=Cloning site Blue=ORF Green=Tags(s)

TTTTGTAATACGACTCACTATAGGGCGGCCGGAATTCGTCGACTGGATCCGGTACCGAGGAGATCTGCC
 GCCCGGATCGCC

ATGTCAAAGCTCGGCCGGCCCGCCGGGGCCTCAGGAAGCCCGAGAGAGGCGTTTCCATCAACCAGTTTT
 GCAAGGAGTTCAATGAGAGGACAAAGGACATCAAGGAAGGCATTCCTCTGCCTACCAAGATTTAGTGAA
 GCCTGACAGGACATTTGAAATTAAGATTGGACAGCCACTGTTTCTACTTCTGAAGGCAGCAGCTGGG
 ATTGAAAAGGGGCCCGCAAACAGGAAAGAGGTGGCAGGCCTGGTACCTTGAAGCATGTGTATGAGA
 TTGCCCGCATCAAAGCTCAGGATGAGGCATTTGCCCTGCAGGATGTACCCCTGTCGTCTGTTGTCGGCTC
 CATCATCGGGTCTGCCGTTCTCTGGGCATTCCGGTGGTGAAGGACCTCAGTTCAGAAGAGCTTGCAGCT
 TTCCAGAAGGAACGAGCCATCTTCTGGCTGCTCAGAAGGAGGCAGATTTGGCTGCCAAGAAGAAGCTG
 CCAAGAAG

ACGCGTACGCGGCCGCTCGAGCAGAACTCATCTCAGAAGAGGATCTGGCAGCAAATGATATCCTGGATT
 ACAAGGATGACGACGATAAGGTTTAA

Protein Sequence: >RC210613 representing NM_170738
 Red=Cloning site Green=Tags(s)

MSKLGRAARGLRKPERGVSINQFCKEFNERTKDIKEGIPLPTKILVKPDRTFEIKIGQPTVSYFLKAAAG
 IEKGARQTGKEVAGLVTLKHVYEIARIKAQDEAFALQDVPLSSVRSIIGSARSLGIRVVKDL SSEELAA
 FQKERAIFLAAQKEADLAAQEAAKK

TRTRPLEQKLI SEEDLAANDILDYKDDDDKV

Chromatograms: https://cdn.origene.com/chromatograms/ja1448_b12.zip



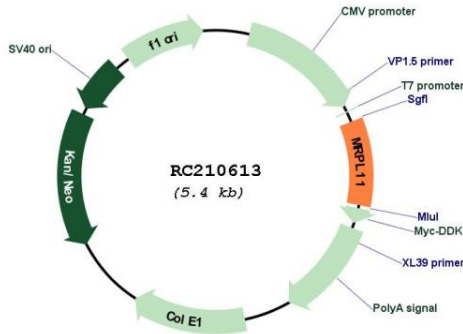
[View online »](#)

Cytogenetics: 11q13.2

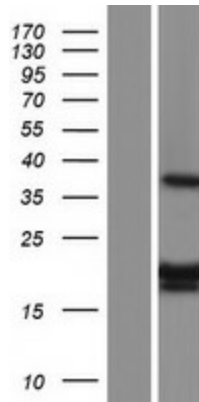
MW: 18 kDa

Gene Summary: This nuclear gene encodes a 39S subunit component of the mitochondrial ribosome. Alternative splicing results in multiple transcript variants. Pseudogenes for this gene are found on chromosomes 5 and 12. [provided by RefSeq, May 2014]

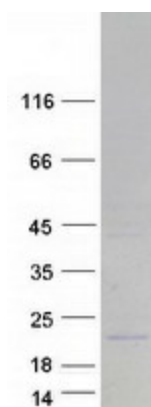
Product images:



Circular map for RC210613



Western blot validation of overexpression lysate (Cat# [LY406858]) using anti-DDK antibody (Cat# [TA50011-100]). Left: Cell lysates from untransfected HEK293T cells; Right: Cell lysates from HEK293T cells transfected with RC210613 using transfection reagent MegaTran 2.0 (Cat# [TT210002]).



Coomassie blue staining of purified MRPL11 protein (Cat# [TP310613]). The protein was produced from HEK293T cells transfected with MRPL11 cDNA clone (Cat# RC210613) using MegaTran 2.0 (Cat# [TT210002]).