

Product datasheet for **RC210450**

IL15RA (NM_172200) Human Tagged ORF Clone

Product data:

Product Type:	Expression Plasmids
Product Name:	IL15RA (NM_172200) Human Tagged ORF Clone
Tag:	Myc-DDK
Symbol:	IL15RA
Synonyms:	CD215
Mammalian Cell Selection:	Neomycin
Vector:	pCMV6-Entry (PS100001)
E. coli Selection:	Kanamycin (25 ug/mL)
ORF Nucleotide Sequence:	>RC210450 ORF sequence Red=Cloning site Blue=ORF Green=Tags(s)

TTTTGTAATACGACTCACTATAGGGCGGCCGGAATTCGTCGACTGGATCCGGTACCGAGGAGATCTGCC
GCC**CGATCGCC**

ATGTCCGTGGAACACGCAGACATCTGGGTCAAGAGCTACAGCTTGTACTCCAGGGAGCGGTACATTTGTA
ACTCTGGTTTCAAGCGTAAAGCCGGCAGCTCCAGCCTGACGGAGTGCGTGTGAACAAGGCCACGAATGT
CGCCCACTGGACAACCCCACTCAAATGCATTAGAGACCTGCCCTGGTTCACCAAAGGCCAGCGCCA
CCCTCCACAGTAACGACGGCAGGGGTGACCCACAGCCAGAGAGCCTCTCCCTTCTGAAAAGAGCCCG
CAGCTTCACTCCAGCTCAAACAACACAGCGGCCACAACAGCAGCTATTGTCCCGGGCTCCAGCTGAT
GCCTTCAAATCACCTTCCACAGGAACCACAGAGATAAGCAGTCATGAGTCTCCACGGCACCCCTCT
CAGACAACAGCCAAGACCTGGGAACTCACAGCATCCGCCTCCACAGCCGCGCAGGTGTGTATCCACAGG
GCCACAGCGACACCACTGTGGCTATCTCCACGTCCACTGTCTGTGTGGGCTGAGCGCTGTGTCTCT
CCTGGCATGTACCTCAAGTCAAGGCAAACCTCCCCGCTGGCCAGCGTTGAAATGGAAGCCATGGAGGCT
CTGCCGGTGACTTGGGGGACCAGCAGCAGAGATGAAGACTTGAAAACCTGCTCTCACCACCTA

ACGCGTACGCGGGCGCTCGAGCAGAACTCATCTCAGAAGAGGATCTGGCAGCAAATGATATCTGGATT
ACAAGGATGACGACGATAAGGTTTAA



[View online »](#)

Protein Sequence: >RC210450 protein sequence
Red=Cloning site Green=Tags(s)

MSVEHADIWVKSYSLSYRERYICNSGFKRKAGTSSSLTECVLNKATNVAHWTTPSLKCIRDPALVHQRPAP
 PSTVTTAGVTPQPESLSPSGKEPAASSPSSNNTAATTAIVPGSQLMPSKSPSTGTTEISSHESHGTPS
 QTTAKTWELTASASHQPPGVYPQGHSDTTVAISTSTVLLCGLSAVSLYLKSRQTPPLASVEMEAMEA
 LPVTWGTSSRDELDLENCSHHL

TRTRPLEQKLISEEDLAANDILDYKDDDDKV

Chromatograms: https://cdn.origene.com/chromatograms/mk6071_b09.zip

Restriction Sites: SgfI-MluI

Cloning Scheme:



ACCN: NM_172200

ORF Size: 693 bp

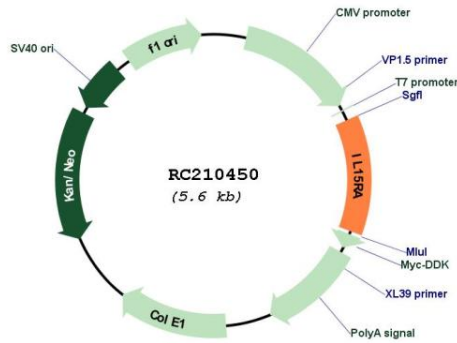
OTI Disclaimer: The molecular sequence of this clone aligns with the gene accession number as a point of reference only. However, individual transcript sequences of the same gene can differ through naturally occurring variations (e.g. polymorphisms), each with its own valid existence. This clone is substantially in agreement with the reference, but a complete review of all prevailing variants is recommended prior to use. [More info](#)

OTI Annotation: This clone was engineered to express the complete ORF with an expression tag. Expression varies depending on the nature of the gene.

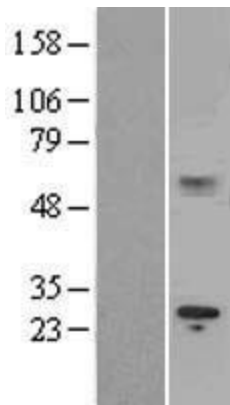
Components: The ORF clone is ion-exchange column purified and shipped in a 2D barcoded Matrix tube containing 10ug of transfection-ready, dried plasmid DNA (reconstitute with 100 ul of water).

Reconstitution Method:	<ol style="list-style-type: none">1. Centrifuge at 5,000xg for 5min.2. Carefully open the tube and add 100ul of sterile water to dissolve the DNA.3. Close the tube and incubate for 10 minutes at room temperature.4. Briefly vortex the tube and then do a quick spin (less than 5000xg) to concentrate the liquid at the bottom.5. Store the suspended plasmid at -20°C. The DNA is stable for at least one year from date of shipping when stored at -20°C.
RefSeq:	<u>NM_172200.1</u> , <u>NP_751950.1</u>
RefSeq Size:	1558 bp
RefSeq ORF:	705 bp
Locus ID:	3601
UniProt ID:	<u>Q13261</u>
Cytogenetics:	10p15.1
Protein Families:	Druggable Genome, Secreted Protein
Protein Pathways:	Cytokine-cytokine receptor interaction, Jak-STAT signaling pathway
MW:	24.4 kDa
Gene Summary:	<p>This gene encodes a cytokine receptor that specifically binds interleukin 15 (IL15) with high affinity. The receptors of IL15 and IL2 share two subunits, IL2R beta and IL2R gamma. This forms the basis of many overlapping biological activities of IL15 and IL2. The protein encoded by this gene is structurally related to IL2R alpha, an additional IL2-specific alpha subunit necessary for high affinity IL2 binding. Unlike IL2RA, IL15RA is capable of binding IL15 with high affinity independent of other subunits, which suggests distinct roles between IL15 and IL2. This receptor is reported to enhance cell proliferation and expression of apoptosis inhibitor BCL2L1/BCL2-XL and BCL2. Multiple alternatively spliced transcript variants of this gene have been reported.[provided by RefSeq, Apr 2010]</p>

Product images:



Circular map for RC210450



Western blot validation of overexpression lysate (Cat# [LY403535]) using anti-DDK antibody (Cat# [TA50011-100]). Left: Cell lysates from untransfected HEK293T cells; Right: Cell lysates from HEK293T cells transfected with RC210450 using transfection reagent MegaTran 2.0 (Cat# [TT210002]).