

## Product datasheet for RC210377

### CHST6 (NM\_021615) Human Tagged ORF Clone

#### Product data:

Product Type:	Expression Plasmids
Product Name:	CHST6 (NM_021615) Human Tagged ORF Clone
Tag:	Myc-DDK
Symbol:	CHST6
Synonyms:	C-GlcNAc6ST; glcNAc6ST-5; gn6st-5; GST4-beta; hCGn6ST; MCDC1
Mammalian Cell Selection:	Neomycin
Vector:	pCMV6-Entry (PS100001)
E. coli Selection:	Kanamycin (25 ug/mL)
ORF Nucleotide Sequence:	>RC210377 ORF sequence Red=Cloning site Blue=ORF Green=Tags(s)

TTTTGTAATACGACTCACTATAGGGCGGCCGGAATTCGTCGACTGGATCCGGTACCGAGGAGATCTGCC  
GCC**CGATCGCC**

ATGTGGCTGCCGCGCTCCAGCACAGCAGTGACCGCGCTCCTCTGGCGCAGACCTTCTCTCTCT  
TTCTGGTTCCCGGCCAGGGCCCTCGTCCCAGCAGGCGCGAGGCGCGTGCATGTGCTGGTGTCT  
CTCGTGGCGCTCGGGCTCGTCTTCGTGGGCCAACTTCAACCAGCACCCCGACGTCTTCTACCTAATG  
GAGCCCGCTGGCACGTGTGGACCACCTGTGCGAGGCGAGCCGCAACGCTGCACATGGCTGTGCGCG  
ACCTGGTGGCTCCGTCTTCTGTGCGACATGGACGTGTTTGATGCCTATCTGCCTTGGCGCCGCAACCT  
GTCCGACCTTCCAGTGGGCCGTGAGCCGTGACTGTGCTCGCCACCCGCTGCAGTGCCTTCCCGCA  
GGCGCCATCAGCAGCGAGGCCGTGTGCAAGCACTGTGCGCGCGGAGTCCCTCACCCCTGGCCCGGAGG  
CCTGCCGCTCTACAGCCACGTGGTGTCAAGGAGGTGCGCTTCTCAACCTGCAGGTGCTTACCCGCT  
GCTCAGCGACCCCGCTCAACCTACGCATCGTGACCTGGTGGCGGACCCCGGGCCGTGCTGCGCTCC  
CGGAGCAGACAGCAAGGCTCTGGCGGTGACAACGGCATCGTGTGGGACCAACGGCACGTGGGTGG  
AGGCCGACCCCGCTGCGCGTGGTGGCGAGGTGTGCCGTAGCCACGTACGCATCGCCGAGGCCGCCAC  
ACTCAAGCCGCCACCCTTCTGCGCGCCGCTACCGCTGGTGGCTTCAGTCTCACGCCACAGCTCGAGGCTGGATCC  
CTGGCAGAAATCCGTGCGCTCTACGCTTCACTGGGCTCAGTCTCACGCCACAGCTCGAGGCTGGATCC  
ATAACATCACCCACGGATCTGGACCTGGTGGCGCCGCAAGCCTTCAAGACTTCGTCCAGGAATGCGCT  
CAACGTCTCCAGGCTGGCGCCATGCGTGCCTTTGCCAAGATCCGCCGCTGCAAGAACTGTGCGCT  
GGTGGCTGCAGCTGCTGGGCTACCGCCTGTGTACTCTGAGGACGAGCAGCGCAACCTCGCCCTTGATC  
TGGTGGTCCACGAGGCTGAACGGCTTCACTGGGCATCATCCACCGCTCGCACCCCGAAAT

**ACGGT**ACGGGCCGCTCGAGCAGAACTCATCTCAGAAGAGGATCTGGCAGCAATGATATCTGGATT  
ACAAGGATGACGACGATAAGGTTTAA



[View online »](#)



**Reconstitution Method:**

1. Centrifuge at 5,000xg for 5min.
2. Carefully open the tube and add 100ul of sterile water to dissolve the DNA.
3. Close the tube and incubate for 10 minutes at room temperature.
4. Briefly vortex the tube and then do a quick spin (less than 5000xg) to concentrate the liquid at the bottom.
5. Store the suspended plasmid at -20°C. The DNA is stable for at least one year from date of shipping when stored at -20°C.

**RefSeq:** [NM\\_021615.5](#)

**RefSeq Size:** 6885 bp

**RefSeq ORF:** 1188 bp

**Locus ID:** 4166

**UniProt ID:** [Q9GZX3](#)

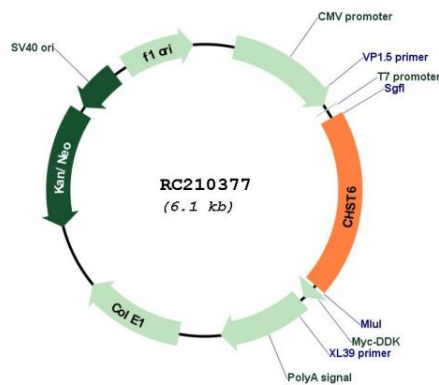
**Cytogenetics:** 16q23.1

**Protein Pathways:** Keratan sulfate biosynthesis, Metabolic pathways

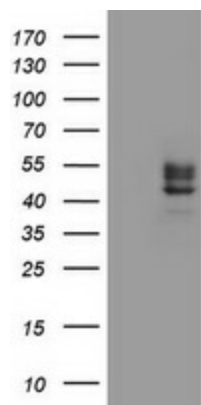
**MW:** 44.1 kDa

**Gene Summary:** The protein encoded by this gene is an enzyme that catalyzes the transfer of a sulfate group to the GlcNAc residues of keratan. Keratan sulfate helps maintain corneal transparency. Defects in this gene are a cause of macular corneal dystrophy (MCD). [provided by RefSeq, Jan 2010]

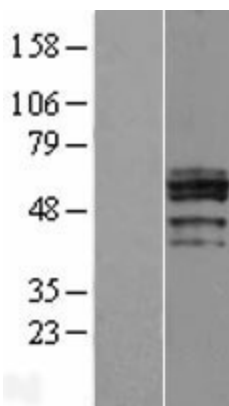
## Product images:



Circular map for RC210377



HEK293T cells were transfected with the pCMV6-ENTRY control (Cat# [PS100001], Left lane) or pCMV6-ENTRY CHST6 (Cat# RC210377, Right lane) cDNA for 48 hrs and lysed. Equivalent amounts of cell lysates (5 ug per lane) were separated by SDS-PAGE and immunoblotted with anti-CHST6 (Cat# [TA800544]). Positive lysates [LY411969] (100ug) and [LC411969] (20ug) can be purchased separately from OriGene.



Western blot validation of overexpression lysate (Cat# [LY411969]) using anti-DDK antibody (Cat# [TA50011-100]). Left: Cell lysates from untransfected HEK293T cells; Right: Cell lysates from HEK293T cells transfected with RC210377 using transfection reagent MegaTran 2.0 (Cat# [TT210002]).