

Product datasheet for RC210245

Macrophage Inflammatory Protein 4 (CCL18) (NM_002988) Human Tagged ORF Clone

Product data:

Product Type: Expression Plasmids
Product Name: Macrophage Inflammatory Protein 4 (CCL18) (NM_002988) Human Tagged ORF Clone
Tag: Myc-DDK
Symbol: Macrophage Inflammatory Protein 4
Synonyms: AMAC-1; AMAC1; CKb7; DC-CK1; DCCK1; MIP-4; PARC; SCYA18
Mammalian Cell Selection: Neomycin
Vector: pCMV6-Entry (PS100001)
E. coli Selection: Kanamycin (25 ug/mL)
ORF Nucleotide Sequence: >RC210245 ORF sequence
Red=Cloning site Blue=ORF Green=Tags(s)

TTTTGTAATACGACTCACTATAGGGCGGCCGGAATTCGTCGACTGGATCCGGTACCGAGGAGATCTGCC
GCC**CGATCGCC**

ATGAAGGGCCTTGCGAGCTGCCCTCCTTGTCTCGTCTGCACCATGGCCCTCTGCTCCTGTGCACAAGTTG
GTACCAACAAAGAGCTCTGCTGCCTCGTCTATACCTCCTGGCAGATCCACAAAAGTTCATAGTTGACTA
TTCTGAAACCAGCCCCAGTCCCAAGCCAGGTGTCATCCTCCTAACCAAGAGAGGCCGGCAGATCTGT
GCTGACCCCAATAAGAAGTGGTCCAGAAATACATCAGCGACCTGAAGCTGAATGCC

ACGCGTACGCGGCCGCTCGAGCAGAAACTCATCTCAGAAGAGGATCTGGCAGCAAATGATATCCTGGATT
ACAAGGATGACGACGATAAGGTTTAA

Protein Sequence: >RC210245 protein sequence
Red=Cloning site Green=Tags(s)
MKGLAAALLVLVCTMALCSCAQVGTNKLCLLVYTSWQIPQKFIVDYSETSPQCPKPGVILLTKRGRQIC
ADPNKKWVQKYISDLKLNA

TRTRPLEQKLISEEDLAANDILDYKDDDDKV

Chromatograms: https://cdn.origene.com/chromatograms/mk6376_a01.zip

Restriction Sites: SgfI-MluI



[View online »](#)

Cloning Scheme:


ACCN: NM_002988

ORF Size: 267 bp

OTI Disclaimer: The molecular sequence of this clone aligns with the gene accession number as a point of reference only. However, individual transcript sequences of the same gene can differ through naturally occurring variations (e.g. polymorphisms), each with its own valid existence. This clone is substantially in agreement with the reference, but a complete review of all prevailing variants is recommended prior to use. [More info](#)

OTI Annotation: This clone was engineered to express the complete ORF with an expression tag. Expression varies depending on the nature of the gene.

Components: The ORF clone is ion-exchange column purified and shipped in a 2D barcoded Matrix tube containing 10ug of transfection-ready, dried plasmid DNA (reconstitute with 100 ul of water).

Reconstitution Method:

1. Centrifuge at 5,000xg for 5min.
2. Carefully open the tube and add 100ul of sterile water to dissolve the DNA.
3. Close the tube and incubate for 10 minutes at room temperature.
4. Briefly vortex the tube and then do a quick spin (less than 5000xg) to concentrate the liquid at the bottom.
5. Store the suspended plasmid at -20°C. The DNA is stable for at least one year from date of shipping when stored at -20°C.

RefSeq: [NM_002988.4](#)

RefSeq Size: 798 bp

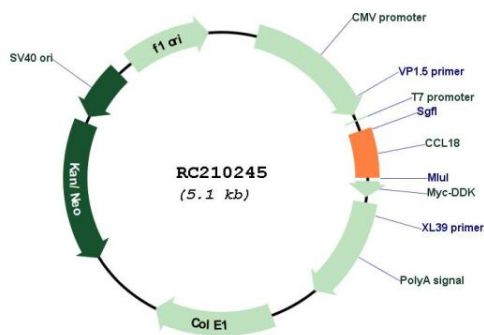
RefSeq ORF: 270 bp

Locus ID: 6362

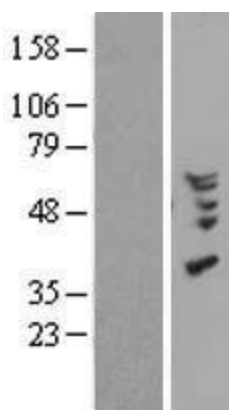
UniProt ID: [P55774](#)
Cytogenetics: 17q12
Protein Families: Druggable Genome, Secreted Protein
Protein Pathways: Chemokine signaling pathway, Cytokine-cytokine receptor interaction
MW: 9.8 kDa

Gene Summary: This antimicrobial gene is one of several Cys-Cys (CC) cytokine genes clustered on the q arm of chromosome 17. Cytokines are a family of secreted proteins involved in immunoregulatory and inflammatory processes. The CC cytokines are proteins characterized by two adjacent cysteines. The cytokine encoded by this gene displays chemotactic activity for naive T cells, CD4+ and CD8+ T cells and nonactivated lymphocytes, but not for monocytes or granulocytes. This chemokine attracts naive T lymphocytes toward dendritic cells and activated macrophages in lymph nodes. It may play a role in both humoral and cell-mediated immunity responses. [provided by RefSeq, Sep 2014]

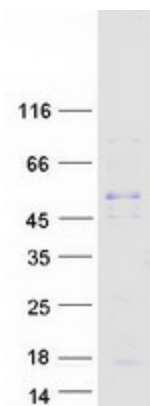
Product images:



Circular map for RC210245



Western blot validation of overexpression lysate (Cat# [LY418972]) using anti-DDK antibody (Cat# [TA50011-100]). Left: Cell lysates from untransfected HEK293T cells; Right: Cell lysates from HEK293T cells transfected with RC210245 using transfection reagent MegaTran 2.0 (Cat# [TT210002]).



Coomassie blue staining of purified CCL18 protein (Cat# [TP310245]). The protein was produced from HEK293T cells transfected with CCL18 cDNA clone (Cat# RC210245) using MegaTran 2.0 (Cat# [TT210002]).