

Product datasheet for **RC210143**

Mannan Binding Lectin (MBL2) (NM_000242) Human Tagged ORF Clone

Product data:

Product Type:	Expression Plasmids
Product Name:	Mannan Binding Lectin (MBL2) (NM_000242) Human Tagged ORF Clone
Tag:	Myc-DDK
Symbol:	Mannan Binding Lectin
Synonyms:	COLEC1; HSMBPC; MBL; MBL2D; MBP; MBP-C; MBP1; MBPD
Mammalian Cell Selection:	Neomycin
Vector:	pCMV6-Entry (PS100001)
E. coli Selection:	Kanamycin (25 ug/mL)
ORF Nucleotide Sequence:	>RC210143 ORF sequence Red=Cloning site Blue=ORF Green=Tags(s)

TTTTGTAATACGACTCACTATAGGGCGCCGGGAATTCGTCGACTGGATCCGGTACCGAGGAGATCTGCC
GCC**CGATCGCC**

ATGTCCCTGTTTCCATCACTCCCTCTCCTTCTCCTGAGTATGGTGGCAGCGTCTTACTCAGAACTGTGA
CCTGTGAGGATGCCAAAAGACCTGCCCTGCAGTGATTGCCTGTAGCTCTCCAGGCATCAACGGCTTCCC
AGGCAAAGATGGGCGTGATGGCACCAAGGGAGAAAAGGGGAACCAGGCCAAGGGCTCAGAGGCTTACAG
GGCCCCCTGGAAAGTTGGGCTCCAGGAAATCCAGGGCCTTCTGGTCAACAGGACCAAAGGGCCAAA
AAGGAGACCTGGAAAAAGTCCGGATGGTGATAGTAGCCTGGCTGCCTCAGAAAGAAAAGCTCTGCAAAC
AGAAATGGCACGTATCAAAAAGTGGCTCACCTTCTCTCTGGGCAACAAGTTGGGAACAAGTTCTTCTCTG
ACCAATGGTGAATAATGACCTTTGAAAAAGTGAAGGCCTTGTGTGTCAAGTTCCAGGCCTCTGTGGCCA
CCCCAGGAATGCTGCAGAGAATGGAGCCATTCAGAATCTCATCAAGGAGGAAGCCTTCTGGGCATCAC
TGATGAGAAGACAGAAGGGCAGTTTGTGGATCTGACAGGAAATAGACTGACCTACACAACTGGAACGAG
GGTGAACCAACAATGCTGGTTCTGATGAAGATTGTGTATTGCTACTGAAAAATGGCCAGTGAATGACG
TCCCTGCTCCACCTCCCATCTGGCCGTCTGTGAGTTCCTATC

ACGCGTACGCGGCCGCTCGAGCAGAACTCATCTCAGAAGAGGATCTGGCAGCAAATGATATCTGGATT
ACAAGGATGACGACGATAAGGTTTAA



[View online »](#)

Protein Sequence: >RC210143 protein sequence
Red=Cloning site Green=Tags(s)

MSLFPSLPLLLL SMVAASYSETVTCEDAQKTCPAVIACSSPGINGFPKGDGRDGTKGEKGEPEGQLRGLQ
 GPPGKLGPPGNP GSPGSPGPKGQKGDGPKSPDGDSSLAASERKALQTEMARIKKWTFSLGKQVGNKFLL
 TNGEIMTFEKVKALCVKFQASVATPRNAAENGAIQNLIKEEAFLGITDEKTEGQFVDLTGNRLTYTNWNE
 GEPNAGSDEDCVLLLLKNGQWNVPCSTSHLAVCEFPFI

TRTRPLEQKLISEEDLAANDILDYKDDDDKV

Chromatograms: https://cdn.origene.com/chromatograms/mk6267_h08.zip

Restriction Sites: SgfI-MluI

Cloning Scheme:



ACCN: NM_000242

ORF Size: 744 bp

OTI Disclaimer: The molecular sequence of this clone aligns with the gene accession number as a point of reference only. However, individual transcript sequences of the same gene can differ through naturally occurring variations (e.g. polymorphisms), each with its own valid existence. This clone is substantially in agreement with the reference, but a complete review of all prevailing variants is recommended prior to use. [More info](#)

OTI Annotation: This clone was engineered to express the complete ORF with an expression tag. Expression varies depending on the nature of the gene.

Components: The ORF clone is ion-exchange column purified and shipped in a 2D barcoded Matrix tube containing 10ug of transfection-ready, dried plasmid DNA (reconstitute with 100 ul of water).

Reconstitution Method:

1. Centrifuge at 5,000xg for 5min.
2. Carefully open the tube and add 100ul of sterile water to dissolve the DNA.
3. Close the tube and incubate for 10 minutes at room temperature.
4. Briefly vortex the tube and then do a quick spin (less than 5000xg) to concentrate the liquid at the bottom.
5. Store the suspended plasmid at -20°C. The DNA is stable for at least one year from date of shipping when stored at -20°C.

RefSeq: [NM_000242.3](#)

RefSeq Size: 3569 bp

RefSeq ORF: 747 bp

Locus ID: 4153

UniProt ID: [P11226](#)

Cytogenetics: 10q21.1

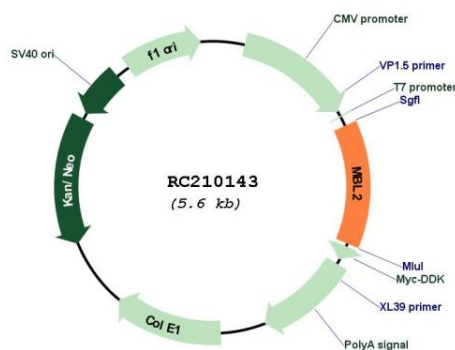
Protein Families: Druggable Genome

Protein Pathways: Complement and coagulation cascades

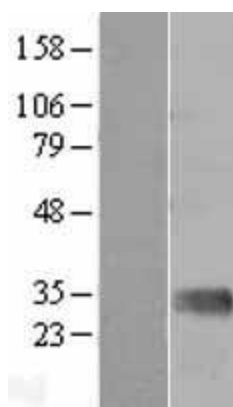
MW: 26.1 kDa

Gene Summary: This gene encodes the soluble mannose-binding lectin or mannose-binding protein found in serum. The protein encoded belongs to the collectin family and is an important element in the innate immune system. The protein recognizes and binds to mannose and N-acetylglucosamine on many microorganisms, including bacteria, yeast, and viruses including influenza virus, HIV and SARS-CoV. This binding activates the classical complement pathway. Deficiencies of this gene have been associated with susceptibility to autoimmune and infectious diseases. [provided by RefSeq, Jun 2020]

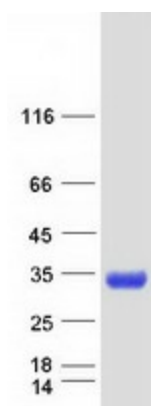
Product images:



Circular map for RC210143



Western blot validation of overexpression lysate (Cat# [LY424849]) using anti-DDK antibody (Cat# [TA50011-100]). Left: Cell lysates from untransfected HEK293T cells; Right: Cell lysates from HEK293T cells transfected with RC210143 using transfection reagent MegaTran 2.0 (Cat# [TT210002]).



Coomassie blue staining of purified MBL2 protein (Cat# [TP310143]). The protein was produced from HEK293T cells transfected with MBL2 cDNA clone (Cat# RC210143) using MegaTran 2.0 (Cat# [TT210002]).