

Product datasheet for RC210001

S100 Calcium Binding Protein A13 (S100A13) (NM_001024210) Human Tagged ORF Clone

Product data:

Product Type: Expression Plasmids
Product Name: S100 Calcium Binding Protein A13 (S100A13) (NM_001024210) Human Tagged ORF Clone
Tag: Myc-DDK
Symbol: S100 Calcium Binding Protein A13
Mammalian Cell Selection: Neomycin
Vector: pCMV6-Entry (PS100001)
E. coli Selection: Kanamycin (25 ug/mL)
ORF Nucleotide Sequence: >RC210001 ORF sequence
 Red=Cloning site Blue=ORF Green=Tags(s)

TTTTGTAATACGACTCACTATAGGGCGGCCGGAATTCGTCGACTGGATCCGGTACCGAGGAGATCTGCC
 GCC**CGATCGCC**

ATGGCAGCAGAACCCTGACAGAGCTAGAGGAGTCCATTGAGACCGTGGTCACCACCTTCTTCACCTTTG
 CAAGGCAGGAGGGCCGGAAGGATAGCCTCAGCGTCAACGAGTTCAAAGAGCTGGTTACCCAGCAGTTGCC
 CCATCTGCTCAAGGATGTGGGCTCTCTTGATGAGAAGATGAAGAGCTGGATGTGAATCAGGACTCGGAG
 CTCAAGTTCAATGAGTACTGGAGATTGATTGGGGAGCTGGCCAAGGAAATCAGGAAGAAGAAAGACCTGA
 AGATCAGGAAGAAG

ACGCGTACGCGGCCGCTCGAGCAGAACTCATCTCAGAAGAGGATCTGGCAGCAAATGATATCCTGGATT
 ACAAGGATGACGACGATAAGGTTTAA

Protein Sequence: >RC210001 protein sequence
 Red=Cloning site Green=Tags(s)

MAAEPLTELESIEYTVVTFVTFARQEGRKDSLVSNEFKELVTQQLPHLLKDVGSLDEKMKSLDVNQDSE
 LKFNEYWRLIGELAKEIRKKKDLKIRKK

TRTRPLEQKLISEEDLAANDILDYKDDDDKV

Chromatograms: https://cdn.origene.com/chromatograms/mk6547_c10.zip

Restriction Sites: Sgfl-MluI

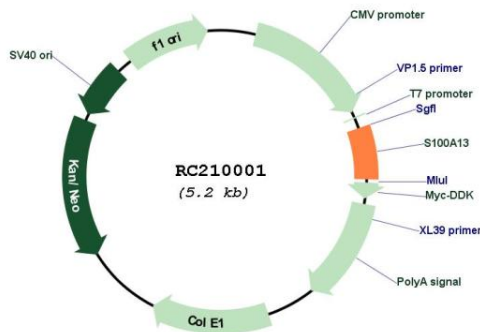


[View online »](#)

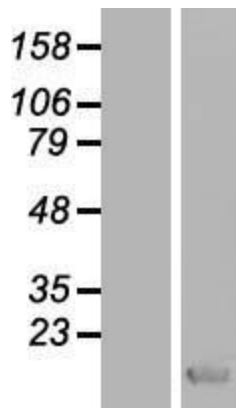
Locus ID: 6284
UniProt ID: [Q99584](#)
Cytogenetics: 1q21.3
Protein Families: Druggable Genome
MW: 11.5 kDa

Gene Summary: The protein encoded by this gene is a member of the S100 family of proteins containing 2 EF-hand calcium-binding motifs. S100 proteins are localized in the cytoplasm and/or nucleus of a wide range of cells, and involved in the regulation of a number of cellular processes such as cell cycle progression and differentiation. S100 genes include at least 13 members which are located as a cluster on chromosome 1q21. This protein is widely expressed in various types of tissues with a high expression level in thyroid gland. In smooth muscle cells, this protein co-expresses with other family members in the nucleus and in stress fibers, suggesting diverse functions in signal transduction. Multiple alternatively spliced transcript variants encoding the same protein have been found for this gene. [provided by RefSeq, Jul 2008]

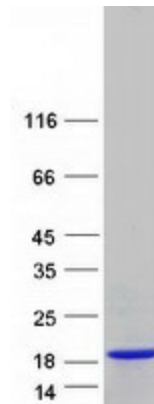
Product images:



Circular map for RC210001



Western blot validation of overexpression lysate (Cat# [LY416946]) using anti-DDK antibody (Cat# [TA50011-100]). Left: Cell lysates from untransfected HEK293T cells; Right: Cell lysates from HEK293T cells transfected with [RC222165] using transfection reagent MegaTran 2.0 (Cat# [TT210002]).



Coomassie blue staining of purified S100A13 protein (Cat# [TP310001]). The protein was produced from HEK293T cells transfected with S100A13 cDNA clone (Cat# RC210001) using MegaTran 2.0 (Cat# [TT210002]).