

## Product datasheet for RC209931L1

### SULT1A4 (NM\_001017390) Human Tagged Lenti ORF Clone

#### Product data:

Product Type:	Expression Plasmids
Product Name:	SULT1A4 (NM_001017390) Human Tagged Lenti ORF Clone
Tag:	Myc-DDK
Symbol:	SULT1A4
Synonyms:	HAST3; M-PST; ST1A3; ST1A3/ST1A4; ST1A4; STM; TL-PST
Mammalian Cell Selection:	None
Vector:	pLenti-C-Myc-DDK (PS100064)
E. coli Selection:	Chloramphenicol (34 ug/mL)
ORF Nucleotide Sequence:	The ORF insert of this clone is exactly the same as(RC209931).
Restriction Sites:	SgfI-MluI
Cloning Scheme:	

Cloning sites used for ORF Shuttling:



\* The last codon before the Stop codon of the ORF.

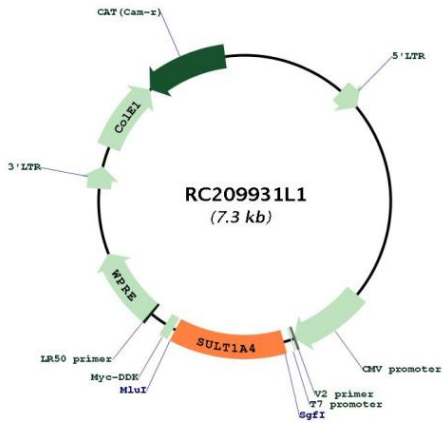
ACCN:	NM_001017390
ORF Size:	885 bp



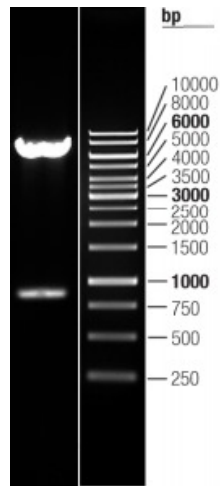
[View online >](#)

<b>OTI Disclaimer:</b>	The molecular sequence of this clone aligns with the gene accession number as a point of reference only. However, individual transcript sequences of the same gene can differ through naturally occurring variations (e.g. polymorphisms), each with its own valid existence. This clone is substantially in agreement with the reference, but a complete review of all prevailing variants is recommended prior to use. <a href="#">More info</a>
<b>OTI Annotation:</b>	This clone was engineered to express the complete ORF with an expression tag. Expression varies depending on the nature of the gene.
<b>Components:</b>	The ORF clone is ion-exchange column purified and shipped in a 2D barcoded Matrix tube containing 10ug of transfection-ready, dried plasmid DNA (reconstitute with 100 ul of water).
<b>Reconstitution Method:</b>	<ol style="list-style-type: none"><li>1. Centrifuge at 5,000xg for 5min.</li><li>2. Carefully open the tube and add 100ul of sterile water to dissolve the DNA.</li><li>3. Close the tube and incubate for 10 minutes at room temperature.</li><li>4. Briefly vortex the tube and then do a quick spin (less than 5000xg) to concentrate the liquid at the bottom.</li><li>5. Store the suspended plasmid at -20°C. The DNA is stable for at least one year from date of shipping when stored at -20°C.</li></ol>
<b>RefSeq:</b>	<a href="#">NM_001017390.1</a>
<b>RefSeq Size:</b>	1397 bp
<b>RefSeq ORF:</b>	888 bp
<b>Locus ID:</b>	445329
<b>UniProt ID:</b>	<a href="#">P50224</a>
<b>Cytogenetics:</b>	16p11.2
<b>Protein Pathways:</b>	Sulfur metabolism
<b>MW:</b>	34.2 kDa
<b>Gene Summary:</b>	Sulfotransferase enzymes catalyze the sulfate conjugation of many hormones, neurotransmitters, drugs, and xenobiotic compounds. These cytosolic enzymes are different in their tissue distributions and substrate specificities. The gene structure (number and length of exons) is similar among family members. This gene encodes a phenol sulfotransferase with thermolabile enzyme activity. Four sulfotransferase genes are located on the p arm of chromosome 16, this gene and SULT1A3 arose from a segmental duplication. Read-through transcription exists between this gene and the upstream SLX1B (SLX1 structure-specific endonuclease subunit homolog B) gene that encodes a protein containing GIY-YIG domains. [provided by RefSeq, Nov 2010]

Product images:



Circular map for RC209931L1



Double digestion of RC209931L1 using SgfI and MluI