

Product datasheet for **RC209842**

SC35 (SRSF2) (NM_003016) Human Tagged ORF Clone

Product data:

Product Type:	Expression Plasmids
Product Name:	SC35 (SRSF2) (NM_003016) Human Tagged ORF Clone
Tag:	Myc-DDK
Symbol:	SC35
Synonyms:	PR264; SC-35; SC35; SFRS2; SFRS2A; SRp30b
Mammalian Cell Selection:	Neomycin
Vector:	pCMV6-Entry (PS100001)
E. coli Selection:	Kanamycin (25 ug/mL)
ORF Nucleotide Sequence:	>RC209842 representing NM_003016 Red=Cloning site Blue=ORF Green=Tags(s)

TTTTGTAATACGACTCACTATAGGGCGGCCGGAATTCGTCGACTGGATCCGGTACCGAGGAGATCTGCC
GCC**CGATCGCC**

ATGAGCTACGGCCGCCCCCTCCCGATGTGGAGGGTATGACCTCCCTCAAGGTGGACAACCTGACCTACC
GCACCTCGCCGACACGCTGAGGCGCGTCTTCGAGAAAGTACGGGCGCGTCGGCGACGTGTACATCCCGCG
GGATCGCTACACCAAGGAGTCCCGCGGCTTCGCCTTCGTTTCGCTTTCACGACAAGCGCGACGCTGAGGAC
GCTATGGATGCCATGGACGGGGCGTGTGGACGGCCGCGAGCTGCGGGTGCAAATGGCGCGCTACGGCC
GCCCGGGGACTCACACCACAGCCGCGGGGACCGCCACCCCGAGGTACGGGGCGGTGGCTACGGACG
CCGGAGCCGACGCCCTAGGCGGGTTCGCCGACGCCGATCCCGGAGTCGGAGCCGTTCCAGGTCTCGCAGC
CGATCTCGCTACAGCCGCTCGAAGTCTCGTCCCGCACTCGTTCTCGATCTCGGTTCGACCTCCAAGTCCA
GATCCGCACGAAGGTCCAAGTCCAAGTCTCGTTCGGTCTCCAGATCTCGTTTCGGGTCCAGGTCCCGGTC
TCGGTCCAGGAGTCTCCCCAGTGTCCAAGAGGGAATCCAAATCCAGGTTCGCGATCGAAGAGTCCCCC
AAGTCTCCTGAAGAGGAAGGAGCGGTGTCTCT

ACGCGTACGCGGGCGCTCGAGCAGAACTCATCTCAGAAGAGGATCTGGCAGCAAATGATATCTGGATT
ACAAGGATGACGACGATAAGGTTTAA



[View online »](#)

Protein Sequence: >RC209842 representing NM_003016
Red=Cloning site Green=Tags(s)

```
MSYGRPPPDVEGMTSLKVDNLT YRTSPDTLRRVFEKYGRVGDVYIPRDRYTKESRGFAFVRFHDKRDAED
AMDAMDGAVLDGRELRVQMARYGRPPD SHHSRRGPPRRYGGGGYGRRSRSPRRRRRSR SRSRSRSR
RSRYSRSKSRSTRSRSRSTSKRSARRSKSKSSVSRSR SRSRSRSRSPPPVSKRESKSRSRSKSP
KSPEEEGAVSS
```

TRTRPLEQKLISEEDLAANDILDYKDDDDKV

Chromatograms: https://cdn.origene.com/chromatograms/mg4841_h09.zip

Restriction Sites: SgfI-MluI

Cloning Scheme:

Cloning sites used for ORF Shuttling:



* The last codon before the Stop codon of the ORF

ACCN: NM_003016

ORF Size: 663 bp

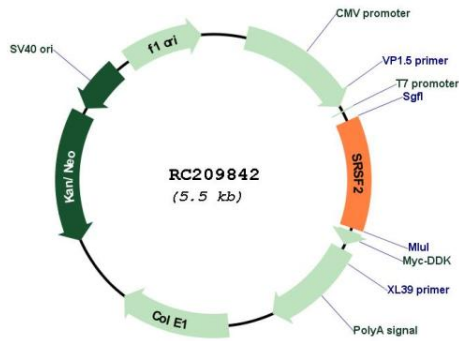
OTI Disclaimer: Due to the inherent nature of this plasmid, standard methods to replicate additional amounts of DNA in E. coli are highly likely to result in mutations and/or rearrangements. Therefore, OriGene does not guarantee the capability to replicate this plasmid DNA. Additional amounts of DNA can be purchased from OriGene with batch-specific, full-sequence verification at a reduced cost. Please contact our customer care team at custsupport@origene.com or by calling 301.340.3188 option 3 for pricing and delivery.

The molecular sequence of this clone aligns with the gene accession number as a point of reference only. However, individual transcript sequences of the same gene can differ through naturally occurring variations (e.g. polymorphisms), each with its own valid existence. This clone is substantially in agreement with the reference, but a complete review of all prevailing variants is recommended prior to use. [More info](#)

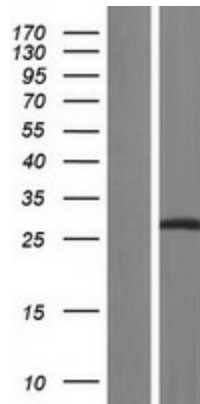
OTI Annotation: This clone was engineered to express the complete ORF with an expression tag. Expression varies depending on the nature of the gene.

Components:	The ORF clone is ion-exchange column purified and shipped in a 2D barcoded Matrix tube containing 10ug of transfection-ready, dried plasmid DNA (reconstitute with 100 ul of water).
Reconstitution Method:	<ol style="list-style-type: none">1. Centrifuge at 5,000xg for 5min.2. Carefully open the tube and add 100ul of sterile water to dissolve the DNA.3. Close the tube and incubate for 10 minutes at room temperature.4. Briefly vortex the tube and then do a quick spin (less than 5000xg) to concentrate the liquid at the bottom.5. Store the suspended plasmid at -20°C. The DNA is stable for at least one year from date of shipping when stored at -20°C.
RefSeq:	<u>NM_003016.3</u>
RefSeq Size:	2923 bp
RefSeq ORF:	666 bp
Locus ID:	6427
UniProt ID:	<u>Q01130</u>
Cytogenetics:	17q25.1
Domains:	RRM
Protein Families:	Stem cell - Pluripotency, Transcription Factors
Protein Pathways:	Spliceosome
MW:	25.3 kDa
Gene Summary:	The protein encoded by this gene is a member of the serine/arginine (SR)-rich family of pre-mRNA splicing factors, which constitute part of the spliceosome. Each of these factors contains an RNA recognition motif (RRM) for binding RNA and an RS domain for binding other proteins. The RS domain is rich in serine and arginine residues and facilitates interaction between different SR splicing factors. In addition to being critical for mRNA splicing, the SR proteins have also been shown to be involved in mRNA export from the nucleus and in translation. Two transcript variants encoding the same protein and one non-coding transcript variant have been found for this gene. In addition, a pseudogene of this gene has been found on chromosome 11. [provided by RefSeq, Sep 2010]

Product images:



Circular map for RC209842



Western blot validation of overexpression lysate (Cat# [LY418954]) using anti-DDK antibody (Cat# [TA50011-100]). Left: Cell lysates from untransfected HEK293T cells; Right: Cell lysates from HEK293T cells transfected with RC209842 using transfection reagent MegaTran 2.0 (Cat# [TT210002]).