

## Product datasheet for **RC209775**

### RPS13 (NM\_001017) Human Tagged ORF Clone

#### Product data:

**Product Type:** Expression Plasmids  
**Product Name:** RPS13 (NM\_001017) Human Tagged ORF Clone  
**Tag:** Myc-DDK  
**Symbol:** RPS13  
**Synonyms:** S13  
**Mammalian Cell Selection:** Neomycin  
**Vector:** pCMV6-Entry (PS100001)  
**E. coli Selection:** Kanamycin (25 ug/mL)  
**ORF Nucleotide Sequence:** >RC209775 representing NM\_001017  
Red=Cloning site Blue=ORF Green=Tags(s)

TTTTGTAATACGACTCACTATAGGGCGGCCGGAATTCGTCGACTGGATCCGGTACCGAGGAGATCTGCC  
GCC**CGATCGCC**

ATGGGTCGCATGCATGCTCCCGGAAGGGCCTGTCCAGTCGGCTTTACCCTATCGACGCAGCGTCCCCA  
CTTGGTTGAAGTTGACATCTGACGACGTGAAGGAGCAGATTTACAACTGGCCAAGAAGGGCCTTACTCC  
TTCACAGATCGGTGTAATCCTGAGAGATTCACATGGTGTGCACAAGTACGTTTTGTGACAGGCAATAAA  
ATTTTAAGAATTCTTAAGTCTAAGGGACTTGCTCCTGATCTTCTGAAGATCTATACCATTTAATTAAGA  
AAGCAGTTGCTGTTCGAAAGCATCTTGAGAGGAACAGAAAGGATAAGGATGCTAAATTCGTCTGATTCT  
AATAGAGAGCCGGATTCACCGTTTGGCTCGATATTATAAGACCAAGCGAGTCCTCCTCCCAATTGGAAA  
TATGAATCATCTACAGCCTCTGCCTGGTCGCA

**ACGCGT**ACGCGGCCGCTCGAGCAGAACTCATCTCAGAAGAGGATCTGGCAGCAAATGATATCCTGGATT  
ACAAGGATGACGACGATAAGGTTTAA

**Protein Sequence:** >RC209775 representing NM\_001017  
Red=Cloning site Green=Tags(s)  
MGRMHAPGKGLSQSALPYRRSVPTWLKLTSDDVKEQIYKLAKKGLTPSQIGVILRDSHGVAQVRFVTGNK  
ILRILKSKGLAPDLPEDLYHLIKKAVAVRKHLEARNRDKDAKFRLLILIESRIHRLARYYKTRVLPNWK  
YESSTASALVA

**TRTRPLEQKLI**SEEDLAANDILDYKDDDDKV

**Chromatograms:** [https://cdn.origene.com/chromatograms/ja1456\\_c09.zip](https://cdn.origene.com/chromatograms/ja1456_c09.zip)





UniProt ID: [P62277](#)

Cytogenetics: 11p15.1

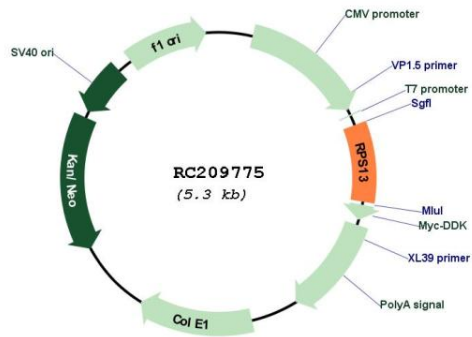
Domains: Ribosomal\_S15

Protein Pathways: Ribosome

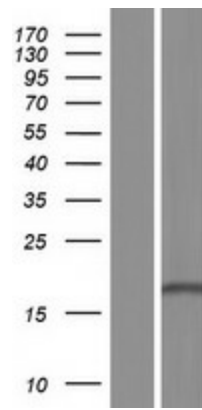
MW: 17 kDa

**Gene Summary:** Ribosomes, the organelles that catalyze protein synthesis, consist of a small 40S subunit and a large 60S subunit. Together these subunits are composed of 4 RNA species and approximately 80 structurally distinct proteins. This gene encodes a ribosomal protein that is a component of the 40S subunit. The protein belongs to the S15P family of ribosomal proteins. It is located in the cytoplasm. The protein has been shown to bind to the 5.8S rRNA in rat. The gene product of the E. coli ortholog (ribosomal protein S15) functions at early steps in ribosome assembly. This gene is co-transcribed with two U14 small nucleolar RNA genes, which are located in its third and fifth introns. As is typical for genes encoding ribosomal proteins, there are multiple processed pseudogenes of this gene dispersed through the genome. [provided by RefSeq, Jul 2008]

**Product images:**



Circular map for RC209775



Western blot validation of overexpression lysate (Cat# [LY423139]) using anti-DDK antibody (Cat# [TA50011-100]). Left: Cell lysates from untransfected HEK293T cells; Right: Cell lysates from HEK293T cells transfected with RC209775 using transfection reagent MegaTran 2.0 (Cat# [TT210002]).