

## Product datasheet for **RC209622**

### **GAB1 (NM\_207123) Human Tagged ORF Clone**

#### **Product data:**

Product Type:	Expression Plasmids
Product Name:	GAB1 (NM_207123) Human Tagged ORF Clone
Tag:	Myc-DDK
Symbol:	GAB1
Synonyms:	DFNB26
Mammalian Cell Selection:	Neomycin
Vector:	pCMV6-Entry (PS100001)
E. coli Selection:	Kanamycin (25 ug/mL)



[View online »](#)

ORF Nucleotide  
Sequence:

>RC209622 ORF sequence  
Red=Cloning site Blue=ORF Green=Tags(s)

TTTTGTAATACGACTCACTATAGGGCGGCCGGAATTCGTCGACTGGATCCGGTACCGAGGAGATCTGCC  
GCCGCGATCGCC

ATGAGCGTGGTGAAGTGGTCTGCTCCGGATGGCTCCGCAAGTCCCCCGGAGAAAAAGTTGAAGCGTT  
ATGCATGGAAGAGGAGATGGTTCGTGTTACGCAGTGGCCGTTAACTGGAGATCCAGATGTTTTGGAATA  
TTACAAAAATGATCATGCCAAGAAGCCTATTTCGATTATTGATTTAAATTTATGTCAACAAGTAGATGCT  
GGATTGACATTTAACAAAAAGAGTTTAAAAACAGCTACATTTTTGATATCAAACTATTGACCGGATTT  
TCTACTTGGTAGCAGACAGCGAGGAGAGATGAATAAGTGGGTTTCGTTGTATTTGTGACATCTGTGGTT  
TAATCCAACAGAAGAAGATCCTGTGAAGCCACCTGGCAGCTCTTACAAGCACCAGCTGATTTACCTTTA  
GCTATAAATACAGCACCACCATCCACCCAGGCAGATTCATCCTCTGCTACTCTACCTCCTCCATATCAGC  
TAATCAATGTTCCACCACACCTGAAAACCTTTGGCATTTCAGGAGGATCCTCAAGACTACCTGTTGCTCAT  
CAACTGTCAAAGCAAGAAGCCCGAACCCACCAGAACGCATGCTGATTCTGCAAAAATCCACCTCTTCTGAA  
ACAGACTGCAATGATAAGTCCCTTCTCATAAAAAATCCTGCTTCTCCAGAGCAAAATGGAATGAATG  
GCTTTTTTCAGCAGCAAAATGATATACGACTCTCCACCTTCACGTGCCCATCTGCTTCAGTTGACTCCAG  
CCTTTATAACCTGCCAGGAGTTATCCCATGATGTTTTACCAAAGGTGTCTCCATCAAGTACTGAAGCA  
GATGGAGAACTCTATGTTTTAATACCCCATCTGGGACATCGAGTGTAGAGACTCAAATGAGGCATGAT  
CTATTAGTTATGACATTCCTCCAACACCTGGTAATACTTATCAGATTCACGAACATTTCCAGAAGGAAC  
CTTGGGACAGACATCAAAGCTAGACACTATTCCAGATATTCCTCCACCTCGGCCACCGAAACCACATCCA  
GCTCATGACCGATCTCCTGTGAAACGTGTAGTATCCCACGCACCGCCTCAGACACTGACAGTAGTTACT  
GTATCCCTACAGCAGGGATGTCGCCTTCACGTAGTAATACCATTCCACTGTGGATTTAAACAAAATTGCG  
AAAAGATGCTAGTTCTCAAGACTGCTATGATATTCACGAGCATTTCCAAGTGATAGATCTAGTTCACTT  
GAAGGCTTCCATAAACACTTTAAAGTCAAAAATGTGTTGACAGTGGGAAGTGTTCAGTGAAGAAGTGG  
ATGAAAATTACGTCCCAATGAATCCCAATTCACCACCAGACAACATTCCAGCAGTTTTACAGAACCAAT  
TCAGGAAGCAAATATGTGCCAATGACTCCAGGAACATTTGATTTTTCTCATTGGAAATGCAAGTTCCT  
CCTCCTGCTCATATGGGCTTCAGGTCCAGCCAAAAACCCCTCCAGAAGGCCAGTTCTGTTGCAGACT  
GTGAACCACCCCGTGGATAGGAACCTCAAGCCAGACAGAAAAGGTCAAAGTCTAAAATTTAAGACT  
CAAACCCCATGGTTTAGAGCGAACTGATTCACAAACCATAGGTGACTTTGCTACAAGAAGAAAGGTCAAG  
CCAGCGCCTTTAGAAATAAACCTTTGCCAGAATGGGAAGAATTACAAGCCCAGTTAGATCTCCCATCA  
CTAGGAGTTTTGCTCGAGACTCTCCAGGTTTCCCATGTCCCCCGACCAGATTCAGTGCATAGCACAAC  
TTCAAGCAGTGACTCACACGACAGTGAAGAGAATTATGTTCCCATGAACCCAAACCTGTCCAGTGAAGAC  
CCAAATCTCTTTGGCAGTAACAGTCTTGATGGAGGAAGCAGCCCTATGATCAAGCCCAAAGGAGACAAAAC  
AGGTGGAATACTTAGATCTCGACTTAGATTCTGGGAAATCCACACCACCGTAAGCAAAAAGAGCAGTGG  
CTCAGGCAGCAGTGTAGCAGATGAGAGAGTGGATTATGTTGTTGTTGACCAACAGAAGACCTTGGCTCTA  
AAGAGTACCCGGGAAGCCTGGACAGATGGGAGACAGTCCACAGAATCAGAAACGCCAGCGAAGAGTGTGA  
AA

ACGCGTACGCGGCCGCTCGAGCAGAAACTCATCTCAGAAGAGGATCTGGCAGCAAATGATATCCTGGATT  
ACAAGGATGACGACGATAAGGTTTAA

**Protein Sequence:** >RC209622 protein sequence  
Red=Cloning site Green=Tags(s)

```
MSGGEVVC SGWLRKSPPEK LKRYAWKRRWFLRSGRLTGDPDVLEYYKNDHAKKPIRIIDLNLCCQQVDA
GLTFNKKEFENS YIFDINTIDRIFYL VADSEEMNKWVRCICDICGFNPTEEDPVKPPGSSLQAPADLPL
AINTAPPSTQADSSATLPPPYQLINVP HLETLGIQEDPQDYLLLLINCQSKKPEPTRHADS AKSTSSE
TDCNDNVPSHKNPASSQSKHGMNGFFQQQMIYDSPPSRAPSASVDSLLYNLPRSYSHDVLPKVSPSSTE A
DGELYVFNTPSGTSSVETQMRHVSISYDIPPTPGNTYQIPRTFPEGTLGQTSKLDLTI PDIPPPRPPKPHP
AHDRSPVETCSIPRTASDTDSSYCIPTAGMSPSR SNTISTVDLNLKRK DASSQDCYDIPRAFPSDRSSSL
EGFHNHFVKVKNLTVGSVSSEELDENYVPMNPNSPPRQHSSSFTEPIQEANYVPMTPGTDFDSSFGMQVP
PPAHMGRSSPKTPRRPVVADCEPPPVD RNLPDRKGQSPKILRLKPHGLERTDSQTIGDFATR RRVK
PAPLEIKPLPEWELQAPVRSPITRSFARDSSRFPMSPRPDSVHSTTSSSDSHDSEENYVPMNPLSSED
PNLFGNSLDGGSSPMIKPKGDKQVEYLDL DLDSGKSTPPRKQKSSGSGSVADERV DYYVVVDQQKTLAL
KSTREAWTDGRQSTESETPAKSVK
```

TRTRPLEQKLI SEEDLAANDILDYKDDDDKV

**Chromatograms:** [https://cdn.origene.com/chromatograms/mk6586\\_g06.zip](https://cdn.origene.com/chromatograms/mk6586_g06.zip)

**Restriction Sites:** Sgfl-MluI

**Cloning Scheme:**

Cloning sites used for ORF Shuttling:



\* The last codon before the Stop codon of the ORF

**ACCN:** NM\_207123

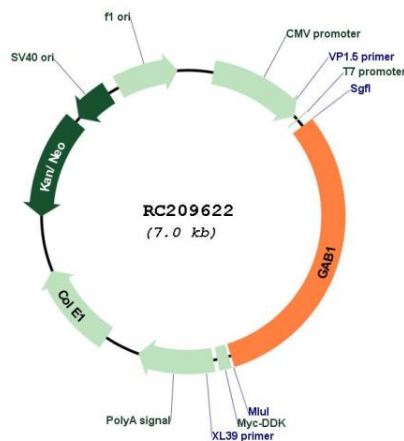
**ORF Size:** 2172 bp

**OTI Disclaimer:** The molecular sequence of this clone aligns with the gene accession number as a point of reference only. However, individual transcript sequences of the same gene can differ through naturally occurring variations (e.g. polymorphisms), each with its own valid existence. This clone is substantially in agreement with the reference, but a complete review of all prevailing variants is recommended prior to use. [More info](#)

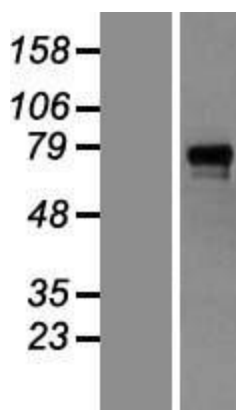
**OTI Annotation:** This clone was engineered to express the complete ORF with an expression tag. Expression varies depending on the nature of the gene.

<b>Components:</b>	The ORF clone is ion-exchange column purified and shipped in a 2D barcoded Matrix tube containing 10ug of transfection-ready, dried plasmid DNA (reconstitute with 100 ul of water).
<b>Reconstitution Method:</b>	<ol style="list-style-type: none"> <li>1. Centrifuge at 5,000xg for 5min.</li> <li>2. Carefully open the tube and add 100ul of sterile water to dissolve the DNA.</li> <li>3. Close the tube and incubate for 10 minutes at room temperature.</li> <li>4. Briefly vortex the tube and then do a quick spin (less than 5000xg) to concentrate the liquid at the bottom.</li> <li>5. Store the suspended plasmid at -20°C. The DNA is stable for at least one year from date of shipping when stored at -20°C.</li> </ol>
<b>RefSeq:</b>	<u>NM_207123.3</u>
<b>RefSeq Size:</b>	7926 bp
<b>RefSeq ORF:</b>	2175 bp
<b>Locus ID:</b>	2549
<b>UniProt ID:</b>	<u>Q13480</u>
<b>Cytogenetics:</b>	4q31.21
<b>Protein Families:</b>	Druggable Genome
<b>Protein Pathways:</b>	ErbB signaling pathway, Neurotrophin signaling pathway, Renal cell carcinoma
<b>MW:</b>	80 kDa
<b>Gene Summary:</b>	The protein encoded by this gene is a member of the IRS1-like multisubstrate docking protein family. It is an important mediator of branching tubulogenesis and plays a central role in cellular growth response, transformation and apoptosis. Two transcript variants encoding different isoforms have been found for this gene. [provided by RefSeq, Aug 2008]

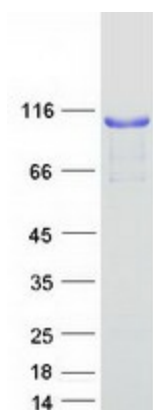
### Product images:



Circular map for RC209622



Western blot validation of overexpression lysate (Cat# [LY404056]) using anti-DDK antibody (Cat# [TA50011-100]). Left: Cell lysates from untransfected HEK293T cells; Right: Cell lysates from HEK293T cells transfected with RC209622 using transfection reagent MegaTran 2.0 (Cat# [TT210002]).



Coomassie blue staining of purified GAB1 protein (Cat# [TP309622]). The protein was produced from HEK293T cells transfected with GAB1 cDNA clone (Cat# RC209622) using MegaTran 2.0 (Cat# [TT210002]).