

## Product datasheet for **RC209568**

### CD73 (NT5E) (NM\_002526) Human Tagged ORF Clone

#### Product data:

Product Type:	Expression Plasmids
Product Name:	CD73 (NT5E) (NM_002526) Human Tagged ORF Clone
Tag:	Myc-DDK
Symbol:	CD73
Synonyms:	CALJA; CD73; E5NT; eN; eNT; NT; NT5; NTE
Mammalian Cell Selection:	Neomycin
Vector:	pCMV6-Entry (PS100001)
E. coli Selection:	Kanamycin (25 ug/mL)



[View online »](#)

**ORF Nucleotide Sequence:**

>RC209568 ORF sequence  
 Red=Cloning site Blue=ORF Green=Tags(s)

TTTTGTAATACGACTCACTATAGGGCGGCCGGGAATTCGTCGACTGGATCCGGTACCGAGGAGATCTGCC  
 GCC**GCGATCGCC**

ATGTGTCCCCGAGCCGCGGGCGCCCGGACGCTACTCCTCGCCCTGGGCGCGGTGCTGTGGCCTGCGG  
 CTGGCGCCTGGGAGCTTACGATTTTGCACACCAACGACGTGCACAGCCGGCTGGAGCAGACCAGCGAGGA  
 CTCACGAAGTGCCTCAACGCCAGCCGCTGCATGGGTGGCGTGGCTCGGCTCTTACCAAGTTCAGCAG  
 ATCCGCCGCGCCGAACCAACGTGCTGCTGCTGGACGCCGGCAGCAGTACCAGGGCACTATCTGGTTCA  
 CCGTGTACAAGGGCGCCGAGGTGGCGCACTTTCATGAACGCCCTGCGCTACGATGCCATGGCACTGGGAAA  
 TCATGAATTTGATAATGGTGTGGAAGGACTGATCGAGCCACTCCTCAAAGAGGCCAAATTTCCAATTCTG  
 AGTGCAAACATTAAGCAAAGGGGCCACTAGCATCTCAAATATCAGGACTTTATTTGCCATATAAAGTTC  
 TTCTGTGGTGTGAAGTTGTGGGAATCGTTGGATACACTTCCAAGAAAACCCCTTTCTCTCAAATCC  
 AGGGACAAATTTAGTGTTGAAGATGAAATCACTGCATTACAACCTGAAGTAGATAAGTTAAAACTCTA  
 AATGTGAACAAAATTATTGCACTGGGACATTCCGGTTTTGAAATGGATAAACTCATCGCTCAGAAAGTGA  
 GGGGTGTGGACGTCGTGGTGGGAGGACACTCCAACACATTTCTTTACACAGGCAATCCACCTTCCAAGA  
 GGTGCCTGCTGGGAAGTACCCATTTCATAGTCACCTCTGATGATGGGCGGAAGTTCTGTAGTCCAGGCC  
 TATGCTTTTGGCAAAATACCTAGGCTATCTGAAGATCGAGTTTGTGAAAGAGGAAACGTCATCTCTTCCC  
 ATGGAAATCCCATTCTTCTAAACAGCAGCATTCTGAAGATCCAAGCATAAAAAGCAGACATTAACAAATG  
 GAGGATAAAATGGATAATTATTCTACCCAGGAATTAGGGAAAACAATTGTCTATCTGGATGGCTCCTCT  
 CAATCATGCCGCTTTAGAGAATGCAACATGGGCAACCTGATTTGTGATGCAATGATTAACAACAACCTGA  
 GACACGCGGATGAAACGTTCTGGAACACGATCCATGTGCATTTAAATGGAGGTGATCCGGTCCGCC  
 CATTGATGAACGCAACAATGGCACAATTACCTGGGAGAACCTGGCTGCTGTATTGCCCTTTGGAGGCACA  
 TTTGACCTAGTCCAGTTAAAAGTTCCACCCTGAAGAAGGCCCTTTGAGCATAGCGTGCACCCTACGGCC  
 AGTCCACTGGAGAGTTCTGCAGGTGGGCGGAATCCATGTGGTGTATGATCTTTCCCGAAAACCTGGAGA  
 CAGAGTAGTCAAATTAGATGTTCTTTGCACCAAGTGTGAGTGGCCAGTTATGACCCTCTCAAAATGGAC  
 GAGGTATATAAGGTGATCCTCCAAACTTCTGGCCAATGGTGGAGATGGGTTCCAGATGATAAAAGATG  
 AATTTAAGACATGACTCTGGTGACCAAGATATCAACGTGGTTTCTACATATATCTCCAAATGAAAGT  
 AATTTATCCAGCAGTTGAAGTTCGGATCAAGTTTTCCACAGGAAGTCACTGCCATGGAAGCTTTTCTTTA  
 ATATTTCTTTCACTTTGGGCAGTGATCTTTGTTTTATACCAA

**ACGCGT**ACGCGGCCGCTCGAGCAGAAACTCATCTCAGAAGAGGATCTGGCAGCAAATGATATCCTGGATT  
 ACAAGGATGACGACGATAAGGTTTAA

**Protein Sequence:**

>RC209568 protein sequence  
 Red=Cloning site Green=Tags(s)

MCPRAARAPATLLLALGAVLWPAAGAWELTILHTNDVHSRLEQTSSESSKCVNASRCMGGVARLFTKVQQ  
 IRRRAEPNVLLEDAGDQYQGTIWFVYKGA EVAHF MNALRYDAMALGNHEFDNGVEGLIEPLLKEAKFPIL  
 SANIKAKGPLASQISGLYLPYKVLVPGDEVVIGVYTSKETPFLSNPGTNLVFEDEITALQPEVDKLT  
 NVNKIIALGHSGFEMDKLIAQKVRGVDVVGGHSNTFLYTGNNPSKEVPAGKYPIVTSDDGRKVPVQA  
 YAFGKYLGYLKIEFDERGNVISSHGNPILLNSSIPEDPSIKADINKWRIKLDNYSTQELGKTIVYLDGSS  
 QSCRFRFCNMGNLICDAMINNNLRHADETFWNHVSMLNNGGIRSPIDERNGITWENLAAVLPFGGT  
 FDLVQLKGSTLKKAFEHVHRYGQSTGEFLQVGGIHVVYDL SRKPGDRVVKLDVLTCKCRVPSYDPLKMD  
 EVYKVI LPNFLANGGDGFQMIKDELLRHDSGDQDINVVSTYISKMKVIYPAVEGRIFKSTGSHCHGSFSL  
 IFLSLWAVIFVLYQ

**TR**TRPLEQKLISEEDLAANDILDYKDDDDKV

**Chromatograms:**

[https://cdn.origene.com/chromatograms/mk6227\\_h04.zip](https://cdn.origene.com/chromatograms/mk6227_h04.zip)

**Restriction Sites:**

Sgfl-Mlul

**Cloning Scheme:**


**ACCN:** NM\_002526

**ORF Size:** 1722 bp

**OTI Disclaimer:** Due to the inherent nature of this plasmid, standard methods to replicate additional amounts of DNA in E. coli are highly likely to result in mutations and/or rearrangements. Therefore, OriGene does not guarantee the capability to replicate this plasmid DNA. Additional amounts of DNA can be purchased from OriGene with batch-specific, full-sequence verification at a reduced cost. Please contact our customer care team at [custsupport@origene.com](mailto:custsupport@origene.com) or by calling 301.340.3188 option 3 for pricing and delivery.

The molecular sequence of this clone aligns with the gene accession number as a point of reference only. However, individual transcript sequences of the same gene can differ through naturally occurring variations (e.g. polymorphisms), each with its own valid existence. This clone is substantially in agreement with the reference, but a complete review of all prevailing variants is recommended prior to use. [More info](#)

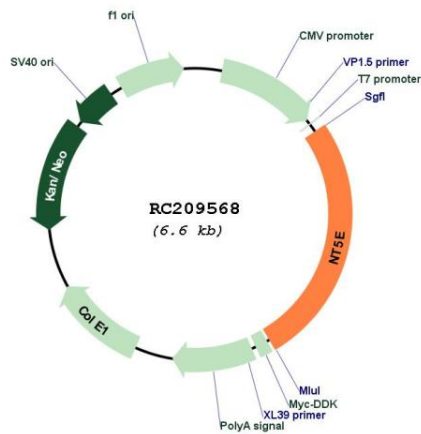
**OTI Annotation:** This clone was engineered to express the complete ORF with an expression tag. Expression varies depending on the nature of the gene.

**Components:** The ORF clone is ion-exchange column purified and shipped in a 2D barcoded Matrix tube containing 10ug of transfection-ready, dried plasmid DNA (reconstitute with 100 ul of water).

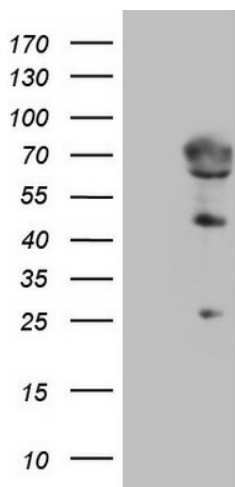
- Reconstitution Method:**
1. Centrifuge at 5,000xg for 5min.
  2. Carefully open the tube and add 100ul of sterile water to dissolve the DNA.
  3. Close the tube and incubate for 10 minutes at room temperature.
  4. Briefly vortex the tube and then do a quick spin (less than 5000xg) to concentrate the liquid at the bottom.
  5. Store the suspended plasmid at -20°C. The DNA is stable for at least one year from date of shipping when stored at -20°C.

**RefSeq:** [NM\\_002526.4](#)  
**RefSeq Size:** 4086 bp  
**RefSeq ORF:** 1725 bp  
**Locus ID:** 4907  
**UniProt ID:** [P21589](#)  
**Cytogenetics:** 6q14.3  
**Domains:** Metallophos, 5\_nucleotidaseC  
**Protein Families:** ES Cell Differentiation/IPS, Transmembrane  
**Protein Pathways:** Metabolic pathways, Nicotinate and nicotinamide metabolism, Purine metabolism, Pyrimidine metabolism  
**MW:** 63.3 kDa  
**Gene Summary:** The protein encoded by this gene is a plasma membrane protein that catalyzes the conversion of extracellular nucleotides to membrane-permeable nucleosides. The encoded protein is used as a determinant of lymphocyte differentiation. Defects in this gene can lead to the calcification of joints and arteries. Two transcript variants encoding different isoforms have been found for this gene.[provided by RefSeq, Mar 2011]

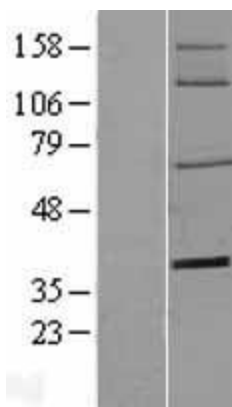
**Product images:**



Circular map for RC209568



HEK293T cells were transfected with the pCMV6-ENTRY control (Cat# [PS100001], Left lane) or pCMV6-ENTRY NT5E (Cat# RC209568, Right lane) cDNA for 48 hrs and lysed. Equivalent amounts of cell lysates (5 ug per lane) were separated by SDS-PAGE and immunoblotted with anti-NT5E (Cat# [TA809085])(1:2000). Positive lysates [LY419270] (100ug) and [LC419270] (20ug) can be purchased separately from OriGene.



Western blot validation of overexpression lysate (Cat# [LY419270]) using anti-DDK antibody (Cat# [TA50011-100]). Left: Cell lysates from untransfected HEK293T cells; Right: Cell lysates from HEK293T cells transfected with RC209568 using transfection reagent MegaTran 2.0 (Cat# [TT210002]).