

Product datasheet for **RC209511**

RAB22A (NM_020673) Human Tagged ORF Clone

Product data:

Product Type: Expression Plasmids
Product Name: RAB22A (NM_020673) Human Tagged ORF Clone
Tag: Myc-DDK
Symbol: RAB22A
Mammalian Cell Selection: Neomycin
Vector: pCMV6-Entry (PS100001)
E. coli Selection: Kanamycin (25 ug/mL)
ORF Nucleotide Sequence: >RC209511 ORF sequence
Red=Cloning site Blue=ORF Green=Tags(s)

TTTTGTAATACGACTCACTATAGGGCGGCCGGAATTCGTCGACTGGATCCGGTACCGAGGAGATCTGCC
GCC**CGATCGCC**

ATGGCGCTGAGGGAGCTCAAAGTGTGTCTGCTCGGGGATACAGGTGTAGGTAAATCGAGTATTGTGTGGC
GGTTTGTGGAAGACAGTTTTGATCCAAACATCAACCAACAATAGGGGCATCTTTTATGACCAAGACTGT
CCAGTACCAAAATGAGCTACATAAATTCCTAATCTGGGATACAGCTGGACAAGAACGATTCGTGCCTTA
GCACCAATGTACTATCGAGGGTCGGCTGCAGCTATAATCGTTTATGATATCACAAAAGAAGAGACATTTT
CAACATTAAGAATTGGGTGAAAGAGCTTCGACAGCATGGCCACCTAATATTGTAGTTGCCATTGCAGG
AAATAAATGTGATCTTATCGATGTAAGAGAAGTTCATGGAGAGAGATGCAAAGGACTACGCCGACTCTATT
CATGCAATTTTTGTAGAGACCAGCGCAAAAAACGCGATAAACATAAATGAACTCTTTATAGAAATTAGTC
GAAGAATTCATCCACTGACGCCAACCTGCCATCTGGCGTAAGGGCTTCAAACCTCCGAAGACAGCCTTC
AGAGCCAAAGCGGAGCTGCTGC

ACGCGTACGCGGCCGCTCGAGCAGAAACTCATCTCAGAAGAGGATCTGGCAGCAATGATATCCTGGATT
ACAAGGATGACGACGATAAGGTTTAA

Protein Sequence: >RC209511 protein sequence
Red=Cloning site Green=Tags(s)

MALRELKVLLGDTGVGKSSIVWRFVEDSFDPNINPTIGASFMTKTVQYQNELHKFLIWDTAGQERFRAL
APMYRGSAAAIIVYDITKEETFSTLKNWVKELRQHGPPIVVAIAGNKCDLIDVREVMERDAKDYADSI
HAIFVETSAKNAININELFIEISRIPSTDANLPSGGKGFKLRRQPSEPKRSCC

TRTRPLEQKLISEEDLAANDILDYKDDDDKV

Chromatograms: https://cdn.origene.com/chromatograms/mk6127_f06.zip



[View online »](#)

Restriction Sites: SgfI-MluI

Cloning Scheme:



ACCN: NM_020673

ORF Size: 582 bp

OTI Disclaimer: The molecular sequence of this clone aligns with the gene accession number as a point of reference only. However, individual transcript sequences of the same gene can differ through naturally occurring variations (e.g. polymorphisms), each with its own valid existence. This clone is substantially in agreement with the reference, but a complete review of all prevailing variants is recommended prior to use. [More info](#)

OTI Annotation: This clone was engineered to express the complete ORF with an expression tag. Expression varies depending on the nature of the gene.

Components: The ORF clone is ion-exchange column purified and shipped in a 2D barcoded Matrix tube containing 10ug of transfection-ready, dried plasmid DNA (reconstitute with 100 ul of water).

- Reconstitution Method:
1. Centrifuge at 5,000xg for 5min.
 2. Carefully open the tube and add 100ul of sterile water to dissolve the DNA.
 3. Close the tube and incubate for 10 minutes at room temperature.
 4. Briefly vortex the tube and then do a quick spin (less than 5000xg) to concentrate the liquid at the bottom.
 5. Store the suspended plasmid at -20°C. The DNA is stable for at least one year from date of shipping when stored at -20°C.

RefSeq: [NM_020673.3](#)

RefSeq Size: 8702 bp

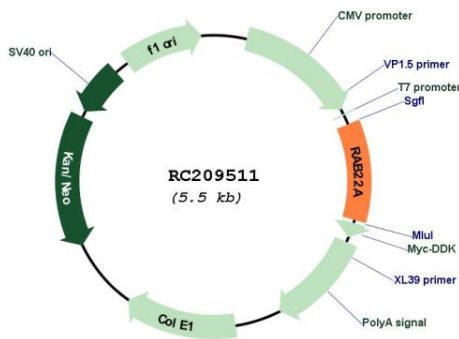
RefSeq ORF: 585 bp

Locus ID: 57403

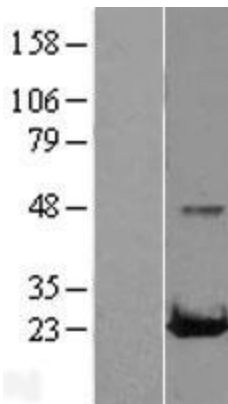
UniProt ID: [Q9UL26](#)

Cytogenetics: 20q13.32
Domains: ras, RAN, RAS, RHO, RAB
Protein Families: Druggable Genome
Protein Pathways: Endocytosis
MW: 21.9 kDa
Gene Summary: The protein encoded by this gene is a member of the RAB family of small GTPases. The GTP-bound form of the encoded protein has been shown to interact with early-endosomal antigen 1, and may be involved in the trafficking of and interaction between endosomal compartments. [provided by RefSeq, Jul 2008]

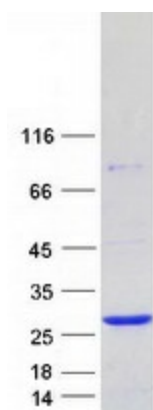
Product images:



Circular map for RC209511



Western blot validation of overexpression lysate (Cat# [LY402804]) using anti-DDK antibody (Cat# [TA50011-100]). Left: Cell lysates from untransfected HEK293T cells; Right: Cell lysates from HEK293T cells transfected with RC209511 using transfection reagent MegaTran 2.0 (Cat# [TT210002]).



Coomassie blue staining of purified RAB22A protein (Cat# [TP309511]). The protein was produced from HEK293T cells transfected with RAB22A cDNA clone (Cat# RC209511) using MegaTran 2.0 (Cat# [TT210002]).