

Product datasheet for **RC209476**

Collagen VI (COL6A2) (NM_001849) Human Tagged ORF Clone

Product data:

Product Type:	Expression Plasmids
Product Name:	Collagen VI (COL6A2) (NM_001849) Human Tagged ORF Clone
Tag:	Myc-DDK
Symbol:	Collagen VI
Synonyms:	BTHLM1; PP3610; UCMD1
Mammalian Cell Selection:	Neomycin
Vector:	pCMV6-Entry (PS100001)
E. coli Selection:	Kanamycin (25 ug/mL)
ORF Nucleotide Sequence:	>RC209476 ORF sequence Red=Cloning site Blue=ORF Green=Tags(s)

TTTTGTAATACGACTCACTATAGGGCGGCCGGAATTCGTCGACTGGATCCGGTACCGAGGAGATCTGCC
GCC**CGATCGCC**

ATGCTCCAGGGCACCTGCTCCGTGCTCCTGCTCTGGGAATCCTGGGGCCATCCAGGCCAGCAGCAGG
AGGTCATCTCGCCGACACTACCGAGAGAAACAACACTGCCAGAGAAGACCGACTGCCCATCCACGT
GTACTTCGTGCTGGACACCTCGGAGAGCGTCACCATGCAGTCCCCACGGACATCCTGCTTCCACATG
AAGCAGTTCGTGCCGAGTTCATCAGCCAGCTGCAGAACGAGTTCACCTGGACCAGGTGGCGCTGAGCT
GGCGCTACGGCGCCTGCACTTCTGACCAGGTGGAGGTGTTACGCCACCGGGCAGCGACCGGGCCTC
TTTCATCAAGAACCTGCAGGGCATCAGCTCCTTCCGCCGCGGCACCTTACCGACTGCGCGCTGGCCAAC
ATGACGGAGCAGATCCGGCAGGACCGCAGCAAGGGCACCGTCCACTTCGCGGTGGTCATACCGACGGCC
ACGTACCGCGCAGCCCCTGCGGGGGCATCAAGCTGCAGGCCGAGCGGGCCCGCAGGAGGGCATCCGGCT
CTTCGCGGTGGCCCCAACCAGAACCTGAAGGAGCAGGGCCTGCGGGACATCGCCAGCACGCCGACGAG
CTCTACCGCAACGACTACGCCACCATGCTGCCGACTCCACCGAGATCGACCAGGACACCATCAACCGCA
TCATCAAGGTATGAAACACGAAGCCTACGGAGAGTGCTACAAGGTGAGCTGCCTGGAAATCCCTGGGCC
CTCTGGCCCCAAGGGCTACCGTGGACAGAAGGGTGCCAAGGGCAACATGGGTGAGCCGGGAGAGCCTGGC
CAGAAGGGAAGACAGGGAGACCCGGGCATCGAAGGCCCATGGATTCCAGGCCAAGGGCCTTCTCTG
GCTTCAAAGGAGAGAAGGGTGAATTTGGAGCCGACGGTTCGCAAGGGGGCCCTGGCCTGGCTGGCAAGAA
CGGGACCGATGGACAGAAGGGCAAGCTGGGGCGCATCGGACCTCCTGGCTGCAAGGGAGACCCTGGAAAC
CGGGGCCCGACGGTTACCCGGGGGAAGCAGGGAGTCCAGGGGAGCGAGGAGACCAAGGCGGCAAGGGGG
ACCCTGGCCGCCAGGACGCAGAGGGCCCCGGGAGAAATCGGGGCAAGGGAAGCAAGGGGTATCAAGG
CAACAATGGAGCCCCAGGAAGTCTGGTGTGAAAGGAGCAAGGGCGGGCCTGGGCCCGCGACCCAAA
GGCGAGCCGGGGCGCAGGGGAGACCCGGCACCAAGGGCAGCCAGCGATGGCCCCAAGGGGGAGA
AGGGGGACCCTGGCCTGAGGGGCCCGGGCCTGGCTGGAGAGGTTGGCAACAAAGGAGCAAGGGAGA
CCGAGGCTTGGTGGACCGAGGCCCCAGGGAGCTCTGGGGAGCCGAAAGCAGGGATCTCGGGGA



[View online >](#)

GACCCCGGTGATGCAGGACCCCGTGGAGACTCAGGACAGCCAGGCCCAAGGGAGACCCCGGCAGGCCTG
 GATTACAGTACCCAGGACCCCGAGGAGCACCCGGAGAAAAAGGCGAGCCCGGCCACGCGCCCCGAGGG
 AGGCCGAGGCGACTTTGGCTTGAAGGAGAACCTGGGAGGAAAGGAGAGAAAGGAGAGCCTGCGGATCCT
 GGTCCCCCTGGTGGAGCCAGGCCCTCGGGGGCAAGAGGAGTCCCAGGACCCGAGGGTGGCCCGGCCCC
 CTGGAGACCCCGGTCTCACGGAGTGTGACGTATGACCTACGTGAGGGAGACCTGCGGGTGTGCGACTG
 TGAGAAGCGCTGTGGCGCCCTGGACGTGGTCTTCGTATCGACAGCTCCGAGAGCATTGGGTACACCAAC
 TTCACACTGGAGAAGAACTTCGTATCAACGTGGTCAACAGGCTGGGTGCCATCGCTAAGGACCCCAAGT
 CCGAGACAGGGACGCGTGTGGGCGTGGTGCAGTACAGCCACAGGGCACCTTTGAGGCCATCCAGCTGGA
 CGACGAACGTATCGACTCCCTGTGAGCTTCAAGGAGGCTGTCAAGAACCTCGAGTGGATTGCGGGCGGC
 ACCTGGACACCCTCAGCCCTCAAGTTTGCCTACGACCCGCTCATCAAGGAGAGCCGGCGCCAGAAGACAC
 GTGTGTTTGGGTGGTATCACGGACGGGCGCCACGACCTCGGGACGATGACCTCAACTTGGGGCGCT
 GTGCGACCCGACGTACAGTACGCGCCATCGGCATCGGGGACATGTTCCACGAGAAGCAGAGAGTGAA
 AACCTCTACTCCATCGCCTGCGACAAGCCACAGCAGGTGCGCAACATGACGCTGTTCTCCGACCTGGTGC
 CTGAGAAGTTCATCGATGACATGGAGGACGTCTCTGCCCGACCCCTCAGATCGTGTGCCAGACCTTCC
 CTGCCAAACAGAGCTGTCCGTGGCACAGTGCACGACGCGCCCGTGGACATCGTCTTCTGCTGGACGGC
 TCCGAGCGGTGGGTGAGCAGAACTCCACAAGGCCCGGCGCTTCGTGGAGCAGGTGGCGCGGGCGTGA
 CGCTGGCCCGGAGGGACGACGACCTCTCAACGCACGCGTGGCGCTGCTGCAATTTGGTGGCCCCGGCGA
 GCAGCAGGTGGCCTTCCCGCTGAGCCACAACCTCACGGCCATCCACGAGGCGCTGGAGACCACGCAATAC
 CTGAACTCCTTCTCGCACGTGGGCGCAGGCGTGGTGCACGCCATCAATGCCATCGTGCAGCCCGCGTG
 GCGGGGCCCGGAGGCACGAGAGCTGTCCTTCTGTGTTCTCACGGACGGCGTACGGGCAACGACAGTCT
 GCACGAGTCGGCGCACTCCATGCGCAAGCAGAAGTGGTACCCACCGTGTGGCCTTGGGCGAGCAGTGC
 GACATGGACGTGCTCACCAGCTCAGCCTGGGTGACCGTGCCTCGCTGTTCCACGAGAAGGACTATGACA
 GCCTGGCGCAACCCGGCTTCTTCGACCGCTTATCCGCTGGATCTGC

AGCGGACCGACGCGTACGCGGCCGCTCGAGCAGAACTCATCTCAGAAGAGGATCTGGCAGCAAATGATATCC
 TGGATTACAAGGATGACGACGATAAGGTTAA

Protein Sequence:

>RC209476 protein sequence
 Red=Cloning site Green=Tags(s)

MLQGTCSVLLWGLGAIQAQQQEVISPDTTERRNNCPEKTDPCIHVYFVLDTSSEVTMQSPDILLFHM
 KQFVFPQFISQLQNEFYLDQVALSWRYGGLHFSQVEVFSPPGSDRASFIKNLQGISFRRGTFITDCALAN
 MTEQIRQDRSKGTVHFVAVITDGHVTGSPCGGIKLQAERAREEGIRLFAVAPNQNLKEQGLRDIASPH
 LYRNDYATMLPDSTEIDQDTINRIKVMKHEAYGECYKVSCLIPGSPGPKGYRGQKGAAGNMGEPGEPG
 QKGRQDPIEGPIGFPKGVPGFKGKGFADGRKGAPLAGKNGTDGKGLGRIGPPGCKGDPGN
 RGPDPGYPGEAGSPGERGQGGKDPGRPRRPPGEIGAKGSKGYQNGGAPGSPGVKGAAGGPPRGP
 GEPGRRGDPGKSPGSDGPKGKDPGPEGPRGLAGEVGNKGAAGDRGLPGPRGPQALGEPGKQGSRG
 DPGDAGPRGDSGQPGKDPGRPGFSYGPGRGAPGKGEPEGPRGPEGGRGDFGLKGEPRGKGEKGE
 PGPGEPRGPRGVPGEPEGPPGDPGLTECDVMTYVRETCGCCDCEKRCGALDVVFVIDSSESIYTN
 FTLEKNFVINVVNRLGAIKDPKSETGTRVGVVQYSHEGTFEAIQLDDERIDSLSSFKEAVKNLEWIAAG
 TWTPSALKFAYDRLIKESRRQKTRVAVITDGRHDPDLDLNLRALCDRDTVTAIGIGDMFHEKHESE
 NLYSIACDKPQQVRNMTLFSDLVAEKFIIDMEDVLCPPDQIVCPDLPCQTELSVAQCTQRPVDFLLDG
 SERLGEQNFHKARRFVEQVARRLTLARRDDPLNARVALLQFGGPGEQQVAFPLSHNLTAIHEALETQY
 LNSFSHVAGVVHAINAIVRSPRGGARRHAELSFVFLTDGVTGNDSLHESAHSMRKQNVVPTVLALGSDV
 DMDVLTTLSLGDRAAVFHEKDYDSLAPGFFDRFIRWIC

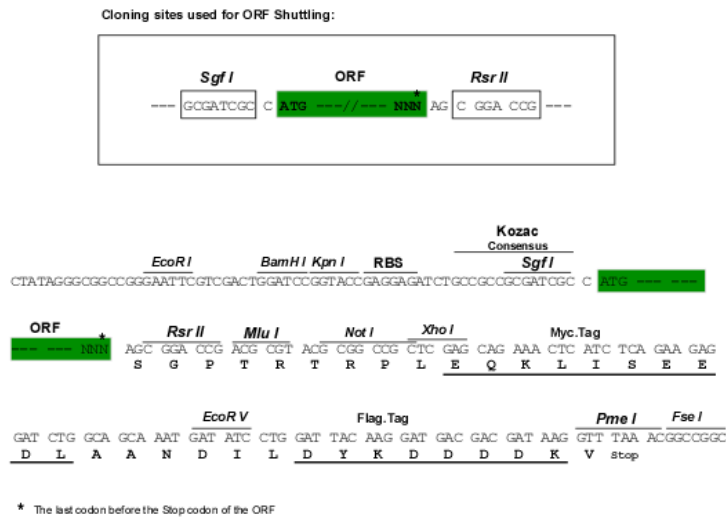
SGPTRRTRPLEQKLISEEDLAANDILDYKDDDDKV

Chromatograms:

https://cdn.origene.com/chromatograms/mk6798_f07.zip

Restriction Sites:

Sgfl-RsrII

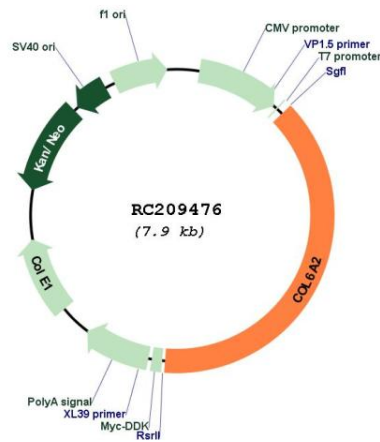
Cloning Scheme:


- ACCN:** NM_001849
- ORF Size:** 3057 bp
- OTI Disclaimer:** The molecular sequence of this clone aligns with the gene accession number as a point of reference only. However, individual transcript sequences of the same gene can differ through naturally occurring variations (e.g. polymorphisms), each with its own valid existence. This clone is substantially in agreement with the reference, but a complete review of all prevailing variants is recommended prior to use. [More info](#)
- OTI Annotation:** This clone was engineered to express the complete ORF with an expression tag. Expression varies depending on the nature of the gene.
- Components:** The ORF clone is ion-exchange column purified and shipped in a 2D barcoded Matrix tube containing 10ug of transfection-ready, dried plasmid DNA (reconstitute with 100 ul of water).
- Reconstitution Method:**
1. Centrifuge at 5,000xg for 5min.
 2. Carefully open the tube and add 100ul of sterile water to dissolve the DNA.
 3. Close the tube and incubate for 10 minutes at room temperature.
 4. Briefly vortex the tube and then do a quick spin (less than 5000xg) to concentrate the liquid at the bottom.
 5. Store the suspended plasmid at -20°C. The DNA is stable for at least one year from date of shipping when stored at -20°C.
- RefSeq:** [NM_001849.4](#)
- RefSeq Size:** 3455 bp
- RefSeq ORF:** 3060 bp
- Locus ID:** 1292

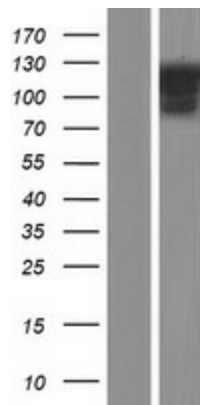
UniProt ID: [P12110](#)
Cytogenetics: 21q22.3
Protein Families: Secreted Protein
Protein Pathways: ECM-receptor interaction, Focal adhesion
MW: 108.6 kDa

Gene Summary: This gene encodes one of the three alpha chains of type VI collagen, a beaded filament collagen found in most connective tissues. The product of this gene contains several domains similar to von Willebrand Factor type A domains. These domains have been shown to bind extracellular matrix proteins, an interaction that explains the importance of this collagen in organizing matrix components. Mutations in this gene are associated with Bethlem myopathy and Ullrich scleroatonic muscular dystrophy. Three transcript variants have been identified for this gene. [provided by RefSeq, Jul 2008]

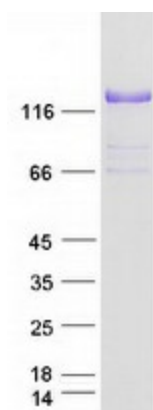
Product images:



Circular map for RC209476



Western blot validation of overexpression lysate (Cat# [LY419707]) using anti-DDK antibody (Cat# [TA50011-100]). Left: Cell lysates from untransfected HEK293T cells; Right: Cell lysates from HEK293T cells transfected with RC209476 using transfection reagent MegaTran 2.0 (Cat# [TT210002]).



Coomassie blue staining of purified COL6A2 protein (Cat# [TP309476]). The protein was produced from HEK293T cells transfected with COL6A2 cDNA clone (Cat# RC209476) using MegaTran 2.0 (Cat# [TT210002]).