

Product datasheet for **RC209451**

VEGFC (NM_005429) Human Tagged ORF Clone

Product data:

Product Type:	Expression Plasmids
Product Name:	VEGFC (NM_005429) Human Tagged ORF Clone
Tag:	Myc-DDK
Symbol:	VEGFC
Synonyms:	Flt4-L; LMPH1D; LMPHM4; VRP
Mammalian Cell Selection:	Neomycin
Vector:	pCMV6-Entry (PS100001)
E. coli Selection:	Kanamycin (25 ug/mL)
ORF Nucleotide Sequence:	>RC209451 representing NM_005429. Blue=ORF Red=Cloning site Green=Tag(s)

```
GCTCGTTTGTGAAACCGTCAGAATTTTGTAAACGACTCACTATAGGGCGCCGGGAATTCGTCGACTG
GATCCGGTACCGAGGAGATCTGCCGCCGCGATCGCC
ATGCACTTGCTGGGCTTCTCTCTGTGGCGTGTCTCTGCTCGCCGCTGCGCTGCTCCCGGGTCTCCG
GAGGCGCCCGCCGCCGCCGCCCTTCGAGTCCGGACTCGACCTCTCGGACGCGGAGCCCGACGCGGGC
GAGGCCACGGCTTATGCAAGCAAAGATCTGGAGGAGCAGTTACGGTCTGTGTCCAGTGTAGATGAACTC
ATGACTGTACTCTACCCAGAATATTGGAAAATGTACAAGTGTGAGTAAAGGAGGCTGCAACAT
AACAGAGAACAGGCCAACCTCAACTCAAGGACAGAAGAGACTATAAAATTTGCTGCAGCACATTATAAT
ACAGAGATCTTAAAAGTATTGATAATGAGTGGAGAAAGACTCAATGCATGCCACGGGAGGTGTGTATA
GATGTGGGGAAGGAGTTTGGAGTCGCGACAACACCTTCTTTAAACCTCCATGTGTGTCCGCTACAGA
TGTGGGGTGTGCAATAGTGGGGGCTGCAATGCAATGCAATGCAATGCAATGCAATGCAATGCAATGCAAT
TTATTTGAAATTACAGTGCCCTCTCTCTCAAGGCCCAAACAGTAACAATCAGTTTTGCCAATCACACT
TCCTGCCGATGCATGTCTAAACTGGATGTTTACAGACAAGTTCATTCCATTATTAGACGTTCCCTGCCA
GCAACTACTACAGTGTGAGGACGCAACAAGACCTGCCCAACCAATTACATGTGGAATAATCACATC
TGCAGATGCCTGGCTCAGGAAGATTTTATGTTTTCTCGGATGCTGGAGATGACTCAACAGATGGATTC
CATGACATCTGTGACCAAAACAAGGAGCTGGATGAAGAGACCTGTGAGTGTCTGCAGAGCGGGCTT
CGGTCTGCCAGCTGTGGACCCCAAAAGAACTAGACAGAAACTCATGCCAGTGTGTGTAAAAACAAA
CTTTCCCGCAATGTGGGGCAACCGAGAATTTGATGAAAACACATGCCAGTGTGTATGTAAGA
ACCTGCCCCAGAAATCAACCCCTAAATCTGGAAAATGTGCTGTGAATGTACAGAAAGTCCACAGAAA
TGCTTGTAAAAGGAAAGATTCCACCACCAACATGCAGCTGTTACAGACGGCCATGTACGAACCGC
CAGAAGGCTTGTGAGCCAGGATTTTCATATAGTGAAGAAGTGTGTCGTTGTGCCCTTCATATTGAAA
AGACCACAAATGAGC
ACGCGTACGCGGCCGCTCGAGCAGAAACTCATCTCAGAAGAGGATCTGGCAGCAATGATATCCTGGAT
TACAAGGATGACGACGATAAGGTTTAAACGGCCGGC
```



[View online »](#)

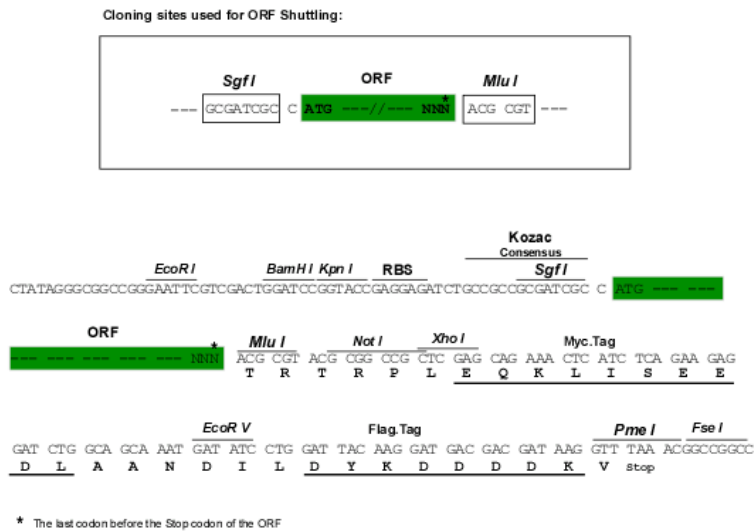
Protein Sequence: >Peptide sequence encoded by RC209451
 Blue=ORF Red=Cloning site Green=Tag(s)

MHLLGFFSVACSLAAALLPGPREAPAAAAAFESGLDLSDAEPDAGEATAYASKDLEEQLRSVSSVDEL
 MTVLYPEYWKMYKCQLRKGGWQHNRQANLNSRTEETIKFAAAHYNTEILKSIDNEWRTQCMPCREVICI
 DVGKEFGVATNTFFKPPCVSVYRCGGCCNSEGLQCMNTSTSYLSKTLFEITVPLSQGPKPVTISFANHT
 SCRCMSKLDVYRQVHSIIRRSPLATLPQCQAANKTCPTNYMWNHICRCLAQEDFMFSSDAGDDSDTGF
 HDICGPNKELDEETCQCVCRAGLRSASCQPHKELDRNSCQCVCCKNKLFPSCQGANREFDENTCQCVCCKR
 T CPRNQPLNPGKCAECTESPQKCLLKGKFFHQTCSCYRRPCTNRQKACEPGFSYSEEVCRVPSYWK
 RPQMS
 TRTRPLEQKLISEEDLAANDILDYKDDDDKV

Chromatograms: https://cdn.origene.com/chromatograms/mk6147_c04.zip

Restriction Sites: SgfI-MluI

Cloning Scheme:



ACCN: NM_005429

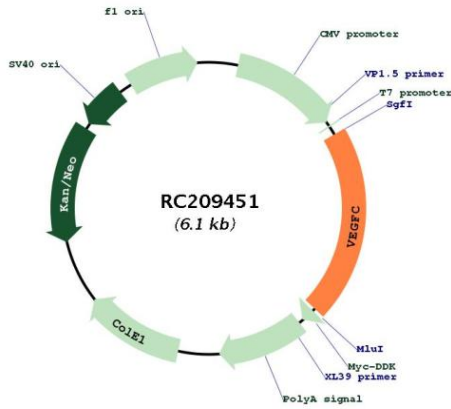
ORF Size: 1257 bp

OTI Disclaimer: Due to the inherent nature of this plasmid, standard methods to replicate additional amounts of DNA in E. coli are highly likely to result in mutations and/or rearrangements. Therefore, OriGene does not guarantee the capability to replicate this plasmid DNA. Additional amounts of DNA can be purchased from OriGene with batch-specific, full-sequence verification at a reduced cost. Please contact our customer care team at custsupport@origene.com or by calling 301.340.3188 option 3 for pricing and delivery.

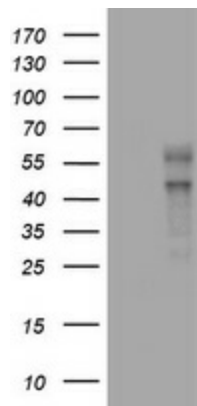
The molecular sequence of this clone aligns with the gene accession number as a point of reference only. However, individual transcript sequences of the same gene can differ through naturally occurring variations (e.g. polymorphisms), each with its own valid existence. This clone is substantially in agreement with the reference, but a complete review of all prevailing variants is recommended prior to use. [More info](#)

OTI Annotation:	This clone was engineered to express the complete ORF with an expression tag. Expression varies depending on the nature of the gene.
Components:	The ORF clone is ion-exchange column purified and shipped in a 2D barcoded Matrix tube containing 10ug of transfection-ready, dried plasmid DNA (reconstitute with 100 ul of water).
Reconstitution Method:	<ol style="list-style-type: none">1. Centrifuge at 5,000xg for 5min.2. Carefully open the tube and add 100ul of sterile water to dissolve the DNA.3. Close the tube and incubate for 10 minutes at room temperature.4. Briefly vortex the tube and then do a quick spin (less than 5000xg) to concentrate the liquid at the bottom.5. Store the suspended plasmid at -20°C. The DNA is stable for at least one year from date of shipping when stored at -20°C.
RefSeq:	NM_005429.5
RefSeq Size:	2103 bp
RefSeq ORF:	1260 bp
Locus ID:	7424
UniProt ID:	P49767
Cytogenetics:	4q34.3
Domains:	PDGF, CXCXC
Protein Families:	Druggable Genome, Secreted Protein
Protein Pathways:	Bladder cancer, Cytokine-cytokine receptor interaction, Focal adhesion, mTOR signaling pathway, Pancreatic cancer, Pathways in cancer, Renal cell carcinoma
MW:	46.9 kDa
Gene Summary:	The protein encoded by this gene is a member of the platelet-derived growth factor/vascular endothelial growth factor (PDGF/VEGF) family. The encoded protein promotes angiogenesis and endothelial cell growth, and can also affect the permeability of blood vessels. The proprotein is further cleaved into a fully processed form that can bind and activate VEGFR-2 and VEGFR-3 receptors. [provided by RefSeq, Apr 2014]

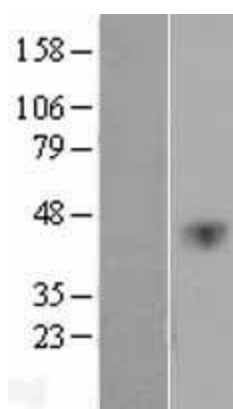
Product images:



Circular map for RC209451



HEK293T cells were transfected with the pCMV6-ENTRY control (Cat# [PS100001], Left lane) or pCMV6-ENTRY VEGFC (Cat# RC209451, Right lane) cDNA for 48 hrs and lysed. Equivalent amounts of cell lysates (5 ug per lane) were separated by SDS-PAGE and immunoblotted with anti-VEGFC (Cat# [TA801089]). Positive lysates [LY401667] (100ug) and [LC401667] (20ug) can be purchased separately from OriGene.



Western blot validation of overexpression lysate (Cat# [LY401667]) using anti-DDK antibody (Cat# [TA50011-100]). Left: Cell lysates from untransfected HEK293T cells; Right: Cell lysates from HEK293T cells transfected with RC209451 using transfection reagent MegaTran 2.0 (Cat# [TT210002]).