

Product datasheet for RC209446

LYPLA3 (PLA2G15) (NM_012320) Human Tagged ORF Clone

Product data:

Product Type:	Expression Plasmids
Product Name:	LYPLA3 (PLA2G15) (NM_012320) Human Tagged ORF Clone
Tag:	Myc-DDK
Symbol:	LYPLA3
Synonyms:	ACS; GXVPLA2; LLPL; LPLA2; LYPLA3
Mammalian Cell Selection:	Neomycin
Vector:	pCMV6-Entry (PS100001)
E. coli Selection:	Kanamycin (25 ug/mL)
ORF Nucleotide Sequence:	>RC209446 ORF sequence Red=Cloning site Blue=ORF Green=Tags(s)

TTTTGTAATACGACTCACTATAGGGCGGCCGGAATTCGTCGACTGGATCCGGTACCGAGGAGATCTGCC
GCC**CGATCGCC**

ATGGGCCTCCACCTCCGCCCTACCGTGTGGGGCTGCTCCCGGATGGCCTCCTGTTCTCTTGCTGCTGC
TAATGCTGCTCGCGGACCCAGCGCTCCCGGCCGGACGTACCCCCAGTGGTGTGGTCCCTGGTGATT
GGGTAACCAACTGGAAGCCAAGCTGGACAAGCCGACAGTGGTGCCTACCTCTGCTCCAAGAAGACCGAA
AGCTACTTCACAATCTGGCTGAACCTGGAAGTGTGCTGCCTGTCATCATTGACTGCTGGATTGACAATA
TCAGGCTGGTTTACAACAAAACATCCAGGGCCACCCAGTTTCTGATGGTGTGGATGTACGTGTCCTGG
CTTTGGGAAGACCTTCTCACTGGAGTTCCTGGACCCAGCAAAGCAGCGTGGGTTCTATTTCCACACC
ATGGTGGAGAGCCTTGTGGGCTGGGGCTACACACGGGGTGGAGATGTCCGAGGGGCTCCCTATGACTGGC
GCCGAGCCCCAAATGAAAACGGGCCCTACTTCTGGCCCTCCGCGAGATGATCGAGGAGATGTACCAGCT
GTATGGGGGCCCGTGGTGTGTTGCCACAGTATGGGCAACATGTACACGCTCTACTTTCTGCAGCGG
CAGCCGACGGCCTGGAAGGACAAGTATATCCGGCCTTCGTGTCACTGGGTGCGCCCTGGGGGGCGTGG
CCAAGACCCTGCGCGTCTGGCTTCAGGAGACAACAACCGGATCCAGTCATCGGGCCCCGAAGATCCG
GGAGCAGCAGCGGTGAGTGTCTCCACAGCTGGTGTGCCCTACAACACACATGGTACCTGAGAAG
GTGTTTCGTGCAGACCCACAATCAACTACACACTGCGGGACTCCGCAAGTTCTCCAGGACATCGGCT
TTGAAGATGGCTGCTCATGCGGCAGGACACAGAAGGGCTGGTGAAGCCACGATGCCACCTGGCGTGCA
GCTGCACTGCCTCTATGGTACTGGCGTCCCCACACCAGACTCCTTCTACTATGAGAGCTTCCCTGACCGT
GACCCATAAATCTGCTTTGGTGACGGCGATGGTACTGTGAACTTGAAGAGTGCCCTGCAGTGCCAGGCCCT
GGCAGAGCCGCCAGGAGCACCAAGTGTGCTGCAGGAGCTGCCAGGCAGCGAGCACATCGAGATGCTGGC
CAACGCCACCACCTGGCCTATCTGAAACGTGTGCTCCTTGGGCC

ACGCGTACGCGGCCGCTCGAGCAGAACTCATCTCAGAAGAGGATCTGGCAGCAAATGATATCCTGGATT
ACAAGGATGACGACGATAAGGTTTAA



[View online »](#)

Protein Sequence: >RC209446 protein sequence
Red=Cloning site Green=Tags(s)

MGLHLRPYRVGLLPDGLLFLLLLMLLADPALPAGRHPVVLVPGDLGNQLEAKLDKPTVVHYLCSKYTE
 SYFTIWLNLELLLPVIIDCWIDNIRLVYNKTSRATQFPDGVDRVVPFGKTF SLEFLDPSKSSVGSYFHT
 MVESLVGWGYTRGEDVRGAPYDWRRAPNENGPYFLALREMIEMYQLYGGPVVLVAHSMGNMYTL YFLQR
 QPQAWKDKYIRAFVSLGAPWGGVAKTLRVLASGDNNRIPVIGPLKIREQQRSAVSTSWLLPYNYTWSPEK
 VFVQTPTINYTLRDYRKFQDIGFEDGWLMRQDTEGLVEATMPPGVQLHCLYGTGPVTPDSFYYESFPDR
 DPKICFGDGDGTVNLKSAQCQAWQSRQEHQVLLQELPGSEHIEMLANATTLAYLKRVLVLLGP

TRTRPLEQKLISEEDLAANDILDYKDDDDKV

Chromatograms: https://cdn.origene.com/chromatograms/mk6525_d04.zip

Restriction Sites: SgfI-MluI

Cloning Scheme:



ACCN: NM_012320

ORF Size: 1236 bp

OTI Disclaimer: The molecular sequence of this clone aligns with the gene accession number as a point of reference only. However, individual transcript sequences of the same gene can differ through naturally occurring variations (e.g. polymorphisms), each with its own valid existence. This clone is substantially in agreement with the reference, but a complete review of all prevailing variants is recommended prior to use. [More info](#)

OTI Annotation: This clone was engineered to express the complete ORF with an expression tag. Expression varies depending on the nature of the gene.

Components: The ORF clone is ion-exchange column purified and shipped in a 2D barcoded Matrix tube containing 10ug of transfection-ready, dried plasmid DNA (reconstitute with 100 ul of water).

Reconstitution Method:

1. Centrifuge at 5,000xg for 5min.
2. Carefully open the tube and add 100ul of sterile water to dissolve the DNA.
3. Close the tube and incubate for 10 minutes at room temperature.
4. Briefly vortex the tube and then do a quick spin (less than 5000xg) to concentrate the liquid at the bottom.
5. Store the suspended plasmid at -20°C. The DNA is stable for at least one year from date of shipping when stored at -20°C.

RefSeq: [NM_012320.4](#)

RefSeq Size: 2764 bp

RefSeq ORF: 1239 bp

Locus ID: 23659

UniProt ID: [Q8NCC3](#)

Cytogenetics: 16q22.1

Domains: LACT

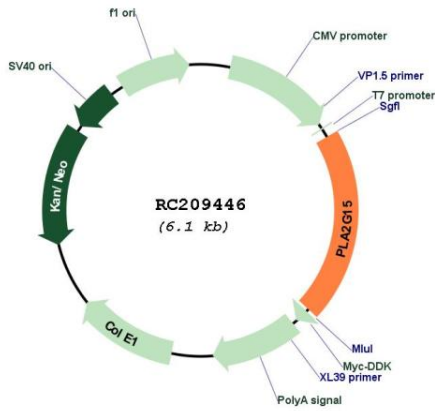
Protein Families: Secreted Protein

Protein Pathways: Glycerophospholipid metabolism, Lysosome

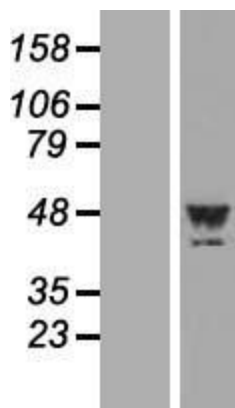
MW: 46.7 kDa

Gene Summary: Lysophospholipases are enzymes that act on biological membranes to regulate the multifunctional lysophospholipids. The protein encoded by this gene hydrolyzes lysophosphatidylcholine to glycerophosphorylcholine and a free fatty acid. This enzyme is present in the plasma and thought to be associated with high-density lipoprotein. A later paper contradicts the function of this gene. It demonstrates that this gene encodes a lysosomal enzyme instead of a lysophospholipase and has both calcium-independent phospholipase A2 and transacylase activities. [provided by RefSeq, Jul 2008]

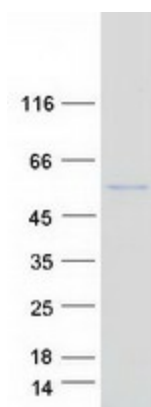
Product images:



Circular map for RC209446



Western blot validation of overexpression lysate (Cat# [LY415835]) using anti-DDK antibody (Cat# [TA50011-100]). Left: Cell lysates from untransfected HEK293T cells; Right: Cell lysates from HEK293T cells transfected with RC209446 using transfection reagent MegaTran 2.0 (Cat# [TT210002]).



Coomassie blue staining of purified PLA2G15 protein (Cat# [TP309446]). The protein was produced from HEK293T cells transfected with PLA2G15 cDNA clone (Cat# RC209446) using MegaTran 2.0 (Cat# [TT210002]).