

Product datasheet for **RC209440**

TIM 3 (HAVCR2) (NM_032782) Human Tagged ORF Clone

Product data:

Product Type:	Expression Plasmids
Product Name:	TIM 3 (HAVCR2) (NM_032782) Human Tagged ORF Clone
Tag:	Myc-DDK
Symbol:	TIM 3
Synonyms:	CD366; HAVcr-2; KIM-3; SPTCL; Tim-3; TIM3; TIMD-3; TIMD3
Mammalian Cell Selection:	Neomycin
Vector:	pCMV6-Entry (PS100001)
E. coli Selection:	Kanamycin (25 ug/mL)
ORF Nucleotide Sequence:	>RC209440 ORF sequence Red=Cloning site Blue=ORF Green=Tags(s)

TTTTGTAATACGACTCACTATAGGGCGCCGGGAATTCGTCGACTGGATCCGGTACCGAGGAGATCTGCC
GCC**CGGATCGCC**

ATGTTTTACATCTTCCCTTTGACTGTGTCTGCTGCTGCTGCTACTACTTACAAGTCTCAGAAG
TGAATACAGAGCGGAGGTCGGTCAGAATGCCTATCTGCCCTGCTTACACCCAGCCGCCAGGGAA
CCTCGTGCCCGTCTGCTGGGGCAAAGGAGCCTGTCTGTGTTGAATGTGGCAACGTGGTCTCAGGACT
GATGAAAGGGATGTGAATTATTGGACATCCAGATACTGGCTAAATGGGGATTTCCGCAAAGGAGATGTGT
CCCTGACCATAGAGAATGTGACTCTAGCAGACAGTGGGATCTACTGCTGCCGGATCCAAATCCCAGGCAT
AATGAATGATGAAAAATTAACCTGAAGTTGGTCATCAAACCAGCCAAGGTCACCCCTGCACCGACTCTG
CAGAGAGACTTCACTGCAGCCTTCCAAGGATGCTTACCACCAGGGGACATGGCCAGCAGAGACACAGA
CACTGGGGAGCCTCCCTGATATAAATCTAACACAAATATCCACATTGGCCAATGAGTTACGGGACTCTAG
ATTGGCCAATGACTTACGGGACTCTGGAGCAACCATCAGAATAGGCATCTACATCGGAGCAGGGATCTGT
GCTGGGCTGGCTCGGCTCTTATCTTCGGCGCTTAATTTTCAAATGGTATTCTCATAGCAAAGAGAAGA
TACAGAATTTAAGCCTCATCTCTTTGGCCAACCTCCCTCCCTCAGGATTGGCAAATGCAGTAGCAGAGGG
AATTCGCTCAGAAGAAAACATCTATACCATTGAAGAGAACGTATATGAAGTGGAGGAGCCCAATGAGTAT
TATTGCTATGTGACGACAGCAGGACGAACCCCTCACAACTTTGGGTTGTCGCTTTGCAATGCCA

ACGCGTACGCGGCCGCTCGAGCAGAAACTCATCTCAGAAGAGGATCTGGCAGCAAATGATATCCTGGATT
ACAAGGATGACGACGATAAGGTTTAA



[View online »](#)

Protein Sequence: >RC209440 protein sequence
Red=Cloning site Green=Tags(s)

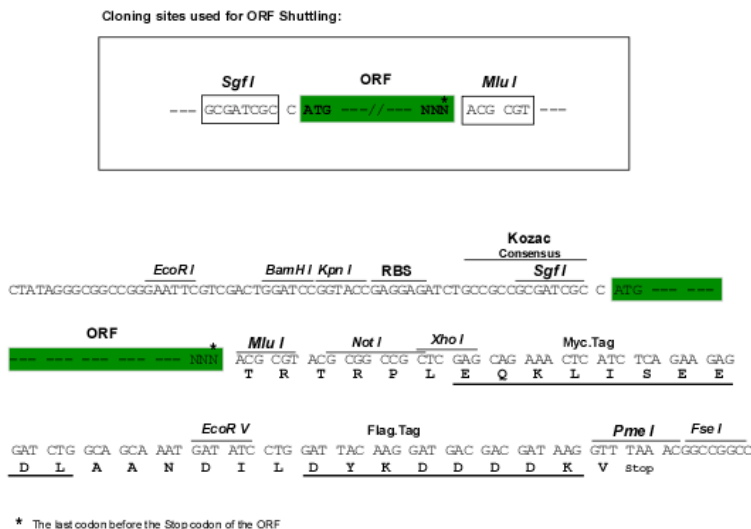
MFSHLPFDCVLLLLLLLLLRSSEVEYRAEVGQNAYLPCFYTPAAPGNLVPVCWKGKACPVFECGNVLR
 DERDVNYWTSRYWLNDFRKGDVSLTIENVTLADSGIYCCRIQIPGIMNDEKFNLKLVIKPAKVTPAPTL
 QRDFTAAPRMLTTRGHGPAETQTLGSLPDINLTQISTLANELRDSRLANDLRDSGATIRIGIYIGAGIC
 AGLALALIFGALIFKWYSHSKEIQNLSLISLANLPPSGLANAVAEGIRSEENIYTIENNVYEEVEEPNEY
 YCYVSSRQQPSQPLGCRFAMP

TRTRPLEQKLISEEDLAANDILDYKDDDDKV

Chromatograms: https://cdn.origene.com/chromatograms/mk6142_e03.zip

Restriction Sites: SgfI-MluI

Cloning Scheme:



ACCN: NM_032782

ORF Size: 903 bp

OTI Disclaimer: The molecular sequence of this clone aligns with the gene accession number as a point of reference only. However, individual transcript sequences of the same gene can differ through naturally occurring variations (e.g. polymorphisms), each with its own valid existence. This clone is substantially in agreement with the reference, but a complete review of all prevailing variants is recommended prior to use. [More info](#)

OTI Annotation: This clone was engineered to express the complete ORF with an expression tag. Expression varies depending on the nature of the gene.

Components: The ORF clone is ion-exchange column purified and shipped in a 2D barcoded Matrix tube containing 10ug of transfection-ready, dried plasmid DNA (reconstitute with 100 ul of water).

Reconstitution Method:

1. Centrifuge at 5,000xg for 5min.
2. Carefully open the tube and add 100ul of sterile water to dissolve the DNA.
3. Close the tube and incubate for 10 minutes at room temperature.
4. Briefly vortex the tube and then do a quick spin (less than 5000xg) to concentrate the liquid at the bottom.
5. Store the suspended plasmid at -20°C. The DNA is stable for at least one year from date of shipping when stored at -20°C.

RefSeq: [NM_032782.1](#)

RefSeq Size: 2448 bp

RefSeq ORF: 906 bp

Locus ID: 84868

UniProt ID: [Q8TDQ0](#)

Cytogenetics: 5q33.3

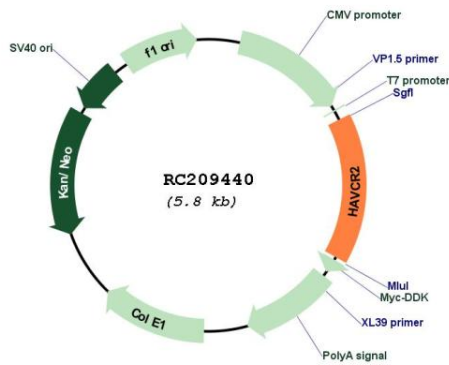
Domains: IG

Protein Families: Druggable Genome, Transmembrane

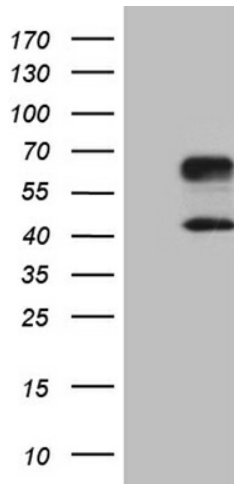
MW: 33.4 kDa

Gene Summary: The protein encoded by this gene belongs to the immunoglobulin superfamily, and TIM family of proteins. CD4-positive T helper lymphocytes can be divided into types 1 (Th1) and 2 (Th2) on the basis of their cytokine secretion patterns. Th1 cells are involved in cell-mediated immunity to intracellular pathogens and delayed-type hypersensitivity reactions, whereas, Th2 cells are involved in the control of extracellular helminthic infections and the promotion of atopic and allergic diseases. This protein is a Th1-specific cell surface protein that regulates macrophage activation, and inhibits Th1-mediated auto- and alloimmune responses, and promotes immunological tolerance. [provided by RefSeq, Sep 2011]

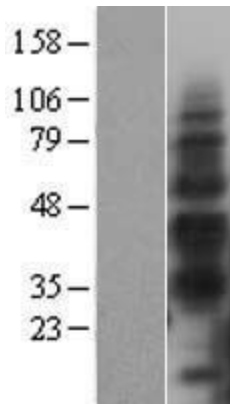
Product images:



Circular map for RC209440



HEK293T cells were transfected with the pCMV6-ENTRY control (Cat# [PS100001], Left lane) or pCMV6-ENTRY HAVCR2 (Cat# RC209440, Right lane) cDNA for 48 hrs and lysed. Equivalent amounts of cell lysates (5 ug per lane) were separated by SDS-PAGE and immunoblotted with anti-HAVCR2 (Cat# [TA807034])(1:2000). Positive lysates [LY403200] (100ug) and [LC403200] (20ug) can be purchased separately from OriGene.



Western blot validation of overexpression lysate (Cat# [LY403200]) using anti-DDK antibody (Cat# [TA50011-100]). Left: Cell lysates from untransfected HEK293T cells; Right: Cell lysates from HEK293T cells transfected with RC209440 using transfection reagent MegaTran 2.0 (Cat# [TT210002]).