

Product datasheet for **RC209151**

Dystrophia myotonica protein kinase (DMPK) (NM_004409) Human Tagged ORF Clone

Product data:

Product Type:	Expression Plasmids
Product Name:	Dystrophia myotonica protein kinase (DMPK) (NM_004409) Human Tagged ORF Clone
Tag:	Myc-DDK
Symbol:	Dystrophia myotonica protein kinase
Synonyms:	DM; DM1; DM1PK; DMK; MDPK; MT-PK
Mammalian Cell Selection:	Neomycin
Vector:	pCMV6-Entry (PS100001)
E. coli Selection:	Kanamycin (25 ug/mL)



[View online »](#)

ORF Nucleotide Sequence:

>RC209151 ORF sequence
 Red=Cloning site Blue=ORF Green=Tags(s)

TTTTGTAATACGACTCACTATAGGGCGGCCGGAATTCGTCGACTGGATCCGGTACCGAGGAGATCTGCC
 GCC**CGGATCGCC**

ATGTCAGCCGAGGTGCGGCTGAGGCGGCTCCAGCAGCTGGTGTGGACCCGGGCTTCTGGGGCTGGAGC
 CCCTGCTCGACCTTCTCCTGGGCGTCCACCAGGAGCTGGGCGCCTCCGAAGTGGCCAGGACAAGTACGT
 GGCCGACTTCTTGCAGTGGGCGGAGCCATCGTGGTGAGGCTTAAGGAGGTCCGACTGCAGAGGGACGAC
 TTCGAGATTCTGAAGGTGATCGGACCGGGGGCTTTCAGCGAGGTAGCGGTAGTGAAGATGAAGCAGACGG
 GCCAGGTGTATGCCATGAAGATCATGAACAAGTGGGACATGCTGAAGAGGGGCGAGGTGTCGTGCTTCCG
 TGAGGAGAGGGACGTGTTGGTGAATGGGACCGGCGGTGGATCACGCAGCTGCACCTTCGCTTCCAGGAT
 GAGAACTACCTGTACCTGGTATGGAGTATTACGTGGGCGGGACCTGCTGACACTGCTGAGCAAGTTTG
 GGGAGCGGATCCGGCCGAGATGGCGCGTCTACCTGGCGGAGATTGTCATGGCCATAGACTCGGTGCA
 CCGGCTTGGCTAGTGCACAGGGACATCAAACCCGACAACATCCTGCTGGACCGCTGTGGCCACATCCGC
 CTGGCCGACTTCCGCTCTTGCCTCAAGCTGCGGGCAGATGGAACGGTGGCGTGGTGGCTGTGGGCA
 CCCCAGACTACCTGTCCCCGAGATCCTGCAGGCTGTGGGCGGTGGGCTGGGACAGGCAGCTACGGGCC
 CGAGTGTGACTGGTGGGCGCTGGGTGATTTCGCCTATGAAATGTTCTATGGGCGAGACGCCCTTCTACGCG
 GATTCCACGGCGGAGACCTATGGCAAGATCGTCCACTACAAGGAGCACCTCTCTGCGCGTGGTGGACG
 AAGGGTCCCTGAGGAGGCTCGAGACTTCAATCAGCGTGTGTGTCCCCGGAGACACGGCTGGGCCG
 GGTGGAGCAGGCGACTCCGGACACATCCCTTCTTTGGCCTCGACTGGGATGGTCTCCGGGACAGC
 GTGCCCCCTTTACACCGGATTTCAAGGTGCCACCGACACATGCAACTTCGACTTGGTGGAGGACGGGC
 TCACTGCCATGGTGAGCGGGGCGGGGAGACACTGTCGGACATTGCGGAAGGTGCGCCGCTAGGGGTCCA
 CCTGCCTTTTGTGGCTACTCCTACTCCTGCATGGCCCTCAGGGACAGTGAAGTCCAGGCCACACACC
 ATGGAAGTGGAGCCGAGCAGCTGCTTGAAGCACAGTGAAGCGCCAGCCTGGAGCCCTCGGTGTCCC
 CACAGGATGAAACAGCTGAAGTGGCAGTCCAGCGGCTGTCCCTGCGGCAGAGGCTGAGGCCGAGGTGAC
 GCTGCGGGAGCTCCAGGAAGCCCTGGAGGAGGAGTGTCAACCGGAGAGCCTGAGCCGGGAGATGGAG
 GCCATCCGCACGGACAACCAGAACTTCGCCAGTCAACTACGCGAGGAGAGGCTCGGAACCGGGACCTAG
 AGGCACACGTCCGGCAGTTCAGGAGCGGATGGAGTGTGTCAGGAGGAGGAGCCACAGCTGTACGCGG
 GGTCCCCAGTCCCGGGCCAGGATCCACCTTCCCATCTAGATGGCCCCCGCCGTGGCTGTGGGCCAG
 TGCCCGCTGGTGGGGCCAGGCCCATGCACCGCCGCCACCTGCTGCTCCCTGCCAGGCTCCCTAGGCTG
 GCCTATCGGAGGCGCTTCCCTGCTCCTGTTCCGCGTGTCTGTCTCGTCCCGCCGCTGGGCTGCAT
 TGGGTTGGTGGCCACGCGGCCAACTACCGCAGTCTGGGCGGCCAGGAGCCGCCCGCTCC

ACGCGTACGCGGCCGCTCGAGCAGAACTCATCTCAGAAGAGGATCTGGCAGCAAATGATATCCTGGATT
 ACAAGGATGACGACGATAAGGTTTAA

Protein Sequence:

>RC209151 protein sequence
 Red=Cloning site Green=Tags(s)

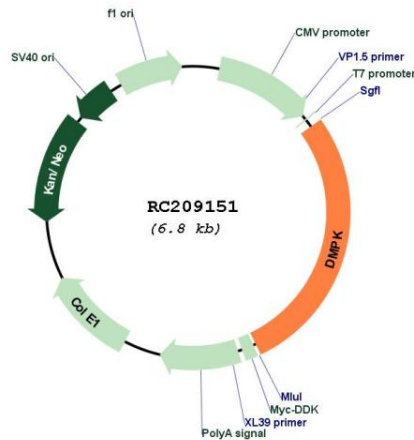
MSAEVRLRRLQQLVLDPGFGLGLEPLDLLLVHQLGASELAQDKYVADFLQWAEPIVVRLKEVRLQRDD
 FEILKVIKRGAFSEVAVVKKMQTGQVYAMKIMNKWDMLKRGEVSCFREERDVLVNGDRRWITQLHFAFQD
 ENYLVLVMEYVGGDLLTLLSKFGERIPAEMARFYLAIEVMAIDSVHRLGYVHRDIKPDNILLDRCGHIR
 LADFGSCLKLADGTVRSLVAVGTPDYLSPEILQAVGGGPGTGSYGPECDWWALGVFAYEMFYGQTPFYA
 DSTAETYGKIVHYKEHLSLPLVDEGVPEEARDFIQRLCPPETRLGRGGAGDFRTHPFFGLDWDGLRDS
 VPPFTPDFEGATDTCNFDLVEDGLTAMVSGGGETLSDIREGAPLVHLPFVGYSSYSCMALRDSEVPGPTP
 MELEAEQLLEPHVQAPSLSPQDETAEVAVPAAPAAEAEVTLRELQEALEEEVLTQRSLREME
 AIRDNDQNFASQLREAEARNRDLEAHVRQLQERMELLQAEGATAVTGVPSPRATDPPSHLDGPPAVAVGQ
 CPLVGPMPHRRHLLPARVPRPGLSEALSLLLFAVLSRAAALGCIGLVAHAGQLTAVWRRPGAARAP

TRTRPLEQKLISEEDLAANDILDYKDDDDKV

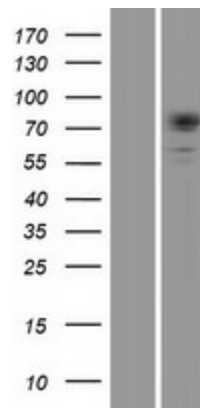
Locus ID: 1760
UniProt ID: [Q09013](#)
Cytogenetics: 19q13.32
Domains: pkinase, S_TK_X, TyrKc, S_TKc
Protein Families: Druggable Genome, Protein Kinase
MW: 69.4 kDa

Gene Summary: The protein encoded by this gene is a serine-threonine kinase that is closely related to other kinases that interact with members of the Rho family of small GTPases. Substrates for this enzyme include myogenin, the beta-subunit of the L-type calcium channels, and phospholemman. The 3' untranslated region of this gene contains 5-38 copies of a CTG trinucleotide repeat. Expansion of this unstable motif to 50-5,000 copies causes myotonic dystrophy type I, which increases in severity with increasing repeat element copy number. Repeat expansion is associated with condensation of local chromatin structure that disrupts the expression of genes in this region. Several alternatively spliced transcript variants of this gene have been described, but the full-length nature of some of these variants has not been determined. [provided by RefSeq, Jul 2016]

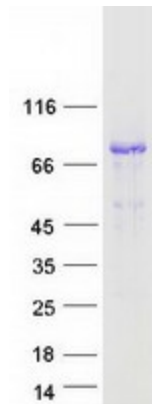
Product images:



Circular map for RC209151



Western blot validation of overexpression lysate (Cat# [LY418004]) using anti-DDK antibody (Cat# [TA50011-100]). Left: Cell lysates from untransfected HEK293T cells; Right: Cell lysates from HEK293T cells transfected with RC209151 using transfection reagent MegaTran 2.0 (Cat# [TT210002]).



Coomassie blue staining of purified DMPK protein (Cat# [TP309151]). The protein was produced from HEK293T cells transfected with DMPK cDNA clone (Cat# RC209151) using MegaTran 2.0 (Cat# [TT210002]).