

## Product datasheet for RC209127

### FOXL2 (NM\_023067) Human Tagged ORF Clone

#### Product data:

Product Type:	Expression Plasmids
Product Name:	FOXL2 (NM_023067) Human Tagged ORF Clone
Tag:	Myc-DDK
Symbol:	FOXL2
Synonyms:	BPES; BPES1; PFRK; PINTO; POF3
Mammalian Cell Selection:	Neomycin
Vector:	pCMV6-Entry (PS100001)
E. coli Selection:	Kanamycin (25 ug/mL)
ORF Nucleotide Sequence:	>RC209127 representing NM_023067 Red=Cloning site Blue=ORF Green=Tags(s)

TTTTGTAATACGACTCACTATAGGGCGGCCGGAATTCGTCGACTGGATCCGGTACCGAGGAGATCTGCC  
GCC**CGATCGCC**

ATGATGGCCAGCTACCCCGAGCCCGAGGACGCGGGGGCCCTGCTGGCCCCAGAGACCGGTCGCACAG  
TCAAGGAGCCAGAAGGGCCGCCCGAGCCAGGCAAGGGCGGTGGGGTGGCGGGGACAGCCCGGA  
GAAGCCGACCCGGCGCAGAAGCCCCGTACTCGTACGTGGCGCTCATCGCCATGGCGATCCGCGAGAGC  
GCGGAGAAGAGGCTCACGCTGTCCGGCATCTACCAGTACATCATCGGAAGTTCCCGTTCTACGAGAAGA  
ATAAGAAGGGCTGGCAAATAGCATCCGCCACAACCTCAGCCTCAACGAGTGCTTCATCAAGGTGCCGCG  
CGAGGGCGGGCGGAGCGCAAGGGCAACTACTGGACGCTGGACCCGGCCTGCGAAGACATGTTTCGAGAAG  
GGCAACTACCGGCGCCCGCCGCATGAAGAGGCCCTTCCGGCCCGCCCGCGCACTTCCAGCCCGGCA  
AGGGGCTCTTCGGGGCCGGAGGGCGCCGAGGCGGGTGCAGGCGTGGCGGGCGCCGGGGCCGACGGCTACGG  
CTACCTGGCGCCCCCAAGTACCTGCAGTCTGGCTTCTCAACAACCTCGTGGCCGCTACCGCAGCCTCCC  
TCACCCATGCCCTATGCCTCCTGCCAGATGGCGGAGCCGAGCGGCTGCAGCAGCTGCGGCTGCAGCCG  
CGGGCCCCGCTAGCCCTGGCGCGCCGCTGTGGTCAAGGGGCTGGCGGGCCCGCCGCTCGTACGGGCC  
GTACACACGCGTGCAGAGCATGGCGTGCACCCCGGCGTAGTGAACCTCGTACAATGGCCTGGGAGGCCCG  
CAGCGCCGCTGCCCCACCGCACCGGGGCGCCGCGCCGCGCGGGCCAGCTCAGCCCTGCCAGCCC  
AGCCACCGCCGCCCCCGGCGCCCGCGCCACAGTGCGCCGGGCTGCAGTTCGCTTGTGCCCGCAG  
CCCGAGCTCGCCATGATGCATTGCTTACTGGGACCACGACAGCAAGACCGGCGGCTGCATTCCGCGCC  
TCGATCTC

AG**CGGACCG**ACGCGTACGCGGCCGCTCGAGCAGAACTCATCTCAGAAGAGGATCTGGCAGCAAATGATATCC  
TGGATTACAAGGATGACGACGATAAGGTTTAA



[View online »](#)

**Protein Sequence:** >RC209127 representing NM\_023067  
Red=Cloning site Green=Tags(s)

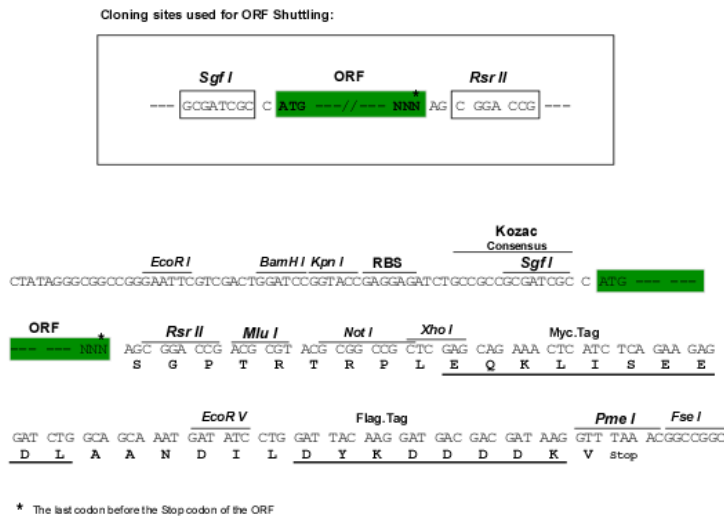
MMASYPEPEDAAGALLAPETGRTVKEPEGPPSPGKGGGGGGTAPKPDPAQKPPYSYVALIAMAIRES  
 AEKRLTLSGIYQYIIAKFPFYKNNKKGWQNSIRHNLNLNECFIKVPREGGGERKGNWTLDPACEDMF EK  
 GNYRRRRMRKRPFRPPP AHFQPGKGLFGAGGAAGCGVAGAGADGYGLAPPKYLQSGFLNNSWPLPQPP  
 SPMPYASCQMAAAAAAAAAAAAAAGPGSPGAAAVVKLAGPAASYGPYTRVQSMALPPGVVNSYNGLGGP  
 PAAPPPPHPHPHAHHLHAAAAPPPAPPHHGAAPPPGQLSPASPATAAPPAPAPTSAPGLQFACARQ  
 PELAMMHCSYWDHDSKTGALHSRLDL

SGPTRTRRLEQKLI SEEDLAANDILDYKDDDDKV

**Chromatograms:** [https://cdn.origene.com/chromatograms/mg4089\\_h01.zip](https://cdn.origene.com/chromatograms/mg4089_h01.zip)

**Restriction Sites:** SgfI-RsrII

**Cloning Scheme:**



**ACCN:** NM\_023067

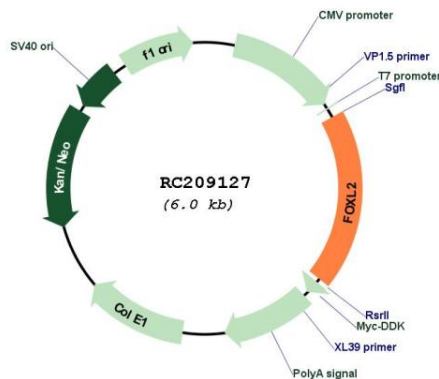
**ORF Size:** 1128 bp

**OTI Disclaimer:** Due to the inherent nature of this plasmid, standard methods to replicate additional amounts of DNA in E. coli are highly likely to result in mutations and/or rearrangements. Therefore, OriGene does not guarantee the capability to replicate this plasmid DNA. Additional amounts of DNA can be purchased from OriGene with batch-specific, full-sequence verification at a reduced cost. Please contact our customer care team at [custsupport@origene.com](mailto:custsupport@origene.com) or by calling 301.340.3188 option 3 for pricing and delivery.

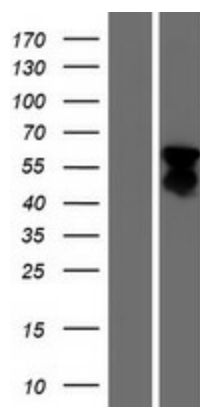
The molecular sequence of this clone aligns with the gene accession number as a point of reference only. However, individual transcript sequences of the same gene can differ through naturally occurring variations (e.g. polymorphisms), each with its own valid existence. This clone is substantially in agreement with the reference, but a complete review of all prevailing variants is recommended prior to use. [More info](#)

<b>OTI Annotation:</b>	This clone was engineered to express the complete ORF with an expression tag. Expression varies depending on the nature of the gene.
<b>Components:</b>	The ORF clone is ion-exchange column purified and shipped in a 2D barcoded Matrix tube containing 10ug of transfection-ready, dried plasmid DNA (reconstitute with 100 ul of water).
<b>Reconstitution Method:</b>	<ol style="list-style-type: none"> <li>1. Centrifuge at 5,000xg for 5min.</li> <li>2. Carefully open the tube and add 100ul of sterile water to dissolve the DNA.</li> <li>3. Close the tube and incubate for 10 minutes at room temperature.</li> <li>4. Briefly vortex the tube and then do a quick spin (less than 5000xg) to concentrate the liquid at the bottom.</li> <li>5. Store the suspended plasmid at -20°C. The DNA is stable for at least one year from date of shipping when stored at -20°C.</li> </ol>
<b>RefSeq:</b>	<a href="#">NM_023067.4</a>
<b>RefSeq Size:</b>	2744 bp
<b>RefSeq ORF:</b>	1131 bp
<b>Locus ID:</b>	668
<b>UniProt ID:</b>	<a href="#">P58012</a>
<b>Cytogenetics:</b>	3q22.3
<b>Protein Families:</b>	Druggable Genome, Transcription Factors
<b>MW:</b>	38.6 kDa
<b>Gene Summary:</b>	This gene encodes a forkhead transcription factor. The protein contains a fork-head DNA-binding domain and may play a role in ovarian development and function. Expansion of a polyalanine repeat region and other mutations in this gene are a cause of blepharophimosis syndrome and premature ovarian failure 3. [provided by RefSeq, Jul 2016]

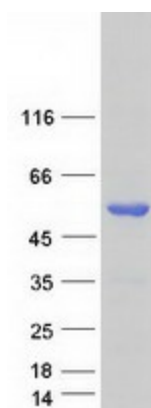
### Product images:



Circular map for RC209127



Western blot validation of overexpression lysate (Cat# [LY411500]) using anti-DDK antibody (Cat# [TA50011-100]). Left: Cell lysates from untransfected HEK293T cells; Right: Cell lysates from HEK293T cells transfected with RC209127 using transfection reagent MegaTran 2.0 (Cat# [TT210002]).



Coomassie blue staining of purified FOXL2 protein (Cat# [TP309127]). The protein was produced from HEK293T cells transfected with FOXL2 cDNA clone (Cat# RC209127) using MegaTran 2.0 (Cat# [TT210002]).