

## Product datasheet for **RC208966**

### NDUFA11 (NM\_175614) Human Tagged ORF Clone

#### Product data:

**Product Type:** Expression Plasmids  
**Product Name:** NDUFA11 (NM\_175614) Human Tagged ORF Clone  
**Tag:** Myc-DDK  
**Symbol:** NDUFA11  
**Synonyms:** B14.7; CI-B14.7; MC1DN14  
**Mammalian Cell Selection:** Neomycin  
**Vector:** pCMV6-Entry (PS100001)  
**E. coli Selection:** Kanamycin (25 ug/mL)  
**ORF Nucleotide Sequence:** >RC208966 ORF sequence  
Red=Cloning site Blue=ORF Green=Tags(s)

TTTTGTAATACGACTCACTATAGGGCGGCCGGAATTCGTCGACTGGATCCGGTACCGAGGAGATCTGCC  
GCC**CGATCGCC**

ATGGCGCCGAAGGTTTTTCGTCAGTACTGGGATATCCCCGATGGCACCGATTGCCACCGCAAAGCCTACA  
GCACCACAGTATTGCCAGCGCTCGCTGGCCTGACCGCCGCTGCCTACAGAGTCACACTCAATCCTCCGGG  
CACCTTCCTGAAGGAGTGGCTAAGGTTGGACAATACACGTTCACTGCAGCTGCTGTCGGGGCCGTGTTT  
GGCCTACCACCTGCATCAGCGCCATGTCGCGAGAAGCCGACGCCCTGAACACTTCTCGGTG  
GCTGCGCCGAGGCTGACTCTGGGAGCACGCACGCAACTACGGGATTGGCGCCCGCCTGCGTGTA  
CTTTGGCATAGCGCCTCCTGGTCAAGATGGGCGGCTGGAGGGCTGGGAGGTGTTGCAAACCCAAG  
GTG

**ACGCGT**ACGCGGCCGCTCGAGCAGAACTCATCTCAGAAGAGGATCTGGCAGCAAATGATATCCTGGATT  
ACAAGGATGACGACGATAAGGTTTAA

**Protein Sequence:** >RC208966 protein sequence  
Red=Cloning site Green=Tags(s)

MAPKVFRQYWDIPDGTDCRKYSTTSIASVAGLTAAAYRVTLNPPGTFLEGVAKVGQYFTAAAVGAVF  
GLTTCISAHVREKPDPLNYFLGGCAGGLTLGARTHNYGIGAAACVYFGIAASLVKMRLEGWEVFAKPK  
V

**TR**TRPLEQKLISEEDLAANDILDYKDDDDKV

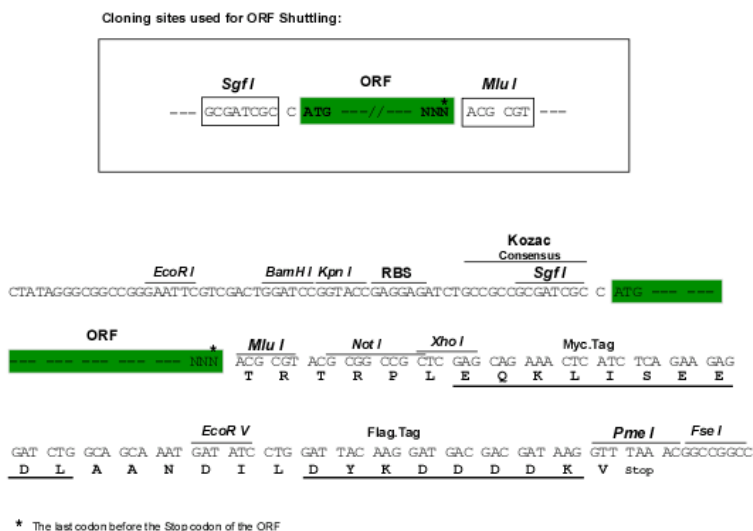
**Chromatograms:** [https://cdn.origene.com/chromatograms/mk6360\\_f12.zip](https://cdn.origene.com/chromatograms/mk6360_f12.zip)



[View online >](#)

Restriction Sites: SgfI-MluI

Cloning Scheme:



ACCN: NM\_175614

ORF Size: 423 bp

OTI Disclaimer: The molecular sequence of this clone aligns with the gene accession number as a point of reference only. However, individual transcript sequences of the same gene can differ through naturally occurring variations (e.g. polymorphisms), each with its own valid existence. This clone is substantially in agreement with the reference, but a complete review of all prevailing variants is recommended prior to use. [More info](#)

OTI Annotation: This clone was engineered to express the complete ORF with an expression tag. Expression varies depending on the nature of the gene.

Components: The ORF clone is ion-exchange column purified and shipped in a 2D barcoded Matrix tube containing 10ug of transfection-ready, dried plasmid DNA (reconstitute with 100 ul of water).

Reconstitution Method:

1. Centrifuge at 5,000xg for 5min.
2. Carefully open the tube and add 100ul of sterile water to dissolve the DNA.
3. Close the tube and incubate for 10 minutes at room temperature.
4. Briefly vortex the tube and then do a quick spin (less than 5000xg) to concentrate the liquid at the bottom.
5. Store the suspended plasmid at -20°C. The DNA is stable for at least one year from date of shipping when stored at -20°C.

RefSeq: [NM\\_175614.5](#)

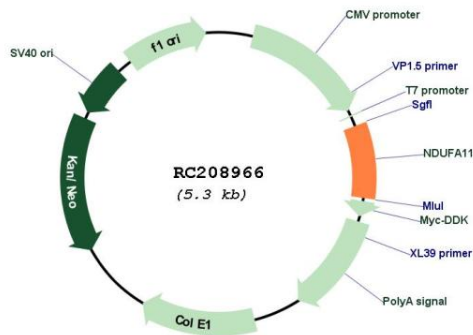
RefSeq Size: 810 bp

RefSeq ORF: 426 bp

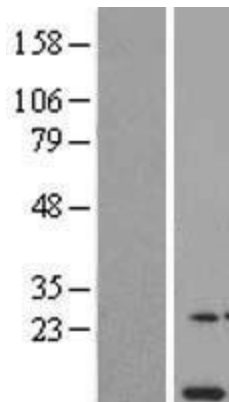
Locus ID: 126328

**UniProt ID:** [Q86Y39](#)  
**Cytogenetics:** 19p13.3  
**Protein Families:** Transmembrane  
**Protein Pathways:** Metabolic pathways, Oxidative phosphorylation  
**MW:** 14.9 kDa  
**Gene Summary:** This gene encodes a subunit of the membrane-bound mitochondrial complex I. Complex I is composed of numerous subunits and functions as the NADH-ubiquinol reductase of the mitochondrial electron transport chain. Mutations in this gene are associated with severe mitochondrial complex I deficiency. Alternate splicing results in multiple transcript variants. [provided by RefSeq, Oct 2010]

### Product images:



Circular map for RC208966



Western blot validation of overexpression lysate (Cat# [LY406269]) using anti-DDK antibody (Cat# [TA50011-100]). Left: Cell lysates from untransfected HEK293T cells; Right: Cell lysates from HEK293T cells transfected with RC208966 using transfection reagent MegaTran 2.0 (Cat# [TT210002]).