

Product datasheet for RC208631

NCR3 (NM_147130) Human Tagged ORF Clone

Product data:

Product Type: Expression Plasmids
Product Name: NCR3 (NM_147130) Human Tagged ORF Clone
Tag: Myc-DDK
Symbol: NCR3
Synonyms: 1C7; CD337; LY117; MALS; NKp30
Mammalian Cell Selection: Neomycin
Vector: pCMV6-Entry (PS100001)
E. coli Selection: Kanamycin (25 ug/mL)
ORF Nucleotide Sequence: >RC208631 ORF sequence
 Red=Cloning site Blue=ORF Green=Tags(s)

TTTTGTAATACGACTCACTATAGGGCGGCCGGAATTCGTCGACTGGATCCGGTACCGAGGAGATCTGCC
 GCC**CGATCGCC**

ATGGCCTGGATGCTGTTGCTCATCTTGATCATGGTCCATCCAGGATCCTGTGCTCTCTGGGTGTCCAGC
 CCCCTGAGATTCGTACCCTGGAAGGATCCTCTGCCTTCTGCCCTGTCTTCAATGCCAGCAAGGGAG
 ACTGGCCATTGGCTCCGTCACGTGGTCCGAGATGAGGTGGTCCAGGGAAGGAGGTGAGGAATGGAACC
 CCAGAGTTCAGGGCCGCTGGCCCACTTCTTCCCGTTTCTCCATGACCACCAGGCTGAGCTGC
 ACATCCGGGACGTGCGAGGCCATGACGCCAGCATCTACGTGTGCAGAGTGGAGGTGCTGGGCCTTGGTGT
 CGGGACAGGGAATGGGACTCGGCTGGTGGTGGAGAAAGAACATCCTCAGCTAGGGGCTGGTACAGTCCTC
 CTCTTCCGGCTGGATTCTATGCTGTGACGCTTCTCTGTGGCCGTGGGCGAGCACCGTCTATTACCAGG
 GCAAAATGTCTGACCTGGAAGGTCCAAGAAGGCAGCTGCCGGCTGTGGTCCCAGCGCCCTCCCACCACC
 ATGTGGGAGCTCAGCACATCTGCTTCCCCAGTCCCAGGAGGC

ACGCGTACGCGGCCGCTCGAGCAGAACTCATCTCAGAAGAGGATCTGGCAGCAATGATATCCTGGATT
 ACAAGGATGACGACGATAAGGTTTAA

Protein Sequence: >RC208631 protein sequence
 Red=Cloning site Green=Tags(s)

MAWMLLLILIMVHPGSCALWVSQPPEIRTLEGSSAFLPCSFNASQGR LAIGSVTWFRDEVPVGPKEVRNGT
 PEFGRGLAPLASSRFLHDHQAELHIRDVRGHDASIYVCRVEVLGLGVGTGNGTRLVVEKEHPQLGAGTVL
 LLRAGFYAVSFLSVAVGSTVYYYQKCLTWKGPRRQLPAVVPAPLPPPCGSSAHLPPVPGG

TRTRPLEQKLISEEDLAANDILDYKDDDDKV

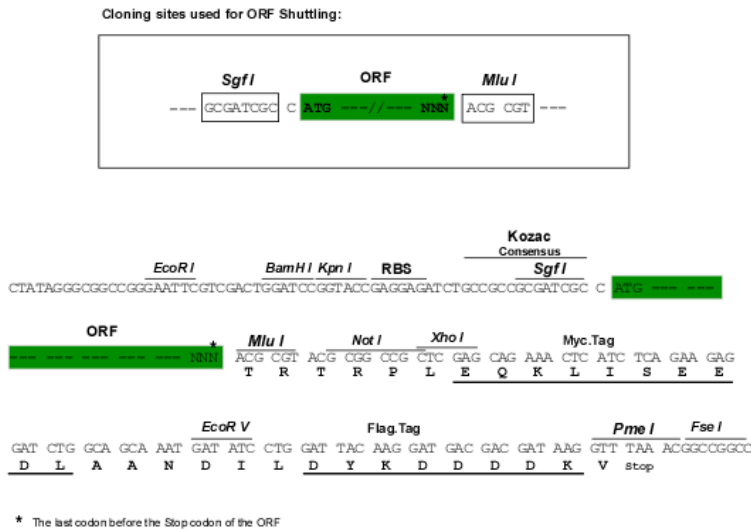


[View online »](#)

Chromatograms: https://cdn.origene.com/chromatograms/mk6553_h05.zip

Restriction Sites: SgfI-MluI

Cloning Scheme:



ACCN: NM_147130

ORF Size: 603 bp

OTI Disclaimer: The molecular sequence of this clone aligns with the gene accession number as a point of reference only. However, individual transcript sequences of the same gene can differ through naturally occurring variations (e.g. polymorphisms), each with its own valid existence. This clone is substantially in agreement with the reference, but a complete review of all prevailing variants is recommended prior to use. [More info](#)

OTI Annotation: This clone was engineered to express the complete ORF with an expression tag. Expression varies depending on the nature of the gene.

Components: The ORF clone is ion-exchange column purified and shipped in a 2D barcoded Matrix tube containing 10ug of transfection-ready, dried plasmid DNA (reconstitute with 100 ul of water).

Reconstitution Method:

1. Centrifuge at 5,000xg for 5min.
2. Carefully open the tube and add 100ul of sterile water to dissolve the DNA.
3. Close the tube and incubate for 10 minutes at room temperature.
4. Briefly vortex the tube and then do a quick spin (less than 5000xg) to concentrate the liquid at the bottom.
5. Store the suspended plasmid at -20°C. The DNA is stable for at least one year from date of shipping when stored at -20°C.

RefSeq: [NM_147130.3](#)

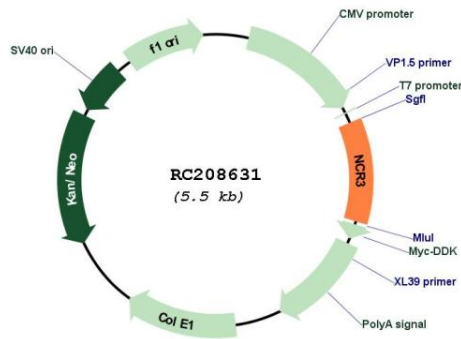
RefSeq Size: 1054 bp

RefSeq ORF: 606 bp

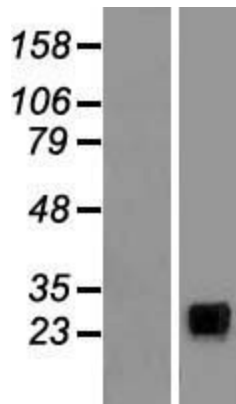
Locus ID: 259197

UniProt ID: [O14931](#)
Cytogenetics: 6p21.33
Protein Families: Druggable Genome, ES Cell Differentiation/IPS
Protein Pathways: Natural killer cell mediated cytotoxicity
MW: 21.6 kDa
Gene Summary: The protein encoded by this gene is a natural cytotoxicity receptor (NCR) that may aid NK cells in the lysis of tumor cells. The encoded protein interacts with CD3-zeta (CD247), a T-cell receptor. A single nucleotide polymorphism in the 5' untranslated region of this gene has been associated with mild malaria susceptibility. Three transcript variants encoding different isoforms have been found for this gene.[provided by RefSeq, May 2010]

Product images:



Circular map for RC208631



Western blot validation of overexpression lysate (Cat# [LY407812]) using anti-DDK antibody (Cat# [TA50011-100]). Left: Cell lysates from untransfected HEK293T cells; Right: Cell lysates from HEK293T cells transfected with RC208631 using transfection reagent MegaTran 2.0 (Cat# [TT210002]).