

Product datasheet for **RC208416**

GPM6B (NM_001001996) Human Tagged ORF Clone

Product data:

Product Type:	Expression Plasmids
Product Name:	GPM6B (NM_001001996) Human Tagged ORF Clone
Tag:	Myc-DDK
Symbol:	GPM6B
Synonyms:	M6B
Mammalian Cell Selection:	Neomycin
Vector:	pCMV6-Entry (PS100001)
E. coli Selection:	Kanamycin (25 ug/mL)
ORF Nucleotide Sequence:	>RC208416 ORF sequence Red=Cloning site Blue=ORF Green=Tags(s)

TTTTGTAATACGACTCACTATAGGGCGCCGGGAATTCGTCGACTGGATCCGGTACCGAGGAGATCTGCC
GCC**CGGATCGCC**

ATGAAGCCAGCCATGGAACTGCAGCCGAGGAAAATACTGAACAAAGCCAAGAGAGAAAAGTGAACAGCA
GAGCTGAAATGGAAATTGGCAGGTACCACTGGATGTACCCAGGCTCAAAGAACCACCACTACCATCCCGT
GCCAACCTGGGGACAGGGCTAGCCCCTTGAGCAGTCCAGGCTGCTTTGAATGCTGCATCAAGTGTCTG
GGAGGAGTCCCCTACGCCTCCCTGGTGGCCACCATCCTCTGCTTCTCCGGGTGGCCTTATTCTGCGGT
GTGGGCATGTGGCTCTCGCAGGCACCGTGGCGATTCTTGAGCAACACTTCTCCACCAACGCCAGTGACCA
TGCTTGTGCTGAGCGAGGTGATACAACTGATGCAGTATGTCATCTATGGAATTGCGTCTTTTTCTTCTTG
TATGGGATCATTCTGTTGGCAGAAGGCTTTTACACCACAAGTGCAGTGAAGAAGTGCACGGTGAGTTTA
AAACAACCGCTTGTGGCCGATGCATCAGTGAATGTTTCGTTTTCTCACCTATGTGCTTGGAGTGGCCTG
GCTGGGTGTGTTGGTTTCTCAGCGGTGCCCGTGTATGTTCTACAACATATGGTCAACTGTGAAGTC
ATCAAGTACCAGCAGACCAACGGGACCAGGGTGTGGAGCAGATCTGTGTGGATATCCGACAATACGGTA
TCATTCTTGGAAATGCTTTCCCGGAAAAATATGTGGCTCTGCCCTGGAGAACATCTGCAACACAAAACGA
GTTCTACATGTCTATCACCTGTTTCATTGTGGCTGTGCAGGAGCTGGTCCACCGTCATTGCCCTGCTG
ATCTACATGATGGCTACTACATAAATACTATGCGGTTTTGAAGTTAAGAGTCGGGAAGATTGCTGCACTA
AATTC

ACGCGTACGCGGCCGCTCGAGCAGAACTCATCTCAGAAGAGGATCTGGCAGCAAATGATATCCTGGATT
ACAAGGATGACGACGATAAGGTTTAA



[View online »](#)

Protein Sequence: >RC208416 protein sequence
Red=Cloning site Green=Tags(s)

MKPAMETAAEENTEQSQRKVNRAEMEIGRYHWMYPGSKNHQYHPVPTLGDRASPLSSPGCFECCIKCL
 GGVPYASLVATILCFSGVALFCGCGHVALAGTVAILEQHFSTNASDHALLSEVIQLMQYVIYGIASF
 YGIIILLAEFGYTTSAVKELHGEFKTTACGRICISGMFVFLTYVLGVAVLGVFGFSAVPVFMFYNIWSTCEV
 IKSPQTNGTTGVEQICVDIRQYGIIPWNAFPGKICGSALENICNTNEFYMSYHLFIVACAGAGATVIAL
 IYMMATTYNYAVLKFKSREDCCTKF

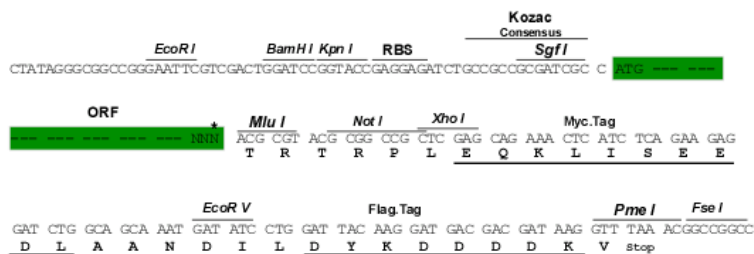
TRTRPLEQKLISEEDLAANDILDYKDDDDKV

Chromatograms: https://cdn.origene.com/chromatograms/mk6347_c04.zip

Restriction Sites: SgfI-MluI

Cloning Scheme:

Cloning sites used for ORF Shuttling:



* The last codon before the Stop codon of the ORF

ACCN: NM_001001996

ORF Size: 915 bp

OTI Disclaimer: The molecular sequence of this clone aligns with the gene accession number as a point of reference only. However, individual transcript sequences of the same gene can differ through naturally occurring variations (e.g. polymorphisms), each with its own valid existence. This clone is substantially in agreement with the reference, but a complete review of all prevailing variants is recommended prior to use. [More info](#)

OTI Annotation: This clone was engineered to express the complete ORF with an expression tag. Expression varies depending on the nature of the gene.

Components: The ORF clone is ion-exchange column purified and shipped in a 2D barcoded Matrix tube containing 10ug of transfection-ready, dried plasmid DNA (reconstitute with 100 ul of water).

Reconstitution Method:

1. Centrifuge at 5,000xg for 5min.
2. Carefully open the tube and add 100ul of sterile water to dissolve the DNA.
3. Close the tube and incubate for 10 minutes at room temperature.
4. Briefly vortex the tube and then do a quick spin (less than 5000xg) to concentrate the liquid at the bottom.
5. Store the suspended plasmid at -20°C. The DNA is stable for at least one year from date of shipping when stored at -20°C.

RefSeq: [NM_001001996.2](#)

RefSeq Size: 1799 bp

RefSeq ORF: 918 bp

Locus ID: 2824

UniProt ID: [Q13491](#)

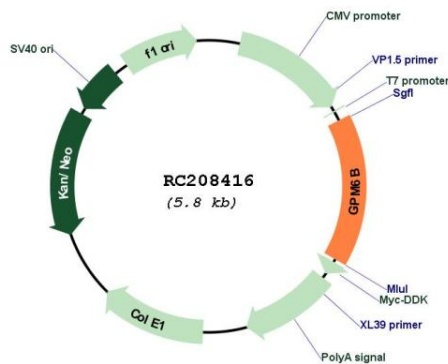
Cytogenetics: Xp22.2

Protein Families: Transmembrane

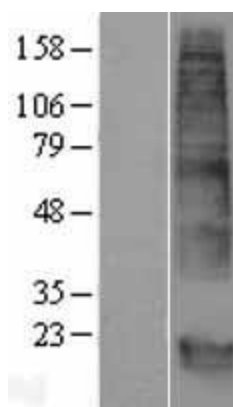
MW: 33.5 kDa

Gene Summary: This gene encodes a membrane glycoprotein that belongs to the proteolipid protein family. Proteolipid protein family members are expressed in most brain regions and are thought to be involved in cellular housekeeping functions such as membrane trafficking and cell-to-cell communication. This protein may also be involved in osteoblast differentiation. Alternate splicing results in multiple transcript variants. Pseudogenes of this gene are located on chromosomes Y and 22. [provided by RefSeq, Jan 2016]

Product images:



Circular map for RC208416



Western blot validation of overexpression lysate (Cat# [LY424311]) using anti-DDK antibody (Cat# [TA50011-100]). Left: Cell lysates from untransfected HEK293T cells; Right: Cell lysates from HEK293T cells transfected with RC208416 using transfection reagent MegaTran 2.0 (Cat# [TT210002]).