

Product datasheet for **RC208404**

SREBP1 (SREBF1) (NM_004176) Human Tagged ORF Clone

Product data:

Product Type:	Expression Plasmids
Product Name:	SREBP1 (SREBF1) (NM_004176) Human Tagged ORF Clone
Tag:	Myc-DDK
Symbol:	SREBP1
Synonyms:	bHLHd1; HMD; IFAP2; SREBP1
Mammalian Cell Selection:	Neomycin
Vector:	pCMV6-Entry (PS100001)
E. coli Selection:	Kanamycin (25 ug/mL)
ORF Nucleotide Sequence:	>RC208404 representing NM_004176 Red=Cloning site Blue=ORF Green=Tags(s)

CTATAGGGCGGCCGGGAATTCGTCGACTGGATCCGGTACCGAGGAGATCTGCCGCCGCGATCGCCGGCGC
GCC

ATGGACGAGCCACCCTTCAGCGAGGCGGCTTTGGAGCAGGCGCTGGGCGAGCCGTGCGATCTGGACGCGG
CGCTGCTGACCGACATCGAAGACATGCTTCAGCTTATCAACAACCAAGACAGTGACTTCCCTGGCCTATT
TGACCCACCCTATGCTGGGAGTGGGGCAGGGGACAGACCCTGCCAGCCCCGATACCAGCTCCCCAGGC
AGCTTGCTCCACCTCCTGCCACATTGAGCTCCTCTCTTGAAGCCTTCTGAGCGGGCCGACGGCAGCGC
CCTCACCCCTGTCCCTCCCCAGCCTGCACCCACTCCATTGAAGATGTACCCGTCATGCCCGCTTTCTC
CCCTGGGCCTGGTATCAAGGAAGAGTCACTGCCACTGAGCATCCTGCAGACCCCCACCCACAGCCCTG
CCAGGGGCCCTCCTGCCACAGAGCTTCCAGCCCCAGCCCCACCCGAGTTCCAGCTCCACCCTGTGTTAG
GCTACCCAGCCCTCCGGGAGGCTTCTCTACAGGAAGCCCTCCCGGGAACACCCAGCAGCCGCTGCCTGG
CCTGCCACTGGCTTCCCCGCCAGGGTCCCGCCGCTCCTTGCACACCCAGGTCCAGAGTGTGGTCCCC
CAGCAGCTACTGACAGTCACAGCTGCCCCACGGCAGCCCTGTAACGACCACTGTGACCTCGCAGATCC
AGCAGTCCCCTGCTGCTGCAGCCCACTTCAAGGCAGACTCGTGTCTGACAGCCATGAAGAC
AGACGGAGCCACTGTGAAGGCGGCAGGTCTCAGTCCCCGGTCTCTGGCACCAGTGTGCAGACAGGGCCT
TTGCCACCCTGGTGAAGTGGCGGAACCATTTGGCAACAGTCCCAGTGGTGTGATGCGGAGAAGCTGC
CTATCAACCGGCTCGCAGCTGGCAGCAAGGCCCGGCCTTCCAGAGCCGTTGGAGAGAAGCGCACAGC
CCACAACGCCATTGAGAAGCGCTACCGCTCCTCCATCAATGACAAAATCATTGAGCTCAAGGATCTGGTG
GTGGGCACTGAGGCAAAGCTGAATAAATCTGCTGTCTTGCGAAGGCCATCGACTACATTCGCTTTCTGC
AACACAGCAACCAGAACTCAAGCAGGAGAACCTAAGTCTGCGCACTGCTGTCCACAAAAGCAAATCTCT
GAAGGATCTGGTGTGGCCTGTGGCAGTGGAGGGAACACAGAGTGTCTATGGAGGGCGTGAAGACTGAG
GTGGAGGACACTGACCCACCCCTCGGATGCTGGCTCACCTTTCCAGAGCAGCCCTTGTCCCTTG
GCAGAAGGGCAGTGGCAGCGGTGGCAGTGGCAGTACTCGGAGCCTGACAGCCAGTCTTTGAGGACAG
CAAGGCAAAGCCAGAGCAGCGGCGTCTCTGCACAGCCGGGCATGCTGGACCGCTCCCGCTGGCCCTG



[View online »](#)

TGCACGCTCGTCTTCTCTGCCTGTCCTGCAACCCCTTGGCCTCCTTGCTGGGGGCCCGGGGCTTCCCA
 GCCCTCAGATACCACCAGCGTCTACCATAGCCCTGGGCGCAACGTGCTGGGCACCAGAGCAGAGATGG
 CCCTGGCTGGGCCAGTGGCTGCTGCCCCAGTGGTCTGGCTGCTCAATGGGCTGTTGGTCTCGTCTCC
 TTGGTGTCTCTTTGTCTACGGTGAGCCAGTACACGGCCCCACTCAGGCCCGCCGTGTACTTCTGGA
 GGCATCGCAAGCAGGCTGACCTGGACCTGGCCCCGGGAGACTTTGCCAGGCTGCCAGCAGCTGTGGT
 GGCCCTGCGGGCACTGGGCCGGCCCTGCCACCTCCCACCTGGACCTGGCTTGTAGCCTCTCTGGAAC
 CTCAATTCGTACCTGCTGCAGCTCTCTGGGTGGGCCGCTGGCTGGCAGGCCGGCAGGGGGCTGCAGC
 AGGACTGTGCTCTGCGAGTGGATGCTAGCGCCAGCGCCGAGACGCAGCCCTGGTCTACCATAAGCTGCA
 CCAGCTGCACACCATGGGAAGCACACAGGCGGGCACCTCACTGCCACCAACCTGGCGCTGAGTGCCTG
 AACCTGGCAGAGTGTGCAGGGGATGCCGTGTCTGTGGCGACGCTGGCCGAGATCTATGTGGCGGCTGCAT
 TGAGAGTGAAGACCAGTCTCCCACGGCCCTTGCAATTTTCTGACACGCTTCTTCTGAGCAGTGCCCCCA
 GGCCTGCCTGGCAGAGTGGCTCAGTGCCTCCTGCCATGCAGTGGCTTGCACCCCGTGGGCCACCGT
 TTCTTCGTGGATGGGACTGGTCCGTGCTCAGTACCCATGGGAGAGCCTGTACAGCTTGGCCGGGAACC
 CAGTGGACCCCTGGCCAGGTGACTCAGTATTCGGGAACATCTCTTAGAGCGAGCACTGAACTGTGT
 GACCCAGCCCAACCCAGCCCTGGGTGAGTGTGAGGGGCAAGGAATTTCGGATGCCCTCGGGTACCTG
 CAGCTGTGAACAGCTGTTCTGATGCTGCGGGGCTCCTGCCTACAGCTTCTCCATCAGTCCAGCATGG
 CCACCACCACCGCGTAGACCCGGTGGCAAGTGGTGGGCCTCTCTGACAGCTGTGGTGTCCACTGGCT
 GCGGCGGGATGAGGAGGCGGCTGAGCGGCTGTGCCGCTGGTGGAGCACCTGCCCGGGTGTGCAGGAG
 TCTGAGAGACCCCTGCCAGGGCAGCTCTGCACTCCTTCAAGGCTGCCCGGGCCCTGCTGGGCTGTGCCA
 AGGCAGAGTCTGGTCCAGCCAGCCTGACCATCTGTGAGAAGGCCAGTGGGTACCTGCAGGACAGCCTGGC
 TACCACACCAGCCAGCAGCTCCATTGACAAGGCCGTGCAGCTGTTCTGTGTGACCTGCTTCTTGTGGTG
 CGCACCAGCCTGTGGCGGCAGCAGCAGCCCCGGCCCCGGCCCCAGCAGCCAGGGCACCAGCAGCAGGC
 CCCAGGTTCCGCCCTTGTAGCTGCGTGGCTTCCAACGGGACCTGAGCAGCCTGAGGCGGCTGGCACAGAG
 CTTCCGGCCCGCCATGCGGAGGGTGTCTTACATGAGGCCACGGCCCGGCTGATGGCGGGGCCAGCCCC
 ACACGGACACACCAGCTCCTCGACCGCAGTCTGAGGCGGCGGGCAGGCCCGGTGGCAAAGGAGGCGCGG
 TGGCGGAGCTGGAGCCGCGGCCACGCGGCGGGAGCACGCGGAGGCTTGTGCTGGCCTCCTGCTACCT
 GCCCCCCGGTTCCTGTGCGGCGCCGGGCAGCGCTGGGCATGCTGGCTGAGGCGGCGCGCACACTCGAG
 AAGCTTGGCGATCGCCGGCTGCTGCACGACTGTCAGCAGATGCTCATGCGCTGGGCGGTGGGACCACTG
 TCACTTCCAGC

ACGCGTACGCGGCGGCTCGAGCAGAACTCATCTCAGAAGAGGATCTGGCAGCAAATGATATCCTGGATT
 ACAAGGATGACGACGATAAGGTTTAA

Protein Sequence: >RC208404 representing NM_004176
Red=Cloning site Green=Tags(s)

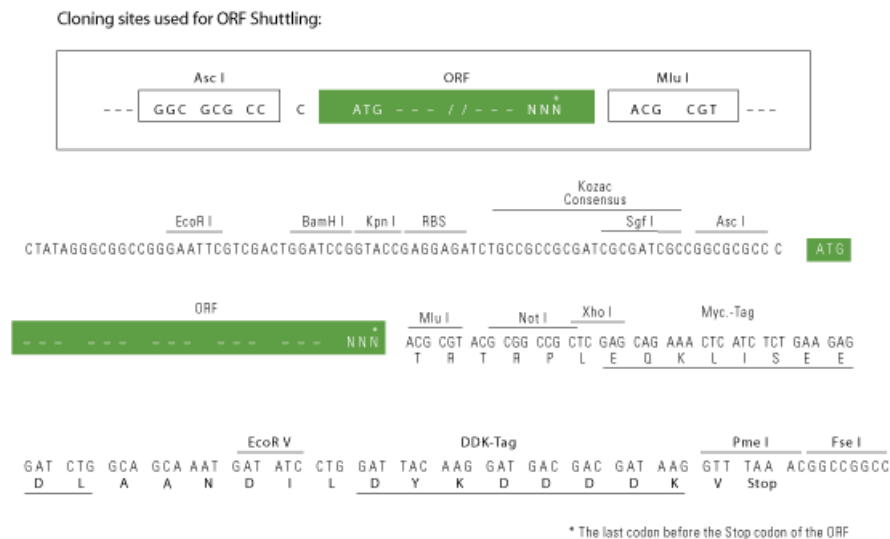
MDEPPFSEAALEQALGEPCLDAALLTDIEDMLQLINNQSDFFPGLFDPYAGSGAGGTDPAASPTSSPG
 SLSPPPATLSSSLEAFLSGPQAAPSPLSPPQAPPTPLKMYPSMPAFSPGPGIKEESVPLSILQTPTPQPL
 PGALLPQSFAPAPPQFSSTPVLGYSPPGGFSTGSPPGNTQQPLPGLPLASPPGVPVSLHTQVQSVVP
 QQLLTVTAAPTAAPVTTTTSQIQQVPLLQPHFIKADSLLLTAMKTDGATVKAAGLSPLVSGTTVQTGP
 LPTLVSGGTILATVPLVVDKELPINRLAAGSKAPASQSRGEKRTAHNAIEKRYRSSINDKIIELKDLV
 VGTEAKLNKSAVLRKAIDYIRFLQHSNQKQENLSLRTAVHKSLSKDLVSACGSGGNTDVLMEGVKTE
 VEDTLTPPPSDAGSPFQSSPLSLGRRGSGSGSGSDSEPDSPVFEDSKAKPEQRPSLHSGMLDRSRLAL
 CTLVFLCLSCNPLASLLGARGLPSPTTSSVYHSPGRNVLGTESRDGPGWAQWLLPPVWLLNGLLVLS
 LVLLFVYGEVTRPHSGPAVYFWRHRKQADLDLARGDFAQAAQQLWALRALGRPLPTSHLDLACSLWN
 LIRHLLQRLVWGRWLAGRAGGLQQDCALRVDASASARDAALVYHKLHQLHTMGKHTGGHLTATNLAL
 SALNLAECAGDAVSATLAEIYVAAALRVKTSRPRALHFLTRFFLSSARQACLAQSGSVPPAMQWLCHPVGHR
 FFVDGDWSVLSTPWESL YSLAGNPVDPLAQVTQLFREHLLERALNCVTQPNPSPGSADGDKFSDALGYL
 QLLNNSCSDAAGAPAYSFSISSMATTTGVDPVAKWWASLTAVVIHWLRRDEEAAERLCPLVEHLPRVLQE
 SERPLPRAALHSFKAARALLGCAKAESGPASLTICEKASGYLQDSLATTASSSIDKAVQLFLCDLLLVV
 RTSLSWRQQPPAPAPAAQGTSSRPQASALELRFQRLDSSLRRLAQSRFPAMRRVFLHEATARLMAGASP
 TRTHQLDRSLRRRAGPGGKGGAVAELEPRPTRREHAEALLASCYLPPGFLSAPGQRVGMLAEAAARTLE
 KLGDRLLHDCQQLMRLGGGTTVTSS

TRTRPLEQKLISEEDLAANDILDYKDDDDKV

Chromatograms: https://cdn.origene.com/chromatograms/mg2803_b01.zip

Restriction Sites: AscI-MluI

Cloning Scheme:



ACCN: NM_004176

ORF Size: 3441 bp

OTI Disclaimer: Due to the inherent nature of this plasmid, standard methods to replicate additional amounts of DNA in E. coli are highly likely to result in mutations and/or rearrangements. Therefore, OriGene does not guarantee the capability to replicate this plasmid DNA. Additional amounts of DNA can be purchased from OriGene with batch-specific, full-sequence verification at a reduced cost. Please contact our customer care team at custsupport@origene.com or by calling 301.340.3188 option 3 for pricing and delivery.

The molecular sequence of this clone aligns with the gene accession number as a point of reference only. However, individual transcript sequences of the same gene can differ through naturally occurring variations (e.g. polymorphisms), each with its own valid existence. This clone is substantially in agreement with the reference, but a complete review of all prevailing variants is recommended prior to use. [More info](#)

OTI Annotation: This clone was engineered to express the complete ORF with an expression tag. Expression varies depending on the nature of the gene.

Components: The ORF clone is ion-exchange column purified and shipped in a 2D barcoded Matrix tube containing 10ug of transfection-ready, dried plasmid DNA (reconstitute with 100 ul of water).

Reconstitution Method:

1. Centrifuge at 5,000xg for 5min.
2. Carefully open the tube and add 100ul of sterile water to dissolve the DNA.
3. Close the tube and incubate for 10 minutes at room temperature.
4. Briefly vortex the tube and then do a quick spin (less than 5000xg) to concentrate the liquid at the bottom.
5. Store the suspended plasmid at -20°C. The DNA is stable for at least one year from date of shipping when stored at -20°C.

RefSeq: [NM_004176.4](#)

RefSeq Size: 4922 bp

RefSeq ORF: 3444 bp

Locus ID: 6720

UniProt ID: [P36956](#)

Cytogenetics: 17p11.2

Domains: HLH

Protein Families: Druggable Genome, Transcription Factors

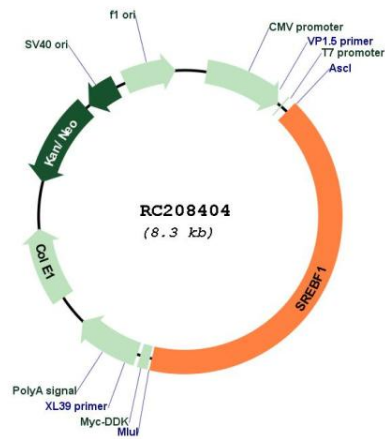
Protein Pathways: Insulin signaling pathway

MW: 122.2 kDa

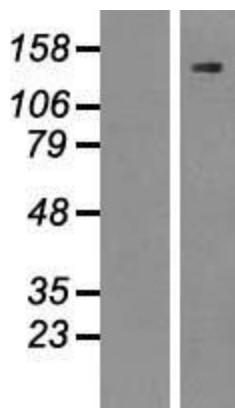
Gene Summary:

This gene encodes a basic helix-loop-helix-leucine zipper (bHLH-Zip) transcription factor that binds to the sterol regulatory element-1 (SRE1), which is a motif that is found in the promoter of the low density lipoprotein receptor gene and other genes involved in sterol biosynthesis. The encoded protein is synthesized as a precursor that is initially attached to the nuclear membrane and endoplasmic reticulum. Following cleavage, the mature protein translocates to the nucleus and activates transcription. This cleavage is inhibited by sterols. This gene is located within the Smith-Magenis syndrome region on chromosome 17. Alternative promoter usage and splicing result in multiple transcript variants, including SREBP-1a and SREBP-1c, which correspond to RefSeq transcript variants 2 and 3, respectively. [provided by RefSeq, Nov 2017]

Product images:



Circular map for RC208404



Western blot validation of overexpression lysate (Cat# [LY418165]) using anti-DDK antibody (Cat# [TA50011-100]). Left: Cell lysates from untransfected HEK293T cells; Right: Cell lysates from HEK293T cells transfected with RC208404 using transfection reagent MegaTran 2.0 (Cat# [TT210002]).