

## Product datasheet for **RC208381**

### LXR beta (NR1H2) (NM\_007121) Human Tagged ORF Clone

#### Product data:

Product Type:	Expression Plasmids
Product Name:	LXR beta (NR1H2) (NM_007121) Human Tagged ORF Clone
Tag:	Myc-DDK
Symbol:	LXR beta
Synonyms:	LXR-b; LXRB; NER; NER-I; RIP15; UNR
Mammalian Cell Selection:	Neomycin
Vector:	pCMV6-Entry (PS100001)
E. coli Selection:	Kanamycin (25 ug/mL)



[View online »](#)

**ORF Nucleotide Sequence:**

>RC208381 ORF sequence  
 Red=Cloning site Blue=ORF Green=Tags(s)

TTTTGTAATACGACTCACTATAGGGCGGCCGGGAATTCGTCGACTGGATCCGGTACCGAGGAGATCTGCC  
 GCC**GCGATCGCC**

ATGTCCTCTCCTACCACGAGTTCCTGGATACCCCTGCCTGGAAATGGCCCCCTCAGCTGGCGCCC  
 CTCTCTTACCCTACTGTAAGGAGGAGGGTCCGGAGCCGTGGCCGGGGTCCGGACCTGATGTCCC  
 AGGCACTGATGAGGCCAGCTCAGCTGCAGCACAGACTGGGTCATCCAGATCCCGAAGAGGAACAGAG  
 CGCAAGCGAAAGAAGGGCCAGCCCGAAGATGCTGGGCCACGAGCTTTCGCGTGTCTGTGGGGACAAGG  
 CCTCCGGCTTCCACTACAACGTGCTCAGCTGCGAAGGCTGCAAGGGCTTCTTCGCGCAGTGTGGTCCG  
 TGGTGGGGCCAGGCGCTATGCCTGCCGGGGTGGCGAACCTGCCAGATGGACGCTTTCATGCGGCGCAAG  
 TGCCAGCAGTCCCGCTGCGCAAGTGAAGGAGGCAGGGATGAGGGAGCAGTGCCTCTTCTGAAGAAC  
 AGATCCGGAAGAAGAAGATTCGAAACAACAGCAGCAGGAGTACAGTCACAGTCGCAGTCACTGTGGG  
 GCCGACAGGCAGCAGCTCAGCTCTGGGCTGGGGCTTCCCCTGGTGGATCTGAGGCAGGCAGCCAG  
 GGCTCCGGGAAGGCGAGGGTGTCCAGTAACAGCGGCTCAAGAACTAATGATCCAGCAGTTGGTGGCGG  
 CCCAAGTGCAGTCAACAACGCTCCTTCTCCGACCAGCCAAAGTACGCCCTGGCCCCCTGGGCGCAGA  
 CCCCCAGTCCCGAGATGCCCGCCAGCAACGCTTTCGCCACTTACGGAGCTGGCCATCATCTCAGTCCAG  
 GAGATCGTGGACTTCGCTAAGCAAGTGCCTGGTTTCTGCAGCTGGGCCGGGAGGACCAGATCGCCCTCC  
 TGAAGGCATCCACTATCGAGATCATGCTGCTAGAGACAGCCAGGCGCTACAACCACGAGACAGAGTGTAT  
 CACCTTCTGAAGGACTTCACTACAGCAAGGACGACTTCCACCGTGCAGGCTGCAGGTGGAGTTATC  
 AACCCATCTTCGAGTTCTCGCGGGCCATGCGGGGCTGGGCTGGACGACGCTGAGTACGCCCTGCTCA  
 TCGCCATCAACATCTTCTCGCGGACCGGCCAACGTCAGGAGCCGGCCGCGTGGAGGCGTTGACGCA  
 GCCCTACGTGGAGGCGCTGCTGTCTACACGCGCATCAAGAGGCCGAGGACCAGCTGCGCTTCCGCGC  
 ATGCTCATGAAGCTGGTGAAGCTGCGCACGCTGAGCTCTGTGCACTCGGAGCAGGCTTTCGCTTCCGCG  
 TCCAGGACAAGAAGCTGCCGCTCTGCTGTCGAGATCTGGGACGTCCAGAG

**ACGCGT**ACGCGGCCGCTCGAGCAGAACTCATCTCAGAAGAGGATCTGGCAGCAAATGATATCCTGGATT  
 ACAAGGATGACGACGATAAGGTTTAA

**Protein Sequence:**

>RC208381 protein sequence  
 Red=Cloning site Green=Tags(s)

MSSPTTSSLDTPLPGNGPPQPGAPSSSPTVKEEGPEPWPGPDPDVPDPTDEASSACSTDWVIPDPEEPE  
 RKRKKGPAKMLGHELCRVCGDKASGFHYNVLSCEGCKGFFRRSVVRGGARRYACRGGGTCQMDAFMRRK  
 CQQCRLRKCKEAGMREQVLSSEQIRKKKIRKQQQESQSQSPVGPQGSSSASGPGASPGGSEAGSQ  
 GSSEGEVQLTAAQELMIQQLVAAQLQCNKRSFSDQPKVTPWPLGADPQSRDARQRF AHFTELAIISVQ  
 EIVDFAKQVPGFLQLGREDQIALLKASTIEIMLLETARRYNHETECITFLKDFTYSKDDFHRAGLQVEFI  
 NPIFEFSRAMRRLGLDDAEYALLIAINIFSAADPNVQEPGRVEALQQPYVEALLSYTRIKRPQDQLRFRP  
 MLMKLVSLRRTLSSVHSEQVFALRLQDKKLPLLSIWDVHE

**TR**TRPLEQKLISEEDLAANDILDYKDDDDKV

**Chromatograms:**

[https://cdn.origene.com/chromatograms/mk6090\\_h12.zip](https://cdn.origene.com/chromatograms/mk6090_h12.zip)

**Restriction Sites:**

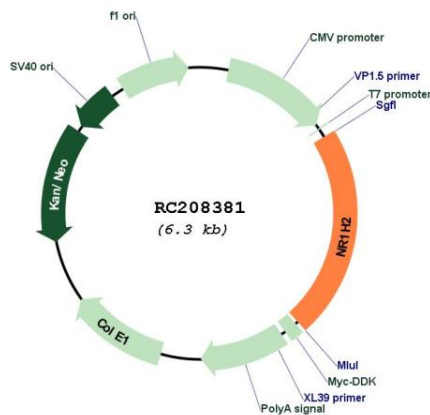
Sgfl-Mlul



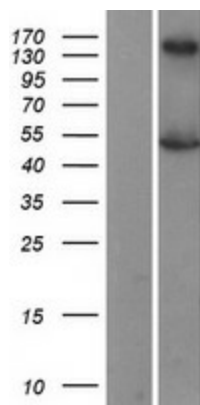
**RefSeq:** [NM\\_007121.5](#)  
**RefSeq Size:** 2093 bp  
**RefSeq ORF:** 1383 bp  
**Locus ID:** 7376  
**UniProt ID:** [P55055](#)  
**Cytogenetics:** 19q13.33  
**Domains:** HOLI, zf-C4  
**Protein Families:** Druggable Genome, Nuclear Hormone Receptor, Transcription Factors  
**MW:** 51.1 kDa

**Gene Summary:** The liver X receptors, LXRA (NR1H3; MIM 602423) and LXRβ, form a subfamily of the nuclear receptor superfamily and are key regulators of macrophage function, controlling transcriptional programs involved in lipid homeostasis and inflammation. The inducible LXRA is highly expressed in liver, adrenal gland, intestine, adipose tissue, macrophages, lung, and kidney, whereas LXRβ is ubiquitously expressed. Ligand-activated LXRs form obligate heterodimers with retinoid X receptors (RXRs; see MIM 180245) and regulate expression of target genes containing LXR response elements (summary by Korf et al., 2009 [PubMed 19436111]).[supplied by OMIM, Jan 2010]

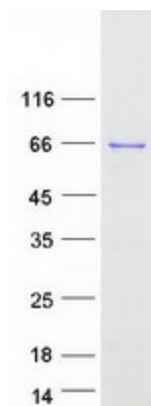
### Product images:



Circular map for RC208381



Western blot validation of overexpression lysate (Cat# [LY402093]) using anti-DDK antibody (Cat# [TA50011-100]). Left: Cell lysates from un-transfected HEK293T cells; Right: Cell lysates from HEK293T cells transfected with RC208381 using transfection reagent MegaTran 2.0 (Cat# [TT210002]).



Coomassie blue staining of purified NR1H2 protein (Cat# [TP308381]). The protein was produced from HEK293T cells transfected with NR1H2 cDNA clone (Cat# RC208381) using MegaTran 2.0 (Cat# [TT210002]).