

Product datasheet for **RC208255**

KCNIP1 (NM_014592) Human Tagged ORF Clone

Product data:

Product Type:	Expression Plasmids
Product Name:	KCNIP1 (NM_014592) Human Tagged ORF Clone
Tag:	Myc-DDK
Symbol:	KCNIP1
Synonyms:	KCHIP1; VABP
Mammalian Cell Selection:	Neomycin
Vector:	pCMV6-Entry (PS100001)
E. coli Selection:	Kanamycin (25 ug/mL)
ORF Nucleotide Sequence:	>RC208255 ORF sequence Red=Cloning site Blue=ORF Green=Tags(s)

TTTTGTAATACGACTCACTATAGGGCGCCGGGAATTCGTCGACTGGATCCGGTACCGAGGAGATCTGCC
GCC**CGATCGCC**

ATGGGGCCGTCATGGGCACCTTCTCATCTCTGCAAACCAACAAAGGCGACCCTCGAAAGATAAGATTG
AAGATGAGCTGGAGATGACCATGGTTTGCATCGGCCGAGGGACTGGAGCAGCTCGAGGCCAGACCAA
CTTCACCAAGAGGGAGCTGCAGGTCCTTATCGAGGCTTCAAAAATGAGTGCCCCAGTGGTGTGGTCAAC
GAAGACACATTCAAGCAGATCTATGCTCAGTTTTTCCCTCATGGAGATGCCAGCACGTATGCCATTACC
TCTTCAATGCCTTCGACACCACTCAGACAGGCTCCGTGAAGTTCGAGGACTTTGTAACCGCTCTGTCGAT
TTTATTGAGAGGAAGTGTCCACGAGAACTAAGGTGGACATTTAATTTGTATGACATCAACAAGGACGGA
TACATAAACAAAGAGGAGATGATGGACATTGTCAAAGCCATCTATGACATGATGGGGAAATACACATATC
CTGTGCTCAAAGAGGACTCCAAGGCAGCATGTGGACGTCTTCTTCCAGAAAATGGACAAAAATAAGA
TGGCATCGTAACCTTAGATGAATTTCTTGAATCATGTCAGGAGGACGACAACATCATGAGGTCTCTCCAG
CTGTTTCAAATGTCATG

ACGCGTACGCGGCCGCTCGAGCAGAACTCATCTCAGAAGAGGATCTGGCAGCAATGATATCCTGGATT
ACAAGGATGACGACGATAAGGTTTAA



[View online »](#)

Protein Sequence: >RC208255 protein sequence
Red=Cloning site Green=Tags(s)

MGAVMGTFFSSLQTKQRRPSKDKIEDELEMTMVCHRPEGLEQLEAQTNFTKRELQVLYRGFKNECPSGVVN
 EDTFKQIYAQFFPHGDASTYAHYLFNAFDTTQTGSVKFEDFVTALSILLRGTVHEKLRWTFNLYDINKDG
 YINKEEMMDIVKAIYDMMGKYTPVLKEDTPRQHVDFVFQKMDKNKDGIVTLDEFLESCQEDDNIMRSLQ
 LFQNVN

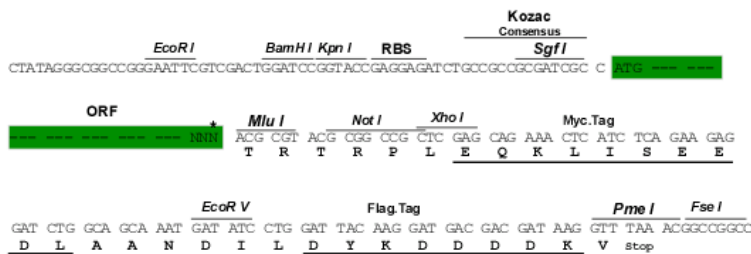
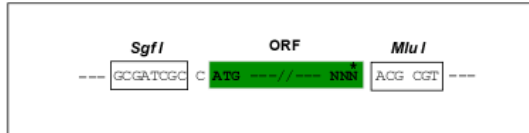
TRTRPLEQKLISEEDLAANDILDYKDDDDKV

Chromatograms: https://cdn.origene.com/chromatograms/mk6350_h12.zip

Restriction Sites: SgfI-MluI

Cloning Scheme:

Cloning sites used for ORF Shuttling:



* The last codon before the Stop codon of the ORF

ACCN: NM_014592

ORF Size: 648 bp

OTI Disclaimer: The molecular sequence of this clone aligns with the gene accession number as a point of reference only. However, individual transcript sequences of the same gene can differ through naturally occurring variations (e.g. polymorphisms), each with its own valid existence. This clone is substantially in agreement with the reference, but a complete review of all prevailing variants is recommended prior to use. [More info](#)

OTI Annotation: This clone was engineered to express the complete ORF with an expression tag. Expression varies depending on the nature of the gene.

Components: The ORF clone is ion-exchange column purified and shipped in a 2D barcoded Matrix tube containing 10ug of transfection-ready, dried plasmid DNA (reconstitute with 100 ul of water).

Reconstitution Method:

1. Centrifuge at 5,000xg for 5min.
2. Carefully open the tube and add 100ul of sterile water to dissolve the DNA.
3. Close the tube and incubate for 10 minutes at room temperature.
4. Briefly vortex the tube and then do a quick spin (less than 5000xg) to concentrate the liquid at the bottom.
5. Store the suspended plasmid at -20°C. The DNA is stable for at least one year from date of shipping when stored at -20°C.

RefSeq: [NM_014592.4](#)

RefSeq Size: 2028 bp

RefSeq ORF: 651 bp

Locus ID: 30820

UniProt ID: [Q9NZI2](#)

Cytogenetics: 5q35.1

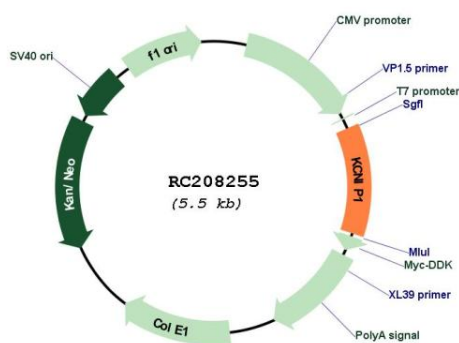
Domains: EFh

Protein Families: Druggable Genome, Ion Channels: Other

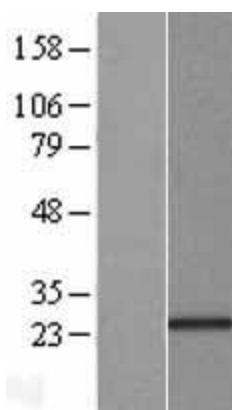
MW: 25.2 kDa

Gene Summary: This gene encodes a member of the family of cytosolic voltage-gated potassium (Kv) channel-interacting proteins (KCNIPs), which belong to the neuronal calcium sensor (NCS) family of the calcium binding EF-hand proteins. They associate with Kv4 alpha subunits to form native Kv4 channel complexes. The encoded protein may regulate rapidly inactivating (A-type) currents, and hence neuronal membrane excitability, in response to changes in the concentration of intracellular calcium. Alternative splicing results in multiple transcript variants encoding different isoforms. [provided by RefSeq, May 2013]

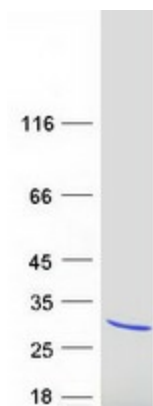
Product images:



Circular map for RC208255



Western blot validation of overexpression lysate (Cat# [LY415191]) using anti-DDK antibody (Cat# [TA50011-100]). Left: Cell lysates from untransfected HEK293T cells; Right: Cell lysates from HEK293T cells transfected with RC208255 using transfection reagent MegaTran 2.0 (Cat# [TT210002]).



Coomassie blue staining of purified KCNIP1 protein (Cat# [TP308255]). The protein was produced from HEK293T cells transfected with KCNIP1 cDNA clone (Cat# RC208255) using MegaTran 2.0 (Cat# [TT210002]).